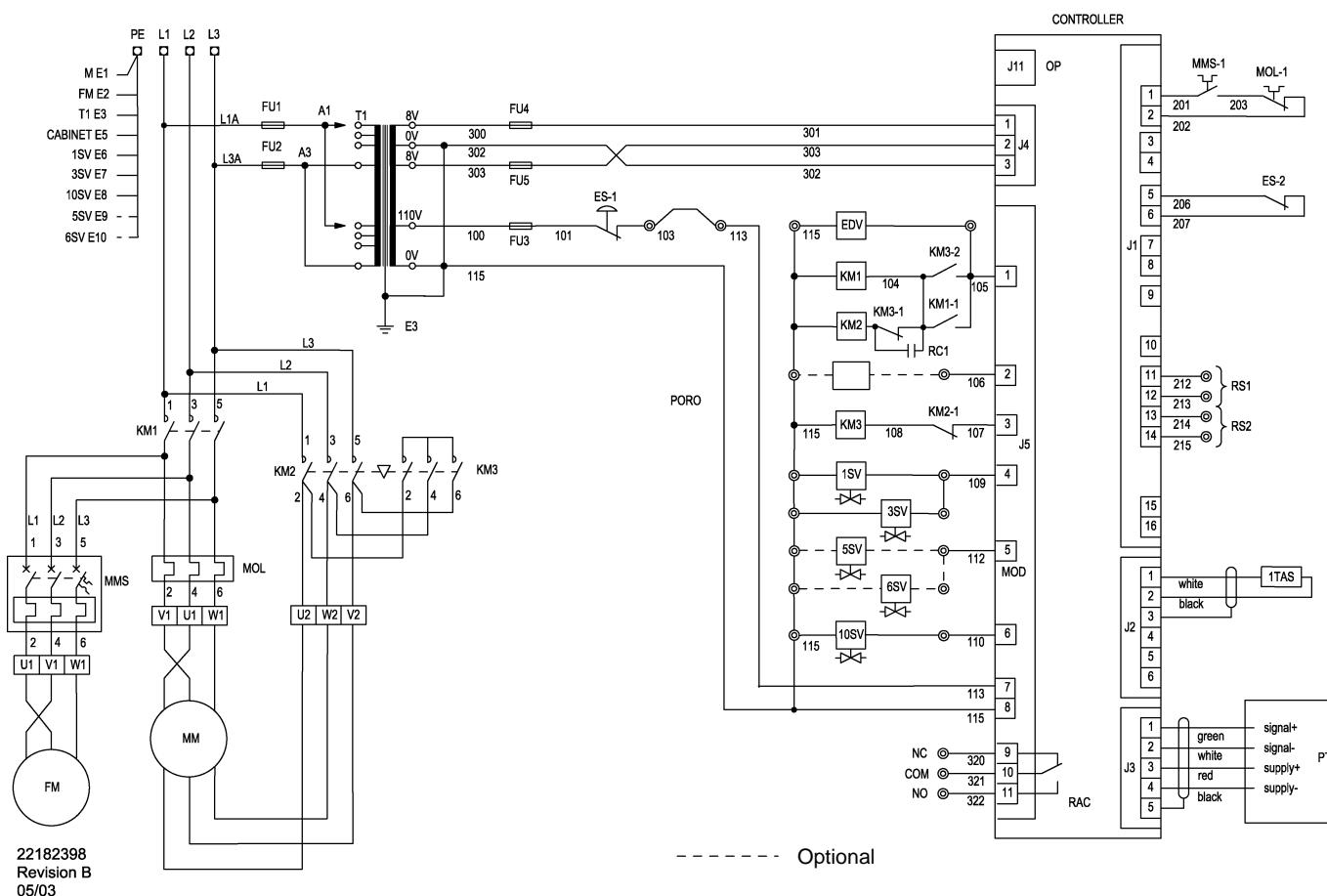


STAR – DELTA WIRING SCHEMATIC



LEGEND

EDV	Valve, electric drain	T1	Transformer
1TAS	Transducer, air temperature	ES	Switch, emergency stop
PT	Transducer, pressure	FU1, FU2	Fuses, primary voltage
MOD	Option, modulation control	FU3	Fuse, secondary voltage
MM	Motor, compressor	FU4, FU5	Fuses, low voltage
FM	Motor, fan	KM1	Contactor, main
OP	Plug, option	KM1-1	Contact, aux. main contactor
PORO	Horn, power outage (option)	KM2	Contactor, delta
RAC	Contacts, remote alarm (option)	KM2-1	Contact, aux. delta contactor
RS1	Switch, remote start (option)	MMS	Starter & overload, fan motor
RS2	Switch, remote stop (option)	MMS-1	Contact, fan motor overload
1SV	Valve, solenoid (load) N.C.	MOL	Overload, motor
3SV	Valve, solenoid (boltdown) N.O.	MOL-1	Contact, main motor overload
5SV	Valve, solenoid (modulation option)	RC1	Supressor
6SV	Valve, solenoid (modulation option)	KM3	Contactor, star
10SV	Valve, solenoid (line/sump)	KM3-1,2	Contacts, aux. star contactor