

Strategic Spare Parts List (Recommended Spare Parts List)

EQ/SYS.		USE		
Condensate Extraction Pump		-		
No.	Description	OUTLINE	QUANTITY	REMARKS (Purpose)
TJB5-SS-MECH -CEP-001	Impeller Ring; MACH 275.000 MM; 290.000 MM; 37.000MM	Part No.503.132 (See. attached drawing)	Refer to TJB56-L1-OFF-C -00-G-LST-0021	-
TJB5-SS-MECH -CEP-002	IMPELLER RING;MACH 280.000 MM;295.000 MM;43.000 MM	Part No. 503.162 (See. attached drawing)	Refer to TJB56-L1-OFF-C -00-G-LST-0021	-
TJB5-SS-MECH -CEP-003	STATIONARY RING;MACH 290.580 MM;305.500 MM;37.000 MM	Part No. 502.113 (See. attached drawing)	Refer to TJB56-L1-OFF-C -00-G-LST-0021	-
TJB5-SS-MECH -CEP-004	STATIONARY RING;MACH 290.580 MM;305.500 MM;37.000 MM	Part No.502.114 (See. attached drawing)	Refer to TJB56-L1-OFF-C -00-G-LST-0021	-
TJB5-SS-MECH -CEP-005	STATIONARY RING;MACH 295.550 MM;314.000 MM;43.000 MM	Part No. 502.152 (See. attached drawing)	Refer to TJB56-L1-OFF-C -00-G-LST-0021	-
TJB5-SS-MECH -CEP-006	BEARING BUSHING; MACHINED; SJDCEP;BD425	Part No. 545.115 (See. attached drawing)	Refer to TJB56-L1-OFF-C -00-G-LST-0021	-

Strategic Spare Parts List (Recommended Spare Parts List)

EQ/SYS.		USE		
Condensate Extraction Pump		-		
No.	Description	OUTLINE	QUANTITY	REMARKS (Purpose)
TJB5-SS-MECH -CEP-007	BEARING BUSHING; SJD;BD425	Part No.545.120 (See. attached drawing)	Refer to TJB56-L1-OFF-C -00-G-LST-0021	-
TJB5-SS-MECH -CEP-008	BEARING BUSHING; MACH;SJDCEP; 24DHC	Part No.545.185 (See. attached drawing)	Refer to TJB56-L1-OFF-C -00-G-LST-0021	-
TJB5-SS-MECH -CEP-009	BEARING BUSHING;SJD; 24DHC BD425	Part No.545.212 (See. attached drawing)	Refer to TJB56-L1-OFF-C -00-G-LST-0021	-
TJB5-SS-MECH -CEP-010	BEARING BUSHING;SJD; 24DHC BD425	Part No.545.154 (See. attached drawing)	Refer to TJB56-L1-OFF-C -00-G-LST-0021	-
TJB5-SS-MECH -CEP-011	BEARING BUSHING;SJD; 24DHC BD425	Part No.545.164 (See. attached drawing)	Refer to TJB56-L1-OFF-C -00-G-LST-0021	-
TJB5-SS-MECH -CEP-012	SHAFT SLEEVE;MACH; SJD	Part No.520.447 (See. attached drawing)	Refer to TJB56-L1-OFF-C -00-G-LST-0021	-

EQ/SYS.		USE		
Condensate Extraction Pump		-		
No.	Description	OUTLINE	QUANTITY	REMARKS (Purpose)
TJB5-SS-MECH -CEP-013	O-RING;430.660 MM;3.550 MM;ISO 3601-1	Part No.412.119 (See. attached drawing)	Refer to TJB56-L1-OFF-C -00-G-LST-0021	-
TJB5-SS-MECH -CEP-014	O-RING;506.810 MM;5.330 MM;ISO 3601-1	Part No.412.193 (See. attached drawing)	Refer to TJB56-L1-OFF-C -00-G-LST-0021	-
TJB5-SS-MECH -CEP-015	O-RING;460.000 MM;3.550 MM;ISO 3601-1	Part No.412.192 (See. attached drawing)	Refer to TJB56-L1-OFF-C -00-G-LST-0021	-
TJB5-SS-MECH -CEP-016	O-RING;506.810 MM;5.330 MM;ISO 3601-1	Part No.412.195 (See. attached drawing)	Refer to TJB56-L1-OFF-C -00-G-LST-0021	-
TJB5-SS-MECH -CEP-017	O-RING;320.000 MM;3.550 MM;ISO 3601-1	Part No.412.213 (See. attached drawing)	Refer to TJB56-L1-OFF-C -00-G-LST-0021	-
TJB5-SS-MECH -CEP-018	O-RING;160.000 MM;3.550 MM;ISO 3601-1	Part No.412.445 (See. attached drawing)	Refer to TJB56-L1-OFF-C -00-G-LST-0021	-

Strategic Spare Parts List (Recommended Spare Parts List)

EQ/SYS.		USE		
Condensate Extraction Pump		-		
No.	Description	OUTLINE	QUANTITY	REMARKS (Purpose)
TJB5-SS-MECH -CEP-019	O-RING;145.000 MM;3.550 MM;ISO 3601-1	Part No.412.450 (See. attached drawing)	Refer to TJB56-L1-OFF-C -00-G-LST-0021	-
TJB5-SS-MECH -CEP-020	O-RING;67.000 MM;3.550 MM;ISO 3601-1	Part No.412.451 (See. attached drawing)	Refer to TJB56-L1-OFF-C -00-G-LST-0021	-
TJB5-SS-MECH -CEP-021	O-RING;475.000 MM;5.000 MM;ISO 3601-1	Part No.412.331 (See. attached drawing)	Refer to TJB56-L1-OFF-C -00-G-LST-0021	-
TJB5-SS-MECH -CEP-022	O-RING;1149.000 MM;6.990 MM;ISO 3601-1	Part No.412.264 (See. attached drawing)	Refer to TJB56-L1-OFF-C -00-G-LST-0021	-
TJB5-SS-MECH -CEP-023	Spiral wound gaskets ASME B16.20;3/4";CL150#	Part No.400.018/400.004 (See. attached drawing)	Refer to TJB56-L1-OFF-C -00-G-LST-0021	-
TJB5-SS-MECH -CEP-024	GLAND PACKING	Part No.461.425 (See. attached drawing)	Refer to TJB56-L1-OFF-C -00-G-LST-0021	-

Strategic Spare Parts List (Recommended Spare Parts List)

EQ/SYS.		USE		
Condensate Extraction Pump		-		
No.	Description	OUTLINE	QUANTITY	REMARKS (Purpose)
TJB5-SS-MECH -CEP-025	Automatic Lubricator-N. DE	-	Refer to TJB56-L1-OFF-C -00-G-LST-0021	-
TJB5-SS-MECH -CEP-026	Automatic Lubricator-DE	-	Refer to TJB56-L1-OFF-C -00-G-LST-0021	-

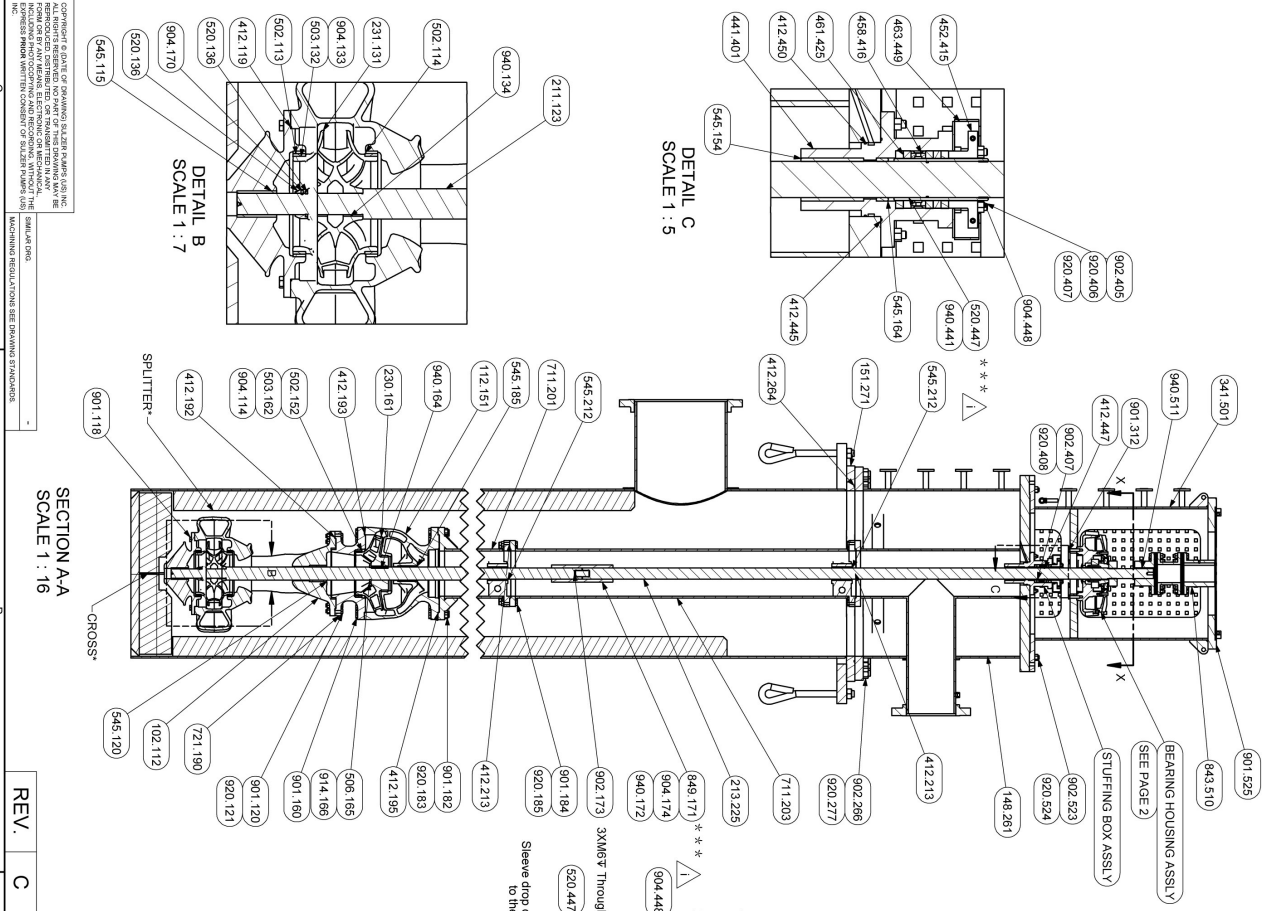
D

C

B

A

ITEM	DESCRIPTION	SIZE	MATERIAL	Comp Qty	Mass(Kg)
102.112	VOLUTE CASE	BD245	ASTM A216 GR WCB	1	500
112.151	BOWL	Z40HC	ASTM A216 GR WCB	1	320
112.261	DISCHARGE BELT	BD245	ASTM A216 GR WCB	1	1150
151.271	BARREL	ASTM A516 GR70	ASTM A516 GR70	1	3300
211.123	PUMP SHAFT	A276 TYPE 420	A276 TYPE 420	1	140
213.225	HEAD START IMPELLER Z40HC	ASTM A487 C68WVA	ASTM A487 C68WVA	1	80
230.161	IMPELLER DOUBLE MOTOR STAND	BD245 CCW	ASTM A516 GR70	1	820
331.131	MOTOR STAND	BD245 CCW	ASTM A516 GR70	1	820
412.119	O-RINGS VOL. CASE TO VOL. CASE	430.86 x 3.55	NBR / O-RING N. NIM60	1	
412.120	O-RINGS VOL. CASE TO ADAPTER	460 X 3.53	NBR / O-RING N. NIM60	1	
412.121	O-RINGS VOL. CASE TO BOWL	506.81 x 3.33	NBR / O-RING N. NIM60	1	
412.122	O-RINGS COLUMN TO BOWL	506.81 x 3.33	NBR / O-RING N. NIM60	1	
412.213	O-RING COLUMN	320X3.55	NBR / O-RING N. NIM60	1	
412.214	O-RING BARREL TO DIS. HEAD	1149X3.99	NBR / O-RING N. NIM60	1	
412.245	O-RING STUFFING BOX DIS. HEAD	180X3.55	NBR / O-RING N. NIM60	1	
412.420	O-RING STUFFING BOX DIS. HEAD	180X3.55	NBR / O-RING N. NIM60	1	
412.421	O-RING STUFFING BOX DIS. HEAD	180X3.55	NBR / O-RING N. NIM60	1	
441.401	STUFFING BOX	67X6.99	ASTM A108 GR 1045	1	
452.415	LAND		ASTM A108 GR 1045	1	
458.416	LAND		ASTM A108 GR 1045	1	
461.425	PACKING SEAL	JOHN CRANE #1340	JOHN CRANE #1340	1	
461.426	PACKING SEAL		A276 TYPE 420	1	
501.135	SPLIT RING		A276 TYPE 420	1	
502.113	STATIONARY RING-SUCTION BELL	ASTM A472 Type 420	ASTM A472 Type 420	1	
502.114	STATIONARY RING-VOLUTE CASE	ASTM A472 Type 420	ASTM A472 Type 420	1	
502.152	STATIONARY RING	ASTM A472 Type 420	ASTM A472 Type 420	1	
503.132	IMPELLER RING-SUC. IMPELLER	ASTM A182 GR F82M	ASTM A182 GR F82M	2	
503.182	IMPELLER RING	250 to 250.0H	ASTM A182 GR F82M	1	
506.165	COLLAR	ASTM A182 GR F82M	ASTM A182 GR F82M	1	
520.136	SELEVE	A276 TYPE 420	A276 TYPE 420	1	
520.447	SHAFT SELEVE	Type 416	Type 416	1	
545.115	BEARING-BUSHING-SUCTION BELL	Bushing Granphaloy GM	Bushing Granphaloy GM	1	
545.120	BEARING-BUSHING-VOL. CASE	Bushing Granphaloy GM	Bushing Granphaloy GM	1	
545.164	BEARING-BUSHING-SEAL HOUSING	Bushing Granphaloy GM	Bushing Granphaloy GM	1	
545.164	THROAT BUSHING-SEAL HOUSING	Bushing Granphaloy GM	Bushing Granphaloy GM	1	
545.165	BEARING-BUSHING-COLUMNS	Bushing Granphaloy GM	Bushing Granphaloy GM	2	
545.212	BEARING-BUSHING-COLUMNS	Bushing Granphaloy GM	Bushing Granphaloy GM	2	
711.201	COLUMN PIPE BOTTOM	A516 A516 GR70	A516 A516 GR70	1	
711.203	COLUMN PIPE TOP	ASTM A516 GR70	ASTM A516 GR70	1	
721.190	ADAPTER	ASTM A108 GR 1045	ASTM A108 GR 1045	1	
843.510	FLEXIBLE COUPLING	A278 TYPE 420	A278 TYPE 420	1	
849.171	SELEVE COUPLING	ISO898-1 8.8 Zn coated	ISO898-1 8.8 Zn coated	1	
901.118	CASE HEAD SCREW-SUC. BELL TO VOL. CASE	M20X45	M20X45	8	
901.120	HEX. HEAD SCREW-VOL. CASE TO ADAPTER	M20X100	ISO898-1 8.8 Zn coated	16	
901.160	HEX. HEAD SCREW-ADAPTER TO BOWL	M24X75	ISO898-1 8.8 Zn coated	24	
901.161	HEX. HEAD SCREW-BOTTOM COLUMN	M24X150	ISO898-1 8.8 Zn coated	20	
901.164	HEX. HEAD SCREW-COLUMN TO DIS. HEAD	M20X70	ISO898-1 8.8 Zn coated	20	
901.312	HEX. HEAD SCREW-BEAR HOUSE TO MOTOR STAND	M16X60	ISO898-1 8.8 Zn coated	6	
901.525	MOTOR STAND	M20X110	ISO898-1 8.8 Zn coated	4	
902.173	STUD	A276 TYPE 420	A276 TYPE 420	1	
902.266	STUD-DIS. HEAD TO BARREL	M24X150	ISO898-1 8.8 Zn coated	44	
902.450	STUD-GLAND TO STUFFING BOX	A193 GR B7-A2B	A193 GR B7-A2B	8	
902.453	STUD-DIS. HEAD TO MOTOR STAND	M16X70	ISO898-1 8.8 Zn coated	8	
904.114	SET SCREW-IMPELLER RING	M24X110	ISO898-1 8.8 Zn coated	3	
904.133	SET SCREW	M20X10	M20X10	6	
904.134	SET SCREW	M24X10	M24X10	3	
904.135	SET SCREW	M24X10	M24X10	3	
904.448	SET SCREW-SHAFT SLEEVE DIMGR6/1	M24X10	M24X10	3	
914.166	HEX. SOCK SCREW	M24X10	M24X10	3	
920.121	NUT-BOWL TO COLUMN	M20	M20	16	
920.183	NUT-BOWL TO COLUMN	M20	M20	16	
920.227	NUT-GLAND TO STUFFING BOX	M14	M14	44	
920.406	NUT-GLAND TO STUFFING BOX	M14	M14	44	
920.407	NUT-STUFFING BOX TO DISCHARGE	M14	M14	4	
920.408	HEX. FILL NUTS- DIS. HEAD TO MOTOR STAND	M16	A194 GR 7 A2B	8	
920.524	KEY-SUC. IMPELLER	M24	A276 TYPE 420	1	
940.134	KEY-SERIES IMPELLER	28X11X145	A276 TYPE 420	8	
940.172	KEY-SERIES IMPELLER	28X11X140	A276 TYPE 420	1	
940.511	KEY-COUPLING	20X12X20	A276 TYPE 420	1	



REV.	C	A
1	UPDATE AS PER COMMENTS	
2	UPDATE THE STANDARD PARTS AS PER FINAL DESIGN	
3	UPDATE O-RING SIZE	
4	UPDATE AS PER COMMENTS	
5	UPDATE AS PER COMMENTS	
6	UPDATE AS PER COMMENTS	
7	UPDATE AS PER COMMENTS	
8	UPDATE AS PER COMMENTS	
9	ADD THE THROAT BUSHING	
10	UPDATE AS PER COMMENTS	
11	FIRST ISSUE	

NO.	COMPONENT DESCRIPTION	CLEARANCE (mm)
1	1st Stage Wear Ring	0.48-0.57
2	2nd Stage Wear Ring	0.48-0.57