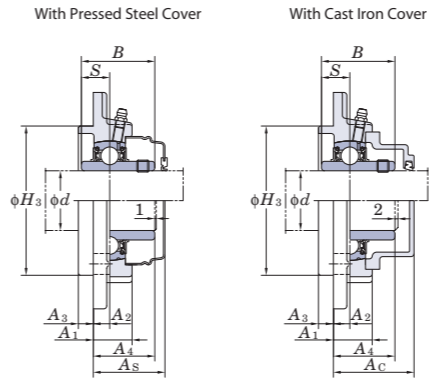
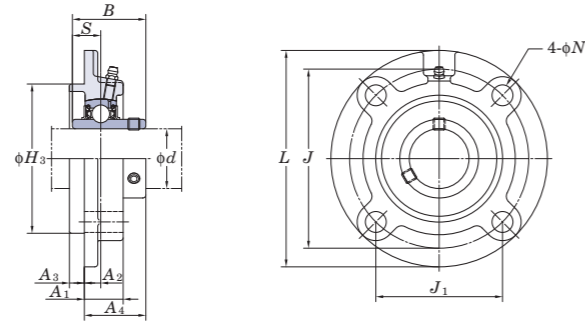


**UCFC**  
Cylindrical bore (with set screws)  
d 12 ~ 50 mm



Variations of tolerance of spigot joint outside diameter ( $\Delta H_{3s}$ ), variations of tolerance of distance from mounting surface to center of spherical bore ( $\Delta A_{2s}$ ), tolerance of position of bolt hole (X), and tolerance of circumferential runout of spigot joint (Y)

Housing No.	Unit No.	$\Delta H_{3s}$	$\Delta A_{2s}$	X	Y
FC204~FC206	FCX05	0 -0.046	±0.5	0.7	0.2
FC207~FC210	FCX06~FCX10	0 -0.054			
FC211~FC217	FCX11~FCX15	0 -0.063			0.3
FC218	FCX16~FCX18 FCX20	0 -0.072	±0.8	1	0.4

Variations of tolerance of bolt hole diameter ( $\Delta H_{1s}$ )

Housing No.	Unit No.	$\Delta H_{1s}$
FC204~FC218   FCX05~FCX20		±0.2

Shaft Dia. mm inch	Dimensions inch mm											Bolt Size inch mm	Standard			Basic		Factor	With Pressed Steel Cover				With Cast Iron Cover											
	L	H <sub>3</sub>	J	J <sub>1</sub>	N	A <sub>1</sub>	A <sub>2</sub>	A <sub>3</sub>	A <sub>4</sub>	B	S		Unit No.	Housing No.	Bearing No.	Mass kg	C <sub>r</sub>		C <sub>0r</sub>	Unit No. Open Type Closed Type	Dimension mm inch A <sub>s</sub>	Mass kg	Unit No. Open Type Closed Type	Dimension mm inch A <sub>e</sub>	Mass kg									
12 1/2	3 15/16	2.4409	3 5/8	2 11/64	15/32	13/16	25/64	13/64	1 1/8	1.220	0.500	3/8	FC204	UC201 UC201-8 UC202 UC202-10 UC203 UC204-12 UC204	0.78 0.78 0.76 0.76 0.75 0.75 0.73	12.8	6.65	13.2	UCFC201C	UCFC201D	32.5	1 9/32	0.78	—	—	—	—	—	—	—	—	—		
																			UCFC202C	UCFC202D	32.5	1 9/32	0.76	—	—	—	—	—	—	—	—	—	—	—
15 5/8	100	62	78	55.1	12	20.5	10	5	28.3	31	12.7	M10	FC204	UC202-10 UC203 UC204-12 UC204	0.76 0.75 0.75 0.73	12.8	6.65	13.2	UCFC203C	UCFC203D	32.5	1 9/32	0.75	—	—	—	—	—	—	—	—	—	—	—
																			UCFC204C	UCFC204D	32.5	1 9/32	0.73	UCFC204FC	UCFC204FD	41	1 17/32	0.84	—	—	—	—	—	—
17 3/4	4 17/32	2.7559	3 35/64	2 1/2	15/32	13/16	25/64	15/64	1 3/16	1.343	0.563	3/8	FC205	UC205-14 UC205-15 UC205 UC205-16	0.95 0.95 0.95 0.95	14.0	7.85	13.9	UCFC205C	UCFC205D	34.5	1 11/32	0.95	UCFC205FC	UCFC205FD	43	1 21/32	1.1	—	—	—	—	—	—
																			UCFC206C	UCFC206D	36.5	1 7/16	1.2	—	—	—	—	—	—	—	—	—	—	—
20 7/8	4 3/8	2.9921	3 5/8	2 9/16	3/8	15/16	25/64	15/64	1 9/32	1.500	0.626	5/16	FCX05	UCX05 UCX05-16	1.2 1.2	19.5	11.3	13.9	UCFCX05C	UCFCX05D	36.5	1 7/16	1.2	—	—	—	—	—	—	—	—	—	—	
																			UCFCX06C	UCFCX06D	38	1 1/2	1.5	—	—	—	—	—	—	—	—	—	—	—
25 1 5/16	4 29/32	3.1496	3 15/16	2 25/32	15/32	29/32	25/64	5/16	1 9/32	1.500	0.626	3/8	FC206	UC206-18 UC206 UC206-19 UC206-20	1.3 1.3 1.3	19.5	11.3	13.9	UCFC206C	UCFC206D	36.5	1 7/16	1.3	UCFC206FC	UCFC206FD	45	1 25/32	1.6	—	—	—	—	—	—
																			UCFCX06C	UCFCX06D	38	1 1/2	1.5	—	—	—	—	—	—	—	—	—	—	—
30 1 3/16	5	3.3465	4 9/64	2 59/64	15/32	7/8	5/16	3/8	1 5/16	1.689	0.689	3/8	FCX06	UCX06 UCX06-19 UCX06-20	1.5 1.5 1.5	25.7	15.4	13.9	UCFCX06C	UCFCX06D	38	1 1/2	1.5	—	—	—	—	—	—	—	—	—	—	
																			UCFCX07C	UCFCX07D	43.5	1 23/32	1.9	—	—	—	—	—	—	—	—	—	—	—
35 1 1/4	5 5/16	3.5433	4 21/64	3 1/16	35/64	1 1/32	7/16	5/16	1 7/16	1.689	0.689	7/16	FC207	UC207-20 UC207-21 UC207-22 UC207	1.7 1.7 1.7 1.7	25.7	15.4	13.9	UCFC207C	UCFC207D	41	1 5/8	1.7	UCFC207FC	UCFC207FD	50	1 31/32	2.1	—	—	—	—	—	—
																			UCFCX07C	UCFCX07D	43.5	1 23/32	1.9	—	—	—	—	—	—	—	—	—	—	—
40 1 9/16	5 23/32	3.9370	4 23/32	3 11/32	35/64	1 1/32	7/16	25/64	1 5/8	1.937	0.748	7/16	FC208	UC208-24 UC208-25 UC208	2.0 2.0 2.0	29.1	17.8	14.0	UCFC208C	UCFC208D	45.5	1 25/32	2.0	UCFC208FC	UCFC208FD	54	2 1/8	2.4	—	—	—	—	—	
																			UCFCX08C	UCFCX08D	43.5	1 23/32	2.0	—	—	—	—	—	—	—	—	—	—	—
45 1 7/8	5 1/4	3.6220	4 3/8	3 3/32	15/32	1 1/32	23/64	7/16	1 17/32	1.937	0.748	3/8	FCX08	UCX08-24 UCX08	2.0 2.0	34.1	21.3	14.0	UCFCX08C	UCFCX08D	43.5	1 23/32	2.0	—	—	—	—	—	—	—	—	—		
																			UCFCX09C	UCFCX09D	45	1 25/32	2.6	—	—	—	—	—	—	—	—	—	—	—
50 1 15/16	6 5/16	4.1339	5 13/64	3 43/64	5/8	1 1/32	25/64	15/32	1 19/32	1.937	0.748	1/2	FC209	UC209-26 UC209-27 UC209-28 UC209	2.6 2.6 2.6 2.6	34.1	21.3	14.0	UCFC209C	UCFC209D	44.5	1 3/4	2.6	UCFC209FC	UCFC209FD	54	2 1/8	3.0	—	—	—	—	—	
																			UCFCX09C	UCFCX09D	45	1 25/32	2.6	—	—	—	—	—	—	—	—	—	—	—
50 2	6 3/32	4.2520	5 1/8	3 5/8	35/64	31/32	5/16	15/32	1 19/32	2.031	0.748	7/16	FCX09	UCX09-27 UCX09-28 UCX09	2.6 2.6 2.6	35.1	23.3	14.4	UCFCX09C	UCFCX09D	45	1 25/32	2.6	—	—	—	—	—	—	—	—	—		
																			UCFCX10C	UCFCX10D	45	1 25/32	3.2	—	—	—	—	—	—	—	—	—	—	—
50 1 15/16	6 1/2	4.3307	5 7/16	3 27/32	5/8	1 3/32	25/64	15/32	1 11/16	2.031	0.748	1/2	FC210	UC210-30 UC210-31 UC210 UC210-32	2.9 2.9 2.9 2.9	35.1	23.3	14.4	UCFC210C	UCFC210D	47	1 27/32	2.9	UCFC210FC	UCFC210FD	58.5	2 5/16	3.4	—	—	—	—	—	
																			UCFCX10C	UCFCX10D	45	1 25/32	3.2	—	—	—	—	—	—	—	—	—	—	—
50 2	6 3/8	4.6457	5 23/64	3 25/32	35/64	31/32	9/32	5/8	1 19/32	2.189	0.874	7/16	FCX10	UCX10 UCX10-32	3.2 3.2	43.4	29.4	14.4	UCFCX10C	UCFCX10D	45	1 25/32	3.2	—	—	—	—	—	—	—	—	—		
																			UCFCX11C	UCFCX11D	45	1 25/32	3.2	—	—	—	—	—	—	—	—	—	—	—

Remarks 1. In Part No. of unit and units with covers, fitting codes follow bore diameter numbers. (See Table 10.5 in P.62.)  
2. Part No. of applicable grease fittings are shown below.  
A-1/4-28UNF ..... 201~210, X05~X09  
A-R1/8 ..... 211~218, X10~X20

3. As for the triple seal type product (from 201 to 205 are the double seal type products), suffix code L3 (L2) follows the Part No. of unit or bearing. (Example of Part No.: UCFC206JL3, UC206L3)  
4. For the dimensions and forms of applicable bearings, see the dimensional tables of ball bearing for unit.  
5. Housings of nodular graphite cast iron are also available.