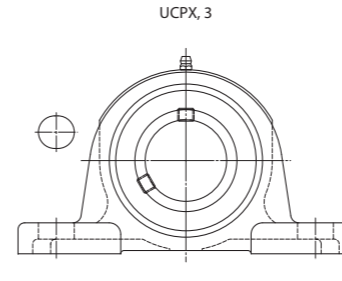
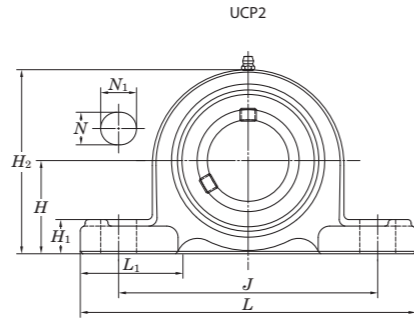
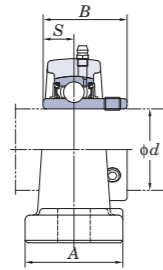
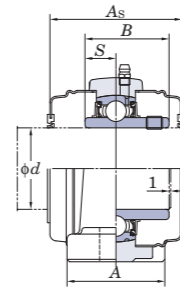


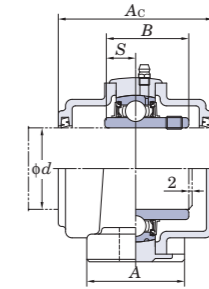
**UCP**  
Cylindrical bore (with set screws)  
d (45) ~ (75) mm



With Pressed Steel Cover



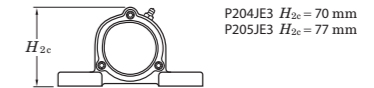
With Cast Iron Cover



Variations of tolerance of distance from mounting bottom to center of spherical bore ( $\Delta H_{2c}$ )

Housing No.	$\Delta H_{2c}$
P203~P210	$\pm 0.15$
P211~P218	$\pm 0.2$
PX20	$\pm 0.3$

Forms and dimensions of  $H_{2c}$  of P204JE3 and P205JE3 (housing with cast iron cover) are shown below.



Shaft Dia. mm inch	Dimensions inch mm												Bolt Size inch mm	Standard			Mass kg	Basic Load Ratings kN		Factor $f_0$	With Pressed Steel Cover				With Cast Iron Cover			
	H	L	A	J	N	N <sub>1</sub>	H <sub>1</sub>	H <sub>2</sub>	L <sub>1</sub>	B	S	Unit No.		Housing No.	Bearing No.	Unit No.		Dimension mm inch	Mass kg		Unit No.	Dimension mm inch	Mass kg					
45 1 3/4	2 41/64	9 21/32	2 5/8	7 15/32	25/32	1 3/16	13/16	5 3/16	2 15/16	2.244	0.866	5/8	UCP309-28	P309	UC309-28	4.9	48.9	29.5	13.3	-	-	-	-	-	-	-	-	-
	67	245	67	190	20	30	21	132	75	57	22	M16	UCP309		UC309	4.9							UCP309C	UCP309CD	102	4 1/32	6.2	
50 1 7/8 1 15/16 2 1 15/16	2 1/4	8 1/8	2 3/8	6 1/4	25/32	7/8	13/16	4 7/16	2 3/8	2.031	0.748	5/8	UCP210-30	P210	UC210-30	2.9												
	57.2	206	60	159	20	22	21	113	60	51.6	19	M16	UCP210-31		UC210-31	2.9												
	2												UCP210		UC210	2.9												
	1 15/16	2 1/2	9 1/2	2 7/8	6 23/32	25/32	1 13/32	7/8	4 31/32	3	2.189	0.874	5/8	UCPX10-31	PX10	UCX10-31	4.6											
50 2	63.5	241	73	171	20	36	22	126	76	55.6	22.2	M16	UCPX10		UCX10	4.6												
	2												UCPX10-32		UCX10-32	4.6												
55 2 1/8 2 3/16 2 1/4	2 61/64	10 13/16	2 15/16	8 11/32	25/32	1 3/8	15/16	5 13/16	3 15/32	2.402	0.866	5/8	UCP310	P310	UC310	6.6	62.0	38.3	13.2	-	-	-	-	-	-	-	-	
	75	275	75	212	20	35	24	148	88	61	22	M16																
	2 1/8	2 1/2	8 5/8	2 3/8	6 23/32	25/32	7/8	29/32	4 29/32	2 9/16	2.189	0.874	5/8	UCP211-32	P211	UC211-32	3.6											
	2 3/16	63.5	219	60	171	20	22	23	125	65	55.6	22.2	M16	UCP211-34		UC211-34	3.6											
55 2 3/16 2 1/4	2 3/4	10 1/4	3 1/8	7 1/4	31/32	1 13/32	1 3/32	5 15/32	3 9/32	2.563	1.000	3/4	UCPX11	PX11	UCX11	6.5												
	69.8	260	79	184	25	36	28	139	83	65.1	25.4	M20	UCPX11-35		UCX11-35	6.5												
	2 1/4												UCPX11-36		UCX11-36	6.5												
	2	3 5/32	12 7/32	3 5/32	9 9/32	25/32	1 1/2	1 1/16	6 7/32	3 17/32	2.598	0.984	5/8	UCP311-32	P311	UC311-32	7.9											
60 2 3/8 2 7/16	80	310	80	236	20	38	27	158	90	66	25	M16	UCP311		UC311	7.9												
	2 3/8	2 3/4	9 1/2	2 3/4	7 1/4	25/32	31/32	31/32	5 7/16	2 7/8	2.563	1.000	5/8	UCP212-36	P212	UC212-36	4.9											
	2 7/16	69.8	241	70	184	20	25	25	138	73	65.1	25.4	M16	UCP212		UC212	4.9											
	2 7/16												UCP212-38		UC212-38	4.9												
60 2 7/16	3	11 1/4	3 1/4	8	31/32	1 9/16	1 3/32	5 31/32	3 15/32	2.563	1.000	3/4	UCPX12	PX12	UCX12	7.7												
	76.2	286	83	203	25	40	28	152	88	65.1	25.4	M20	UCPX12-39		UCX12-39	7.7												
	2 7/16	3 11/32	13	3 11/32	9 27/32	31/32	1 1/2	1 5/32	6 9/16	4 1/16	2.795	1.024	3/4	UCP312	P312	UC312	9.5											
	85	330	85	250	25	38	29	167	103	71	26	M20	UCP312-39		UC312-39	9.5												
65 2 1/2	3	10 7/16	2 3/4	8	31/32	1 3/16	1 1/16	5 29/32	3 1/16	2.563	1.000	3/4	UCP213-40	P213	UC213-40	5.9												
	76.2	265	70	203	25	30	27	150	78	65.1	25.4	M20	UCP213		UC213	5.9												
	2 1/2	3	11 1/4	3 1/4	8	31/32	1 9/16	1 3/32	6 3/32	3 15/32	2.937	1.189	3/4	UCPX13-40	PX13	UCX13-40	8.1											
	76.2	286	83	203	25	40	28	155	88	74.6	30.2	M20	UCPX13		UCX13	8.1												
65 2 1/2	3 35/64	13 3/8	3 17/32	10 1/4	31/32	1 1/2	1 1/4	6 15/16	4 11/32	2.953	1.181	3/4	UCP313-40	P313	UC313-40	10.7												
	90	340	90	260	25	38	32	176	110	75	30	M20	UCP313		UC313	10.7												
	2 3/4	3 1/8	10 15/32	2 27/32	8 9/32	31/32	1 3/16	1 1/16	6 3/16	2 15/16	2.937	1.189	3/4	UCP214-44	P214	UC214-44	6.8											
	79.4	266	72	210	25	30	27	157	75	74.6	30.2	M20	UCP214		UC214	6.8												
70 2 3/4	3 1/2	13	3 1/2	9	1 1/16	1 31/32	1 1/4	6 23/32	3 27/32	3.063	1.331	7/8	UCPX14-44	PX14	UCX14-44	10.2												
	88.9	330	89	229	27	50	32	171	98	77.8	33.3	M22	UCPX14		UCX14	10.2												
	2 3/4	3 47/64	14 3/16	3 17/32	11 1/32	1 1/16	1 9/16	1 3/8	7 5/16	4 11/32	3.071	1.299	7/8	UCP314-44	P314	UC314-44	12.4											
	95	360	90	280	27	40	35	186	110	78	33	M22	UCP314		UC314	12.4												
75 2 15/16 3 2 15/16	3 1/4	10 13/16	2 29/32	8 17/32	31/32	1 3/16	1 3/32	6 3/8	3 1/16	3.063	1.311	3/4	UCP215-47	P215	UC215-47	7.4												
	82.6	275	74	217	25	30	28	162	78	77.8	33.3	M20	UCP215		UC215	7.4												
	2 15/16	3 1/2	13	3 1/2	9	1 1/16	1 31/32	1 1/4	6 7/8	3 29/32	3.252	1.311	7/8	UCPX15-47	PX15	UCX15-47	10.8											
	88.9	330	89	229	27	50	32	175	99	82.6	33.3	M22	UCPX15		UCX15	10.8												

Remarks 1. In Part No. of unit and units with covers, fitting codes follow bore diameter numbers. (See Table 10.5 in P.62.)  
2. Part No. of applicable grease fittings are shown below.  
A-1/4-28UNF ..... 201~210, X05~X09, 305~308  
A-R1/8..... 211~218, X10~X20, 309~328

3. As for the triple seal type product (from 201 to 205 are the double seal type products), suffix code L3 (or L2) follows the Part No. of unit or bearing. (Example of Part No.: UCP206JL3, UC206L3)  
4. For the dimensions and forms of applicable bearings, see the dimensional tables of ball bearing for unit.  
5. Representative examples of the forms of housing are indicated.  
6. Housings of nodular graphite cast iron are also available.