

Lube oil filter

Function

- To remove the contaminants in lube oil before lube oil is supplied to each bearing.

Note

- Two 100% capacity lube oil filters are used alternately. (One for stand-by)
- When some troubles occur on operating one, it is possible to operate continuously by changing over to the stand-by one with operating the 6-port transfer valve.
- Filtration : 200 meshed (App. 75 micro meter).

Fig. 17

Outline drawing for Lube oil filter

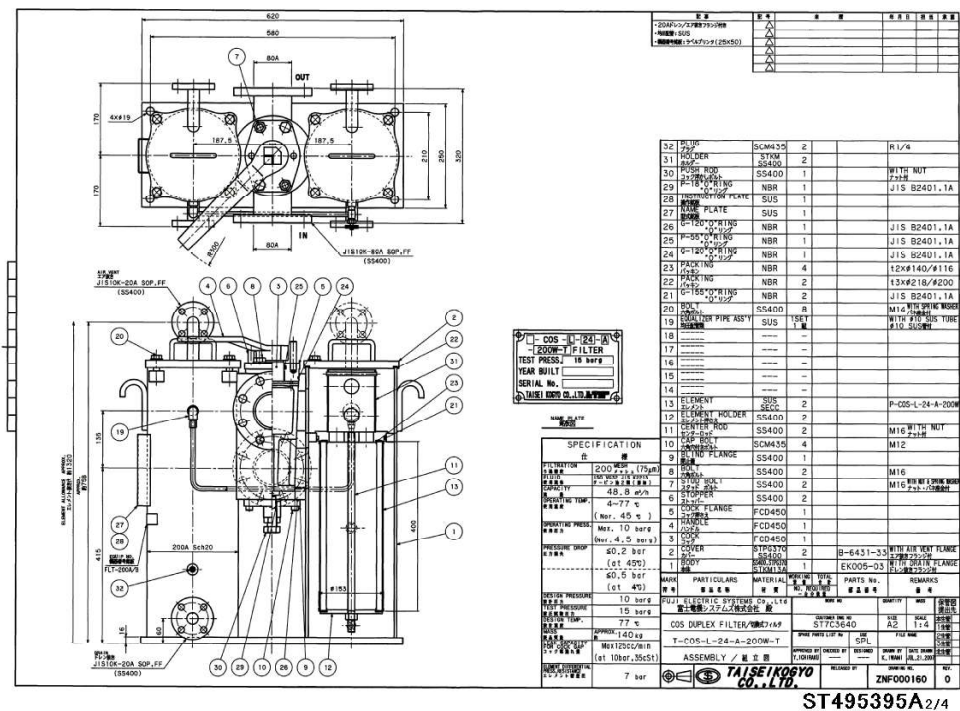
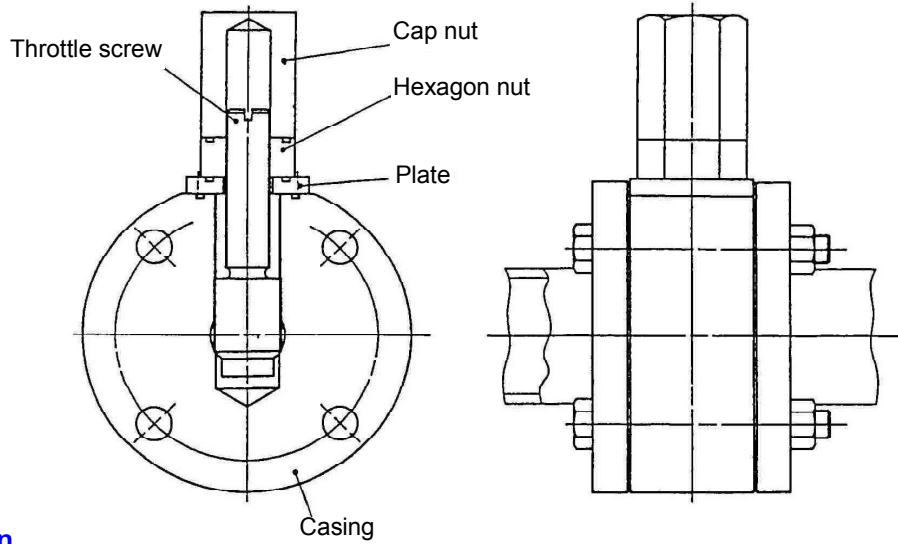


Fig. 18

ST495395A/2/4

Lube oil throttle flange



Function

- Adjusting the lube oil pressure to 2.5barG at turbine center level.

Note

- Adjustment of the throttle will be carried out during commissioning.
- Do not change the position of throttle after commissioning. It could cause the fatal damage to steam turbine and generator bearings.

Fig. 19

P&I (Around Lube oil cooler)

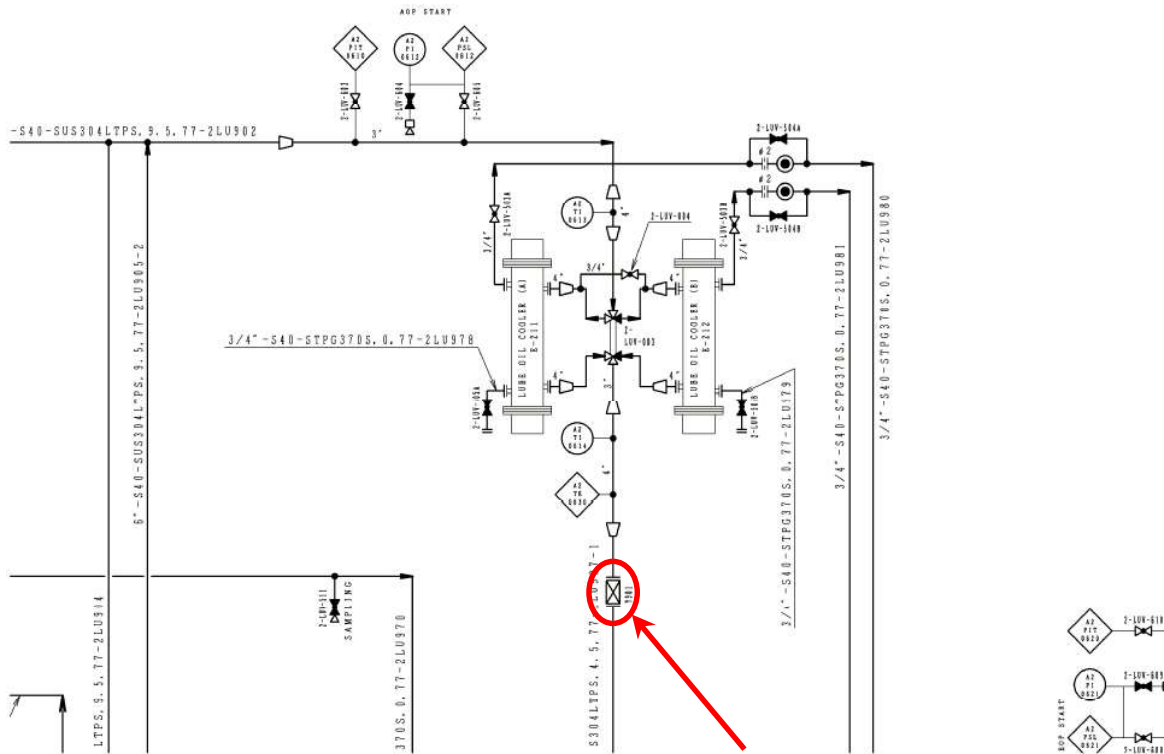


Fig. 20

Lube oil throttle flange