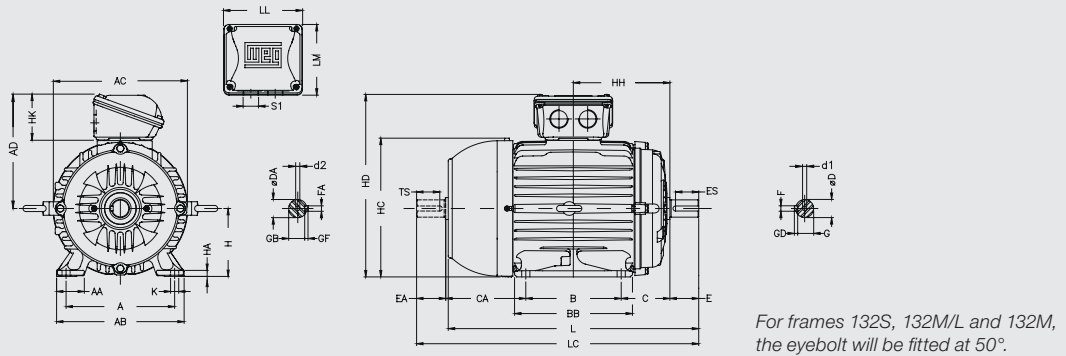


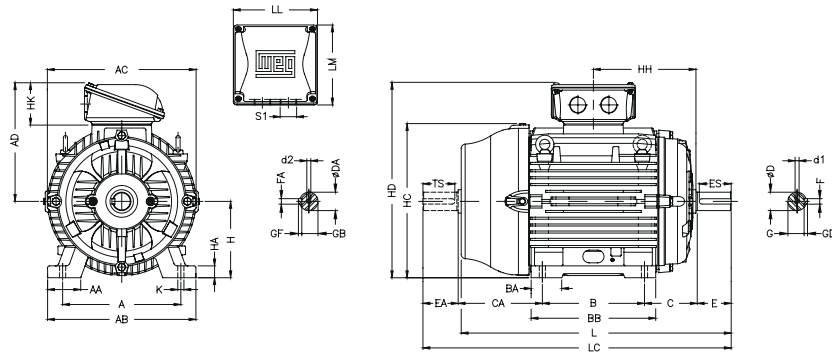
18. Mechanical Data

Foot Mounted Motors, Terminal Box Top

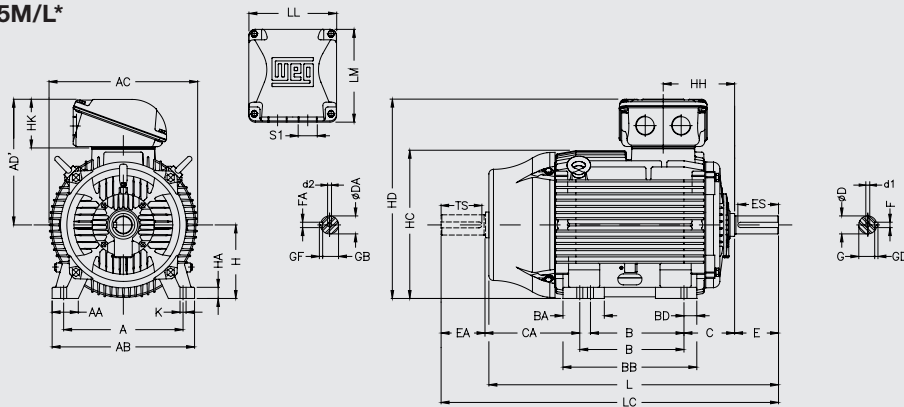
Frames 63 to L132M/L



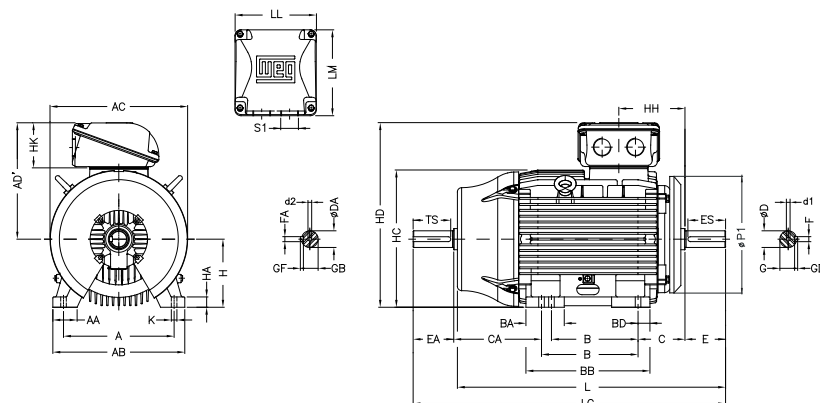
Frames 160M to 200L



Frames 225 to 355M/L*



Frame 355A/B*



* Some outputs in frame sizes 315 and 355 are equipped with an air deflector at the DE. In this case the dimension P1 will be 780mm and 880mm for frames 315 and 355 respectively.

Frame	A	AA	AB	AC	AD	AD'	B	BA	BB	BD	C	CA	DE shaft end						NDE shaft end																																																																																																																																																																																																					
													D	E	ES	F	G	GD	DA	EA	TS	FA	GB	GF																																																																																																																																																																																																
63	100	25,5	116	125	123		80		95		40	78	11j6	23	14	4	8,5	4	9j6	20	12	3	7,2	3																																																																																																																																																																																																
71	112	28,5	132	141	131		90		113,5		45	88	14j6	30	18	5	11	5	11j6	23	14	4	8,5	4																																																																																																																																																																																																
80	125	30,5	149	159	140		100		125,5		50	93	19j6	40	28	6	15,5	6	14j6	30	18	5	11	5																																																																																																																																																																																																
L80																									142	19j6	40	28	6	15,5	6	14j6	30	18	5	11	5																																																																																																																																																																																			
90S	140	37	164	179	149		125		156		56	135	24j6	50	36	8	20	7	16j6	40	28	5	13	5																																																																																																																																																																																																
L90S																									173	63	118	162	28j6	60	45	8	24	22j6	50	36	6	18,5	6																																																																																																																																																																																	
90L																																								177	128	158	70	24j6	50	36	6	18,5	6																																																																																																																																																																							
L90L																																																		187	177	158	70	24j6	50	36	6	18,5	6																																																																																																																																																													
100L	160	40	188	206	159		178		225		89	150	38k6	80	63	10	33	8	28j6	60	45	8	24	7																																																																																																																																																																																																
L100L																									178/203	254	63	254	254	254	254	254	254	254	254	254	254	254	254	254	254	254	254	254	254	254	254	254																																																																																																																																																																								
112M																																																	210	254	63	254	254	254	254	254	254	254	254	254	254	254	254	254	254	254	254	254	254	254	254	254																																																																																																																																																
L112M																																																																									210	254	63	254	254	254	254	254	254	254	254	254	254	254	254	254	254	254	254	254	254	254	254	254																																																																																																																								
132S																																																																																																	210	254	63	254	254	254	254	254	254	254	254	254	254	254	254	254	254	254	254	254	254	254	254	254																																																																																																
L132S																																																																																																																									210	254	63	254	254	254	254	254	254	254	254	254	254	254	254	254	254	254	254	254	254	254	254	254																																																																								
132M																																																																																																																																																	210	254	63	254	254	254	254	254	254	254	254	254	254	254	254	254	254	254	254	254	254	254	254	254																																																
L132M/L																																																																																																																																																																									210	254	63	254	254	254	254	254	254	254	254	254	254	254	254	254	254	254	254	254	254	254	254	254																								
160M																																																																																																																																																																																																	210	254	63	254	254	254	254	254	254	254	254	254	254	254	254	254	254	254	254	254	254	254	254	254
L160L																																																																																																																																																																																																																								
180M	279	78	350	360	281		241		294		121	200	48k6	110	80	14	42,5	9	48k6	110	80	14	42,5	9																																																																																																																																																																																																
L180M																									279	78	350	360	281	241		294		121	200	48k6	110	80	14	42,5	9	48k6	110	80	14	42,5	9																																																																																																																																																																									
180L																																																279	78	350	360	281	241		294		121	200	48k6	110	80	14	42,5	9	48k6	110	80	14	42,5	9																																																																																																																																																		
L180L																																																																							279	78	350	360	281	241		294		121	200	48k6	110	80	14	42,5	9	48k6	110	80	14	42,5	9																																																																																																																											
200L	318	82	385	402	319		305	82	370		133	222	55m6						55m6																																																																																																																																																																																																					
225S/M*	356	80	436	455		384	286/311	124	412	41	149	319/294	55m6						55m6																																																																																																																																																																																																					
225S/M																									406	100	506	486	402	311/349	146	467	59	168	354/316	60m6	140	125	18	53	11	60m6	140	125	18	53	11																																																																																																																																																																									
250S/M*	406	100	506	486	402	311/349	146	467	59	168	354/316	60m6	140	125	18	53	11	60m6	140	125	18	53	11																																																																																																																																																																																																	
250S/M																								406																								100	506	486	402	311/349	146	467	59	168	354/316	60m6	140	125	18	53	11	60m6	140	125	18	53	11																																																																																																																																																			
280S/M*																																																																						406	100	506	486	402	311/349	146	467	59	168	354/316	60m6	140	125	18	53	11	60m6	140	125	18	53	11																																																																																																																												
280S/M																																																																																													406	100	506	486	402	311/349	146	467	59	168	354/316	60m6	140	125	18	53	11	60m6	140	125	18	53	11																																																																																																					
315S/M*																																																																																																																				406	100	506	486	402	311/349	146	467	59	168	354/316	60m6	140	125	18	53	11	60m6	140	125	18	53	11																																																																														
315S/M																																																																																																																																											406	100	506	486	402	311/349	146	467	59	168	354/316	60m6	140	125	18	53	11	60m6	140	125	18	53	11																																																							
315L*																																																																																																																																																																		406	100	506	486	402	311/349	146	467	59	168	354/316	60m6	140	125	18	53	11	60m6	140	125	18	53	11																																
315L																																																																																																																																																																																									406	100	506	486	402	311/349	146	467	59	168	354/316	60m6	140	125	18	53	11	60m6	140	125	18	53	11									
355M/L*																																																																																																																																																																																																																406	100	506	486	402	311/349	146	467	59
355M/L	610	140	750	736		620	560/630	230	760	65	254	483/413	75m6	140	125	20	67,5	12	60m6	140	125	18	53	11																																																																																																																																																																																																
355A/B*																									610	140	750	736	620	560/630	230	760	65	254	483/413	75m6	140	125	20	67,5	12	60m6	140	125	18	53	11																																																																																																																																																																									
355A/B																																																610	140	750	736	620	560/630	230	760	65	254	483/413	75m6	140	125	20	67,5	12	60m6	140	125	18	53	11																																																																																																																																																		
L355A/B																																																																							610	140	750	736	620	560/630	230	760	65	254	483/413	75m6	140	125	20	67,5	12	60m6	140	125	18	53	11																																																																																																																											

Frame	H	HA	HC	HD	HH	HK	LL	LM	K	L	LC	S1	D1	D2	Bearing																													
															DE	NDE																												
63	63	7	130	186	80	59	108	98	7	216	241	2xM20x1,5	EM4	EM3	6201 ZZ	6201 ZZ																												
71	71		145	202	90					250	276		DM5	EM4	6202 ZZ	6202 ZZ																												
80	80	8	163	220	100					106	325		360	10	277	313	2xM25x1,5	DM6	DM4	6204 ZZ	6203 ZZ																							
L80															305	350						334,5	381	329	375	360	406	376	431	DM8	DM6	6205 ZZ	6204 ZZ											
90S																																		394	448	423	478	452	519	476	544	DM10	DM8	6206 ZZ
L90S	90	9	182	239	118,5				159	178	190,5	12	418	475	2xM32x1,5	DM12	DM10	6308 ZZ	6207 ZZ																									
90L													394	448						423	478	452	519	476	544	DM12	DM10	6308 ZZ	6207 ZZ															
L90L	100	10	203	259	133				178	190,5	213	14	489	557	2xM40x1,5	DM16	DM16	6309 ZZ-C3	6209 ZZ-C3																									
100L													241,5	101						198,5	190	14,5	744	862	598	712	642	756	DM20	DM20	6311 ZZ-C3	6211 ZZ-C3												
L100L																																	260,5	101	198,5	190	14,5	706	824	664	782	706	824	DM20
112M						260,5	101	198,5																																				
L112M	225	34	453	609	212	153	269	285	18,5	767	880	2xM50x1,5	DM20	DM20	6312 ZZ-C3	6212 ZZ-C3																												
132S										250	43						493	648	214	24	965	1113	24	856	974	2xM63x1,5	DM20	DM20	6314 C3	6314 C3														
L132S	250	43	493	648	214	24	965	1113	24	886	1034	2xM80x2	DM24	DM20	6316 C3	6316 C3																												
132M										280	42						580	752	266	152																								

Frame	A	AA	AB	AC	AD	B	BA	BB	BD	C	CA	DE Shaft					NDE Shaft																		
												D	E	ES	F	G	GD	DA	EA	TS	FA	GB	GF												
63	100	25,5	116	125	123	80		95		40	78	11j6	23	14	4	8,5	4	9j6	20	12	3	7,2	3												
71	112	28,5	132	141	131	90		113,5		45	88	14j6	30	18	5	11	5	11j6	23	14	4	8,5	4												
80	125	30,5	149	159	140	100		125,5		50	93 142	19j6	40	28	6	15,5	6	14j6	30	18	5	11	5	11j6	23	14	4	8,5	4	9j6	20	12	3	7,2	3
L80																																			
90S	140	37	164	179	149					125		156		56	135	24j6	50	36		20		16j6	40	28		5	13	5							
L90S																																			
90L	160	40	188	206	159					173		173		63	118 162	28j6	60	45		24		22j6	50	36		6	18,5	6							
L90L																																			
100L	190	40,5	220	215	192					140	177		187		70	128 158						24j6	50	36		8	24	7							
L100L																																			
112M	216	45,5	248	272	220					178		225		89	150	38k6	80	63	10	33		28j6	60	45		8	24	7							
L112M																																			
132S	254	44	292	329	266	178/203		250		108	174	42k6						42k6	110	80		8	24	7											
L132S																																			
132M	279	78	350	360	281	210	63	254		121	200	48k6	110	80				48k6	110	80		8	24	7											
L132M																																			
132M/L	318	82	385	402	319	210	70	294		121	200	48k6	110	80				48k6	110	80		8	24	7											
L132M/L																																			
160M	254	44	292	329	266	210	63	254		108	174	42k6						42k6	110	80		8	24	7											
L160M																																			
180M	279	78	350	360	281	241	70	294		121	200	48k6	110	80				48k6	110	80		8	24	7											
L180M																																			
180L	318	82	385	402	319	305	82	370		133	222	55m6						55m6	140	125	18	53	11	60m6	11										
L180L																																			
200L	356	80	436	455	410	286/311	124	412	41	149	319/294	60m6						60m6	140	125	18	53	11	60m6	11										
225S/M*																																			
225S/M	406	100	506	486	445	311/349	146	467	59	168	354/316	65m6	140	125	18	53	11	60m6	140	125	18	53	11	60m6	11										
250S/M*																																			
250S/M	457	557	599	445	368/419	151	517	49	190	385/334	75m6							65m6	140	125	18	53	11	60m6	11										
280S/M*																																			
280S/M	508	120	630	657	525	406/457	184	626	70	216	494/443	80m6	170	160	22	71	14	65m6	140	125	18	53	11	60m6	11										
315S/M*																																			
315S/M	508	120	630	657	525	406/457	184	626	70	216	494/443	80m6	170	160	22	71	14	65m6	140	125	18	53	11	60m6	11										
315L*																																			
315L	610	140	750	736	609	560/630	230	760	65	254	483/413	75m6	140	125	20	67,5	12	60m6	140	125	18	53	11	60m6	11										
355M/L*																																			
355M/L	610	140	750	736	701	710/800	325	955	70	254	528/438	100m6	210	200	28	90	16	80m6	170	160	22	71	14	60m6	11										
355A/B*																																			
355A/B	610	140	750	736	701	710/800	325	955	70	254	528/438	100m6	210	200	28	90	16	80m6	170	160	22	71	14	60m6	11										
355A/B																																			

Frame	H	HA	HB	HC	HD	HF	HG	HH	HK	LL	LM	K	L	LC	S1	d1	d2	Bearing	
																		DE	NDE
63	63	7	25,5	130	156,3	68,5		80							2xM20x1,5	EM4	EM3	6201 ZZ	6201 ZZ
71	71		33	145	163,8	76		90								DM5	EM4	6202 ZZ	6202 ZZ
80	80	8	43,5	163	174,3	87		100	59	108	98					DM6	DM4	6204 ZZ	6203 ZZ
L80																			
90S	90	9	45	182	182,4	90		106								DM8	DM6	6205 ZZ	6204 ZZ
L90S																			
90L	100	10	61,5	205	244	106,4		118,5								DM10	DM8	6206 ZZ	6205 ZZ
L90L																			
100L	112		54,5	235	280	112		133								DM12	DM10	6308 ZZ	6207 ZZ
L100L																			
112M	132	16	75	274	319	132		140	80	140	133					DM12	DM10	6308 ZZ	6207 ZZ
L112M																			
132S	160	17	79	331	380			159								DM16	DM16	6309 ZZ-C3	6209 ZZ-C3
L132S																			
132M	180	28	92	366	413			178	101	198,5	190					DM16	DM16	6311 ZZ-C3	6211 ZZ-C3
L132M																			
132M/L	200	30	119	407	464			190,5								DM16	DM16	6311 ZZ-C3	6211 ZZ-C3
L132M/L																			
160M	225	34	254	453	541	421	534	212	153	269	285					DM16	DM16	6312 ZZ-C3	6212 ZZ-C3
L160M																			
160L	250	43	297	493	583	463	577	214								DM20	DM20	6314 C3	6314 C3
L160L																			
180M	280	42	386	580	700	572	686	266	152	314	312					DM20	DM20	6316 C3	6316 C3
L180M																			
180L	315	48	644	768	592	751	264	176	379	382						DM20	DM20	6319 C3	6319 C3
L180L																			
200L	355	50	723	898	700	885		285	220	404	436					DM20	DM20	6319 C3	6319 C3
225S/M*																			
225S/M	411							339								DM24	DM24	6316 C3	6314 C3
250S/M*																			
250S/M	340							340								DM20	DM20	6322 C3	6319 C3
280S/M*																			
280S/M	340							340								DM24	DM24	6316 C3	6314 C3
315S/M*																			
315S/M	340							340								DM24	DM24	6322 C3	6319 C3
315L*																			
315L	340							340								DM24	DM24	6322 C3	6319 C3
355M/L*																			
355M/L	340							340								DM24	DM24	6322 C3	6319 C3
355A/B*																			
355A/B	340							340								DM24	DM24	6322 C3	6319 C3
355A/B																			

Notes:

(*) Dimension applicable to 2 pole motors.