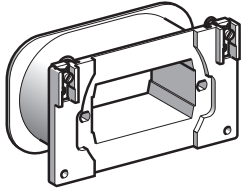


Coils - d.c. with economy resistor Coils - rectified a.c. with economy resistor

DF536173.eps



WB1 KB●

References

For contactors

Contactor	Type Size	CV1 B K	CV3 B L (2 poles)
Associated electromagnet		EB5 KB40	EB5 KB40

Coils

Voltage		Coil		With economy resistor		Number of contacts ZC4 GM2	Rectifier Reference DR5 TE1● (2)	Coil Reference	Weight
d.c. min.	a.c. (1) min.	Resist. at 20 °C ± 10 %	I inrush ± 10 % at Un max.	Resistor Unit reference	Total resist. Ω				
V	V	Ω	A						kg
24	-	1.9	13	DR2 SC0100	100	1	-	WB1 KB154	1.120
-	48	5.9	6.8	DR2 SC0270	270	1	U	WB1 KB132	1.120
48	-	9.5	5.3	DR2 SC0470	470	1	U	WB1 KB133	1.120
-	110	33.1	3.2	DR2 SC1500	1500	1	U	WB1 KB124	1.120
110	127	50.9	2.3	DR2 SC2200	2200	1	U	WB1 KB122	1.120
127	-	61.3	2.1	DR2 SC2700	2700	1	U	WB1 KB135	1.120
-	220	159.9	1.3	DR2 SC8200	8200	1	U	WB1 KB137	1.120
220 - 240	240	199.6	1.2	DR2 SC1001	10 000	1	S	WB1 KB126	1.120
-	380	382	0.82	DR2 SC1801	18 000	1	S	WB1 KB127	1.120
380 - 400	400 - 450	507	0.84	DR2 SC1201	12 000 + 12 000	1	S	WB1 KB128	1.120
440 - 500	500	770	0.64	DR2 SC1801	18 000 + 18 000	2	S	WB1 KB129	1.120

Specifications

- Operating range: 0.85 to 1.1 Uc.
- Time constant when sealed: 45 ms.
- Maximum operating rate: 120 operating cycles/hour ($\theta \leq 55$ °C).

Average consumption	d.c. operation		a.c. (with rectifier)			
	Un min. W	Un max. W	Un min. VA	Un max. W	Un min. VA	Un max. W
Inrush	215	380	260	-	460	-
Sealed (coil)	0.1	0.2	-	0.1	-	0.2
Economy resistor	4.5	8	-	5	-	9

(1) a.c. (50-400 Hz) with individual rectifier and economy resistor, see scheme on page C-2.

(2) Complete the silicon rectifier reference DR5 TE1U or DR5 TE1S.