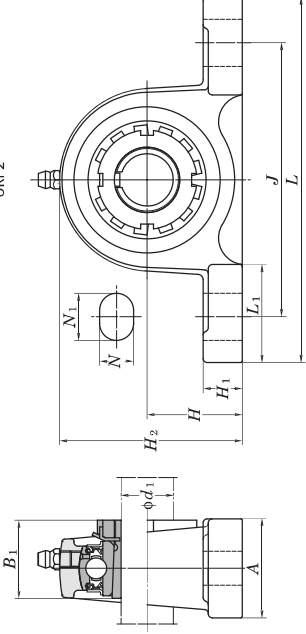


Pillow Block Units

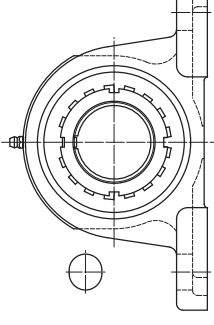
UKP Tapered bore (with adapter) d₁ (50) ~ (90) mm



UKP2



UKPX.3



Shaft Dia. mm	Dimensions													Bolt			Standard Housing			Basic Load Ratings		
	d ₁	H	L	A	J	N	N ₁	H ₁	H ₂	H	L ₁	L	B ₁	Unit No.	Housing No.	Bearing No.	Adapter No.	Mass kg	C _r	C _{0r}		
50	1 7/8	3 5/32	12 7/32	3 1/32	9 9/32	2 5/32	1 1/2	1 1/16	6 7/32	3 17/32	2 5/16	59	59	UKP311	P311	UK311	HS2311X	8.1	71.6	45.0		
	2	2 3/4	9 1/2	2 3/4	7 1/4	2 1/4	3 1/32	3 1/32	5 7/16	2 7/8	2 7/16	62	62	UKP212	P212	UK212	HS2312X	4.8	52.4	36.2		
	2 1/8	69.8	241	70	184	20	25	25	138	73	62	62	62	UKP312	PX12	UKX12	HE2312X	7.5	57.2	40.1		
55	2 1/8	3	11 1/4	3 1/4	8	3 1/32	1 9/16	1 3/32	5 31/32	3 15/32	2 7/16	62	62	UKP213	P213	UK213	HE2313X	5.8	57.2	40.1		
	2 1/8	76.2	286	83	203	25	40	28	152	88	62	62	62	UKP312	P312	UK312	HS2312X	9.4	81.9	52.2		
	2 1/4	85	330	85	250	25	38	29	167	103	62	62	62	UKP213	P213	UK213	HE2313X	5.8	57.2	40.1		
60	2 1/4	3	10 7/16	2 3/4	8	3 1/32	1 3/16	1 1/16	5 29/32	3 1/16	2 9/16	65	65	UKPX13	PX13	UKX13	HE2313X	7.8	62.2	44.1		
	2 3/8	76.2	265	70	203	25	30	27	150	78	65	65	65	UKP313	P313	UK313	HS2313X	10.8	92.7	59.9		
	2 1/4	3	11 1/4	3 1/4	8	3 1/32	1 9/16	1 3/32	6 3/32	3 15/32	2 9/16	65	65	UKP215	P215	UK215	HE2315X	7.5	67.4	48.3		
65	2 3/8	76.2	286	83	203	25	40	28	155	88	65	65	65	UKPX15	PX15	UKX15	HE2315X	10.5	72.7	53.0		
	2 1/4	3 35/64	13 3/8	3 17/32	10 1/4	3 1/32	1 1/2	1 1/4	6 15/16	4 11/32	2 9/16	65	65	UKP313	P313	UK313	HS2313X	10.8	92.7	59.9		
	2 3/8	90	340	90	260	25	38	32	176	110	65	65	65	UKP215	P215	UK215	HE2315X	7.5	67.4	48.3		
70	2 1/2	3 1/4	10 13/16	2 29/32	8 17/32	3 1/32	1 3/16	1 3/32	6 3/8	3 1/16	2 7/8	73	73	UKPX15	PX15	UKX15	HE2315X	10.5	72.7	53.0		
	2 1/2	82.6	275	74	217	25	30	28	162	78	73	73	73	UKP315	P315	UK315	HS2315X	10.5	72.7	53.0		
	2 1/2	3 1/2	13	3 1/2	9	1 1/16	1 31/32	1 1/4	6 7/8	3 29/32	2 7/8	73	73	UKP315	P315	UK315	HE2315X	14.9	113	77.2		
75	2 1/2	3 15/16	14 31/32	3 15/16	11 13/32	1 1/16	1 9/16	1 3/8	7 25/32	4 7/32	2 7/8	73	73	UKP315	P315	UK315	HE2315X	14.9	113	77.2		
	2 3/4	100	380	100	290	27	40	35	198	107	73	73	73	UKP216	P216	UK216	HE2316X	9.2	72.7	53.0		
	2 3/4	88.9	292	78	232	25	35	30	174	83	78	78	78	UKPX16	PX16	UKX16	HE2316X	9.2	72.7	53.0		
75	2 3/4	4	15	4	11 1/8	1 1/16	2 9/32	1 11/32	7 11/16	4 9/16	3 1/16	78	78	UKP316	P316	UK316	HE2316X	15.4	84.0	61.9		
	2 3/4	101.6	381	102	283	27	58	34	195	116	78	78	78	UKP316	P316	UK316	HE2316X	15.4	84.0	61.9		
	2 3/4	4 11/64	15 3/4	4 11/32	11 13/16	1 1/16	1 9/16	1 3/8	8 7/32	4 23/32	3 1/16	78	78	UKP316	P316	UK316	HE2316X	18.6	123	86.7		
75	3	3 3/4	12 7/32	3 3/32	9 23/32	3 1/32	1 3/8	1 1/4	7 9/32	3 7/16	3 3/32	82	82	UKP217	P217	UK217	HE2317X	11.0	84.0	61.9		
	3	95.2	310	83	247	25	35	32	185	87	82	82	82	UKPX17	PX17	UKX17	HE2317X	11.0	84.0	61.9		
	3	4	15	4	11 1/8	1 1/16	2 3/8	1 11/32	7 7/8	4 9/16	3 7/32	82	82	UKP317	P317	UK317	HE2317X	15.8	96.1	71.5		
75	3	4 13/32	16 17/32	4 11/32	12 19/32	1 5/16	1 25/32	1 9/16	8 21/32	4 23/32	3 7/32	82	82	UKP317	P317	UK317	HE2317X	20.2	133	96.8		
	3	112	420	110	320	33	45	40	220	120	82	82	82	UKP317	P317	UK317	HE2317X	20.2	133	96.8		
	3	4	12 7/8	3 15/32	10 5/16	1 1/16	1 9/16	1 5/16	7 25/32	3 11/16	3 3/8	82	82	UKP317	P317	UK317	HE2317X	20.2	133	96.8		