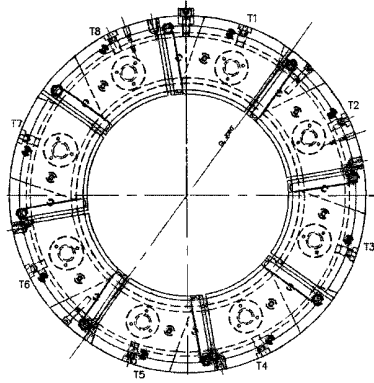
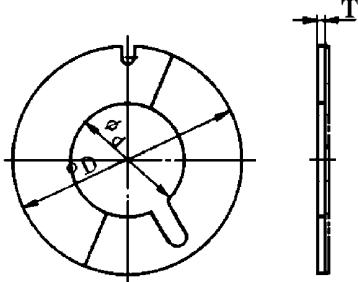
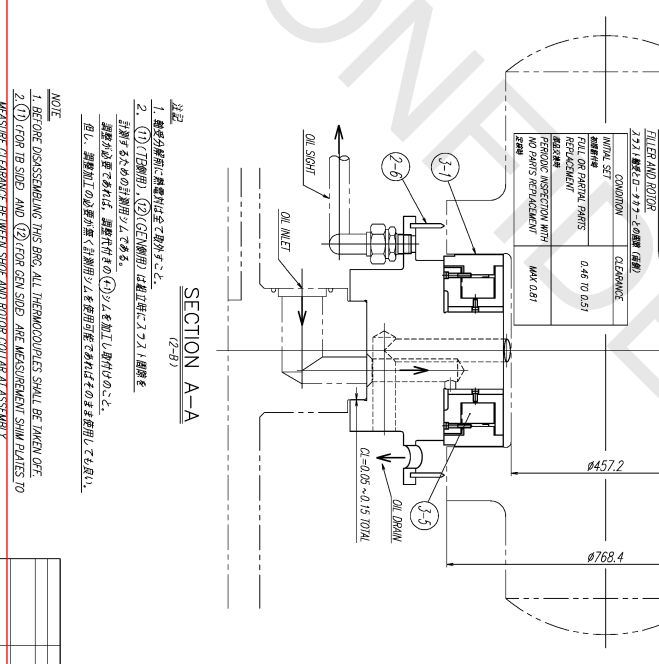
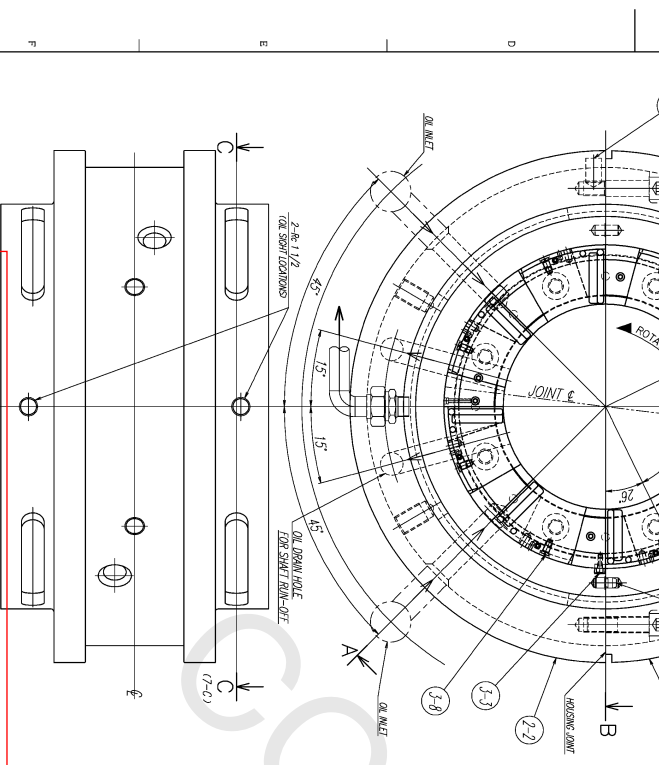
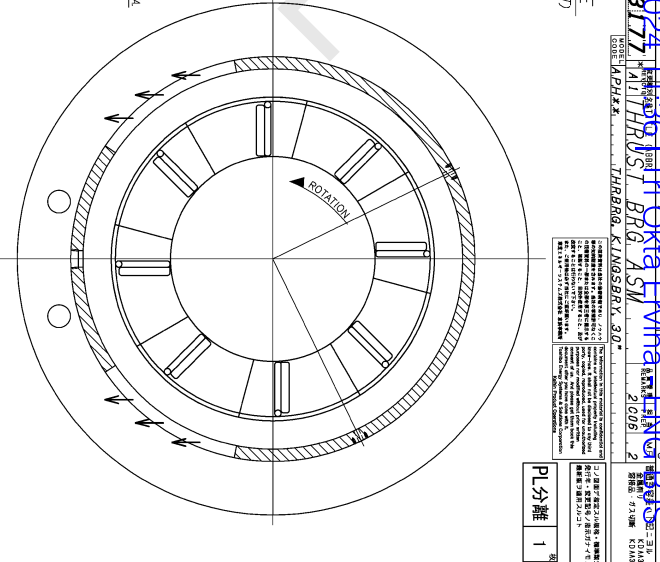
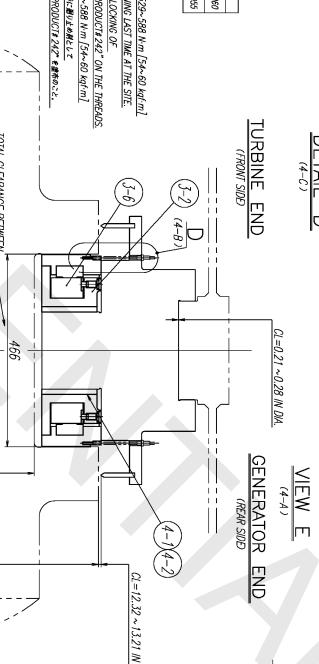
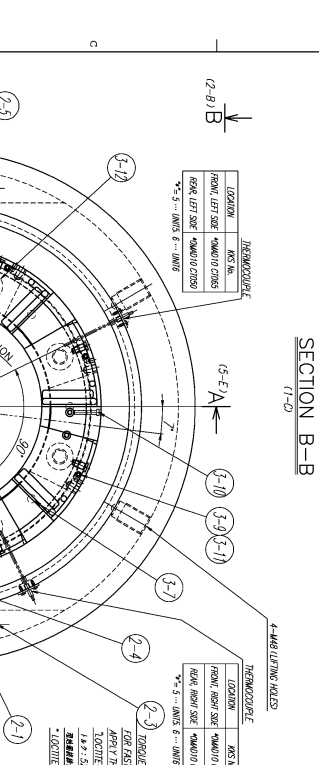
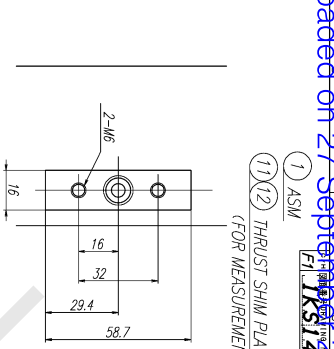
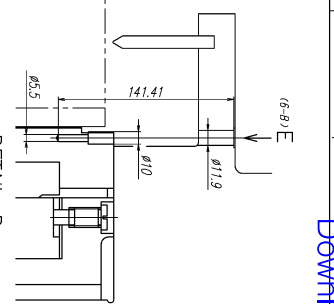
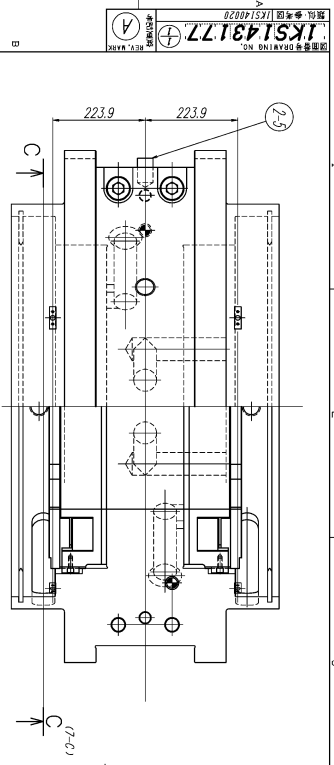


機器名 EQ/SYS.		用途名 USE		客先番号 CUSTOMERS NO.		
蒸気タービン <b>STEAM TURBINE</b>		スラスト軸受 <b>THRUST BEARING</b>		① 製造番号 JOB NO.		
				② 類別 MANUF.COMP.		
③部分 番号 NO.	④品名 NAME OF PART	概略図 OUTLINE	数量 QUANTITY			備考 REMARKS
			常用 WORK/ 1UNIT	常用 WORK/ 2UNIT	予備 SPARE/ 1UNIT	
161.	スラスト軸受 <b>THRUST BEARING</b>		1SET (2P)	2SET (4P)	1SET (2P)	φD= 782.24 φd= 495.3 T= 127  1KS143177
162.	スラスト軸受シム (タービン側) <b>THRUST SHIM (TURBINE SIDE)</b>		1SET (2P)	2SET (4P)	1SET (2P)	φD = 730.25 φd = 195.3 * T = 12.33  3KS124270 P-1
163.	スラスト軸受シム (発電機側) <b>THRUST SHIM (GENERATOR SIDE)</b>	*調整代付とする。 * WITH ADJUSTING ALLOWANCE.	1SET (2P)	2SET (4P)	1SET (2P)	φD = 730.25 φd = 195.3 * T = 12.33  3KS124270 P-2

単位 : mm

UNITS : mm



MATERIAL	DESCRIPTION	NO.	NAME	NO.
STEEL	1 SHIM PLATE (FOR GEN SIDE)	12		
STEEL	1 SHIM PLATE (FOR TB SIDE)	11		
STEEL	12 FILTER PLATE SCREW	4-2		
STEEL	2 FILTER PLATE	4-1		
STEEL	16 SHOE SUPPORT	3-11		
STEEL	16 SHOE REF. SCR. Q-RING	3-12		
STEEL	4 LEVELING PLATE REMAINING SCREW	3-10		
STEEL	16 SHOE REF. SCREW	3-9		
STEEL	16 LEVELING PLATE SET SCREW	3-8		
STEEL	16 LEVELING PLATE DOWEL	3-7		
STEEL	16 LOWER LEVELING PLATE	3-6		
STEEL	16 UPPER LEVELING PLATE	3-5		
STEEL	2 BASE RING KEY	3-3		
STEEL	2 BASE RING	3-2		
CHARMIE COPPER	16 SHOE	3-1		
ALUMINUM	2 SEAL RING	2-6		
STEEL	1 STOP PIN	2-5		
10-0.3Mg-V STEEL	2 DOWEL PIN	2-4		
JIS SCM435	4 HOUSING JOINT BOLT	2-3		
JIS SC 450	1 BEARING HOUSING LOWER	2-2		
JIS SC 450	1 BEARING HOUSING UPPER	2-1		
	1 THRUST BEARING ASSEMBLY	1		

NOTE  
 1. BEFORE DISASSEMBLING THIS BKG, ALL THERMOCOUPLES SHALL BE TAKEN OFF.  
 2. (1) FOR TB SIDE AND (2) FOR GEN SIDE ARE MEASUREMENT SHIM PLATES TO MEASURE CLEARANCE BETWEEN SCREW AND ROTOR CONTACT ASSEMBLY.

注記  
 1. 分解前には必ず温度計を取り外すこと。  
 2. (1) (TB側側) (2) (GEN側側) は軸径に合うように調整し、計測するための計測用シムプレートである。  
 調整が必要であれば、調整可能な(1)のシムプレートを用いて調整すること。  
 但し、調整加工の必要が無く、調整可能な(2)のシムプレートを使用しても可い。

Uncontrolled when printed or distributed. Verify that this is the correct version before copying or using the contents of this document without permission from PT. Bumi

307  
 TOKYO MACHINERY CO., LTD. (T.M.C.)  
 1/11/17/051/B/G/ASM  
 TOKYO MACHINERY CO., LTD. (T.M.C.)  
 1/11/17/051/B/G/ASM