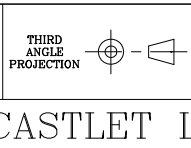


REVISION HISTORY			
ISSUE No.	AC NUMBER	APPROVED	DATE
14			
13			
12	AC414472		
11	AC414434	I.F.	04.06.19
10	AC414416	I.F.	15.05.19
9	AC414390	D.W.	25.04.19
8	AC414381	A.J.M.	07.03.19
7	AC414315	I.F.	03.01.19
6	AC414294	L.J.O.	06.12.18
5	AC414274	I.F.	21.11.18
4	AC414244	I.F.	18.10.18
3	AC414200	A.J.M.	23.08.18
2	AC414160	A.J.M.	05.07.18
1	INITIAL ISSUE	K.H.	06.06.18

TITLE CONTROL CUBICLE
GENERAL ARRANGEMENT
CONTENTS



THE INFORMATION CONTAINED IN THIS PUBLICATION IS CONFIDENTIAL AND IS PROTECTED BY COPYRIGHT. THE INFORMATION MAY NOT BE DISCLOSED EXCEPT WITH THE WRITTEN PERMISSION OF, AND IN A MANNER PERMITTED BY, THE PROPRIETORS CASTLET LIMITED.

GENERAL DIMENSIONAL TOLERANCES
FABRICATION = +/- 3mm
SHEET METALWORK AND FIXINGS = +/- 1mm
MACHINING = +/- 0.5mm
ALL DIMENSIONS IN MILLIMETERS UNLESS OTHERWISE STATED

SCALE N.T.S.
WO NUMBER 26749

DRAWN A.J.M.
CHECKED C.J.W.

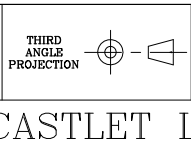
DATE 05.06.2018
DATE 06.06.2018

CASTLET LIMITED - LINCOLN - ENGLAND

DRAWING NUMBER
A307561
SHEET 2 OF 6 SHEETS

	1	2	3	4	5	6	7	8	9	10	REVISION HISTORY			
G	<p>① = SIDEPLATE, 400mm x 1900mm</p> <p>② = RESIDUAL CURRENT DEVICE, RCD</p> <p>③ = MCCBs, AUXQ1, Q2, Q3, Q10</p> <p>④ = MCBS, Q4, Q5, Q6, Q7, Q8, Q9, Q11, QF1, QF2</p> <p>⑤ = RELAY, LT1</p> <p>⑥ = RELAYS, K1, K2, DL, MFT, PPS, PPST, RL1</p> <p>⑦ = MCS III</p> <p>⑧ = TERMINAL BLOCK, TB3 (QTY 13)</p> <p>⑨ = TERMINAL BLOCK, TB4 (QTY 6)</p> <p>⑩ = TERMINAL BLOCK, TB5 (QTY 8)</p> <p>⑪ = TERMINAL BLOCK, TB7 (QTY 8)</p> <p>⑫ = TERMINAL BLOCK, TB8 (QTY 4)</p> <p>⑬ = TERMINAL BLOCK, TB10 (QTY 2)</p> <p>⑭ = CAN INTERFACE, PC2055</p> <p>⑮ = CUBICLE EARTH BAR ASSEMBLY</p> <p>⑯ = TOOL SOCKET, SKT (FOR LAPTOP ONLY)</p> <p>⑰ = CUBICLE FANS, FAN1, FAN2</p> <p>⑱ = CUBICLE LIGHT, CL, WITH DOOR SWITCH, DS</p> <p>⑲ = BACKPLATE, 800mm x 1900mm</p> <p>⑳ = THYRISTOR ASSEMBLY WITH SHROUD, A1</p> <p>㉑ = THYRISTOR ASSEMBLY FUSE, FS1</p> <p>㉒ = THYRISTOR ASSEMBLY FAN TERMINALS</p> <p>㉓ = THYRISTOR ASSEMBLY FAN, A1FAN</p> <p>㉔ = CURRENT TRANSFORMER, CT1</p> <p>㉕ = BURDEN RESISTOR, R1</p> <p>㉖ = CONTACTOR, CON1</p> <p>㉗ = MCCB WITH SHROUD, Q1</p> <p>㉘ = INTERLOCK MOUNTING BRACKET AND CAM</p> <p>㉙ = POWER OUTPUT CONNECTIONS, TB2 (BUSBAR, 40 x 5mm)</p> <p>㉚ = CUSTOMER EARTH CONNECTION (BUSBAR, 40 x 5mm)</p> <p>㉛ = POWER INPUT CONNECTIONS, TB1 (BUSBAR, 40 x 5mm)</p> <p>㉜ = TB1 AND TB2 CONNECTIONS SHROUD</p> <p>㉝ = SIDEPLATE, 400mm x 1900mm</p> <p>㉞ = CONTROL TRANSFORMER, TX2</p> <p>㉟ = CONTROL TRANSFORMER, TX1</p> <p>㊱ = INSTRUMENTATION TRANSFORMER, TX4</p> <p>㊲ = INSTRUMENTATION TRANSFORMER, TX3</p> <p>㊳ = CONTROL TRANSFORMER, TXAUX</p> <p>㊴ = CABLE SUPPORT BAR</p> <p>㊵ = FIBRE OPTIC RECEIVER PC2039</p> <p>㊶ = BUSBAR SUPPORT BRACKET</p> <p>㊷ = MCBS, Q12, Q13</p> <p>⊘ = TRUNKING, 50mm x 50mm</p> <p>⊗ = CUSTOMER TRUNKING, 50mm x 50mm</p>										14			
											13			
F											12	AC414472		
E											11	AC414434	I.F.	04.06.19
D											10	AC414416	I.F.	15.05.19
C											9	AC414390	D.W.	25.04.19
B											8	AC414381	A.J.M.	07.03.19
A											7	AC414315	I.F.	03.01.19
											6	AC414294	L.J.O.	06.12.18
											5	AC414274	I.F.	21.11.18
	4	AC414244	I.F.	18.10.18										
	3	AC414200	A.J.M.	23.08.18										
	2	AC414160	A.J.M.	05.07.18										
	1	INITIAL ISSUE	K.H.	06.06.18										
	ISSUE No.	AC NUMBER	APPROVED	DATE										

TITLE CONTROL CUBICLE
GENERAL ARRANGEMENT
CONTENTS



THE INFORMATION CONTAINED IN THIS PUBLICATION IS CONFIDENTIAL AND IS PROTECTED BY COPYRIGHT. THE INFORMATION MAY NOT BE DISCLOSED EXCEPT WITH THE WRITTEN PERMISSION OF, AND IN A MANNER PERMITTED BY, THE PROPRIETORS CASTLET LIMITED.

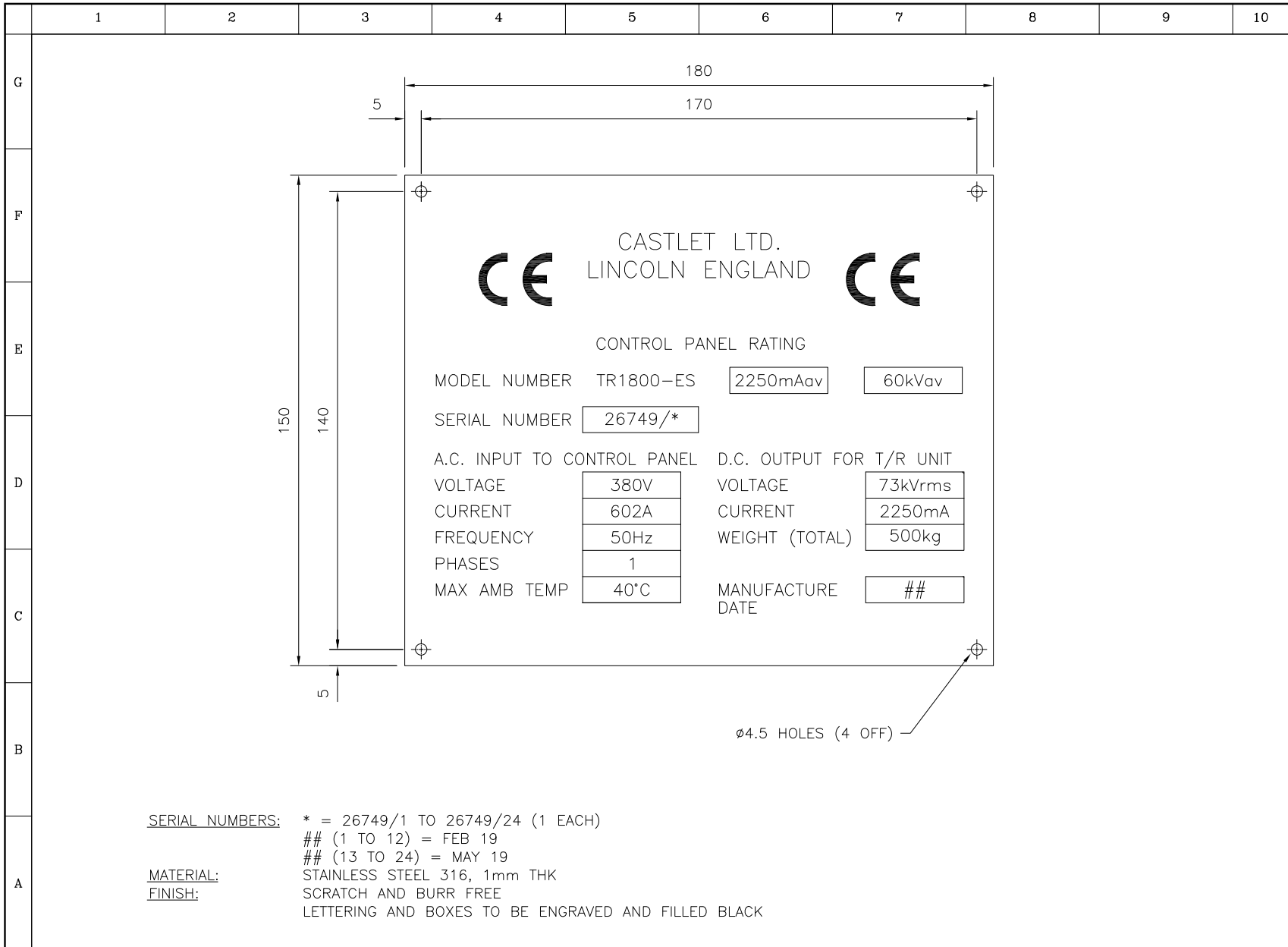
GENERAL DIMENSIONAL TOLERANCES
FABRICATION = +/- 3mm
SHEET METALWORK AND FIXINGS = +/- 1mm
MACHINING = +/- 0.5mm
ALL DIMENSIONS IN MILLIMETERS UNLESS OTHERWISE STATED

SCALE N.T.S.
WO NUMBER 26749

DRAWN A.J.M.
CHECKED C.J.W.

DATE 05.06.2018
DATE 06.06.2018

DRAWING NUMBER
A307561
SHEET 3 OF 6 SHEETS

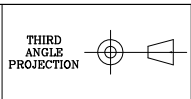


SERIAL NUMBERS: * = 26749/1 TO 26749/24 (1 EACH)
(1 TO 12) = FEB 19
(13 TO 24) = MAY 19

MATERIAL: STAINLESS STEEL 316, 1mm THK
FINISH: SCRATCH AND BURR FREE
LETTERING AND BOXES TO BE ENGRAVED AND FILLED BLACK

REVISION HISTORY			
ISSUE No.	AC NUMBER	APPROVED	DATE
14			
13			
12	AC414472		
11	AC414434	I.F.	04.06.19
10	AC414416	I.F.	15.05.19
9	AC414390	D.W.	25.04.19
8	AC414381	A.J.M.	07.03.19
7	AC414315	I.F.	03.01.19
6	AC414294	L.J.O.	06.12.18
5	AC414274	I.F.	21.11.18
4	AC414244	I.F.	18.10.18
3	AC414200	A.J.M.	23.08.18
2	AC414160	A.J.M.	05.07.18
1	INITIAL ISSUE	K.H.	06.06.18

TITLE CONTROL CUBICLE
GENERAL ARRANGEMENT
CONTENTS



THE INFORMATION CONTAINED IN THIS PUBLICATION IS CONFIDENTIAL AND IS PROTECTED BY COPYRIGHT. THE INFORMATION MAY NOT BE DISCLOSED EXCEPT WITH THE WRITTEN PERMISSION OF, AND IN A MANNER PERMITTED BY, THE PROPRIETORS CASTLET LIMITED.

GENERAL DIMENSIONAL TOLERANCES
FABRICATION = +/- 3mm
SHEET METALWORK
AND FIXINGS = +/- 1mm
MACHINING = +/- 0.5mm
ALL DIMENSIONS IN MILLIMETERS UNLESS OTHERWISE STATED

SCALE N.T.S.
WO NUMBER 26749

DRAWN A.J.M.
CHECKED C.J.W.

DATE 05.06.2018
DATE 06.06.2018

DRAWING NUMBER
A307561
SHEET 6 OF 6 SHEETS

CASTLET LIMITED - LINCOLN - ENGLAND