

NO. A-11612-1

# PUMP PERFORMANCE CURVES

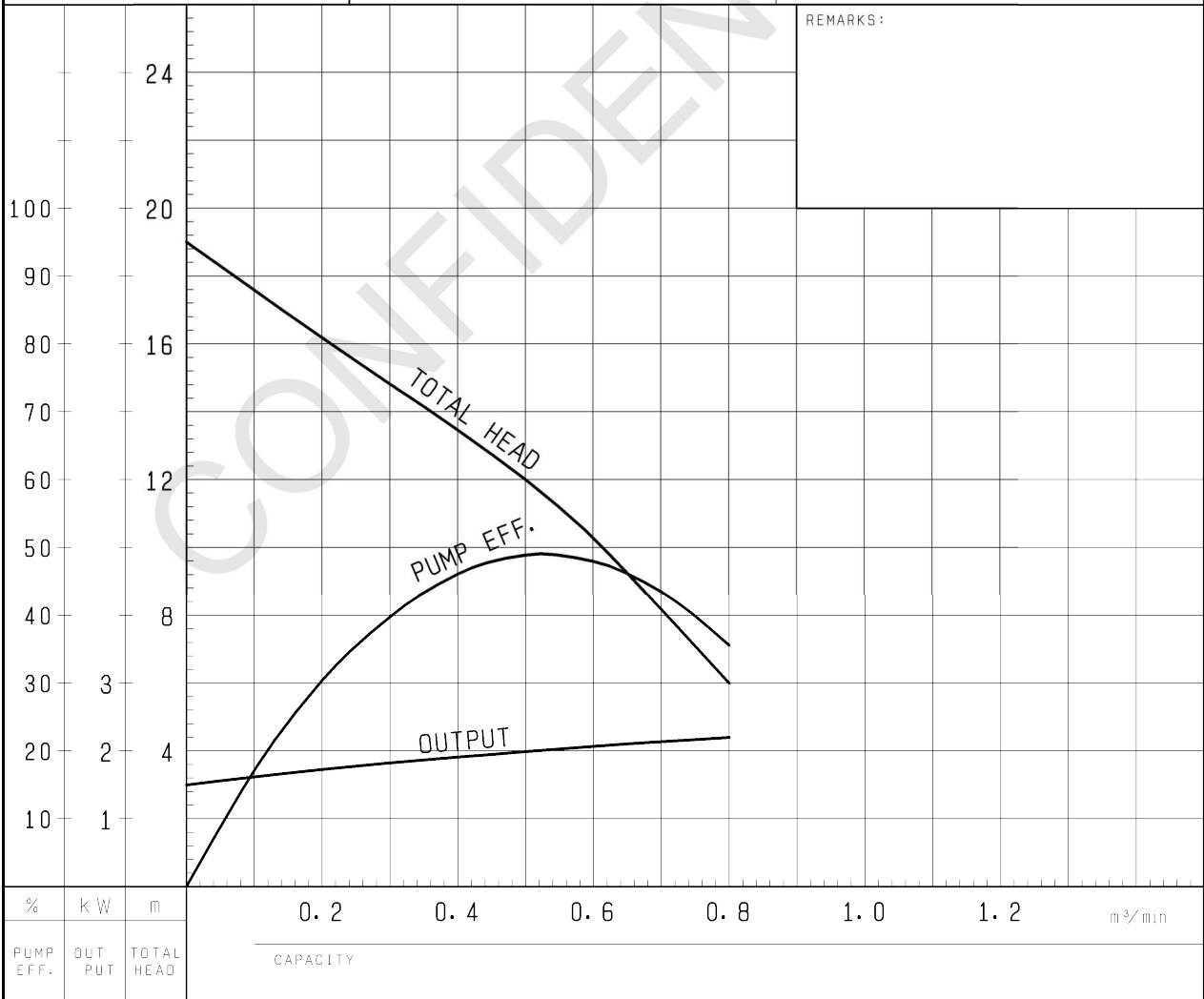
|                                           |                                                      |                    |
|-------------------------------------------|------------------------------------------------------|--------------------|
| TYPE<br>Sewage Submersible<br>Vortex Pump | MODEL<br>80U (A/W) 22.2 -52<br>TOS80U (A/W) 22.2 -52 | FREQUENCY<br>50 Hz |
|-------------------------------------------|------------------------------------------------------|--------------------|

CUSTOMER'S NAME \_\_\_\_\_

EQUIPMENT TITLE \_\_\_\_\_

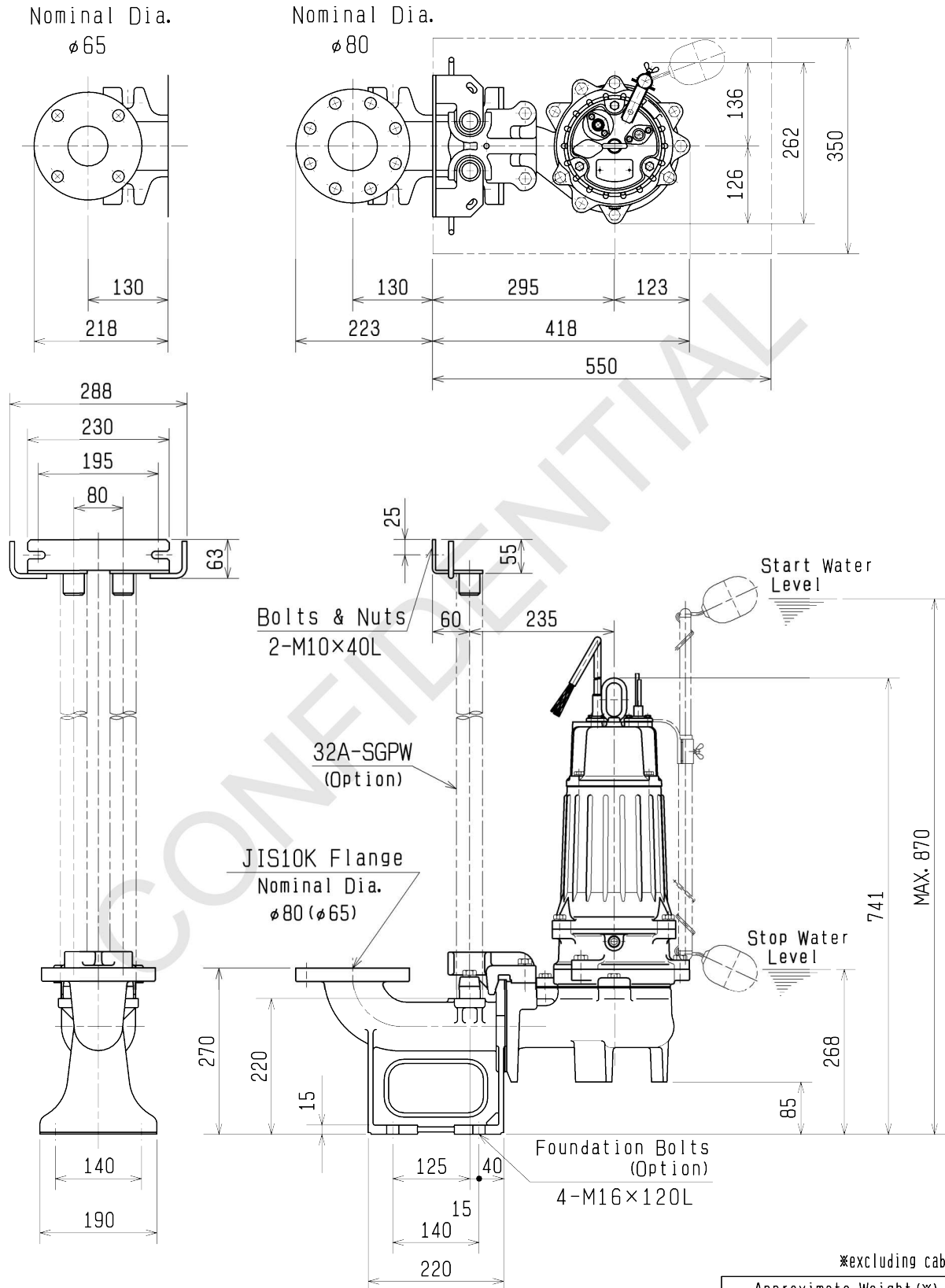
NO. \_\_\_\_\_

| STANDARD SPECIFICATIONS                                  | REQUIRED SPECIFICATIONS |
|----------------------------------------------------------|-------------------------|
| DISCHARGE BORE<br>80 mm                                  | mm                      |
| TOTAL HEAD<br>12 m                                       | m                       |
| CAPACITY<br>0.5 m <sup>3</sup> /min                      | m <sup>3</sup> /min     |
| MOTOR OUTPUT<br>2.2 kW                                   | kW                      |
| PHASE × VOLTAGE<br>3 ∅ × V                               | ∅ × V                   |
| CURRENT<br>A                                             | A                       |
| POLES / REVOLUTION<br>2 P / S. S. 3000 min <sup>-1</sup> | P / min <sup>-1</sup>   |
| STARTING METHOD<br>DIRECT ON LINE                        |                         |
| INSULATION CLASS<br>F                                    |                         |





|                                                 |  |       |                    |           |
|-------------------------------------------------|--|-------|--------------------|-----------|
| DIMENSION DRAWING                               |  | No.   | No.                | A-11639-2 |
| TYPE Sewage Submersible Vortex Pump (Automatic) |  | MODEL | TOS80UA22.2 -52/62 |           |



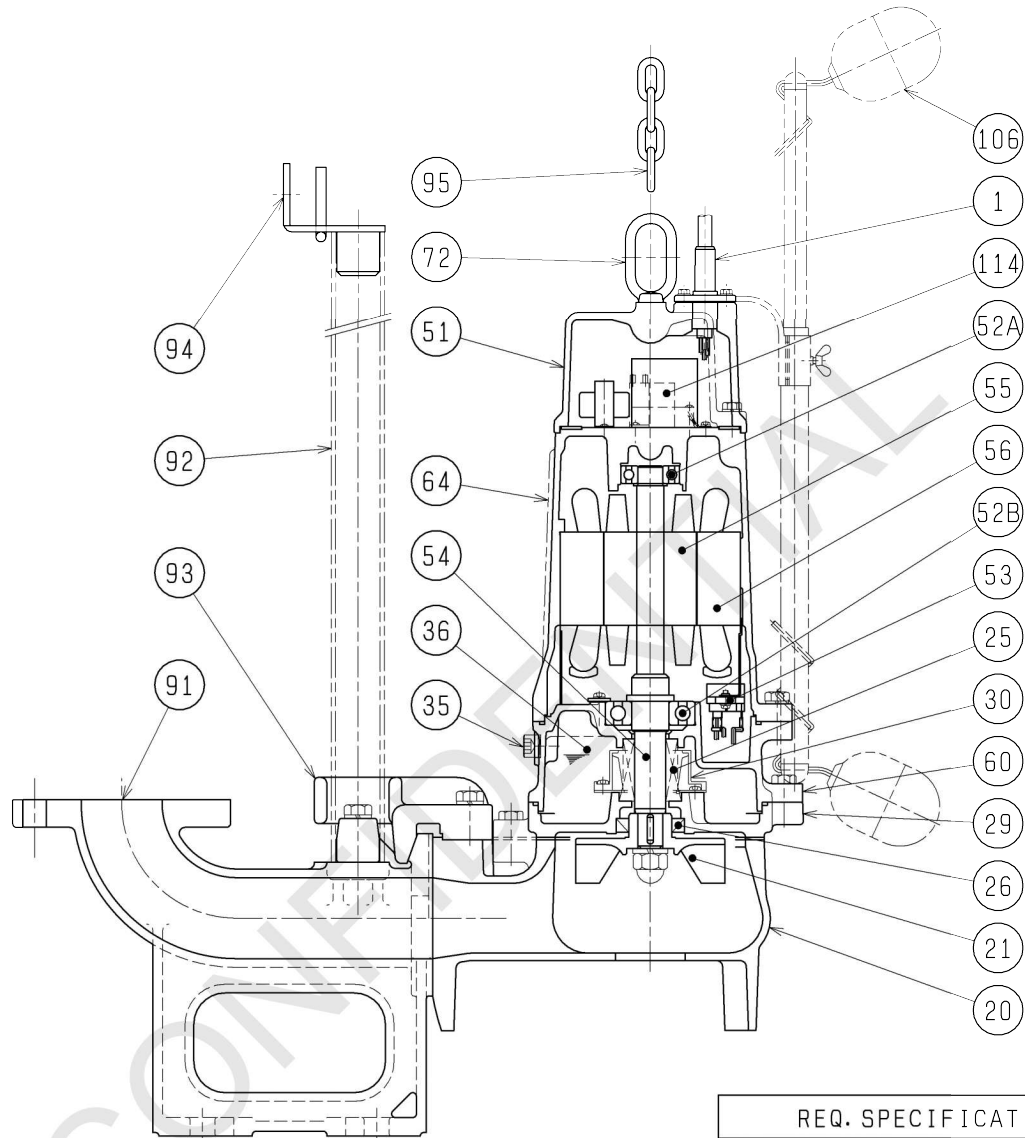
The Figure in ( ) shows the dimensions of discharge Bore at Nominal  $\phi 65$ .

※excluding cable

| Approximate Weight (※) |      |
|------------------------|------|
| Duckfoot Bend          | Pump |
| 19kg                   | 59kg |

Uncontrolled when printed or downloaded. Verify that this is the correct version before use. Reproduction of part or all the contents of the document is prohibited without written permission from PT. Bhumi Jepara Service.

|                          |                                               |       |                    |           |
|--------------------------|-----------------------------------------------|-------|--------------------|-----------|
| <b>SECTIONAL DRAWING</b> |                                               | No.   | No.                | A-11648-3 |
| TYPE                     | Sewage Submersible Vortex Pump<br>(Automatic) | MODEL | TOS80UA22.2 -52/62 |           |



| REQ. SPECIFICATION |  |  |
|--------------------|--|--|
|                    |  |  |
|                    |  |  |

※ the wetted part

| No. | DESCRIPTION     | QTY | MATERIAL / NOTE          | No. | DESCRIPTION     | QTY | MATERIAL / NOTE                |
|-----|-----------------|-----|--------------------------|-----|-----------------|-----|--------------------------------|
| 1   | Cabtyre Cable   | 1   | PVC Sheath               | 55  | Rotor           | 1   |                                |
| 20  | Pump Casing     | 1   | Gray Iron Casting        | 56  | Stator          | 1   |                                |
| 21  | Impeller        | 1   | Gray Iron Casting        | 60  | Bearing Housing | 1   | Gray Iron Casting              |
| 25  | Mechanical Seal | 1   | H-25A                    | 64  | Motor Frame     | 1   | Gray Iron Casting              |
| 26  | Oil Seal        | 1   | TC355511                 | 72  | Eye Bolt        | 1   | Stainless Steel 304            |
| 29  | Oil Casing      | 1   | Gray Iron Casting        | 91  | Duck Foot Bend  | 1   | Gray Iron Casting              |
| 30  | Oil Lifter      | 1   | Plastic                  | 92  | Guide Pipe      | 2   | Galvanized Steel Pipe (Option) |
| 35  | Oil Plug        | 1   | Stainless Steel 304      | 93  | Guide Hook      | 1   | Ductile Iron Casting           |
| 36  | Lubricant       |     | Turbine Oil (ISO VG32)   | 94  | Guide Support   | 1   | Stainless Steel 304            |
| 51  | Head Cover      | 1   | Gray Iron Casting        | 95  | Chain           | 1   | Structure Steel, 5m            |
| 52A | Upper Bearing   | 1   | 6204ZCC3                 | 106 | Float           | 2   | Plastic                        |
| 52B | Lower Bearing   | 1   | 6306ZCC3                 | 114 | Relay Unit      | 1   |                                |
| 53  | Motor Protector | 1   |                          |     |                 |     |                                |
| 54  | Shaft           | 1   | Stainless Steel 420J2(※) |     |                 |     |                                |