

NO. A-13191-1

PUMP PERFORMANCE CURVES

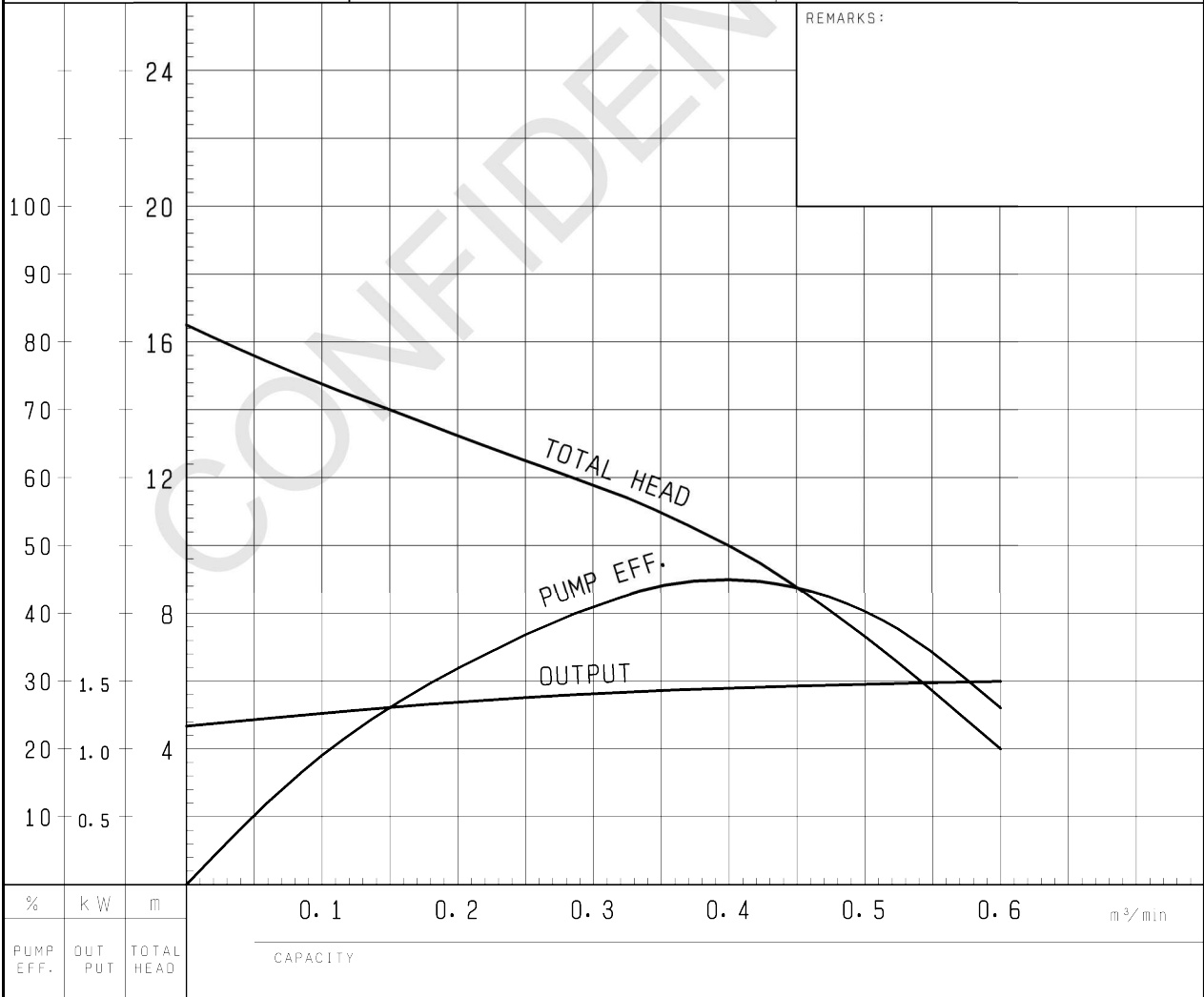
TYPE	Sewage Submersible Vortex Pump	MODEL	80U (A/W) 21.5 -52 TOS80U (A/W) 21.5 -52	FREQUENCY	50 Hz
------	-----------------------------------	-------	---	-----------	-------

CUSTOMER'S NAME _____

EQUIPMENT TITLE _____

NO. _____

	STANDARD SPECIFICATIONS	REQUIRED SPECIFICATIONS
DISCHARGE BORE	80 mm	mm
TOTAL HEAD	10 m	m
CAPACITY	0.4 m ³ /min	m ³ /min
MOTOR OUTPUT	1.5 kW	kW
PHASE × VOLTAGE	3 ∅ × V	∅ × V
CURRENT	A	A
POLES / REVOLUTION	2 P / S. S. 3000 min ⁻¹	P / min ⁻¹
STARTING METHOD	DIRECT ON LINE	
INSULATION CLASS	F	

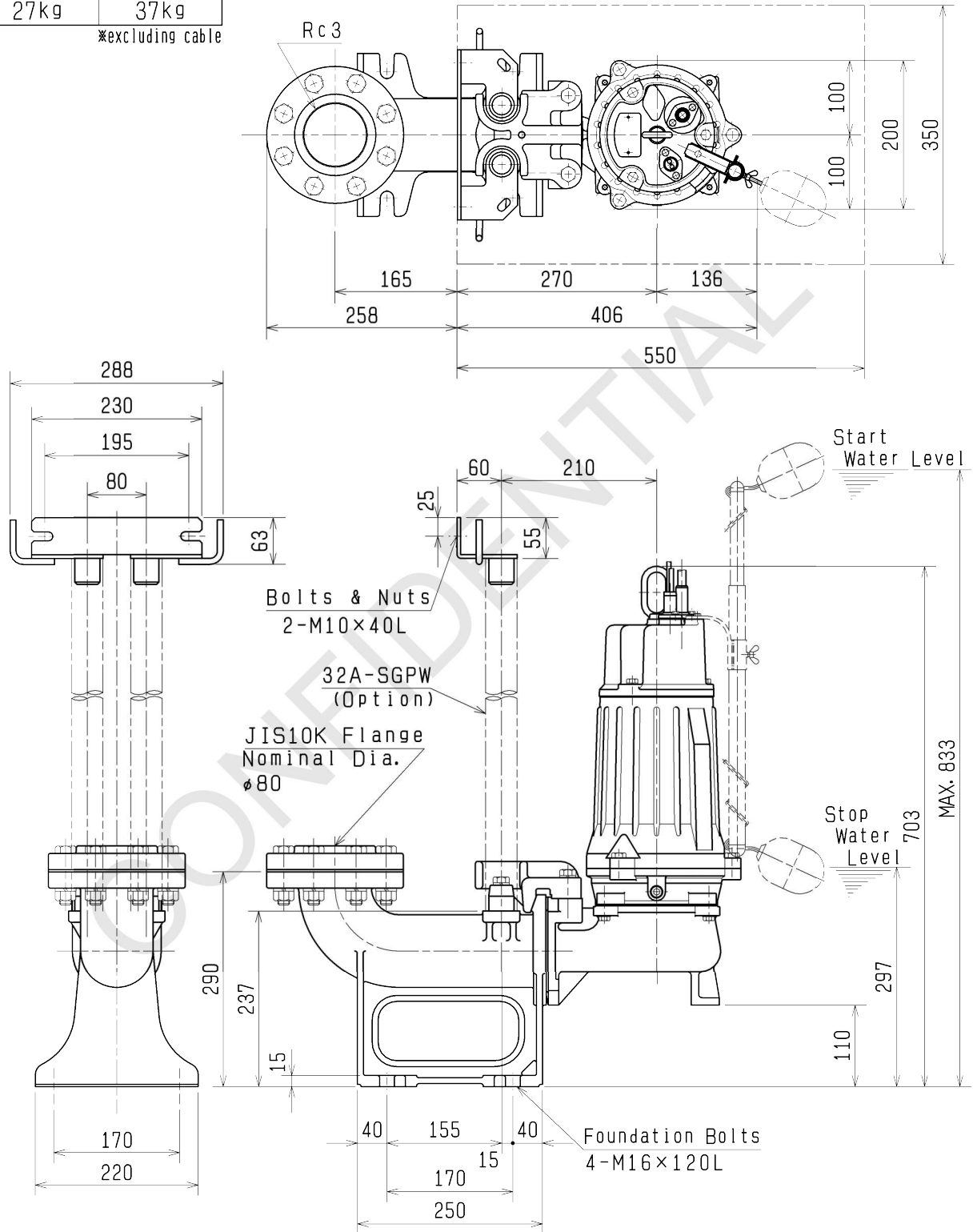




DIMENSION DRAWING		No.	No.	A-13200-3
TYPE Sewage Submersible Vortex Pump (Automatic)		MODEL	TOS80UA21.5 -52/62	

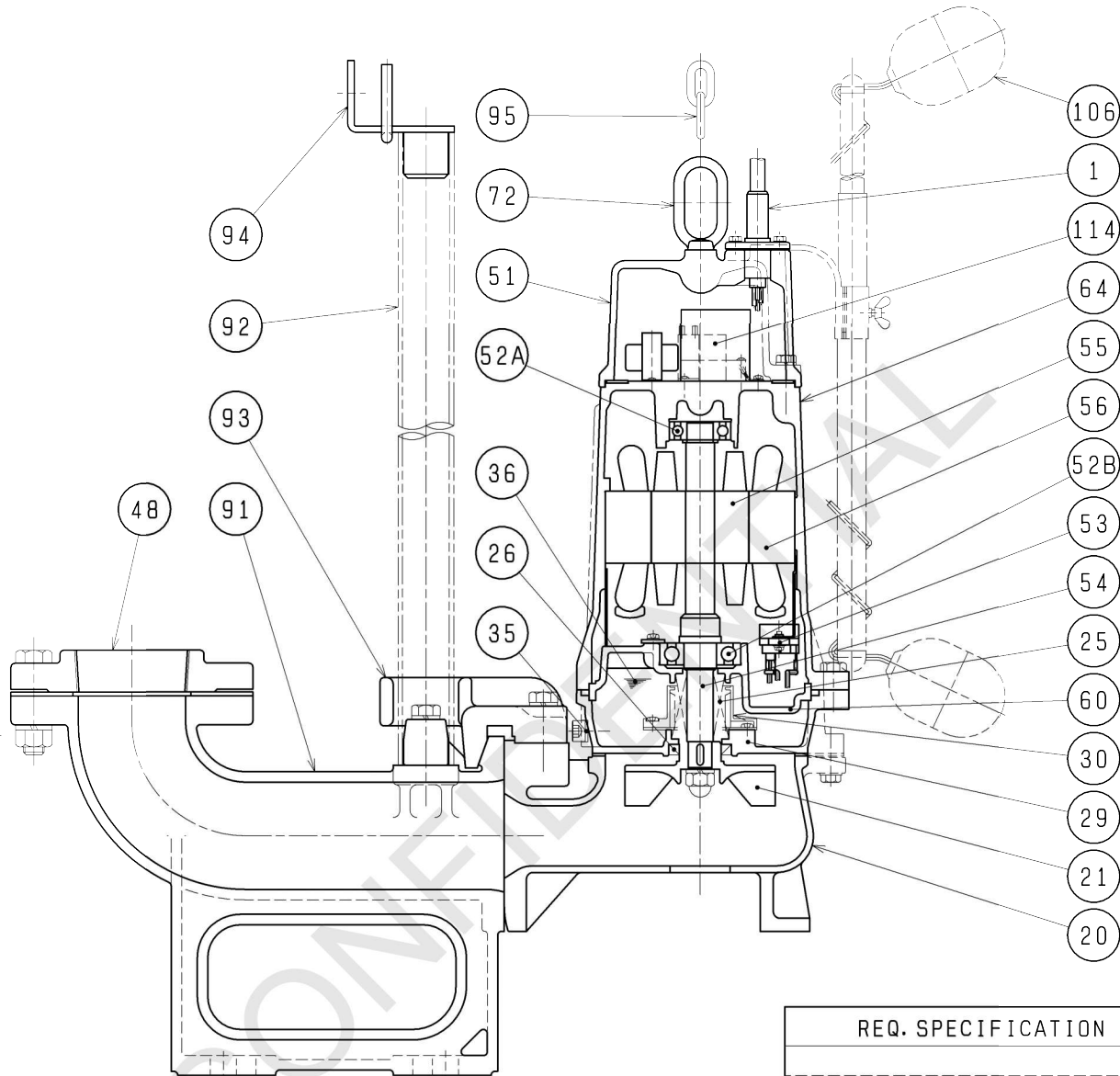
Approximate Weight (※)	
Duckfoot Bend	Pump
27kg	37kg

※excluding cable





SECTIONAL DRAWING		No.	No.	A-13203-4
TYPE Sewage Submersible Vortex Pump (Automatic)		MODEL	TOS80UA21.5 -52/62	



REQ. SPECIFICATION		

※ the wetted part

No.	DESCRIPTION	QTY	MATERIAL / NOTE	No.	DESCRIPTION	QTY	MATERIAL / NOTE
1	Cable	1	PVC Sheath	55	Rotor	1	
20	Pump Casing	1	Gray Iron Casting	56	Stator	1	
21	Impeller	1	Gray Iron Casting	60	Bearing Housing	1	Gray Iron Casting
25	Mechanical Seal	1	H-20A	64	Motor Frame	1	Gray Iron Casting
26	Oil Seal	1	TC32488	72	Eye Bolt	1	Stainless Steel 304
29	Oil Casing	1	Gray Iron Casting	91	Duck Foot Bend	1	Gray Iron Casting
30	Oil Lifter	1	Plastic	92	Guide Pipe	2	Galvanized Steel Pipe (Option)
35	Oil Plug	1	Stainless Steel 304	93	Guide Hook	1	Ductile Iron Casting
36	Lubricant		Turbine Oil (ISO VG32)	94	Guide Support	1	Stainless Steel 304
48	Screwed Flange	1	Gray Iron Casting	95	Chain	1	Structure Steel, 5m
51	Head Cover	1	Gray Iron Casting	106	Float	2	ABS Plastic
52A	Upper Bearing	1	6204ZCC3	114	Relay Unit	1	
52B	Lower Bearing	1	6305ZCC3				
53	Motor Protector	1					
54	Shaft	1	Stainless Steel 420J2(※)				