

NO. A-11608-1

PUMP PERFORMANCE CURVES

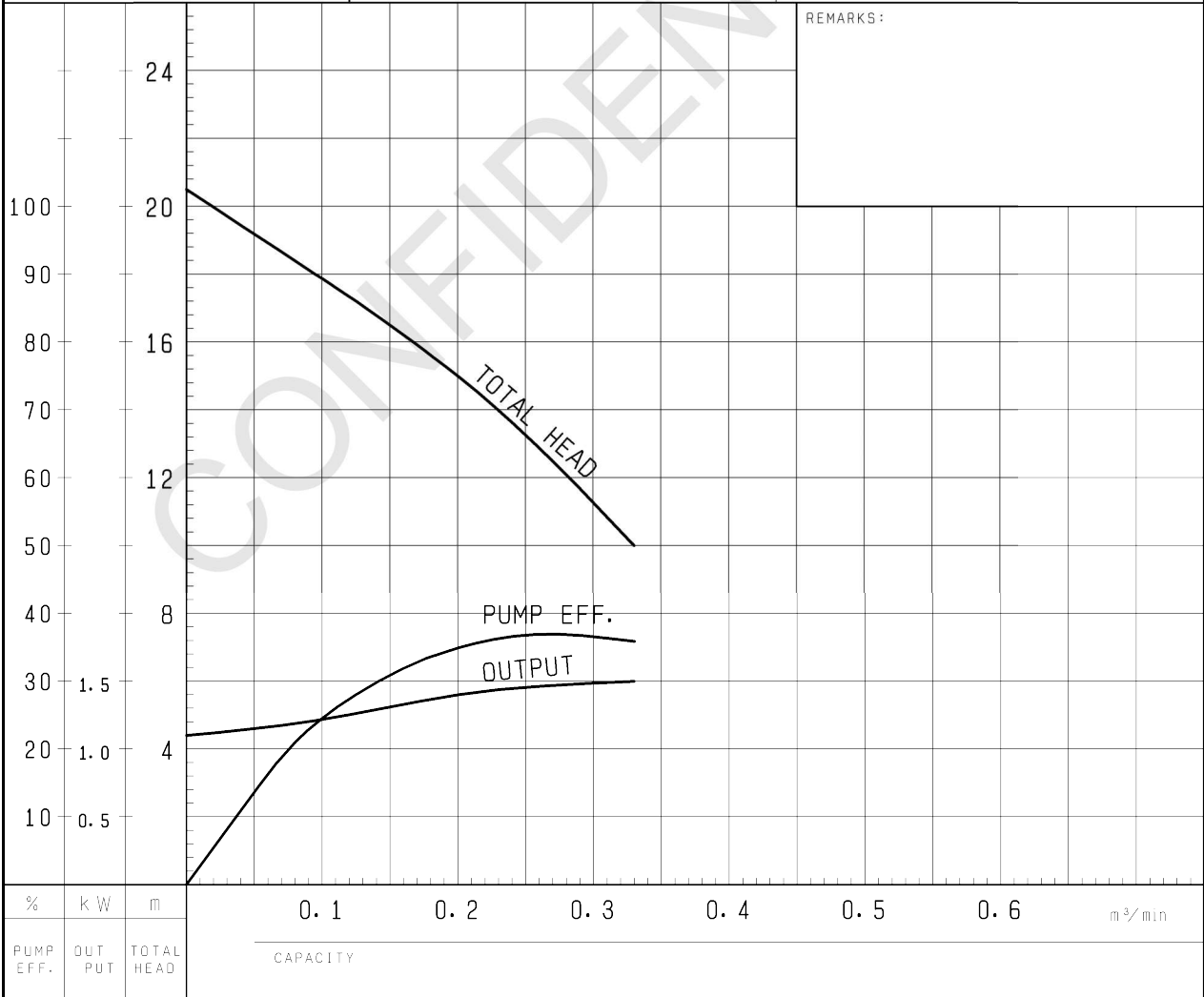
TYPE Sewage Submersible Vortex Pump	MODEL 50U (A/W) 21.5 -52 TOS50U (A/W) 21.5 -52	FREQUENCY 50 Hz
-------------------------------------	---	-----------------

CUSTOMER'S NAME _____

EQUIPMENT TITLE _____

NO. _____

STANDARD SPECIFICATIONS	REQUIRED SPECIFICATIONS
DISCHARGE BORE 50 mm	mm
TOTAL HEAD 15 m	m
CAPACITY 0.2 m ³ /min	m ³ /min
MOTOR OUTPUT 1.5 kW	kW
PHASE x VOLTAGE 3 ϕ x V	ϕ x V
CURRENT A	A
POLES / REVOLUTION 2 P / S. S. 3000 min ⁻¹	P / min ⁻¹
STARTING METHOD DIRECT ON LINE	
INSULATION CLASS F	

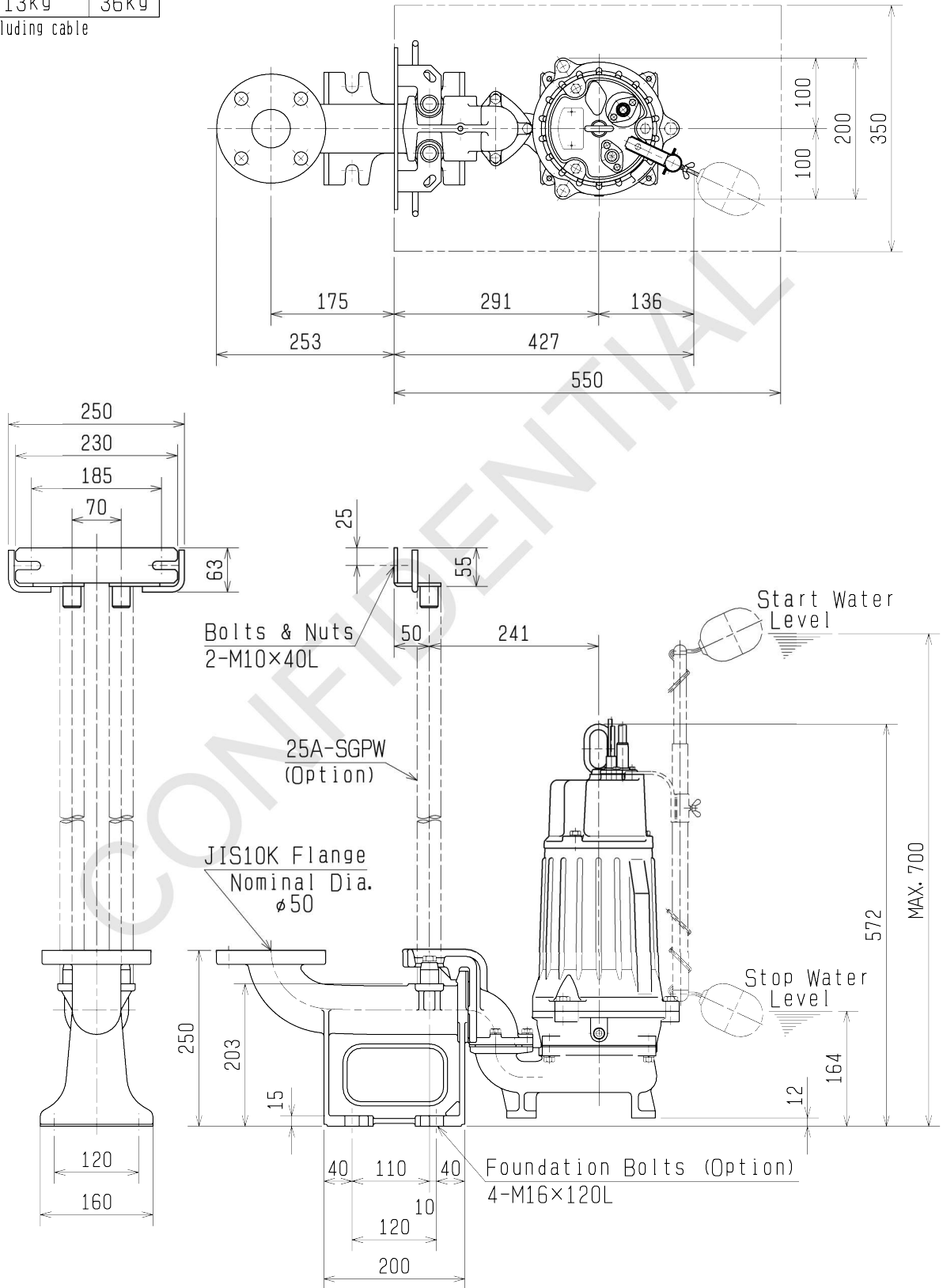




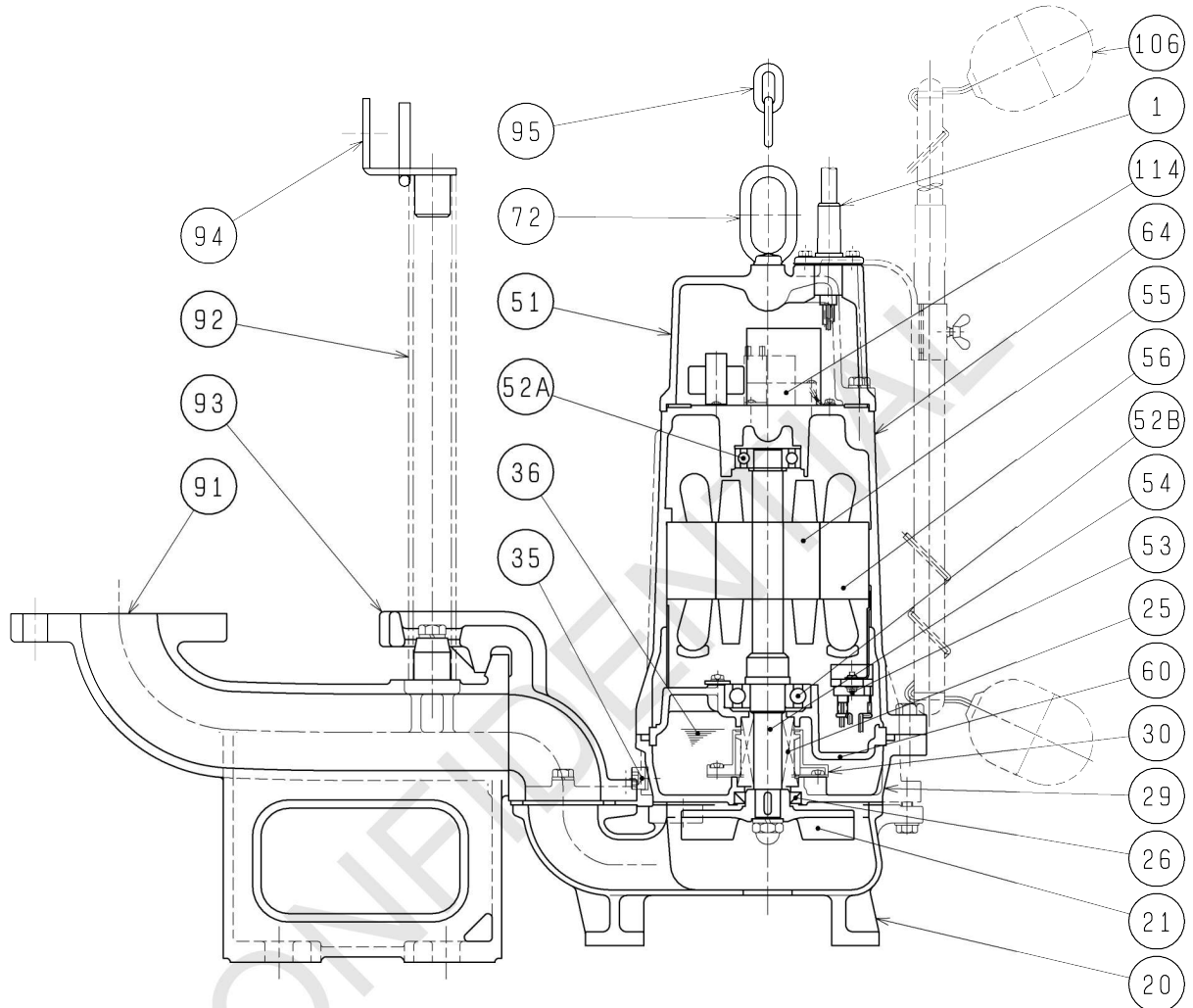
DIMENSION DRAWING		No.	No.	A-11633-2
TYPE	Sewage Submersible Vortex Pump (Automatic)	MODEL	TOS50UA21.5 -52/62	

Approximate Weight(※)	
Duckfoot Bend	Pump
13kg	36kg

※excluding cable



SECTIONAL DRAWING		No.	No.	A-11642-3
TYPE	Sewage Submersible Vortex Pump (Automatic)	MODEL	TOS50UA21.5 -52/62	



REQ. SPECIFICATION		

※ the wetted part

No.	DESCRIPTION	QTY	MATERIAL / NOTE	No.	DESCRIPTION	QTY	MATERIAL / NOTE
1	Cabtyre Cable	1	PVC Sheath	55	Rotor	1	
20	Pump Casing	1	Gray Iron Casting	56	Stator	1	
21	Impeller	1	Gray Iron Casting	60	Bearing Housing	1	Gray Iron Casting
25	Mechanical Seal	1	H-20A	64	Motor Frame	1	Gray Iron Casting
26	Oil Seal	1	TC32488	72	Eye Bolt	1	Stainless Steel 304
29	Oil Casing	1	Gray Iron Casting	91	Duck Foot Bend	1	Gray Iron Casting
30	Oil Lifter	1	Plastic	92	Guide Pipe	2	Galvanized Steel Pipe (Option)
35	Oil Plug	1	Stainless Steel 304	93	Guide Hook	1	Gray Iron Casting
36	Lubricant		Turbine Oil (ISO VG32)	94	Guide Support	1	Stainless Steel 304
51	Head Cover	1	Gray Iron Casting	95	Chain	1	Structure Steel, 5m
52A	Upper Bearing	1	6204ZCC3	106	Float	2	ABS Plastic
52B	Lower Bearing	1	6305ZCC3	114	Relay Unit	1	
53	Motor Protector	1					
54	Shaft	1	Stainless Steel 420J2(※)				