

SECTION 6

Motor Information for Slurry Pump A/B

00GNB21AP101

00GNB22AP101



BOUSTEAD SALCON WATER SOLUTIONS PTE LTD

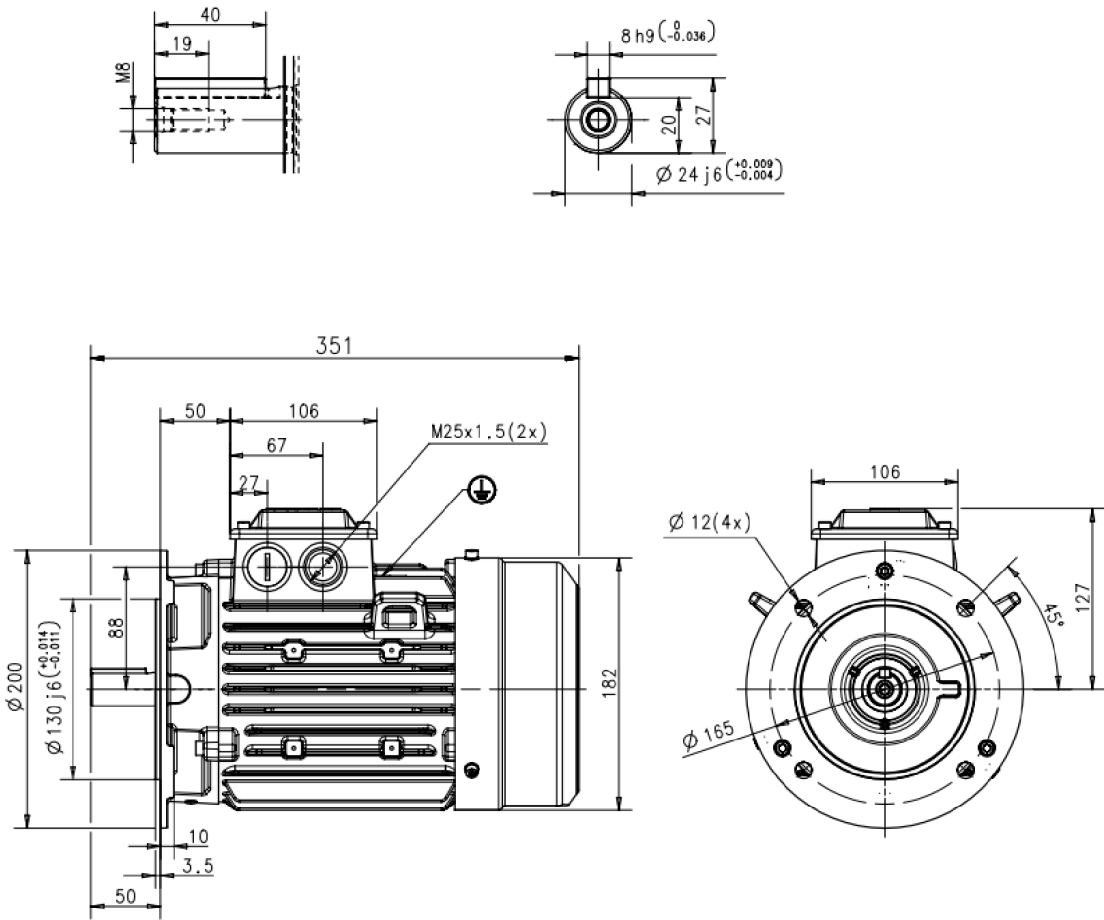
Motor Data sheets

1. Name of motor	-	SLURRY PUMP MOTOR
2. Manufacturer	-	ABB
3. Country of origin	-	China
4. Type/machine code	-	M2BAX 90LA 4
5. Applied standard (characteristics)	-	IEC 60034-1
6. Ratings		
(1) Rated output	kW	1.5
(2) Service factor	-	1
(3) Number of pole	-	4
(4) Rated speed	min ⁻¹	1444
(5) Rated voltage	V	380
(6) Number of phases	-	3
(7) Rated frequency	Hz	50
(8) Insulation class	-	F
(9) Temperature rise	-	B
(10) Rated duty	-	S1
7. Service Conditions		
(1) Starting method	-	DOL
(2) Direction of rotation (viewed from DE)	-	CCW
(3) Reverse rotation (Yes / No)	-	NO
(4) Location (Indoor / Outdoor)	-	OUTDOOR
(5) Enclosure IP rating		IP55
(a) Motor frame	-	IP55
(b) Terminal boxes	-	IP55
(6) Installation (Horizontal / Vertical)	-	Horizontal
(7) Design ambient temperature	°C	40
(8) Explosion proof (Required / Not required)	-	Not Required
(9) Noise level (at full-load condition)	dB (A)	55
8. Characteristics		
(1) Current		
(a) Normal current	A	3.78
(b) No-load current	A	
(c) Starting current	A	<650% Rated Current

(2) Torque		
(a) Starting torque	%	370
(b) Maximum torque	%	419
(3) Slip at rated output		
(4) Efficiencies		
(a) At 100% load	%	82.76
(b) At 75% load	%	83.06
(c) At 50% load	%	81.29
(d) At 25% load	%	
(5) Power factor		
(a) At rated load	%	0.73
(b) At starting load	%	
(6) GD2 coupled with driven equipment	kg-m ²	
(7) Starting time with driven equipment	s	<5
(8) Consecutive number of starts		
(a) From cold condition per hour	-	3
(b) From hot condition per hour	-	2
(c) Minimum time between 2 starts (running state)	min	
(d) Minimum time between 2 starts (stop state)	min	
(9) Allowable locked-rotor time		
(a) At cold condition	s	
(b) At hot condition	s	
9. Constructions		
(1) Stator winding connection (Wye / Delta)	-	DELTA
(2) Type of bearing (DE / NDE)	-	62052Z/C3 62042Z/C3
(3) Lubricants		PERMANENT GREASE
(a) Recommended lubricant and brand name	-	NA
(b) Pouring method	-	NA
(c) Quantity of lubricant for initial filling	-	NA
(d) Recommended interval for recharging	-	NA
(e) Recharging quantity	-	NA
(f) Location of pouring	-	NA
(indicated in the outline drawing)		
(4) Bearing cooling water requirement (if required)		NOT REQUIRED
(a) Quantity	m ³ /h	
(b) Inlet water temperature	°C	
(c) Required cooling water pressure	kPa	
(d) Type of cooling water	-	

(5) Water to air heat exchanger (if applied)	m ³ /h	NOT APPLIED
(a) Quantity of cooling water	°C	
(b) Inlet water temperature	kPa	
(c) Required cooling water pressure	-	
(d) Type of cooling water	W	
(6) Space heater (AC 220V 1 phase)	kg	NOT APPLICABLE
(7) Weight		24
10. Attached document numbers		SEE PAGE 46 TO 47
(1) Motor outline drawing	-	
(2) Terminal box drawings		
(a) For main power	-	
(b) For instruments	-	
(c) For space heater	-	
(3) Current transformers (for MV motors only)		
(a) Characteristics curves	-	
(b) Outline drawing	-	
(4) Efficiency curves	-	
(5) Thermal capability curves		
(a) At cold condition	-	
(b) At hot condition	-	
(6) Starting and speed torque characteristics at 80%, 90% and 100% voltage	-	

10.1 MOTOR OUTLINE DRAWING



Additional information:

Dimension Print	Motor Type: M2BAX 90L_2-6 B5, V1, V3	Document No: 3GZC500009-28 C 13 BA 90 A
	Description: STANDARD SQUIRREL CAGE MOTOR	
Unit: ABB Motors and Generators	Issued by: Bin Zou	Replaces:
Date: 2015-08-06	Approved by: Anna Feng	Replaced by:
ABB Ltd.	Customer Reference:	ABB

10.6 MOTOR SPEED TORQUE CHARACTERISTIC

ABB Ltd Motors & Generators		Classifying code or document type PERFORMANCE DATA OF MOTOR			ABB
Department/Author	Date of issue	Lang.	Rev. date	Our ref.	
pom	5/30/2018	En		M2BAX 90L4A	
Customer ref.	Saving Ident		Rev./Changed by	Pages	
Zn1=46			A	2/2	

Motor type code: M2BAX 090LA 4C

Rated output	1.5 kW	Power Factor	0.80
Voltage	380 V	Rated torque	10 Nm
Frequency	50 Hz	Relat. starting current	6.5
Speed	1416 rpm	Relat. starting torque	2.80
Current	3.4 A	Relat. maximum torque	3.4

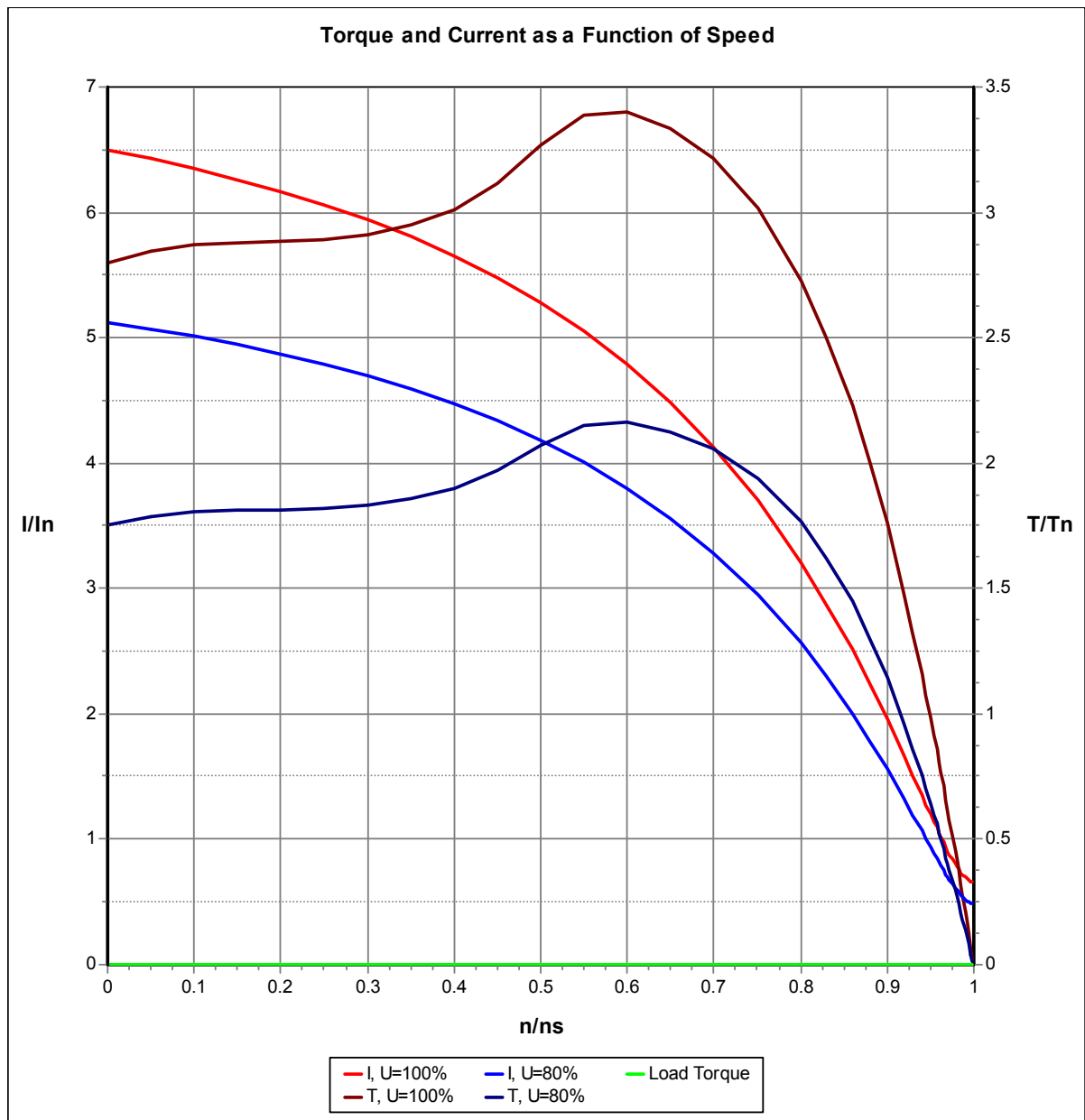


ABB Ltd

Motors & Generators Visiting Address
NO.88 Tianning Road
Shanghai
China

Postal Address
200245
Shanghai
China

Telephone

Telefax