

SECTION 18

Motor Information for Acid Unloading Pump

00GNB71AP101



BOUSTEAD SALCON WATER SOLUTIONS PTE LTD

Motor Data sheets

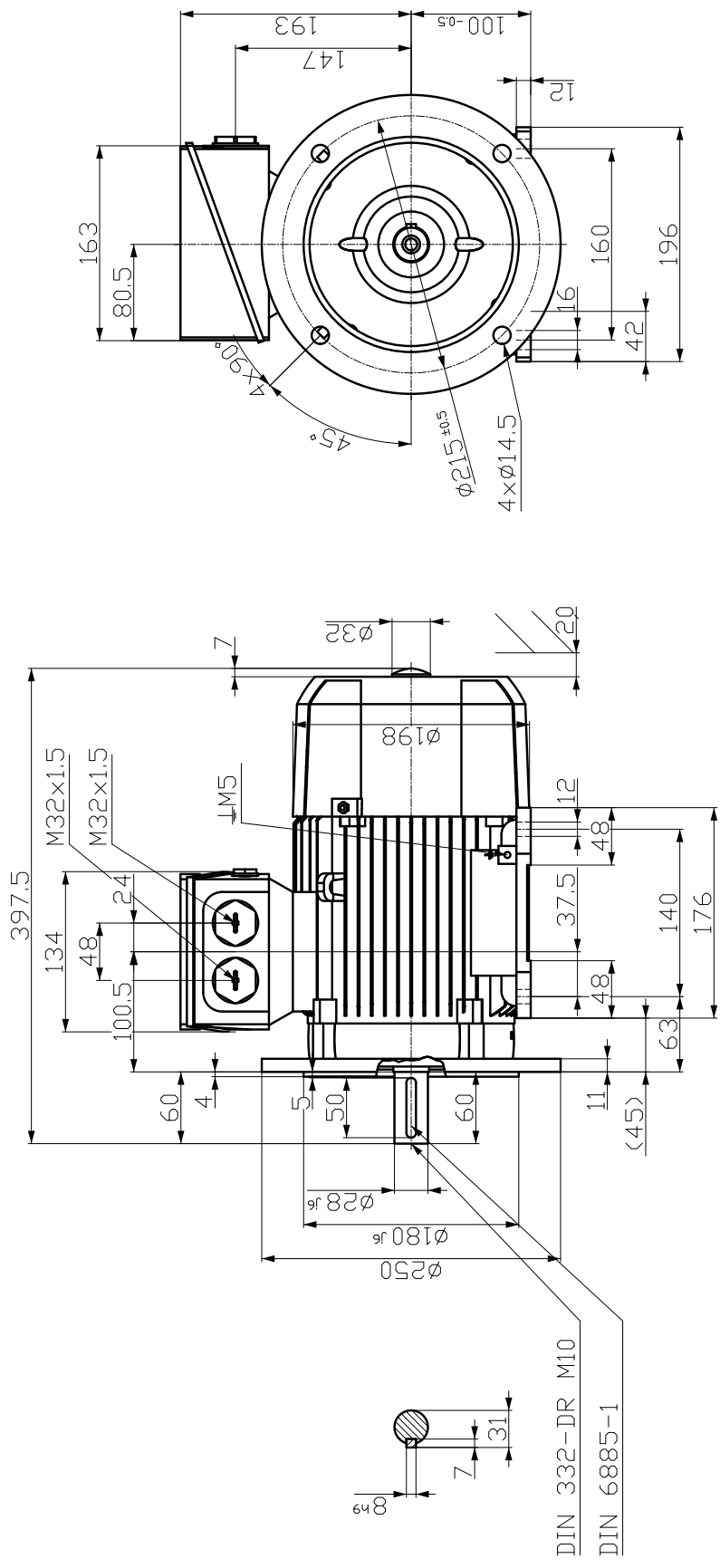
1. Name of motor	-	ACID UNLOADING PUMP MOTOR
2. Manufacturer	-	SIEMENS
3. Country of origin	-	EUROPE
4. Type/machine code	-	SQUIRREL CAGE INDUCTION
5. Applied standard (characteristics)	-	IEC 60034-1
6. Ratings		
(1) Rated output	kW	3
(2) Service factor	-	1
(3) Number of pole	-	2
(4) Rated speed	min ⁻¹	2920
(5) Rated voltage	V	380
(6) Number of phases	-	3
(7) Rated frequency	Hz	50
(8) Insulation class	-	F
(9) Temperature rise	-	B
(10) Rated duty	-	S1
7. Service Conditions		
(1) Starting method	-	DOL
(2) Direction of rotation (viewed from DE)	-	CW
(3) Reverse rotation (Yes / No)	-	NO
(4) Location (Indoor / Outdoor)	-	OUTDOOR
(5) Enclosure IP rating		
(a) Motor frame	-	IP55
(b) Terminal boxes	-	IP55
(6) Installation (Horizontal / Vertical)	-	HORIZONTAL
(7) Design ambient temperature	°C	-20 to 40
(8) Explosion proof (Required / Not required)	-	NOT REQUIRED
(9) Noise level (at full-load condition)	dB (A)	67
8. Characteristics		
(1) Current		
(a) Normal current	A	6
(b) No-load current	A	
(c) Starting current	A	<650% rated current

(2) Torque		
(a) Starting torque	%	280
(b) Maximum torque	%	430
(3) Slip at rated output		
(4) Efficiencies		
(a) At 100% load	%	87.1
(b) At 75% load	%	88.0
(c) At 50% load	%	87.5
(d) At 25% load	%	-
(5) Power factor		
(a) At rated load	%	88
(b) At starting load	%	
(6) GD2 coupled with driven equipment	kg-m ²	0.0054
(7) Starting time with driven equipment	s	< 5
(8) Consecutive number of starts		
(a) From cold condition per hour	-	3
(b) From hot condition per hour	-	2
(c) Minimum time between 2 starts (running state)	min	
(d) Minimum time between 2 starts (stop state)	min	
(9) Allowable locked-rotor time		
(a) At cold condition	s	
(b) At hot condition	s	
9. Constructions		
(1) Stator winding connection (Wye / Delta)	-	DELTA
(2) Type of bearing (DE / NDE)	-	6206 2Z C3 / 6206 2Z C3
(3) Lubricants		
(a) Recommended lubricant and brand name	-	ESSO UNIREX N3
(b) Pouring method	-	GREASE GUN
(c) Quantity of lubricant for initial filling	-	
(d) Recommended interval for recharging	-	8000 HOURS
(e) Recharging quantity	-	
(f) Location of pouring	-	
(indicated in the outline drawing)		
(4) Bearing cooling water requirement (if required)		NOT REQUIRED
(a) Quantity	m ³ /h	-
(b) Inlet water temperature	°C	-
(c) Required cooling water pressure	kPa	-
(d) Type of cooling water	-	-

(5) Water to air heat exchanger (if applied)	m ³ /h	NOT APPLIED
(a) Quantity of cooling water	°C	-
(b) Inlet water temperature	kPa	-
(c) Required cooling water pressure	-	-
(d) Type of cooling water	-	-
(6) Space heater (AC 220V 1 phase)	W	NOT APPLICABLE
(7) Weight	kg	36
10. Attached document numbers		
(1) Motor outline drawing	-	SEE PAGE 109
(2) Terminal box drawings		
(a) For main power	-	
(b) For instruments	-	
(c) For space heater	-	
(3) Current transformers (for MV motors only)		
(a) Characteristics curves	-	
(b) Outline drawing	-	
(4) Efficiency curves	-	
(5) Thermal capability curves		
(a) At cold condition	-	
(b) At hot condition	-	
(6) Starting and speed torque characteristics at 80%, 90% and 100% voltage	-	

10.1 MOTOR OUTLINE DRAWING

Copyright © Siemens AG 2016. All rights reserved. Siemens is a registered trademark of Siemens AG. Siemens reserves all rights in this document. Siemens is not responsible for any damage or loss of data resulting from the use of this document. Siemens is not responsible for any damage or loss of data resulting from the use of this document. Siemens is not responsible for any damage or loss of data resulting from the use of this document.



Reference	Surface	Material	Weight	Scale
1LE1501-1AA49-QJA4-Z B02+B83+H04+H07+H70+M1Y+Q02+ S01	Author Designer Approval Department	DTK	-	mm
SIEMENS	Change Order	WFB	Doc. Type	/
	Doc. Title	10/25/17	Item No.	Paper Size A3
	Revision	RS	Doc. No.	1st Language en 2nd Language de
© Siemens AG 2016	Project No.	-	Ref. No.	-
	6	7	8	1 of 1