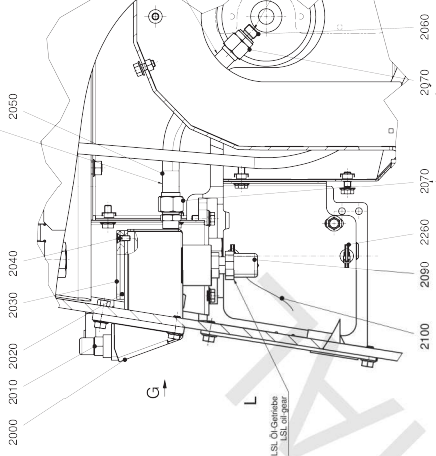


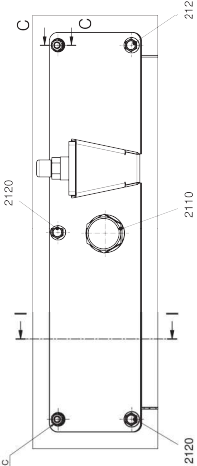
Keine Schraubverbindungen verwenden (Don't use screws)

J 1:2

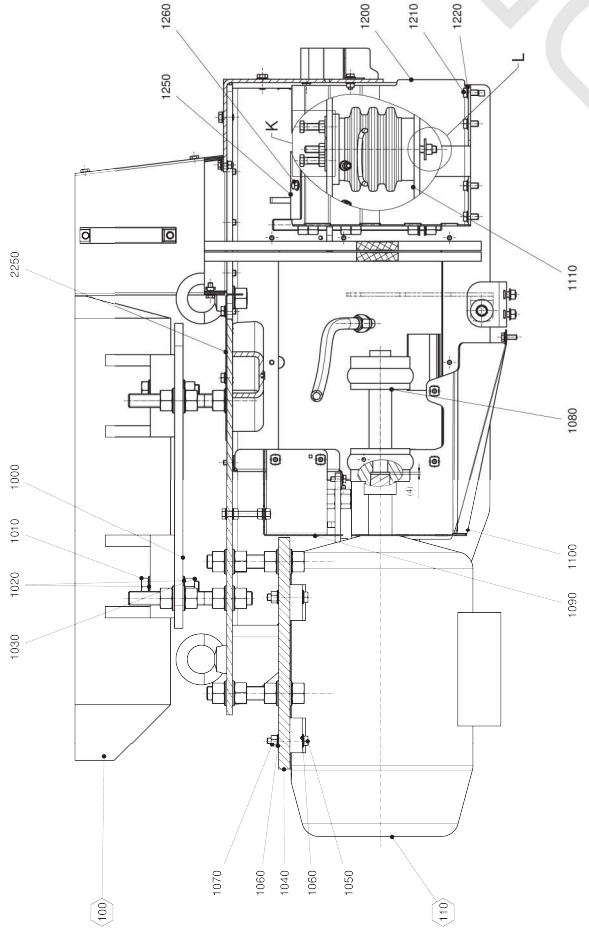


mit Maßstab 1:2
die Position mit Originalzeichnung
vorher abgleichen mit No. 3090
the position with the original drawing
before assembling with No. 3090

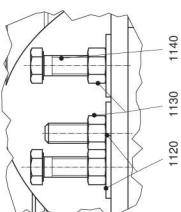
G 1:2



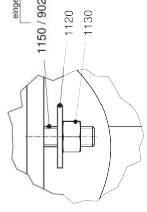
F-F 1:3



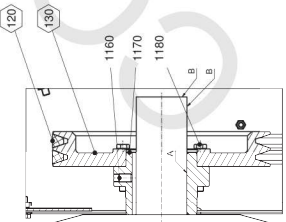
K 1:1



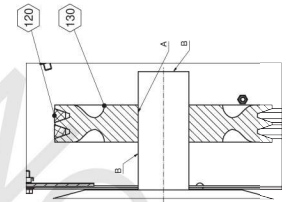
L 1:1



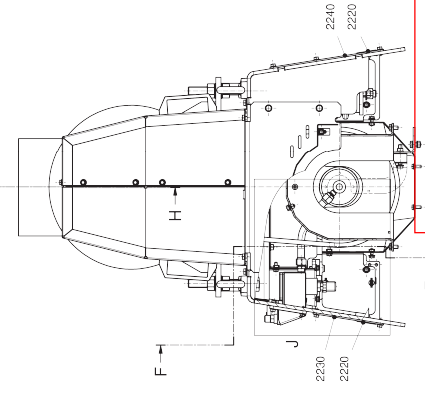
H-H 1:2



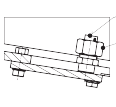
H-H 1:2



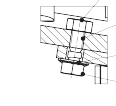
H 1:2



I-I 1:2



C-C 1:1



A. per Pos. 9020 montiert
with Pos. 9020 assembled
B. per Pos. 9020 montiert
with Pos. 9020 assembled
C. per Pos. 9020 montiert
with Pos. 9020 assembled
D. per Pos. 9020 montiert
with Pos. 9020 assembled
E. per Pos. 9020 montiert
with Pos. 9020 assembled
F. per Pos. 9020 montiert
with Pos. 9020 assembled
G. per Pos. 9020 montiert
with Pos. 9020 assembled
H. per Pos. 9020 montiert
with Pos. 9020 assembled
I. per Pos. 9020 montiert
with Pos. 9020 assembled
J. per Pos. 9020 montiert
with Pos. 9020 assembled
K. per Pos. 9020 montiert
with Pos. 9020 assembled
L. per Pos. 9020 montiert
with Pos. 9020 assembled
M. per Pos. 9020 montiert
with Pos. 9020 assembled
N. per Pos. 9020 montiert
with Pos. 9020 assembled
O. per Pos. 9020 montiert
with Pos. 9020 assembled
P. per Pos. 9020 montiert
with Pos. 9020 assembled
Q. per Pos. 9020 montiert
with Pos. 9020 assembled
R. per Pos. 9020 montiert
with Pos. 9020 assembled

Pos. No.	Bezeichnung	Material	Abmessung	Material
1000-1990	Baugruppe: Achtring see main drawing	Stahl	Ø 100	Ø 100
2000-2990	Stützflansch see main drawing	Stahl	Ø 200	Ø 200
3000-3990	Stützflansch see main drawing	Stahl	Ø 300	Ø 300
4000-4990	Stützflansch see main drawing	Stahl	Ø 400	Ø 400
5000-5990	Stützflansch see main drawing	Stahl	Ø 500	Ø 500
6000-6990	Stützflansch see main drawing	Stahl	Ø 600	Ø 600
7000-7990	Stützflansch see main drawing	Stahl	Ø 700	Ø 700
8000-8990	Stützflansch see main drawing	Stahl	Ø 800	Ø 800
9000-9990	Stützflansch see main drawing	Stahl	Ø 900	Ø 900

Pos. No.	Bezeichnung	Material	Abmessung	Material
1000-1990	Stützflansch see main drawing	Stahl	Ø 100	Ø 100
2000-2990	Stützflansch see main drawing	Stahl	Ø 200	Ø 200
3000-3990	Stützflansch see main drawing	Stahl	Ø 300	Ø 300
4000-4990	Stützflansch see main drawing	Stahl	Ø 400	Ø 400
5000-5990	Stützflansch see main drawing	Stahl	Ø 500	Ø 500
6000-6990	Stützflansch see main drawing	Stahl	Ø 600	Ø 600
7000-7990	Stützflansch see main drawing	Stahl	Ø 700	Ø 700
8000-8990	Stützflansch see main drawing	Stahl	Ø 800	Ø 800
9000-9990	Stützflansch see main drawing	Stahl	Ø 900	Ø 900

Uncontrolled when printed or downloaded. Verify that this is the correct version before use.
Reproduction of part or all the contents of the document is prohibited without written permission from PT. Bhumi Jepara Service

*Baugruppe / Component group***8415-3351-040**RIEMENANTRIEB VOLLST.
BELT DRIVE, COMPL.

Pos.	Teil-Nummer	M	ME	Benennung	ETS	Seite
Pos.	Part-No.	Qty.	Unit	Designation	ETS	Page
10	8415-3328-120	1		SATZ MOTORANSCHLUSSTEILE	✓	
				SET OF MOTOR CONNECTION PARTS		
				JUEGO DE PIEZAS DE CONEXIÓN DEL MOTOR		
1000	8415-3008-040	1		MOTORPLATTE GESCHW.	✓	
				MOTOR PLATE, WELDED		
				BASE DE MOTOR, SOLD.		
1010	0019-6538-400	4		SECHSKANTSCHRAUBE	✓	
				HEX HEAD SCREW		
				TORNILLO HEXAGONAL		
1020	0026-1371-400	8		SCHEIBE	✓	
				WASHER_DISK		
				ARANDELA_DISCO		
1030	0013-0280-400	4		SECHSKANTMUTTER	✓	
				HEXAGON NUT		
				TUERCA HEXAGONAL		
1040	8415-3008-060	1		MOTORPLATTE	✓	
				MOTOR PLATE		
				PLACA DEL MOTOR		
1050	0019-6539-400	4		SECHSKANTSCHRAUBE	✓	
				HEX HEAD SCREW		
				TORNILLO HEXAGONAL		
1060	0026-1371-400	8		SCHEIBE	✓	
				WASHER_DISK		
				ARANDELA_DISCO		
1070	0013-0280-400	4		SECHSKANTMUTTER	✓	
				HEXAGON NUT		
				TUERCA HEXAGONAL		
1080	8654-3390-070	1		KUPPLUNG VOLLST.	✓	46
				COUPLING, COMPL.		
				EMBRAGUE, COMP.		
1090	8415-3117-090	1		SCHUTZBLECH	✓	
				GUARD PLATE		
				CHAPA PROTECTORA		
1100	8415-3117-080	1		SCHUTZBLECH GESCHW.	✓	
				GUARD, WELDED		
				CHAPA PROTECTORA, SOLD.		
1110	8690-1780-020	4		DAEMPFER VOLLST.	✓	
				DAMPER COMPL.		
				AMORTIGUADOR COMP.		
	0026-2407-300	14		SCHEIBE	✓	
				WASHER_DISK		
				ARANDELA_DISCO		

*Typ / Model***WATERMASTER CF 3000***Maschinen-Nr. / Machine s/n***8010-991***Trommel-Nr. / Bowl s/n***8010-991***Ausgabe / Edition***24.05.2018***Seite/Page***40/74**

Uncontrolled when printed or downloaded. Verify that this is the correct version before use. GFA Westfallia Separator Group
 Reproduction of part or all the contents of the document is prohibited without written permission from PT. Bhumi Jepara Service