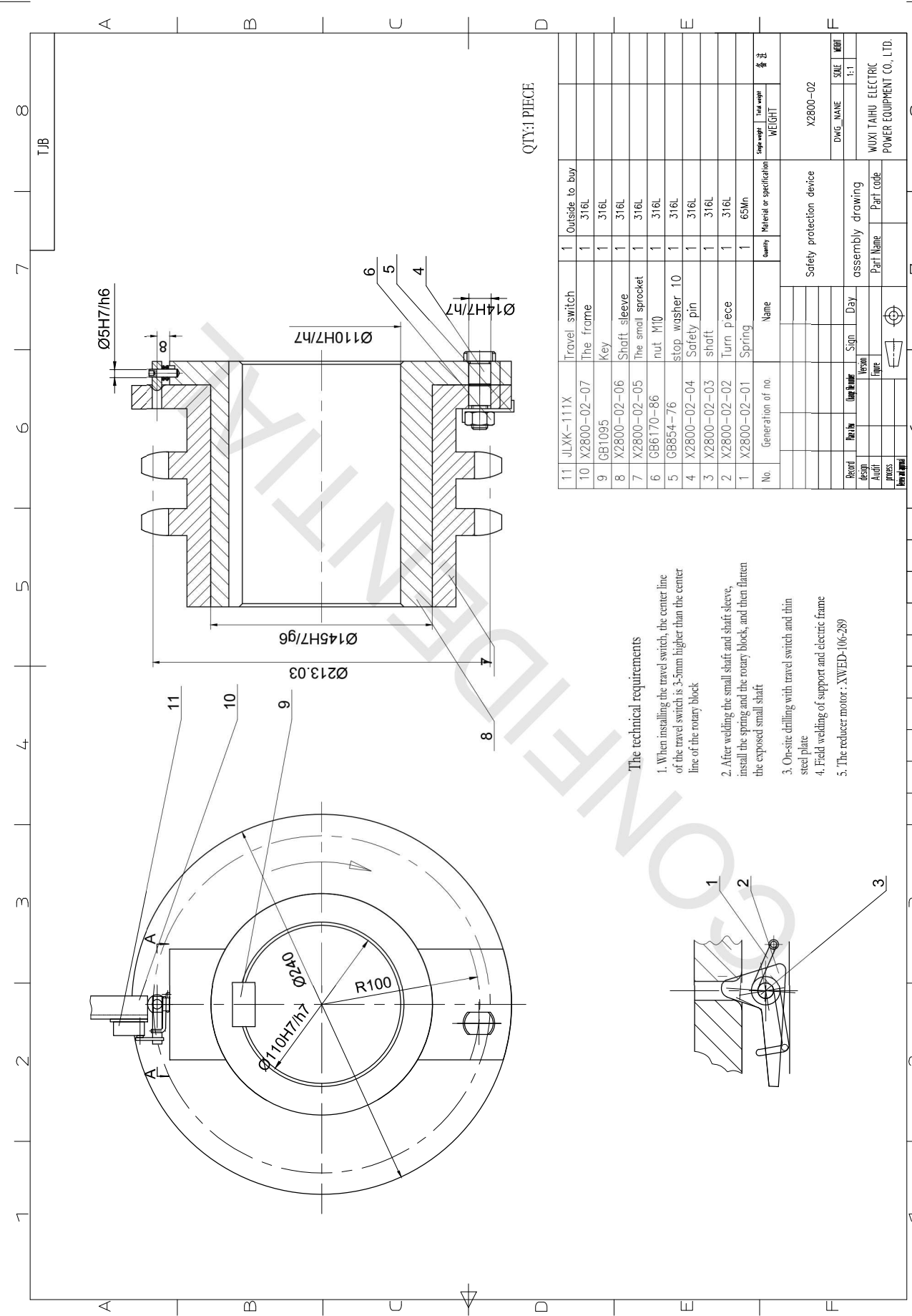


Uncontrolled when printed or downloaded. Verify that this is the correct version before use.
 Reproduction of part or all the contents of the document is prohibited without written permission from PT. Bhumi Jepara Service



QTY:1 PIECE

The technical requirements

1. When installing the travel switch, the center line of the travel switch is 3-5mm higher than the center line of the rotary block
2. After welding the small shaft and shaft sleeve, install the spring and the rotary block, and then flatten the exposed small shaft
3. On-site drilling with travel switch and thin steel plate
4. Field welding of support and electric frame
5. The reducer motor : XWED-106-289

No.	Generation of no.	Name	Quantity	Material or specification	Supp weight	Total weight	备注
11	JLXK-111X	Travel switch	1	Outside to buy			
10	X2800-02-07	The frame	1	316L			
9	GB1095	Key	1	316L			
8	X2800-02-06	Shaft sleeve	1	316L			
7	X2800-02-05	The small sprocket	1	316L			
6	GB6170-86	nut M10	1	316L			
5	GB854-76	stop washer 10	1	316L			
4	X2800-02-04	Safety pin	1	316L			
3	X2800-02-03	shaft	1	316L			
2	X2800-02-02	Turn piece	1	316L			
1	X2800-02-01	Spring	1	65Mn			

Record	Rev/No	Rev/Date	Rev/Reason	Rev/Sign	Rev/Day
design					
audit					
process					
check approval					

Safety protection device		X2800-02	
DWG. NAME	SCALE	DATE	REVISION
			1:1

Part Name	Part code
assembly drawing	

WUXI TAHU ELECTRIC POWER EQUIPMENT CO., LTD.	
--	--

Uncontrolled when printed or downloaded. Verify that this is the correct version before use.
 Reproduction of part or all the contents of the document is prohibited without written permission from PT. Bhumi Jepara Service

