

Technical requirements

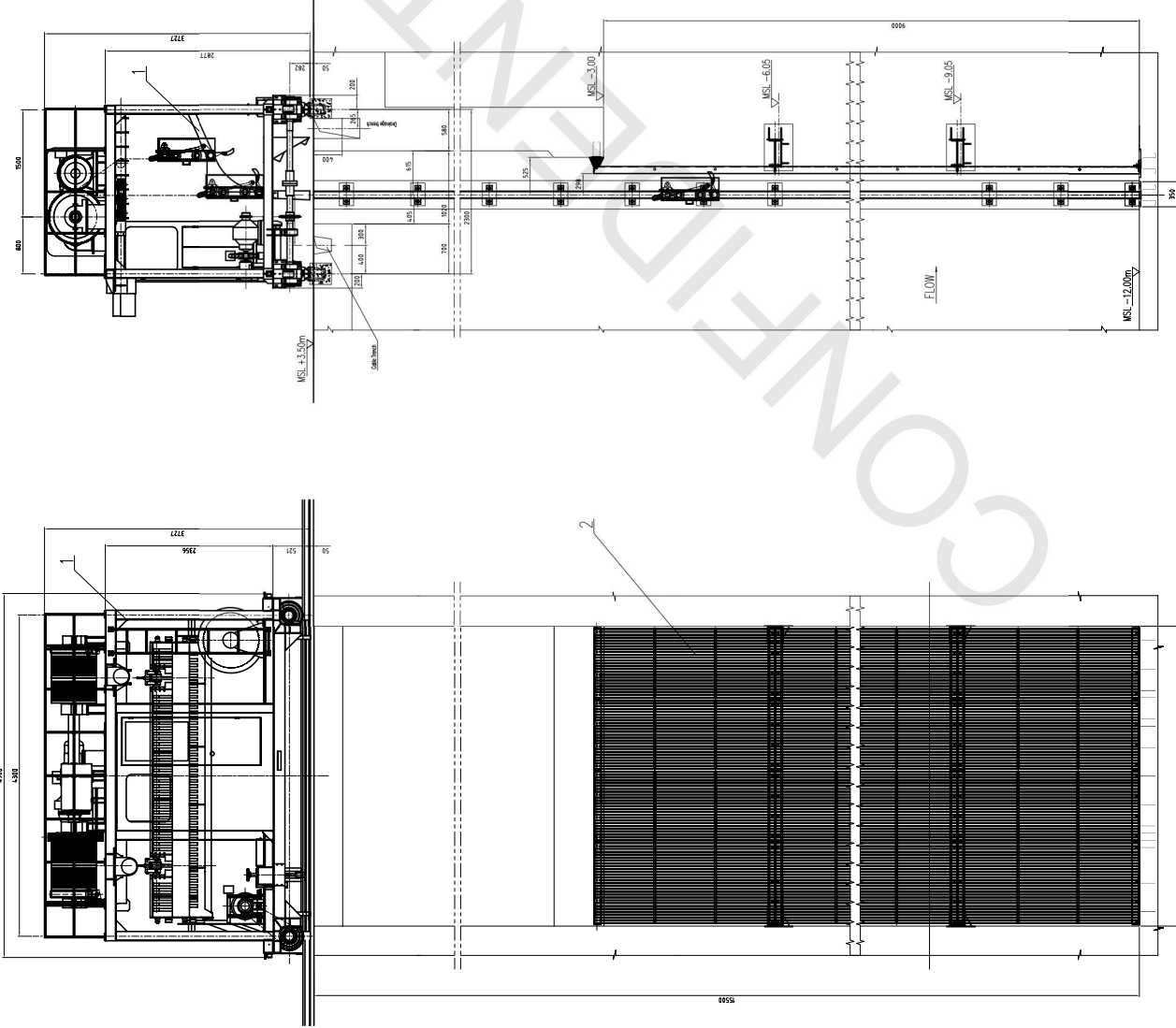
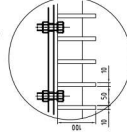
1. Operation test and performance acceptance test shall be taken action before delivery.
2. To be sure the position is right, shall to adjust the limit set.

TRASH RACK	LWS-4000	316L	SET	8	6200	49600		
MOVING SCRAPER	YCB-4000	316L	SET	2	7500	15000		
NO.	NAME	SPEC. & MODEL	MATERIAL	UNIT	QTY	SINGLE	TOTAL	REMARKS
							WEIGHT(kg)	

NOTE: THIS BOX IS APPLICABLE TO 2 UNIT.
MAIN TECHNICAL PARAMETER

NO.	DESCRIPTION	UNIT	VALUE	REMARKS
1	SPECIFICATION		YCB4000	
2	WIDTH OF OPENING	mm	4000	
3	DEPTH OF PUMP BAY	m	15.5	
4	TRAVEL PATH OF CLEANER	P24		
5	TRAVEL TRACK GAGE OF CLEANER	mm	2300	
6	SCRAPER MOVING SPEED	m/min	3	
7	SPEED OF RAKE LIFT	m/min	6	
8	VOLUME OF RAKE	m ³	1.0	
9	LOAD OF RAKE	t	> 1.2	
10	NET GAUGE OF BAR SCREEN	mm	50	
11	VOLTAGE OF MOTOR	V	AC380	
12	POWER OF MAIN MOTOR	KW	5.5	
13	PROTECTION GRADE OF MOTOR	IP55		
14	HANGING HEIGHT	m	5.0	
15	HANGING WEIGHT	t	7.5	
16	EXTERNAL DIMENSIONS OF BAR SCREEN	mm	9140x4000	
17	Grating size	mm	100x10	

Gate assembly size



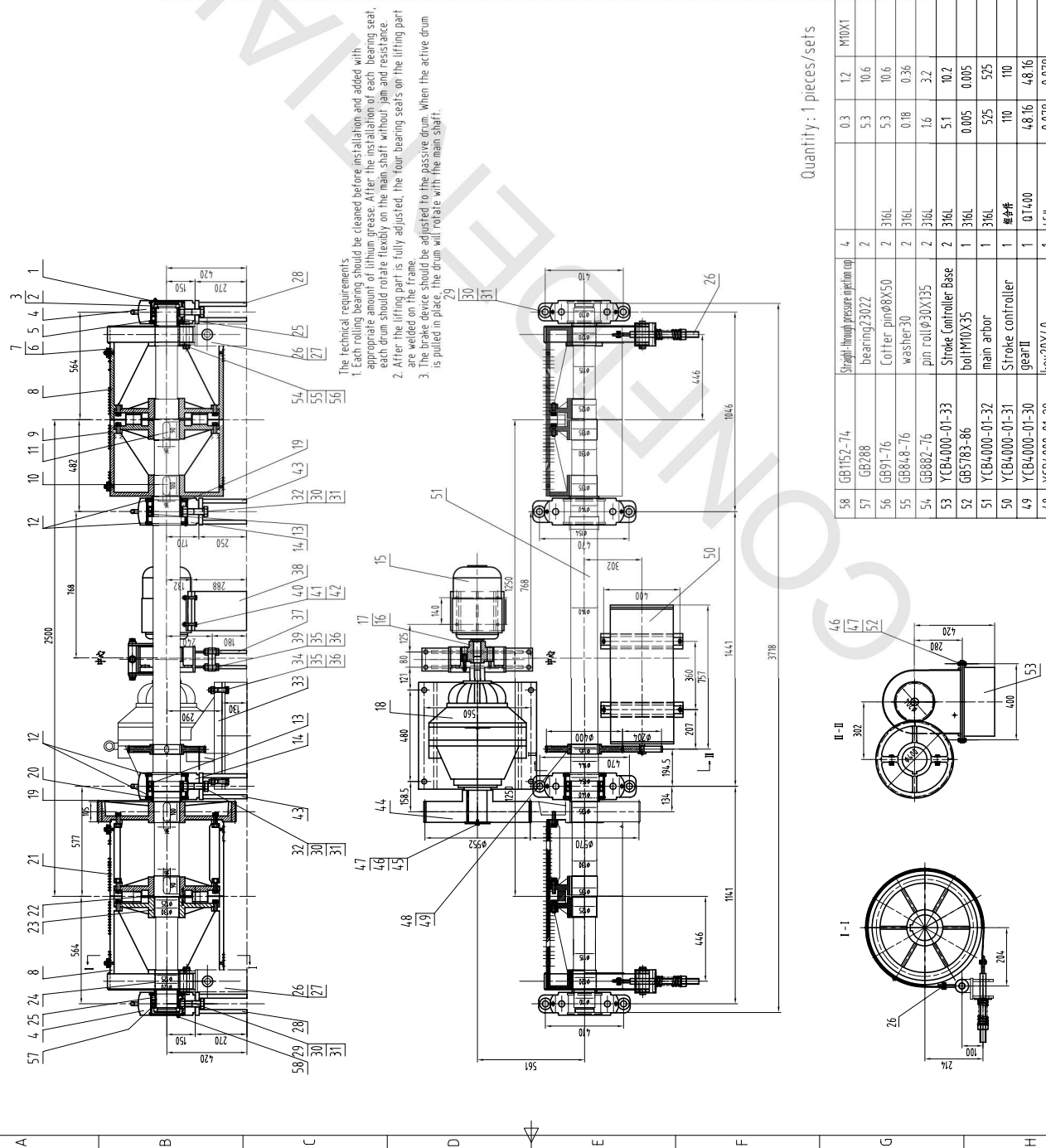
No	Drawing Name	Drawing No
1	General arrangement of pump house and all the structure	TB56-L3-RFF-C-PAH-M-504-2030
2	Piping and instrument diagram including water intake	TB56-L3-RFF-C-PAH-M-PID-204
3	General arrangement of scraper gate in place	TB56-L3-RFF-C-PAH-S-504-910
4	Bar screen and scraper embedded parts	TB56-L3-RFF-C-PAH-S-504-911
5	Bar screen and scraper	TB56-L3-RFF-C-PAH-S-504-910

Uncontrolled when printed or downloaded. Verify that this is the correct version before use.
Reproduction of part or all the contents of the document is prohibited without written permission from PT. Bhumi Jepara.

REVISION	NO	DATE	BY	CHK
0	01/20/2024			
REVISIONS AND RECORD OF ISSUE BY DESIGNED/DESIGN CHECKER				
PT. BHUMI JEPARA				
PROJECT TITLE				
TANJANG MATI B REFINERY (LWS-4000)				
COAL FIRED STEAM POWER PLANT 2 x 1000 MW				
OWNER'S DRAWING				
EPC CONTRACTORS				
Sumitomo Corporation				
PT. Wase Mira Engineering				
AvalPower Japan Ltd.				
PROJECT DRAWING NO.				
TUB56-L3-OFF-C-PAH-M-DGA-9000				
REV. 0				
Bar Screen and SCRAPER				
General Arrangement Drawing				
APP/DESIGN	Spec. 2	DR	DR	DR
CHKD	DR	DR	DR	DR
EPC LOTS SUB-COMTRACTOR				
SPEC NAME				
CW INTAKE EQUIPMENT				
EPC LOTS SUB-COMTRACTOR DRAWING NO.				
WJTH-9000				
EPC LOTS SUB-COMTRACTOR				
SPEC NO.				
67.2110				
EPC LOTS SUB-COMTRACTOR				
DRAWING NO.				
TUB56-L3-OFF-C-PAH-M-DGA-9000				
REV. 0				

TAHUR LAMBO

No.	Generation of no.	Name	Quantity	Material or specification	Note
46	GB5783-86	bolttM10X20	1	316L	0.005
45	YCB4000-01-28	Shaft end clamp	1	316L	0.72
44	YCB4000-01-27	pinion I (Z=92)	1	ZG310-570	23.42
43	YCB4000-01-26	Bearing base III	2	316L	30.5
42					61
41	GB6170-86	nutM12	4	316L	0.061
40	GB5780-86	bolttM2X65	4	316L	0.6
39	GB5780-86	bolttM20X65	4	316L	0.6
38	YCB4000-01-25	Motor base	1	316L	21
37	YCB4000-01-24	Brake base	1	316L	20
36					20
35	GB6170-86	nutM20	4+4	316L	0.061
34	GB5780-86	bolttM20X90	4	316L	0.6
33	YCB4000-01-23	Reducer base	1	316L	29
32	GB5781-86	bolttM30X120	4	316L	0.9
31					0.9
30	GB6170-86	nutM30	4+4	316L	0.24
29	GB5781-86	bolttM30X110	4	316L	0.85
28	YCB4000-01-20	Bearing base I	2	316L	29
27	YCB4000-01-19	Band brake seat	2	316L	3.4
26	YCB4000-01-18	belt brake	2	assembly	9.64
25	YCB4000-01-17	bushingIII	2	011400	4.512
24	YCB4000-01-16	maintenance-free bearing II	2	Oil-bearing nylon	0.5
23	YCB4000-01-15	maintenance-free bearing I	2	Oil-bearing nylon	0.5
22	YCB4000-01-14	bead flange	2	011400	1.07
21	YCB4000-01-13	Right reel (Z=95)	1	assembly	34.4
20		gasket ring	6	wool felt	0.005
19	YCB4000-01-12	bushingI	2	011400	2.72
18	BW3972-289	Cycloid wheel reducer	1		460
17	JB/ZQ4715-1998	arrester 12A-300/200	1	assembly	59
16	YCB4000-01-11	coupling	1	assembly	15.36
15		electric motorY132S	1		80
14	YCB4000-01-10	bearing seat II	2	assembly	91.09
13	GB2888	bearingZ3078	2		6.7
12	YCB4000-01-09	embossed transparent coverI	4	011400	4.5
11	YCB4000-01-08	key36X90	2	45#	0.57
10	YCB4000-01-07	key36X100	2	45#	0.57
9	YCB4000-01-06	Left-handed reel	1	ZG310-570	206.1
8	YCB4000-01-05	Left and right spro reel	1+1	ZG310-570	349.5
7	GB/T 9944	12NA16x19W+1WR	4	316	60
6	YCB4000-01-04	pressplate	16	assembly	0.26
5	YCB4000-01-03	embossed transparent coverI	2	011400	3.7
4	YCB4000-01-02	bearing seat I	2	assembly	48.82
3	GB858-88	Lock washer100	2	316L	0.07
2	GB812-88	Round nutM100X2	2	316L	0.85
1	YCB4000-01-01	capIII	2	011400	4.1



The technical requirements:
 1. Each rolling bearing should be cleaned before installation and added with appropriate amount of lithium grease. After the installation of each bearing seat, each drum should rotate flexibly on the main shaft without jam and resistance.
 2. After the lifting part is fully adjusted, the four bearing seats on the lifting part are welded on the frame.
 3. The brake device should be adjusted to the passive drum. When the active drum is pulled in place, the drum will rotate with the main shaft.

Quantity: 1 pieces/sets

No.	Generation of no.	Name	Quantity	Material or specification	Note
58	GB1152-74	Streight-through pressure injection cap bearingZ3022	4	M10X1	0.3
57	GB2888	bearingZ3022	2		10.6
56	GB91-76	Cotter pinφ8X50	2	316L	5.3
55	GB849-76	washer30	2	316L	0.18
54	GB882-76	pin rollφ30X135	2	316L	1.6
53	YCB4000-01-33	Stroke Controller Base	2	316L	51
52	GB5783-86	bolttM10X35	1	316L	0.005
51	YCB4000-01-32	main arbor	1	316L	525
50	YCB4000-01-31	Stroke controller	1	316L	110
49	YCB4000-01-30	gearII	1	011400	4.816
48	YCB4000-01-29	key20X40	1	45#	0.078

Lifting Parts

Record	Name	Date	Sign	Day
Drawn				
Checked				
Approved				

ASSEMBLY

Part Name	Part Code
Wuxi Taihu Electric Power Equipment Co., Ltd.	

YCB4000-01

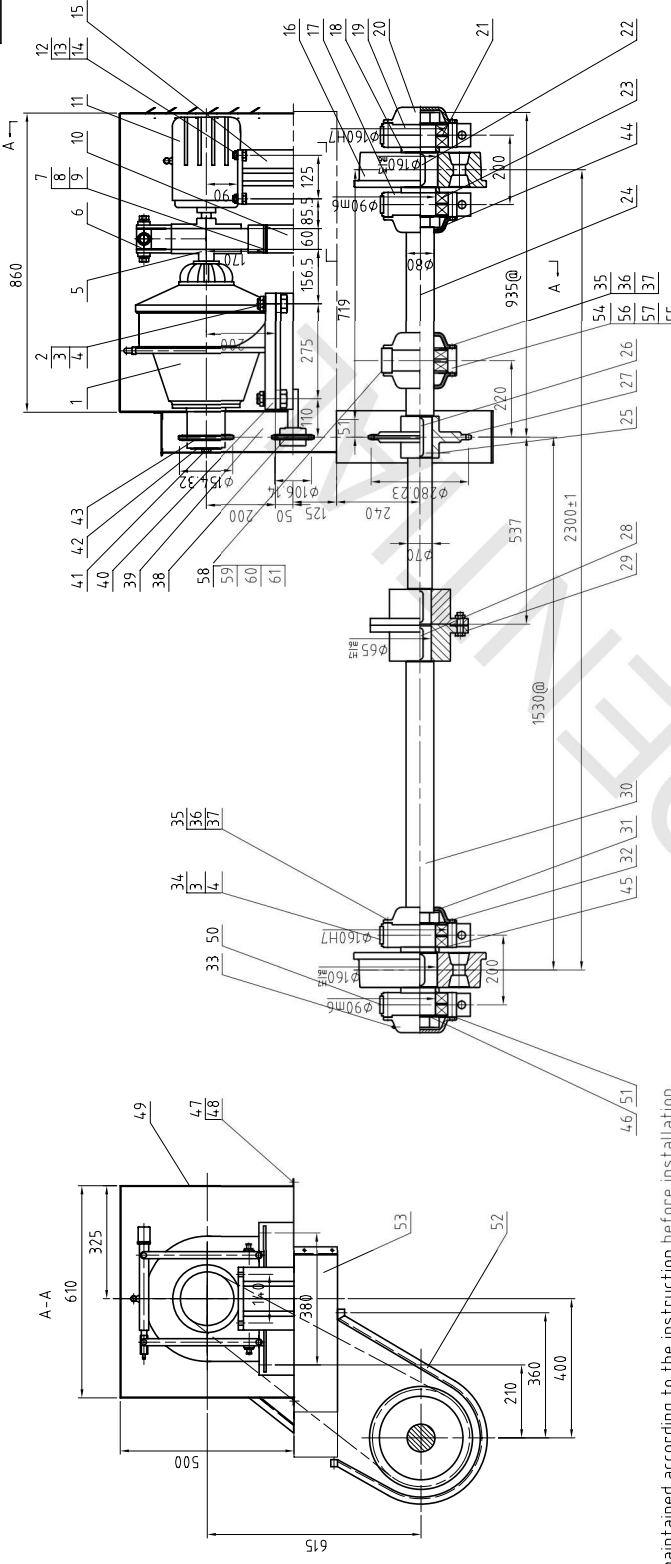
DWG. NAME SIZE WEIGHT

WUXI TAihu ELECTRIC POWER EQUIPMENT CO., LTD.

REPRODUCTION OF PART OR ALL THE CONTENTS OF THIS DOCUMENT IS STRICTLY PROHIBITED WITHOUT WRITTEN PERMISSION FROM WUXI TAihu ELECTRIC POWER EQUIPMENT CO., LTD.

Reproduction of part or all the contents of the document is strictly prohibited without written permission from Wuxi Taihu Electric Power Equipment Co., Ltd.

8



@ This figure is moved to the right 30mm according to usage.

Technical requirements:

1. The motor should be maintained according to the instruction before installation.
2. Brake tile backdistance is 0.4mm.
3. The cyclid reducer should be maintained in accordance with the instructions before installation, and an appropriate amount of lubricating oil should be added.
4. When installing the sleeve roller chain, it should be cleaned with kerosene, soaked in 70-80°C after drying, and then installed and used after filling the hinge gap with oil. When the chain works, it should be regularly filled with lubricating oil to ensure that the pin shaft is not dry.
5. The rolling bearings on both sides of the walking wheel should be thoroughly cleaned before installation, and smear an appropriate amount of grease to ensure their flexible rotation.
6. During installation, ensure the assembly sizes shown in the figure. After the relative position sizes of each part are aligned, weld the Angle bearing seat positioning plate, reducer base, brake base and motor base with the form of fixed weld as follows.

No.	Part Name	Material	Quantity	Unit	Remarks	Material	Quantity	Unit	Remarks	
60	GB971-76	washer	2	316L						
59	GB41-86	nutM20	2	316L						
58	GB5780-86	bolHM20X80	2	316L						
57	QT-02-23	bead flange	1	316L						
56	QT-02-22	bearing block	1	ZG310-570						
55	QT-02-21	inner cover	2	QT400						
54	GB297-86	bearing30216	2	outsourcing						
53	QT-02-20	Sprocket top housing	1	316L						
52	QT-02-19	Bottom housing of sprocket	1	316L						
51		Asbestos rubber cushion	8	rubber						
50	QT-02-18	Positioning plate	8	316L						
49		The shield of the driving part	1	316L						
48										
47	GB5786-86	bolHM6X10	12	316L						
46	GB888-76	lock washer85	4							
45	GB1235-76	Reproduction of part or all the contents of the document is prohibited without written permission from P. Pr. Bruntjaya Service								
44	GB1235-76	0-ring85X31	2	rubber-2						
43	QT-02-17	Small sprocket	1	ZCr13						
42	GB892-76	head flangeB90	1	316L						
41	GB5780-86	bolHM2X30	1	316L						
40	QT-02-16	Reducer base	1	316L						
39	GB1243-76	bush roller chain	1	stainless steel						
38	QT-02-15	Tensioning Wheel Device	1	assembly						
37										
36	GB41-86	nutM12	36	316L						
35	GB5780-86	bolHM2X110	36	316L						
34	GB5780-86	bolHM20X70	8	316L						
33	GB1152-79	grease cupM10X1	4	assembly						
32	GB810-76	round nut M85X2	8	316L						
31	QT-02-14	Outer cover	2	QT400						
30	QT-02-13	axlefreeII	1	316L						
29	YCB4000-02-29	Half coupling	2	QT400						
28	GB1096-79	key18X160	2	316L						
27	QT-02-12	large chain wheel	1	ZCr13						
26	GB1096-79	key20X110	1	316L						
25	GB5782-86	fastening bolt	1	316L						
24	QT-02-10	axlefree I	1	316L						
23	GB297-86	bearing30218	8	outsourcing						
22	GB1096-79	key28X90	2	316L						
21	QT-02-09	check ring	4	316L						
20										
19										
18	QT-02-06	bead flange	4	QT400						
17	QT-02-05	inner cover	4	QT400						
16	QT-02-04	wheel	2	ZG310-570						
15	QT-02-03	motor base	1	316L						
14										
13	GB41-86	nutM10	2	316L						
12	GB5780-86	bolHM10X45	4	316L						
11	QT-02-02	electric motorY90L-4	1	outsourcing						
10	QT-02-02	Brake base	1	316L						
9										
8	GB41-86	nut M16	8	316L						
7	GB5780-86	bolHM6X35	8	316L						
6	TJ2-200dent	coupling	1	outsourcing						
5	QT-02-01	coupling	1	assembly						
4										
3	GB41-86	nutM20	12	316L						
2	GB5780-86	bolHM20X75	4	316L						
1	BWE2718-289-15	reducer	1	outsourcing						
No.	Generation of no.	Quantity	Material or specification	Weight	Note					
					YCB4000-02					
					Drive Part					
					ASSEMBLY					
					Part Name					
					Part Code					
					WUXI TAHU ELECTRIC POWER EQUIPMENT CO., LTD.					