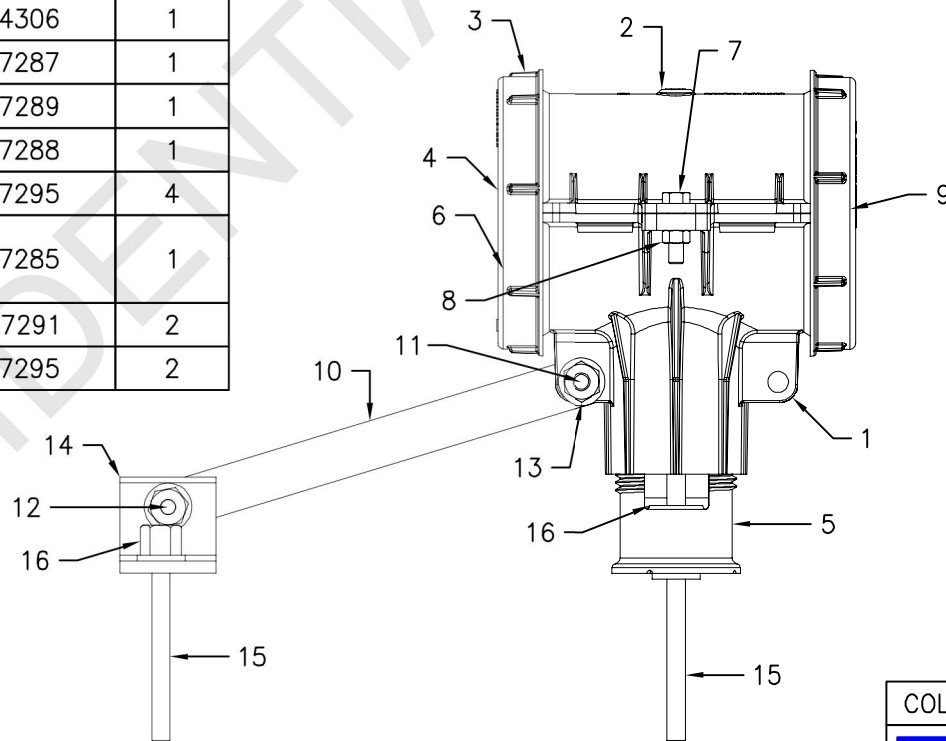
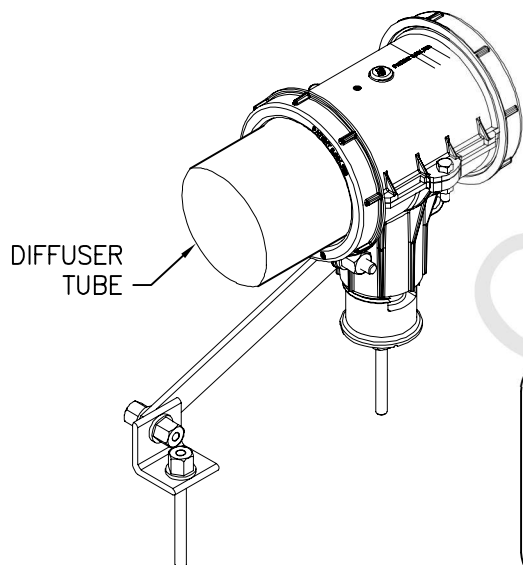


BILL OF MATERIAL			
NO.	PART DESCRIPTION	PART NUMBER	QUANTITY
1	Base, Coupling, Split, GFFPP, 4, for 0.375" FRP Restraint Hardware	07292	1
2	Coupling, StreamLine, Top Section, TFPP, 4"	04301	1
3	Ring, Coupling, Split, GFPP, 4"	04302	2
4	Gasket, StreamLine Coupling, EPDM-Level 5 Fluorination, 4"	05899	1
5	Support, Guide, Base, GFPP, C/L Range: 7.500" - 16.500"	03162	1
6	Sleeve, Internal, Streamline, ABS Sdr26, 4"	05759	1
7	Bolt, Hex, TPU 40% GF, 0.313"-18 x 1.250	07297	2
8	Nut, Hex, TPU 40% GF, 0.313"-18	07296	2
9	Plug, StreamLine, GFPP, 4"	04306	1
10	Brace, 1" x 9.940" x 0.250", Fiberglass, 9"	07287	1
11	Stud, Fiberglass, Threaded, 0.375-16 x 3"	07289	1
12	Stud, Fiberglass, Threaded, 0.375-16 x 2"	07288	1
13	Nut, Hex, Fiberglass, 0.375"-16	07295	4
14	Support, Floor Mount, End Brace, Fiberglass, 2" x 2" x 2" x 0.250", for 0.375" anchor (For Overage)	07285	1
15	Stud, Fiberglass, Threaded, 0.375-16 x 6"	07291	2
16	Nut, Hex, Fiberglass, 0.375"-16	07295	2



TITLE TANJUNG JATI B, INDONESIA		
DESCRIPTION: BLUE SUPPORT PART LIST		
EDI FLEXAIR® AERATION-MIXING SYSTEM		
PROJECT ID: 31678	SHEET NO: 1 OF 1	DWG NO: 156052

FOR: TEM
BY: VJN
DATE 1/7/20
SCALE N.T.S.

ENVIRONMENTAL DYNAMICS INT'L
 5601 PARIS ROAD
 COLUMBIA, MISSOURI 65202
 PHONE: 573-474-9456
 FAX: 573-474-6988
 WWW.WASTEWATER.COM



REV.	DATE

Uncontrolled when printed or downloaded. Verify that this is the correct version before use.
 Reproduction of part or all the contents of the document is prohibited without written permission from PT. Bhumi Jepara Service