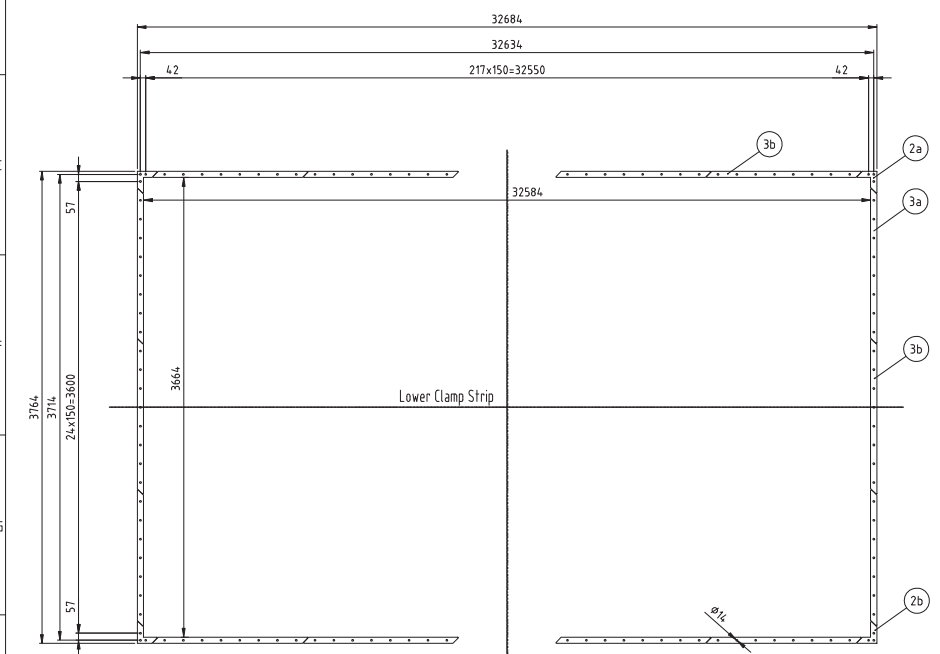
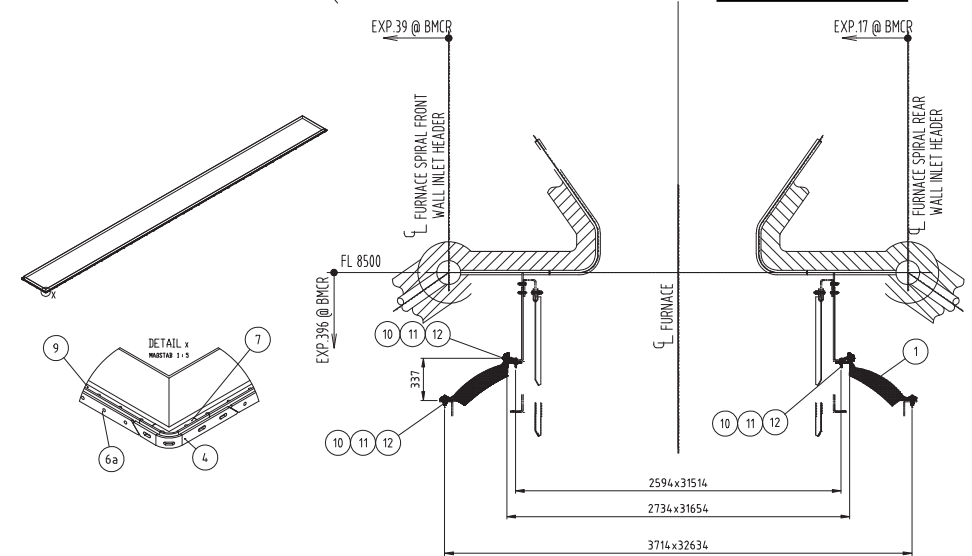
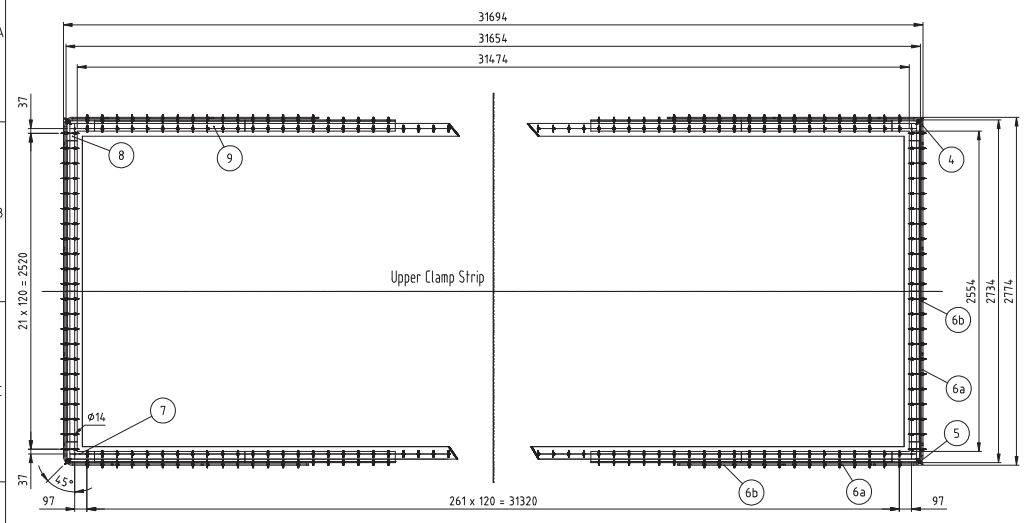


ANNEXURE A



Further information are stated in 1240420-DRB-M005 Equipment Bill of Material List.

12	A13 Washer DIN125	4500
11	M12 Nut DIN934	2250
10	M12x10 Screw DIN933	2250
9	Bracket Straight Section	56
8	Bracket Corner Section 2	2
7	Bracket Corner Section 1	2
6b	Upper Clamp Strip Straight Section 2	76
6a	Upper Clamp Strip Straight Section 1	8
5	Upper Clamp Strip Corner Section 2	2
4	Upper Clamp Strip Corner Section 1	2
3b	Lower Clamp Strip Straight Section 2	4
3a	Lower Clamp Strip Straight Section 1	56
2b	Lower Clamp Strip Corner Section 2	2
2a	Lower Clamp Strip Corner Section 1	2
1	FABRIC COMPENSATOR 725 (750) 32696 x 3776	1

Pos. Description Qty.

Total Weight = 3500kg

REFERENCE DRAWINGS & DOCUMENTS

TECHNICAL SPECIFICATION - 1240420-DRB16-M003 / ES-(XTJB)5,6-71-00-0015 /TJB56-L2-OFF-US-HDA-M-SPC-001

P&ID - 1240420-DRB16-M004 / ES-(XTJB)5,6-71-00-001 /TJB56-L2-OFF-US-HDA-M-PID-001

COATING / PAINTING SYSTEM & PROCEDURE - 1240420-DRB16-G013

<p>CLYDE BERGEMANN D - 46485 WESEL</p>	<p>Scale: 1:20</p> <p>Checked: 11.01.2018 Checked: 11.01.2018</p>	<p>Approved: 11.01.2018 Checked: 11.01.2018</p>	<p>Scale: 1:20</p> <p>Revision: 5</p>	<p>SP-01/SP-02</p>
	<p>Drawing Description: BA - Fabric Compensator Tanjung Jati B 5&amp;6 - 50HDA01</p>		<p>Part No: 1240420-DRB16-M008-G</p>	