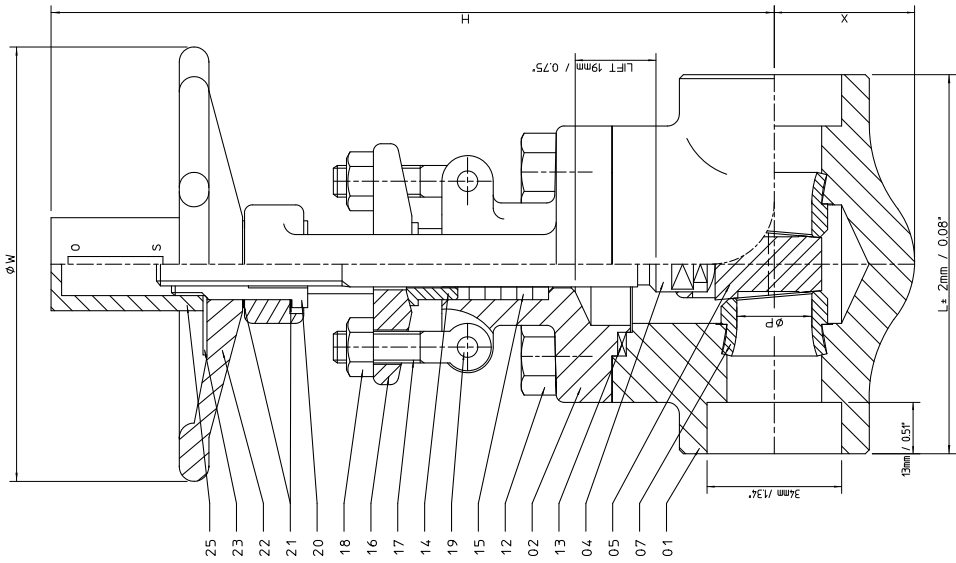


ITEM	QTY.	DESCRIPTION	MATERIAL
01	1	BODY	ASTM A105N / SA105N
02	1	BONNET	ASTM A105N / SA105N
04	1	STEP	A279 410
05	1	WEDGE	A217 CA15
07	2	SEAT RING	A276 410 + STELLITE
12	4	BONNET BOLT	A193 B7
13	1	GASKET	SS304 + GRAPHITE
14	1	GLAND	A276 304
15	1 SET	GLAND PACKING	GRAPHITE
16	1	GLAND FLANGE	A105
17	2	GLAND BOLT	A193 B7
18	2	GLAND NUT	A194 2H
19	2	GLAND BOLT PIN	A276 304
20	1	SLEEVE	A276 410
21	2	SLEEVE WASHER	A276 304
22	1	HANDWHEEL	A197
23	1	NAME PLATE	ALUMINIUM
25	1	COVER TUBE/INDICATOR	SS400 + Zn PLATED
99	1	MPPS NAME PLATE	SS304 (SEE STD NAMEPLATE DRAWING)

TAG CODES:  
 UNIT 66:  
 50HPW0AA012  
 50HPW2AA012  
 50HPW3AA012  
 50HPW4AA012  
 50HPW5AA012  
 50HPW6AA012



Disassembly height 215 mm / 8.5"

ITEM NR.	115		
PRESSURE TESTING ACC.	ASME B14.34		
VALVE DESIGN ACC.	ASME B14.34		
END CONN.	SW ACC. - MITSUBISHI HITACHI DWG.: KUG-653-560		
FIG. NR.	Dongfang 06.7		
COATING SYSTEM	Hempel 16900 (4.0 Dn)		
REV.	DATE DESIGN PUR. MODIFICATION		
2	2018/11/01	AST	Pos. 99 added
APPROVAL			
FORGED STEEL			
WEDGE GATE VALVE			
PRESSURE RATING: CLASS 800			
HP VALVES REF.: 20180207			
CLIENT REF.: XTJB-UGF03-03-005			
PROJECT REF.: Fanyang Jiefu B 546 - Combustion Section			
DRAWING NO. S18-0207-115			
REV. 2			

NOM. SIZE	MAIN DIMENSIONS IN MM. / INCHES						W	X	CY-VALUE
	P	L	H	L	H	X			
25MM / 1"	19 / 0.75	96 / 3.78	205 / 8.07	105 / 4.13	35 / 1.38	22.0			



FORGED STEEL  
 WEDGE GATE VALVE  
 PRESSURE RATING: CLASS 800