

# Downloaded on 30 September 2024 08:10 | Tri Oktia Ervina - ENG BJS A1

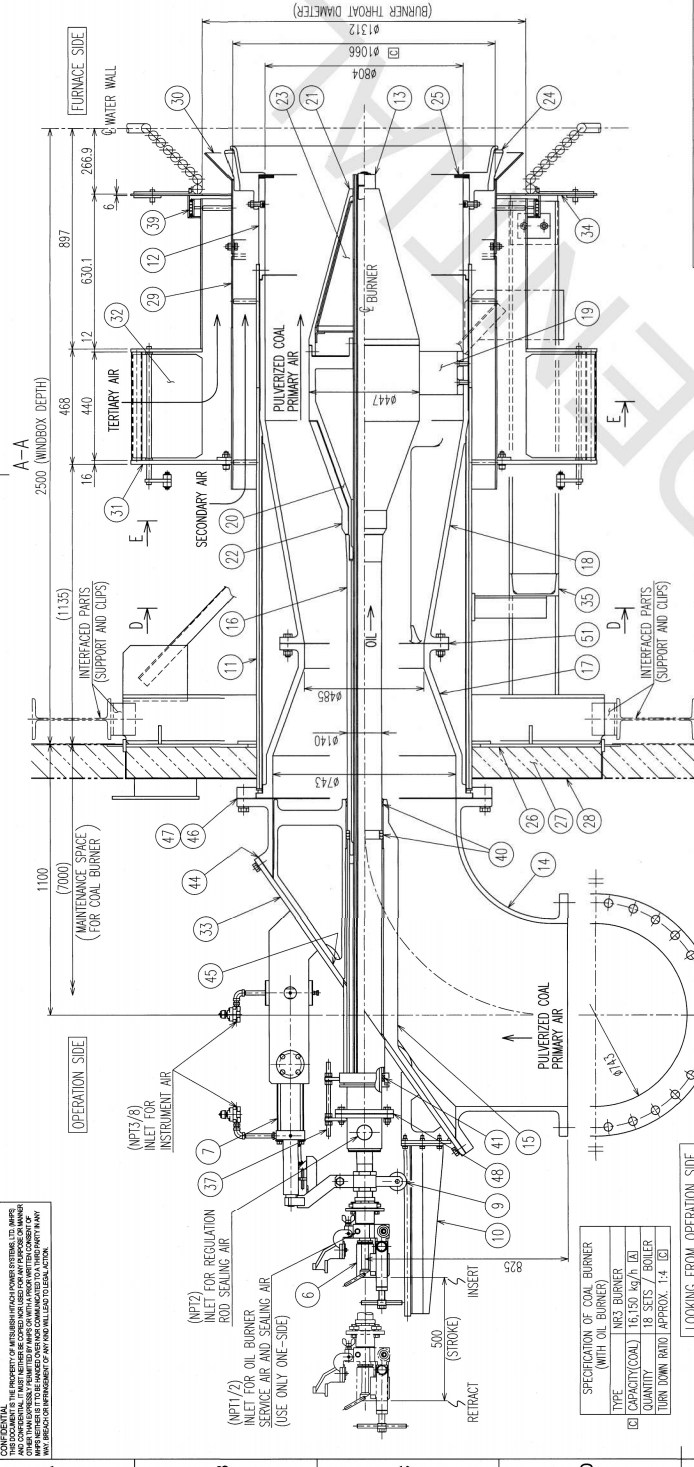
**CONFIDENTIAL**  
THIS DOCUMENT IS THE PROPERTY OF MITSUBISHI HITACHI POWER SYSTEMS LTD. ANY REPRODUCTION OR TRANSMISSION OF THIS DOCUMENT WITHOUT THE WRITTEN PERMISSION OF MITSUBISHI HITACHI POWER SYSTEMS LTD. IS PROHIBITED. THIS DOCUMENT IS NOT TO BE RELEASED TO THE PUBLIC OR TO ANY OTHER PARTY UNLESS SO AUTHORIZED BY MITSUBISHI HITACHI POWER SYSTEMS LTD. ANY REPRODUCTION OR TRANSMISSION OF THIS DOCUMENT WITHOUT THE WRITTEN PERMISSION OF MITSUBISHI HITACHI POWER SYSTEMS LTD. IS PROHIBITED.

REV.	DESCRIPTION	ISSUED BY	CHECKED BY	APPROVED BY	DATE
A	REVISION BY THE CUSTOMERS COMMENT NO.	YAMORI	HIKAWACHI	S.MITO	SEP 21 2017
B	CHANGED THE CUSTOMERS STATUS.	YAMORI	HIKAWACHI	S.MITO	OCT 16 2017
C	REVISION BY THE CUSTOMERS COMMENT NO.	YAMORI	HIKAWACHI	S.MITO	OCT 16 2017
D	SUBMISSION FOR CONSTRUCTION.	YAMORI	HIKAWACHI	S.MITO	NOV 24 2017
E	ISSUED BY DESIGN PROGRESS.	YAMORI	HIKAWACHI	S.MITO	JAN 22 2018

13/05/21 Rev: 4.0 Dwg: 13/05/21 Hitachi-8025-13/05/21 8025

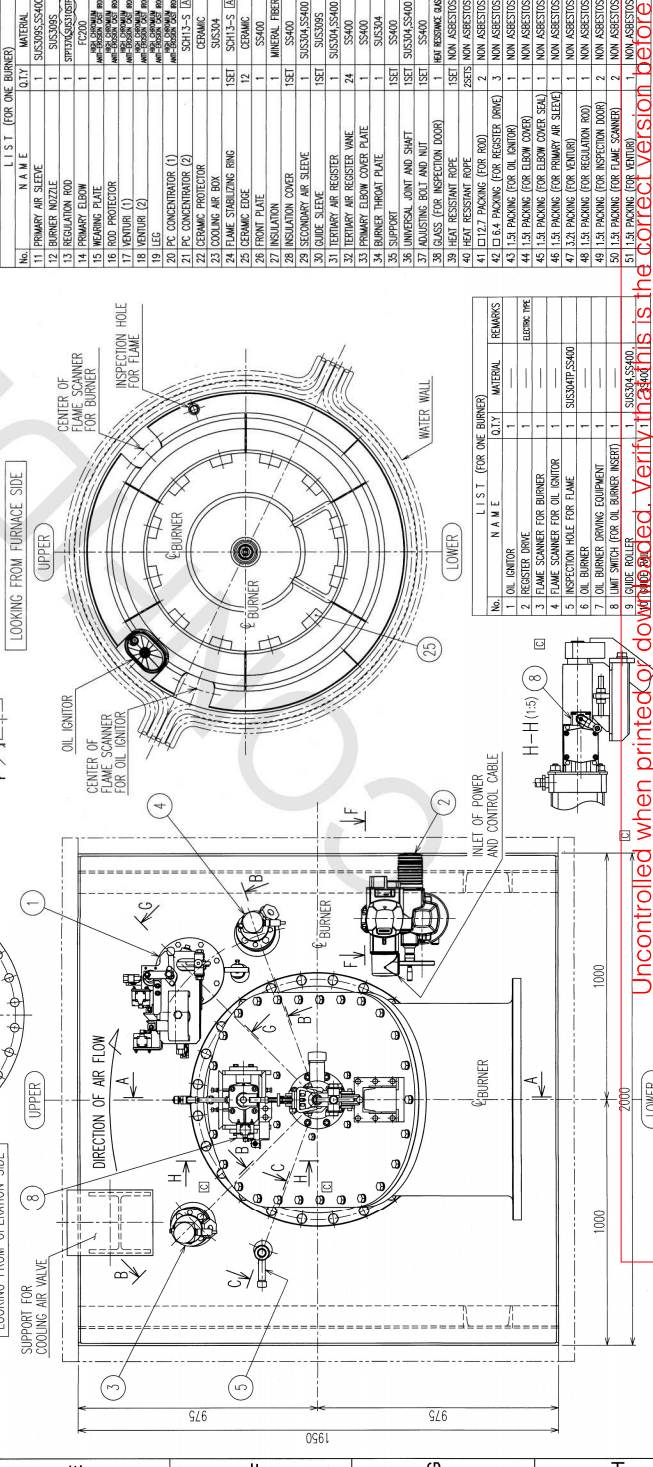
**REFERENCE DRAWINGS**  
 TB56-12-OFF-15-HHA-M-RD-001 (KUI-844-087) ARRANGEMENT OF BURNER FRONT BURNERS  
 TB56-12-OFF-15-HHA-M-RD-002 (KUI-844-088) ARRANGEMENT OF BURNER REAR BURNERS  
 TB56-12-OFF-15-HHA-M-RD-004 (KUI-844-100) ASSEMBLY DRAWING OF PULVERIZED COAL BURNER (2/2)  
 TB56-12-OFF-15-HHA-M-RD-005 (KUI-844-102) ASSEMBLY DRAWING OF OIL BURNER  
 TB56-12-OFF-15-HHA-M-RD-007 (KUI-844-103) ASSEMBLY DRAWING OF OIL BURNER

**NOTES**  
 1. THIS DRAWING SHOWS THE PULVERIZED COAL BURNER (WITH OIL BURNER).  
 2. ON THIS DRAWING, "1-5 BURNER (SPRINGMOUNT)" ARE SHOWN.  
 3. OTHER BURNERS ARE REFER TO ARRANGEMENT DRAWINGS.  
 4. ON THIS DRAWING -> MARK SHOWS THE FLOW OF AIR AND FUEL.



**SPECIFICATION OF COAL BURNER (WITH OIL BURNER)**

TYPE	INCS BURNER
CAPACITY(COAL)	18.150 kg/h (40)
QUANTITY	18 SETS / BURNER
TURN DOWN RATIO (APPROX.)	1.4 : 1.0



**LIST (FOR ONE BURNER)**

No.	N A M E	QTY	MATERIAL	REMARKS
11	PRIMARY AIR SLEEVE	1	SUS304SS400	
12	BURNER NOZZLE	1	SUS304	
13	REGULATION ROD	1	SP745G50P	
14	PRIMARY ELBOW	1	SUS304	
15	REGULATION ROD	1	SUS304	
16	REGULATION ROD	1	SUS304	
17	REGULATION ROD	1	SUS304	
18	REGULATION ROD	1	SUS304	
19	LEG	1	SUS304	
20	PC CONCENTRATOR (1)	1	SUS304	
21	PC CONCENTRATOR (2)	1	SUS304	
22	CERAMIC PROTECTOR	1	LA	
23	COOLING AIR BOX	1	SUS304	
24	FLAME STABILIZING RING	1	SUS304	
25	CERAMIC EDGE	12	CERAMIC	
26	FRONT PLATE	1	SS400	
27	INSULATION	1	MINERAL FIBER	
28	INSULATOR COVER	1	SUS304SS400	
29	REGULATION ROD	1	SUS304	
30	REGULATION ROD	1	SUS304	
31	TERTIARY AIR REGISTER	24	SS400	
32	TERTIARY AIR REGISTER WAVE	1	SS400	
33	PRIMARY ELBOW COVER PLATE	1	SUS304	
34	BURNER THROAT PLATE	1	SUS304	
35	SUPPORT	1	SUS304	
36	UNIVERSAL JOINT AND SHAFT	1	SUS304SS400	
37	ADJUSTING BOLT AND NUT	1	SS400	
38	BASES (FOR INSPECTION DOOR)	1	HEAT RESISTANT	
39	HEAT RESISTANT ROPE	1	HEAT RESISTANT	
40	HEAT RESISTANT ROPE	2	HEAT RESISTANT	
41	ELBOW PACKING (FOR ROD)	2	NON ASBESTOS	
42	ELBOW PACKING (FOR OIL INLET)	2	NON ASBESTOS	
43	ELBOW PACKING (FOR OIL INLET)	2	NON ASBESTOS	
44	ELBOW PACKING (FOR OIL INLET)	2	NON ASBESTOS	
45	ELBOW PACKING (FOR OIL INLET)	2	NON ASBESTOS	
46	ELBOW PACKING (FOR OIL INLET)	2	NON ASBESTOS	
47	ELBOW PACKING (FOR OIL INLET)	2	NON ASBESTOS	
48	ELBOW PACKING (FOR OIL INLET)	2	NON ASBESTOS	
49	ELBOW PACKING (FOR OIL INLET)	2	NON ASBESTOS	
50	ELBOW PACKING (FOR OIL INLET)	2	NON ASBESTOS	
51	ELBOW PACKING (FOR OIL INLET)	2	NON ASBESTOS	

**LIST (FOR ONE BURNER)**

No.	N A M E	QTY	MATERIAL	REMARKS
1	OIL INLET	1	---	
2	REGISTER ROPE	1	---	
3	FLAME SCANNER FOR BURNER	1	---	
4	FLAME SCANNER FOR OIL INLET	1	---	
5	INSPECTION HOLE FOR FLAME	1	SUS304SS400	
6	OIL BURNER	1	---	
7	OIL BURNER DRIVING EQUIPMENT	1	---	
8	LIMIT SWITCH (FOR OIL BURNER INSERT)	1	---	
9	CABLE ROLLER	1	SUS304SS400	

**LIST (FOR ONE BURNER)**

No.	N A M E	QTY	MATERIAL	REMARKS
1	OIL INLET	1	---	
2	REGISTER ROPE	1	---	
3	FLAME SCANNER FOR BURNER	1	---	
4	FLAME SCANNER FOR OIL INLET	1	---	
5	INSPECTION HOLE FOR FLAME	1	SUS304SS400	
6	OIL BURNER	1	---	
7	OIL BURNER DRIVING EQUIPMENT	1	---	
8	LIMIT SWITCH (FOR OIL BURNER INSERT)	1	---	
9	CABLE ROLLER	1	SUS304SS400	

**LIST (FOR ONE BURNER)**

No.	N A M E	QTY	MATERIAL	REMARKS
1	OIL INLET	1	---	
2	REGISTER ROPE	1	---	
3	FLAME SCANNER FOR BURNER	1	---	
4	FLAME SCANNER FOR OIL INLET	1	---	
5	INSPECTION HOLE FOR FLAME	1	SUS304SS400	
6	OIL BURNER	1	---	
7	OIL BURNER DRIVING EQUIPMENT	1	---	
8	LIMIT SWITCH (FOR OIL BURNER INSERT)	1	---	
9	CABLE ROLLER	1	SUS304SS400	

**LIST (FOR ONE BURNER)**

No.	N A M E	QTY	MATERIAL	REMARKS
1	OIL INLET	1	---	
2	REGISTER ROPE	1	---	
3	FLAME SCANNER FOR BURNER	1	---	
4	FLAME SCANNER FOR OIL INLET	1	---	
5	INSPECTION HOLE FOR FLAME	1	SUS304SS400	
6	OIL BURNER	1	---	
7	OIL BURNER DRIVING EQUIPMENT	1	---	
8	LIMIT SWITCH (FOR OIL BURNER INSERT)	1	---	
9	CABLE ROLLER	1	SUS304SS400	

Uncontrolled when printed or downloaded. Verify that this is the correct version before use. Reproduction of part or all the contents of the document is prohibited without written permission from PT. Bhumi Jati Power.

**PT. Bhumi Jati Power**  
**TANJUNG JATI B EXPANSION (JAWA-4)**  
**COAL FIRED STEAM POWER PLANT**  
**2 x 1,000 MW**

**OWNER'S ENGINEER**  
**POYRY**

**EPC CONTRACTORS**  
**Sumitomo Corporation**  
**PT. Wasa Mitra Engineering**  
**AvantiPower Japan Ltd.**

**PROJECT TITLE**  
**TJ56-12-OFF-15-HHA-M-DRD-0003**

**PROJECT DWG. No.**  
**1**

**ASSEMBLY DRAWING OF PULVERIZED COAL BURNER (1/2) (WITH OIL BURNER)**

**DATE**  
**17/1**

**PROJECT DWG. No.**  
**1**

**TEAM CODE**  
**HEB03000**

**Drawn**  
**YAMORI**  
**Checked**  
**HIKAWACHI**  
**Approved**  
**S.MITO**

**Scale**  
**1:1.0**

**Sheet No.**  
**1**

**Rev.**  
**1**

**Engineering**  
**Sumitomo Engineering**  
**Kobe Boiler Engineering**

**MITSUBISHI HITACHI POWER SYSTEMS**  
**Engineering Headquarters/Boiler Technology/ITERATION DIVISION**

**AutoCAD LT2015**