

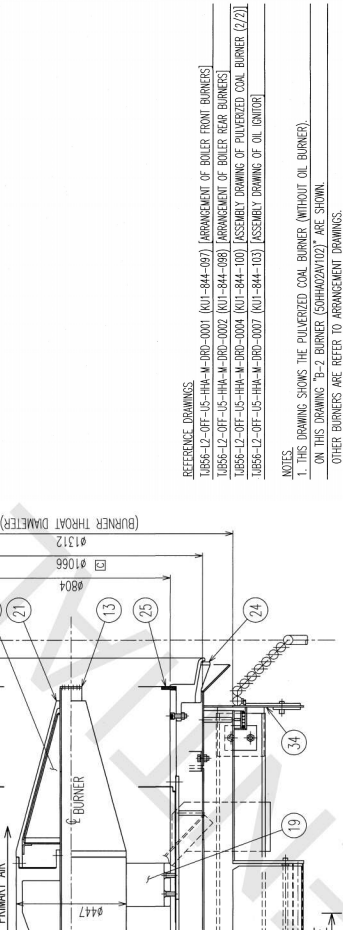
Downloaded on 30 September 2024 08:10 | Tri Okta Erina - ENG BJS 2 A1

CONFIDENTIAL
 THIS DOCUMENT IS THE PROPERTY OF MITSUBISHI HITACHI POWER SYSTEMS, LTD. ANY REPRODUCTION OR TRANSMISSION OF THIS DOCUMENT WITHOUT THE WRITTEN PERMISSION OF MITSUBISHI HITACHI POWER SYSTEMS, LTD. IS PROHIBITED. ANY REPRODUCTION OR TRANSMISSION OF THIS DOCUMENT WITHOUT THE WRITTEN PERMISSION OF MITSUBISHI HITACHI POWER SYSTEMS, LTD. IS PROHIBITED. ANY REPRODUCTION OR TRANSMISSION OF THIS DOCUMENT WITHOUT THE WRITTEN PERMISSION OF MITSUBISHI HITACHI POWER SYSTEMS, LTD. IS PROHIBITED.

REV.	DESCRIPTION	ZONE	REVISED REVISIONS	CHECKED	APPROVED	DATE
A	REVIEWED BY THE CUSTOMERS COMMENT NO.		YAMORI 19/09/2021 S.MITO	H.HIKUCHI 19/09/2021 S.MITO		SEP 21 2017
B	CHANGED BY THE CUSTOMERS STATUS.		YAMORI 18/10/2017 S.MITO	H.HIKUCHI 18/10/2017 S.MITO		OCT 18 2017
C	REVIEWED BY THE CUSTOMERS COMMENT NO.		YAMORI NOV 21 2017 S.MITO	H.HIKUCHI NOV 22 2017 S.MITO		NOV 24 2017
D	SUBMISSION FOR CONSTRUCTION.		YAMORI JAN 22 2018 S.MITO	H.HIKUCHI JAN 22 2018 S.MITO		JAN 22 2018
E	ISSUED BY DESIGN PROGRESS.		YAMORI MAY 30 2018 S.MITO	H.HIKUCHI MAY 30 2018 S.MITO		MAY 30 2018

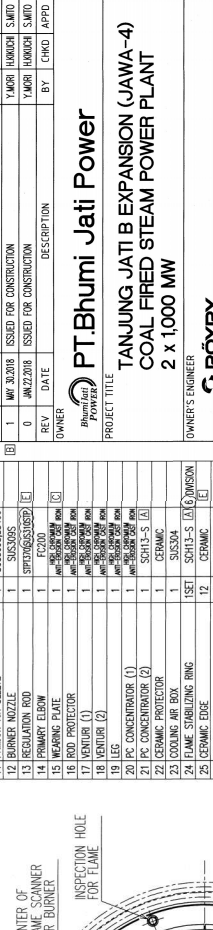
REFERENCE DRAWINGS
 TABLE-L2-OFF-US-HHA-M-DRD-001 (KUII-844-001) [ARRANGEMENT OF BURNER FRONT BURNERS]
 TABLE-L2-OFF-US-HHA-M-DRD-002 (KUII-844-002) [ARRANGEMENT OF BURNER REAR BURNERS]
 TABLE-L2-OFF-US-HHA-M-DRD-004 (KUII-844-100) [ASSEMBLY DRAWING OF PULVERIZED COAL BURNER (2/2)]
 TABLE-L2-OFF-US-HHA-M-DRD-007 (KUII-844-103) [ASSEMBLY DRAWING OF OIL BURNER]

NOTES
 1. THIS DRAWING SHOWS THE PULVERIZED COAL BURNER (WITHOUT OIL BURNER).
 ON THIS DRAWING, "2" BURNER (CONCENTRATOR) ARE SHOWN.
 OTHER BURNERS ARE REFERRED TO ARRANGEMENT DRAWINGS.
 2. ON THIS DRAWING -> MARK SHOWS THE FLOW OF AIR AND FUEL.

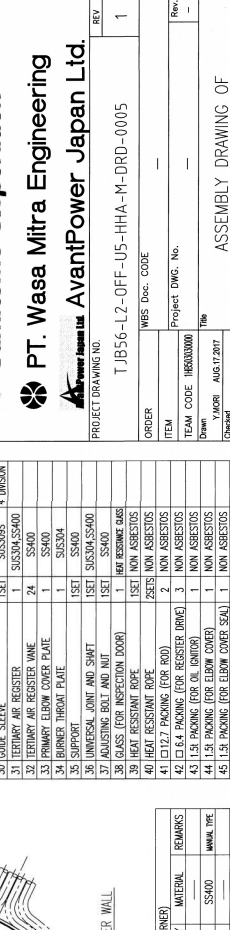


TYPE	NR3 BURNER
CAPACITY(COAL)	16,150 kg/A (6)
QUANTITY	18 SETS / BURNER
TURN DOWN RATIO	APPROX. 1:4 (6)

LOOKING FROM OPERATION SIDE
 SUPPORT FOR COOLING AIR VALVE



LOOKING FROM FURNACE SIDE
 UPPER
 LOWER



L I S T (FOR ONE BURNER)		MATERIAL		REMARKS
No.	N A M E	Q T Y		
1	OIL INDICATOR	1	NON ASBESTOS	
2	REGISTER DRIVE	1	SS400	WAL TYPE
3	FLAME SCANNER FOR BURNER	1	SS400	
4	FLAME SCANNER FOR OIL INDICATOR	1	SUS304	
5	INSPECTION HOLE FOR FLAME	1	SUS304/SS400	
6	INNER TUBE	1	SPRINTSUS304S	[E]
7				
8				
9				
10				
11				
12				
13				
14				
15				
16				
17				
18				
19				
20				
21				
22				
23				
24				
25				
26				
27				
28				
29				
30				
31				
32				
33				
34				
35				
36				
37				
38				
39				
40				
41				
42				
43				
44				
45				
46				
47				
48				
49				
50				
51				
52				
53				
54				
55				
56				
57				
58				
59				
60				

PT.Bhumi Jati Power
 TANJUNG JATI B EXPANSION (JAWA-4)
 COAL FIRED STEAM POWER PLANT
 2 x 1,000 MW

OWNER'S ENGINEER
G PÖYRY

EPC CONTRACTORS
Sumitomo Corporation
PT. Wasa Mitra Engineering
AvantiPower Japan Ltd.

PROJECT DRAWING NO.
 TJB56-L2-OFF-US-HHA-M-DRD-0005

ORDER
 WBS Doc. Code

ITEM
 Project DWG. No.

TEAM CODE
 6603000

Drawn
 YAMORI AUG 17 2017

Checked
 H.HIKUCHI AUG 17 2017

Approved
 S.MITO

Date
 AUG 17 2017

Department
 1910

Scale
 1:10

Sheet No.
 1

Total
 17-1

ASSEMBLY DRAWING OF
 PULVERIZED COAL BURNER(1/2)
 (WITHOUT OIL BURNER)

Project DWG. No. 6603000

Drawn YAMORI AUG 17 2017

Checked H.HIKUCHI AUG 17 2017

Approved S.MITO

Date AUG 17 2017

Department 1910

Scale 1:10

Sheet No. 1

Total 17-1

WBS Doc. Code

Project DWG. No.

TEAM CODE 6603000

Drawn YAMORI AUG 17 2017

Checked H.HIKUCHI AUG 17 2017

Approved S.MITO

Date AUG 17 2017

Department 1910

Scale 1:10

Sheet No. 1

Total 17-1

Uncontrolled when printed or downloaded. Verify that this is the correct version before use.
 Reproduction of part or all the contents of the document is prohibited without written permission from PT. Bhumi Jati Power.