



The Crane Company

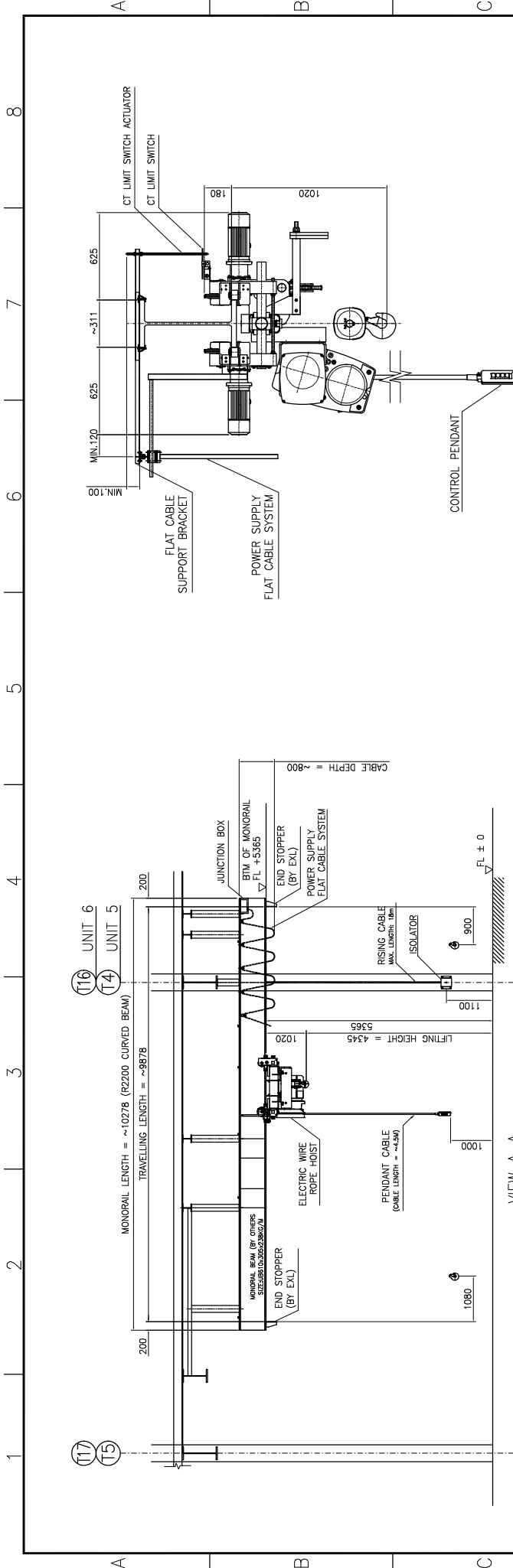
TABLE OF CONTENT

SUB DWG. NO.	TITLE	KKS NO.	TYPE OF HOIST	PAGE NO.
WH9297-G	5T x 4.345m Lifting Electric Hoist for TBFP A BP (for Unit-5) & TBFP A BP (for Unit-6)	50SMM10AE090 (for Unit-5) 60SMM10AE090 (for Unit-6)	Electric Wire Rope Hoist C/W Articulated Trolley	4 of 28
WH9297-G	5T x 4.345m Lifting Electric Hoist for TBFP B BP (for Unit-5) & TBFP B BP (for Unit-6)	50SMM10AE110 (for Unit-5) 60SMM10AE110 (for Unit-6)	Electric Wire Rope Hoist C/W Articulated Trolley	5 of 28
WH9298-G	25T x 4.92m Lifting Electric Hoist for MBFP Motor 1 (for Unit-5) & MBFP Motor 1 (for Unit-6)	50SMM10AE040 (for Unit-5) 60SMM10AE040 (for Unit-6)	Electric Wire Rope Hoist C/W Motorised Trolley	6 of 28
WH9298-G	25T x 4.92m Lifting Electric Hoist for MBFP Motor 2 (for Unit-5) & MBFP Motor 2 (for Unit-6)	50SMM10AE050 (for Unit-5) 60SMM10AE050 (for Unit-6)	Electric Wire Rope Hoist C/W Motorised Trolley	7 of 28
WH9299-G	12.5T x 12.47m Lifting Electric Hoist for BFPT (for Unit-5) & BFPT (for Unit-6)	50SMM10AE030 (for Unit-5) 60SMM10AE030 (for Unit-6)	Electric Wire Rope Hoist C/W Motorised Trolley	8 of 28
CH9300-G	5T x 3.55m Lifting Manual Hoist for MBFP BP (for Unit-5) & MBFP BP (for Unit-6)	50SMM10AE080 (for Unit-5) 60SMM10AE080 (for Unit-6)	Manual Chain Hoist c/w Geared Trolley	10 of 28
CH9301-G	3T x 4.618m Lifting Manual Hoist for MBFP Fluid Coupling (for Unit-5) & MBFP Fluid Coupling (for Unit-6)	50SMM10AE060 (for Unit-5) 60SMM10AE060 (for Unit-6)	Manual Chain Hoist c/w Geared Trolley	11 of 28
CH9302-G	5T x 3.55m Lifting Manual Hoist for CCCWP A (for Unit-5), CCCWP A (for Unit-6), CCCWP B (for Unit-5), CCCWP B (for Unit-6), CCCWP C (for Unit-5) & CCCWP C (for Unit-6),	50SMM10AE120 (for Unit-5) 60SMM10AE120 (for Unit-6) 50SMM10AE130 (for Unit-5) 60SMM10AE130 (for Unit-6) 50SMM10AE140 (for Unit-5) 60SMM10AE140 (for Unit-6)	Manual Chain Hoist c/w Geared Trolley	12 of 28
CH9303-G	5T x 3.95m Lifting Manual Hoist for ACWP (for Unit-5) & ACWP (for Unit-6)	50SMM10AE150 (for Unit-5) 60SMM10AE150 (for Unit-6)	Manual Chain Hoist c/w Geared Trolley	13 of 28
CH9304-G	5T x 3.95m Lifting Manual Hoist for CVP (for Unit-5) & CVP (for Unit-6)	50SMM10AE190 (for Unit-5) 60SMM10AE190 (for Unit-6)	Manual Chain Hoist c/w Geared Trolley	14 of 28
CH9305-G	5T x 3.95m Lifting Manual Hoist for CVP A Motor (for Unit-5), CVP A Motor (for Unit-6), CVP B Motor (for Unit-5) & CVP B Motor (for Unit-6)	50SMM10AE170 (for Unit-5) 60SMM10AE170 (for Unit-6) 50SMM10AE180 (for Unit-5) 60SMM10AE180 (for Unit-6)	Manual Chain Hoist c/w Geared Trolley	15 of 28
CH9306-G	3T x 3.268m Lifting Manual Hoist for LP HTR Drain Pump (for Unit-5) & LP HTR Drain Pump (for Unit-6)	50SMM10AE200 (for Unit-5) 60SMM10AE200 (for Unit-6)	Manual Chain Hoist c/w Geared Trolley	16 of 28
CH9307-G	3T x 7.096m Lifting Manual Hoist for CCCW Heat Exchanger Strainer (for Unit-5) & CCCW Heat Exchanger	50SMM10AE280 (for Unit-5) 60SMM10AE280 (for Unit-6)	Manual Chain Hoist c/w Geared Trolley	17 of 28



The Crane Company

	Strainer (for Unit-6)			
CH9308-G	5T x 4.65m Lifting Manual Hoist for MBFP (for Unit-5) & MBFP (for Unit-6)	50SMM10AE070 (for Unit-5) 60SMM10AE070 (for Unit-6)	Manual Chain Hoist c/w Geared Trolley	18 of 28
CH9309-G	2T x 4.918m Lifting Manual Hoist for CBP A (for Unit-5), CBP A (for Unit-6), CBP B (for Unit-5), CBP B (for Unit-6), CBP C (for Unit-5) & CBP C (for Unit-6)	50SMM10AE240 (for Unit-5) 60SMM10AE240 (for Unit-6) 50SMM10AE250 (for Unit-5) 60SMM10AE250 (for Unit-6) 50SMM10AE260 (for Unit-5) 60SMM10AE260 (for Unit-6)	Manual Chain Hoist c/w Geared Trolley	19 of 28
CH9310-G	5T x 5.098m Lifting Manual Hoist for CBP Motor (for Unit-5) & CBP Motor (for Unit-6)	50SMM10AE270 (for Unit-5) 60SMM10AE270 (for Unit-6)	Manual Chain Hoist c/w Geared Trolley	20 of 28
CH9311-G	Chain Block for Sump Pump	-	Manual Chain Block	21 of 28
CH9312-G	Chain Block for Valves less than 0.5 ton	-	Manual Chain Block	22 of 28
CH9313-G	Chain Block for Valves less than 1.0 ton	-	Manual Chain Block	23 of 28
-	Technical Specifications	-	-	24 of 28



LOADING DATA:
 WEIGHT OF WIRE ROPE HOIST=1000kg
 MAX. WHEEL LOAD=1750kg
 (4 NOS. WHEELS)

REFERENCE:
 ARRANGEMENT DRAWING MONORAIL & HOIST FOR TBFP AND TBFP BP
 (TUB56-L1-OFF-C-SMM-M-DGA-3154)

KKS NO.
 50 SMM10 AE 090 / ELECTRIC HOIST FOR TBFP A BP (FOR UNIT-5)
 60 SMM10 AE 090 / ELECTRIC HOIST FOR TBFP A BP (FOR UNIT-6)

OFFICIAL REVISION NUMBER:2

REV. NO.	DATE	DETAILS	CHECKED BY	APPR. BY	SCALE:	A3	6	7	8	9																																																																					
g	20-01-2022	ISSUE FOR AS-BUILT			N.T.S.																																																																										
f	28-05-2019	REVISED AS PER COMMENTS																																																																													
e	25-04-2019	REVISED AS PER COMMENTS																																																																													
d	18-04-2019	REVISED AS PER COMMENTS																																																																													
c	11-03-2019	REVISED AS PER COMMENTS																																																																													
b	12-02-2019	REVISED AS PER COMMENTS																																																																													
a	18-01-2019	ISSUE FOR APPROVAL																																																																													
<table border="1"> <tr> <td>QUANTITY</td> <td>UNIT 5: 1, UNIT 6: 1</td> <td>TOTAL: 2 UNITS</td> </tr> <tr> <td>SAFE WORKING LOAD/HOIST RATED CAPACITY</td> <td>5000 KG</td> <td></td> </tr> <tr> <td>HOIST TYPE</td> <td>SH5025-20 4/2-1 L2</td> <td></td> </tr> <tr> <td>HOIST CLASS</td> <td>FEM 2m (M5)</td> <td></td> </tr> <tr> <td>HOIST MAKE/COUNTRY</td> <td>STAHL CRANESYSTEMS / GERMANY</td> <td></td> </tr> <tr> <td>HOISTING SPEED</td> <td>10/1.6 M/MIN 9.0/1.4 kW</td> <td></td> </tr> <tr> <td>CROSS TRAVEL</td> <td>20/5 M/MIN 2x0.37/0.09 kW</td> <td></td> </tr> <tr> <td>CONTROL TYPE</td> <td>PENDANT STATION SUSPENDED FROM HOIST</td> <td></td> </tr> <tr> <td>CONTROL VOLTAGE</td> <td>48V</td> <td></td> </tr> <tr> <td>POWER SUPPLY</td> <td>380V / 3PH / 50HZ</td> <td></td> </tr> <tr> <td>MONORAIL LENGTH</td> <td>~10278</td> <td></td> </tr> <tr> <td>MIN CURVE RADIUS</td> <td>2200 mm</td> <td></td> </tr> <tr> <td>LIFTING HEIGHT</td> <td>4345 mm</td> <td></td> </tr> <tr> <td>LWN E.B.NG</td> <td></td> <td></td> </tr> <tr> <td>DATE 18-01-2019</td> <td></td> <td></td> </tr> <tr> <td>CHKD S.P.KAM</td> <td></td> <td></td> </tr> <tr> <td>DATE 18-01-2019</td> <td></td> <td></td> </tr> <tr> <td>APPR. M.W.TUNG</td> <td></td> <td></td> </tr> <tr> <td>DATE 18-01-2019</td> <td></td> <td></td> </tr> <tr> <td>DOC NO.:</td> <td></td> <td></td> </tr> <tr> <td>DWG NO.:</td> <td>WH9297-G</td> <td></td> </tr> <tr> <td>SHEET</td> <td>1/2</td> <td>9</td> </tr> <tr> <td>REV.</td> <td></td> <td></td> </tr> </table>											QUANTITY	UNIT 5: 1, UNIT 6: 1	TOTAL: 2 UNITS	SAFE WORKING LOAD/HOIST RATED CAPACITY	5000 KG		HOIST TYPE	SH5025-20 4/2-1 L2		HOIST CLASS	FEM 2m (M5)		HOIST MAKE/COUNTRY	STAHL CRANESYSTEMS / GERMANY		HOISTING SPEED	10/1.6 M/MIN 9.0/1.4 kW		CROSS TRAVEL	20/5 M/MIN 2x0.37/0.09 kW		CONTROL TYPE	PENDANT STATION SUSPENDED FROM HOIST		CONTROL VOLTAGE	48V		POWER SUPPLY	380V / 3PH / 50HZ		MONORAIL LENGTH	~10278		MIN CURVE RADIUS	2200 mm		LIFTING HEIGHT	4345 mm		LWN E.B.NG			DATE 18-01-2019			CHKD S.P.KAM			DATE 18-01-2019			APPR. M.W.TUNG			DATE 18-01-2019			DOC NO.:			DWG NO.:	WH9297-G		SHEET	1/2	9	REV.		
QUANTITY	UNIT 5: 1, UNIT 6: 1	TOTAL: 2 UNITS																																																																													
SAFE WORKING LOAD/HOIST RATED CAPACITY	5000 KG																																																																														
HOIST TYPE	SH5025-20 4/2-1 L2																																																																														
HOIST CLASS	FEM 2m (M5)																																																																														
HOIST MAKE/COUNTRY	STAHL CRANESYSTEMS / GERMANY																																																																														
HOISTING SPEED	10/1.6 M/MIN 9.0/1.4 kW																																																																														
CROSS TRAVEL	20/5 M/MIN 2x0.37/0.09 kW																																																																														
CONTROL TYPE	PENDANT STATION SUSPENDED FROM HOIST																																																																														
CONTROL VOLTAGE	48V																																																																														
POWER SUPPLY	380V / 3PH / 50HZ																																																																														
MONORAIL LENGTH	~10278																																																																														
MIN CURVE RADIUS	2200 mm																																																																														
LIFTING HEIGHT	4345 mm																																																																														
LWN E.B.NG																																																																															
DATE 18-01-2019																																																																															
CHKD S.P.KAM																																																																															
DATE 18-01-2019																																																																															
APPR. M.W.TUNG																																																																															
DATE 18-01-2019																																																																															
DOC NO.:																																																																															
DWG NO.:	WH9297-G																																																																														
SHEET	1/2	9																																																																													
REV.																																																																															



PLAN VIEW

ALL DIMENSIONS IN MILLIMETRE UNLESS OTHERWISE SPECIFIED