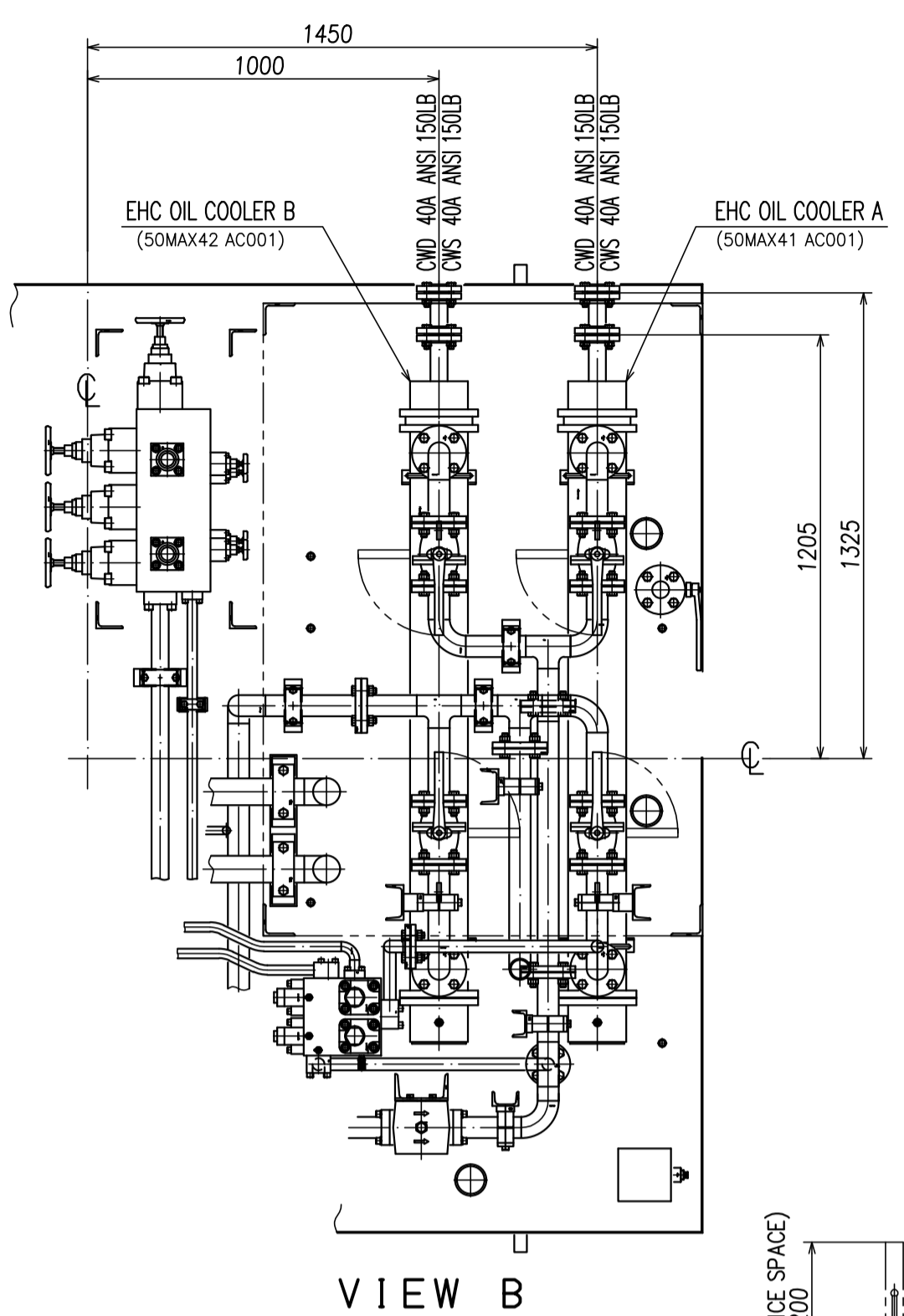
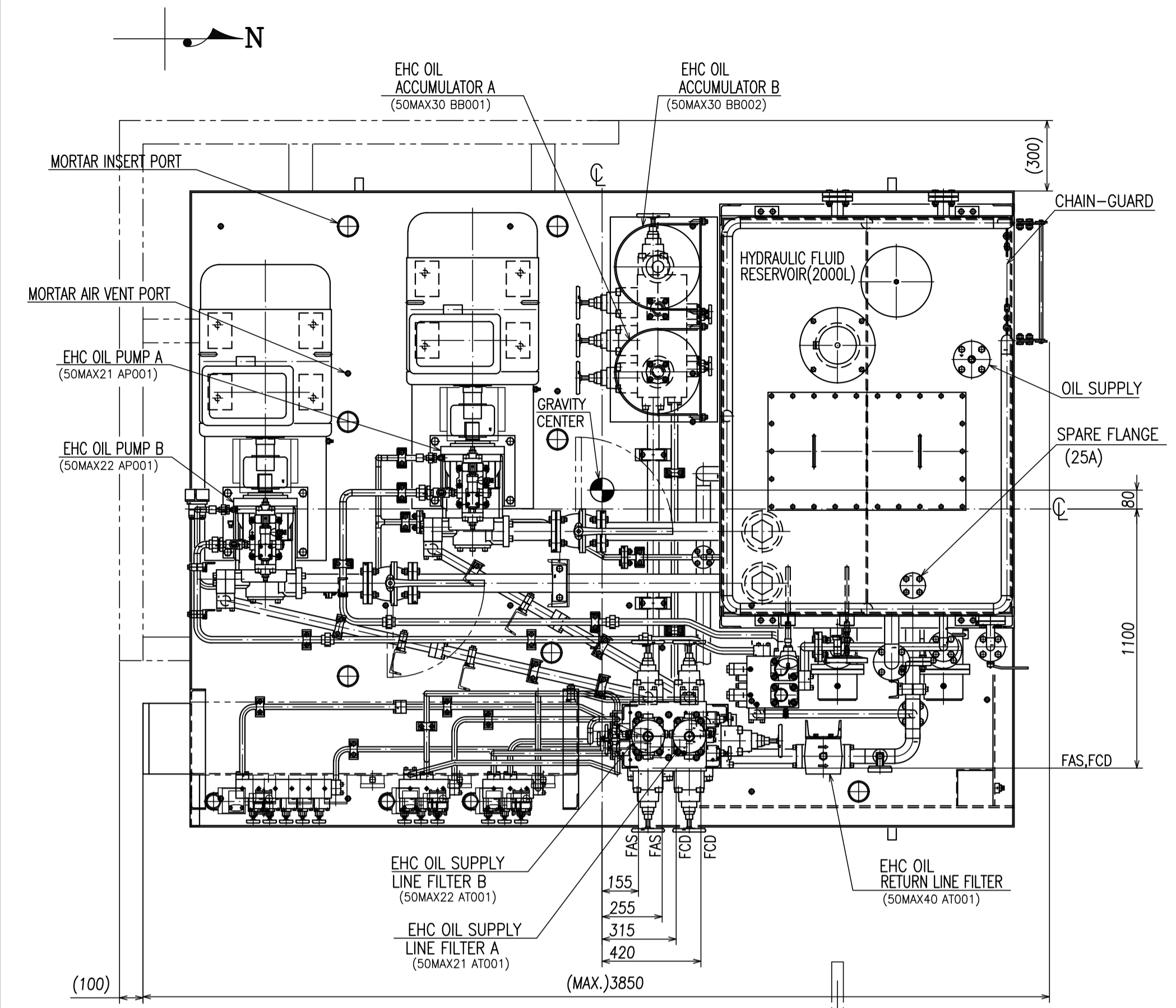
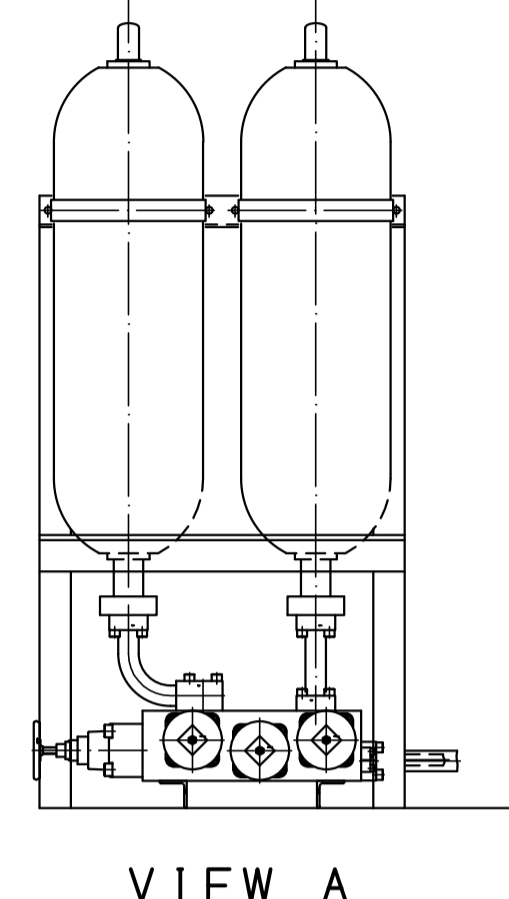


この図面は指定スル規格・標準等ヲ、  
 発行年・変更記号ノ指示ガマイナシ  
 最新版ヲ適用スルコト



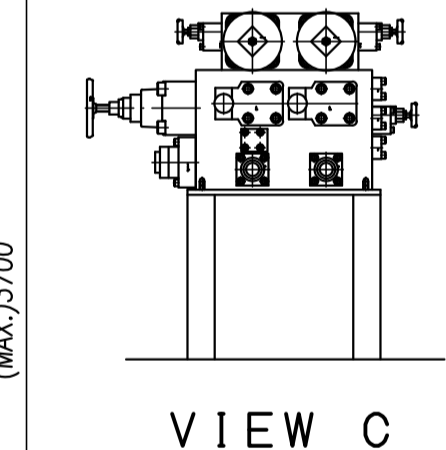
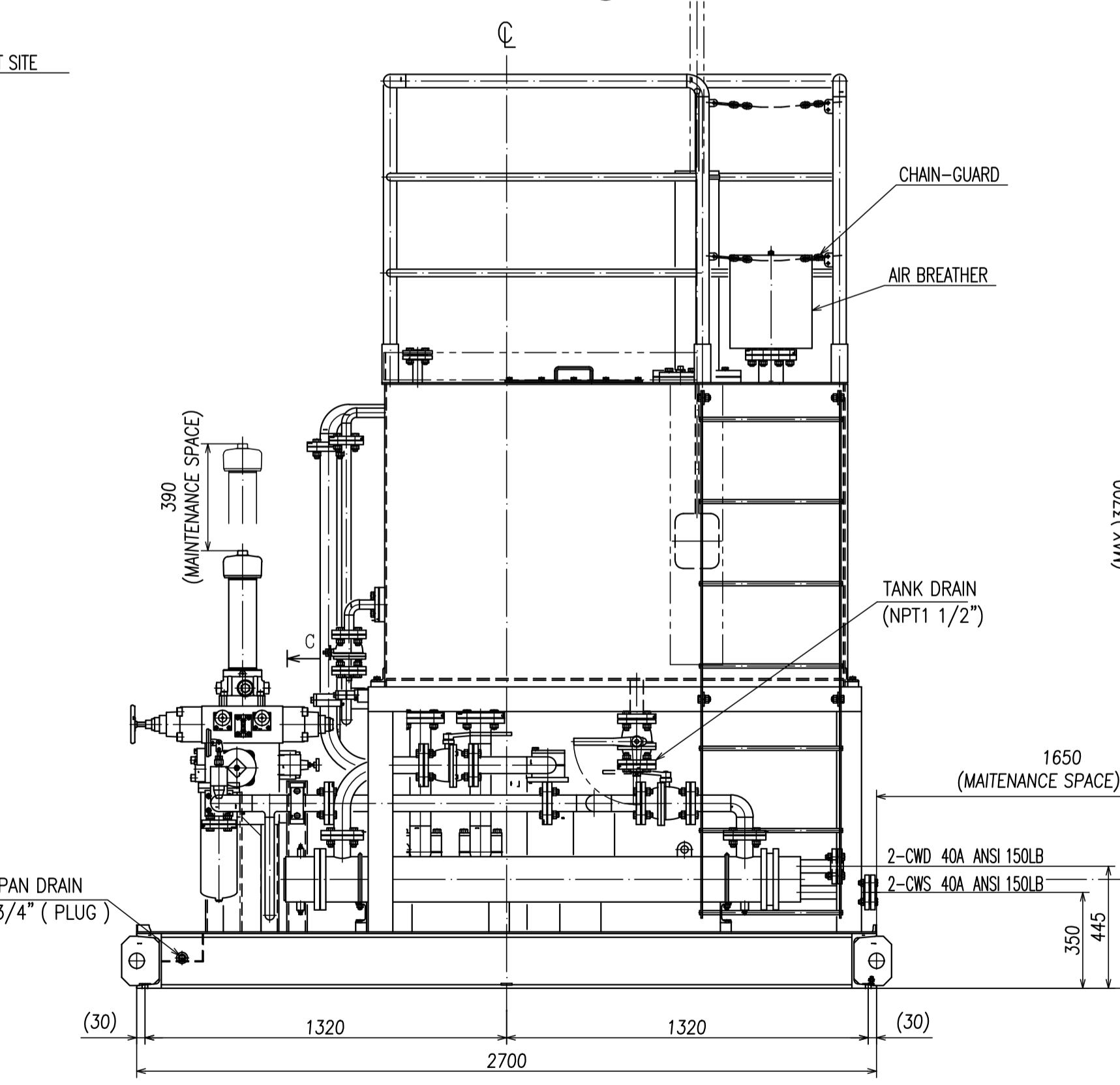
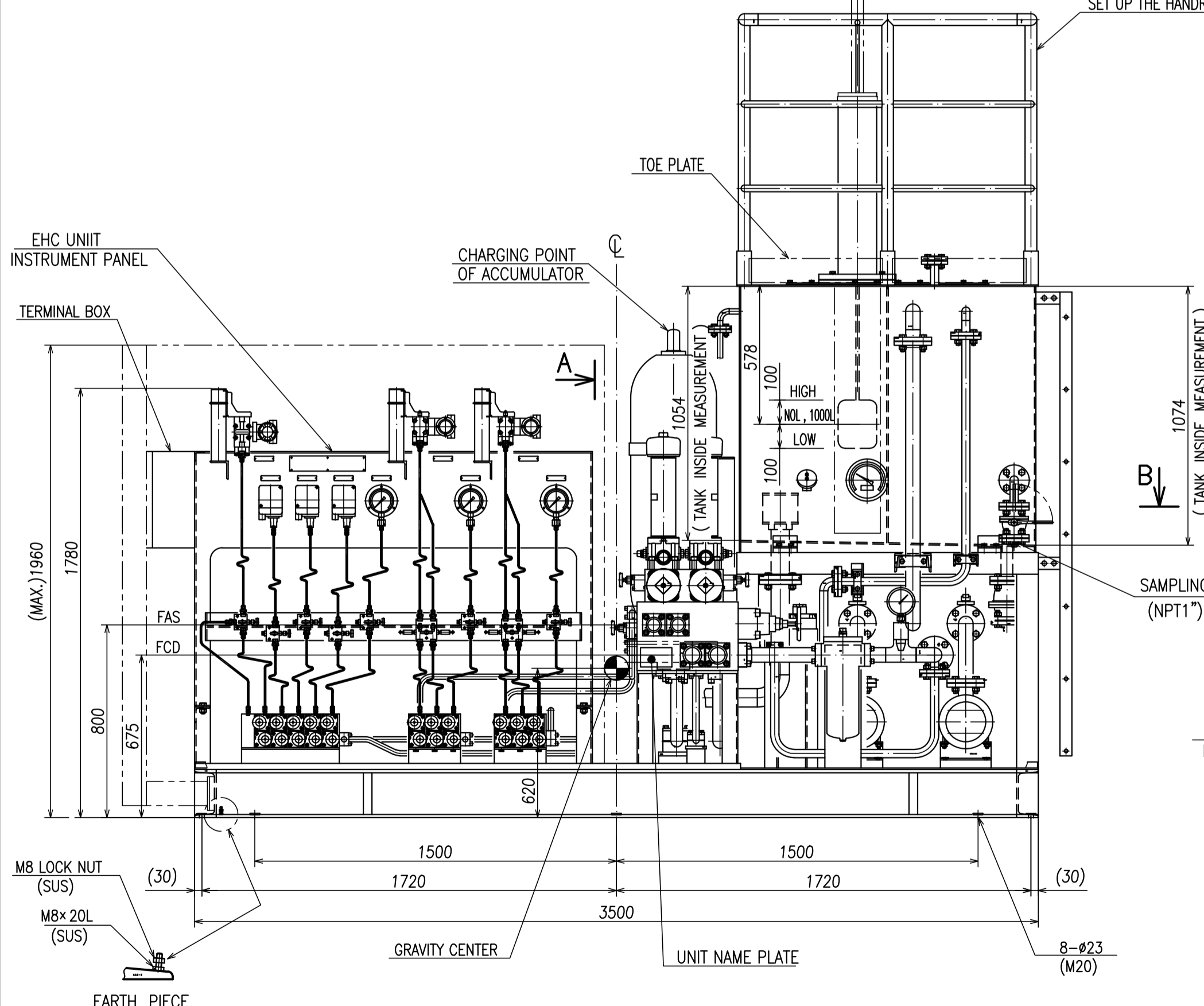
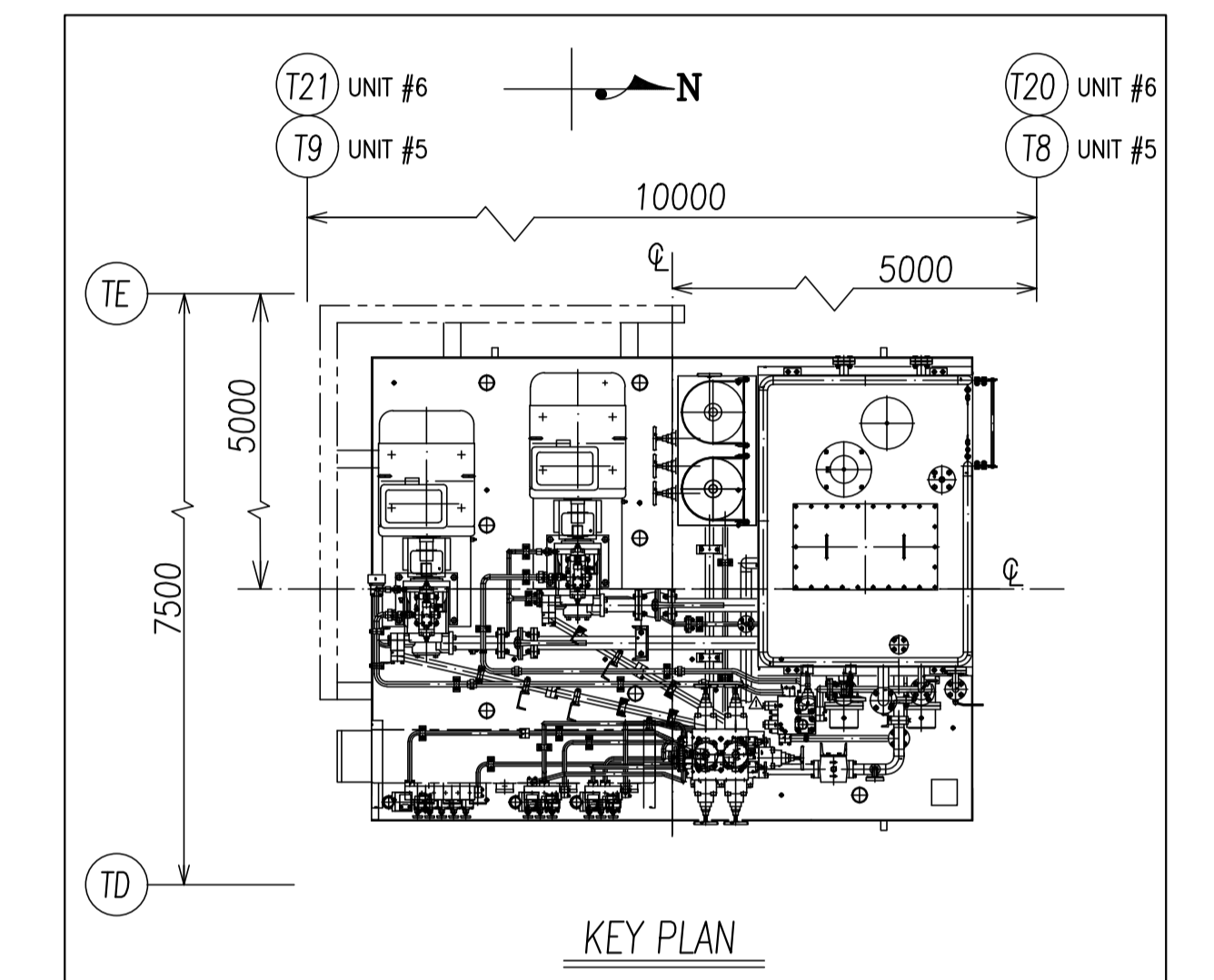
NOZZLE TABLE

MARK	SIZE	STANDARD	MATERIALS	REMARK
FAS1,FAS2	40A	SPECIAL (ESSA-40A)	SUS304(ASTM A312 TP304)	HYDRAULIC FLUID ACTUATOR SUPPLY
FCD1,FCD2	50A	SPECIAL (ESSA-50A)	SUS304(ASTM A312 TP304)	HYDRAULIC FLUID DRAIN TO RESERVOIR
CWS1,CWS2	40A	ANIS 150LB RF	SS400(ASTM A283 Gr.D)	SERVICE WATER SUPPLY
CWD1,CWD2	40A	ANIS 150LB RF	SS400(ASTM A283 Gr.D)	SERVICE WATER DRAIN



SYMBOL  
 FAS : HYDRAULIC OIL SUPPLY  
 FCD : HYDRAULIC OIL DRAIN  
 CWS : SERVICE WATER SUPPLY  
 CWD : SERVICE WATER DRAIN

SPECIFICATION  
 WORK PRESS. : HYDRAULIC FLUID PUMP 16.5MPa  
 SELF WEIGHT : APPROX. 8000kg  
 OPERATING WEIGHT : APPROX. 9000kg  
 Reference Drawing  
 Piping and Instrument Diagram for Steam Turbine Electro Hydraulic Control Oil Unit  
 TJB56-L1-OFF-C-MAX-M-PID-2124 (1KT004177)  
 Foundation Outline for Electro-Hydraulic Control Oil Unit  
 TJB56-L1-OFF-C-MAX-C-DFN-3035 (2KT119534)  
 THIS DRAWING SHOWS KKS NUMBER FOR UNIT 5 ONLY  
 FOR UNIT 6 REPLACE TOTAL PLANT CODE (50) WITH "60"



EQUIPMENT NAME	KKS NUMBER	SPECIFICATION
EHC OIL TANK	50MAX10BB001	2000 L
EHC OIL PUMP A	50MAX21AP001	160 L/min 165 bar(g)
EHC OIL PUMP B	50MAX22AP001	160 L/min 165 bar(g)
EHC OIL SUPPLY LINE FILTER A	50MAX21AT001	Filtration capacity #5(c) ≥ 1000
EHC OIL SUPPLY LINE FILTER B	50MAX22AT001	Filtration capacity #5(c) ≥ 1000
EHC OIL RETURN LINE FILTER	50MAX40AT001	Mesh size 10 μm
EHC OIL COOLER A	50MAX41AC001	TYPE : Shell & tube
EHC OIL COOLER B	50MAX42AC001	TYPE : Shell & tube
EHC OIL ACCUMULATOR A	50MAX30BB001	75 L, Bladder type
EHC OIL ACCUMULATOR B	50MAX30BB002	75 L, Bladder type

ISSUED FOR AS-BUILT

REV	DATE	DESCRIPTION	BY	CHK	APP
2	JAN 25 '22	FOR AS-BUILT	T.Y.	S.W.	S.W.
1	SEP 26 '19	REVISED AS PER DESIGN PROGRESS	T.Y.	R.I.	Y.N.
0	AUG 27 '19	ISSUE FOR CONSTRUCTION	T.Y.	R.I.	Y.N.

OWNER: PT. Bumi Jati Power  
 PROJECT TITLE: TANJUNG JATI B EXPANSION (JAWA-4) COAL FIRED STEAM POWER PLANT 2 x 1,000 MW  
 OWNER'S ENGINEER: POYRY  
 EPC CONTRACTORS: Sumitomo Corporation, PT. Wasa Mitra Engineering, AvantiPower Japan Ltd.  
 PROJECT DRAWING NO.: TJB56-L1-OFF-C-MAX-H-DRD-2647  
 REV: 2

The information in this material is confidential and contains our intellectual property including know-how. It shall not be disclosed to any third party, copied, reproduced, used for unauthorized purposes nor modified without prior written consent of us. And please get them back this document after you have done with it.  
 Toshiba Energy Systems & Solutions Corporation  
 Kelhin Product Operations

DRS-A015445	DRS-G014675	DRS-A014620	DRS-G014376	DRS-G014355	DRS-G014020	NDS-G515898
S. Watanabe JUN-31-'22	Y. Nakamura SEP-26-'19	Y. Nakamura AUG-27-'19	Y. Kono MAR-05-'19	Y. Kono FEB-20-'19	Y. Nakamura AUG-24-'18	承認 APPROVED BY
S. Watanabe JUN-31-'22	R. Iwasaki SEP-26-'19	R. Iwasaki AUG-27-'19	Y. Kono MAR-05-'19	S. Horii FEB-20-'19	Y. Nakamura AUG-24-'18	調査 REVIEWED BY
T. Tsunekawa JUN-28-'22	T. Yamamoto SEP-26-'19	T. Yamamoto AUG-27-'19	S. Ozawa MAR-04-'19	S. Ozawa FEB-20-'19	T. Nakajima AUG-24-'18	調査 REVIEWED BY
G-1	F-1	XIT05	E-1	XIT05	D-1	XIT05
For AS-BUILT	REVISED AS PER DESIGN PROGRESS	ISSUE FOR CONSTRUCTION	REVISED AS PER DESIGN PROGRESS	REVISED AS PER DESIGN PROGRESS	REVISED AS PER DESIGN PROGRESS	REVISED AS PER CUSTOMER'S COMMENT.

TOSHIBA 東芝エネルギーシステムズ株式会社  
 TOSHIBA ENERGY SYSTEMS & SOLUTIONS CORPORATION

名義 TITLE Outline Drawing for Electro-Hydraulic Controller Oil Unit  
 必要 SCALE 1:18  
 単位 UNITS mm  
 図面番号 DRAWING NO. 1KT004226  
 図面番号 DRAWING NO. 1KT004226  
 電子承認システム適用