

VENTILATOR VALVE (SOMALU20) (SOMALU20)
 7-87 ~ 7-95

VENTILATOR VALVE (SOMALU20) (SOMALU20)

CLEARANCE TABLE

| MARK | HOLE SIZE | SHAFT SIZE | CLEARANCE |
|------|-------------------------|-------------------------|-----------------|
| Ⓐ | BUSH (1) | PISTON ROD (1) | C = 0.05 - 0.15 |
| Ⓐ | Ø 8.10 ^{±0.01} | Ø 8.15 ^{±0.02} | |
| Ⓐ | BUSH (2) | VALVE STEM (2) | C = 0.15 - 0.30 |
| Ⓐ | Ø 5.4 ^{±0.01} | Ø 5.15 ^{±0.02} | |
| Ⓐ | BUSH (3) | VALVE DISC (3) | C = 0.14 - 0.29 |
| Ⓐ | Ø 5.73 ^{±0.01} | Ø 5.65 ^{±0.02} | |

ROTATING TORQUE TABLE

| FIG. | SIZE | ROTATING TORQUE (kg) |
|------|------|----------------------|
| (10) | M12 | 51 Nm |
| (45) | M20 | 247.0 Nm |
| (55) | M20 | 170.5 Nm |
| (77) | M20 | 170.5 Nm |
| (39) | M8 | 2.8 Nm |
| (44) | M8 | 2.8 Nm |

DESIGN DATA

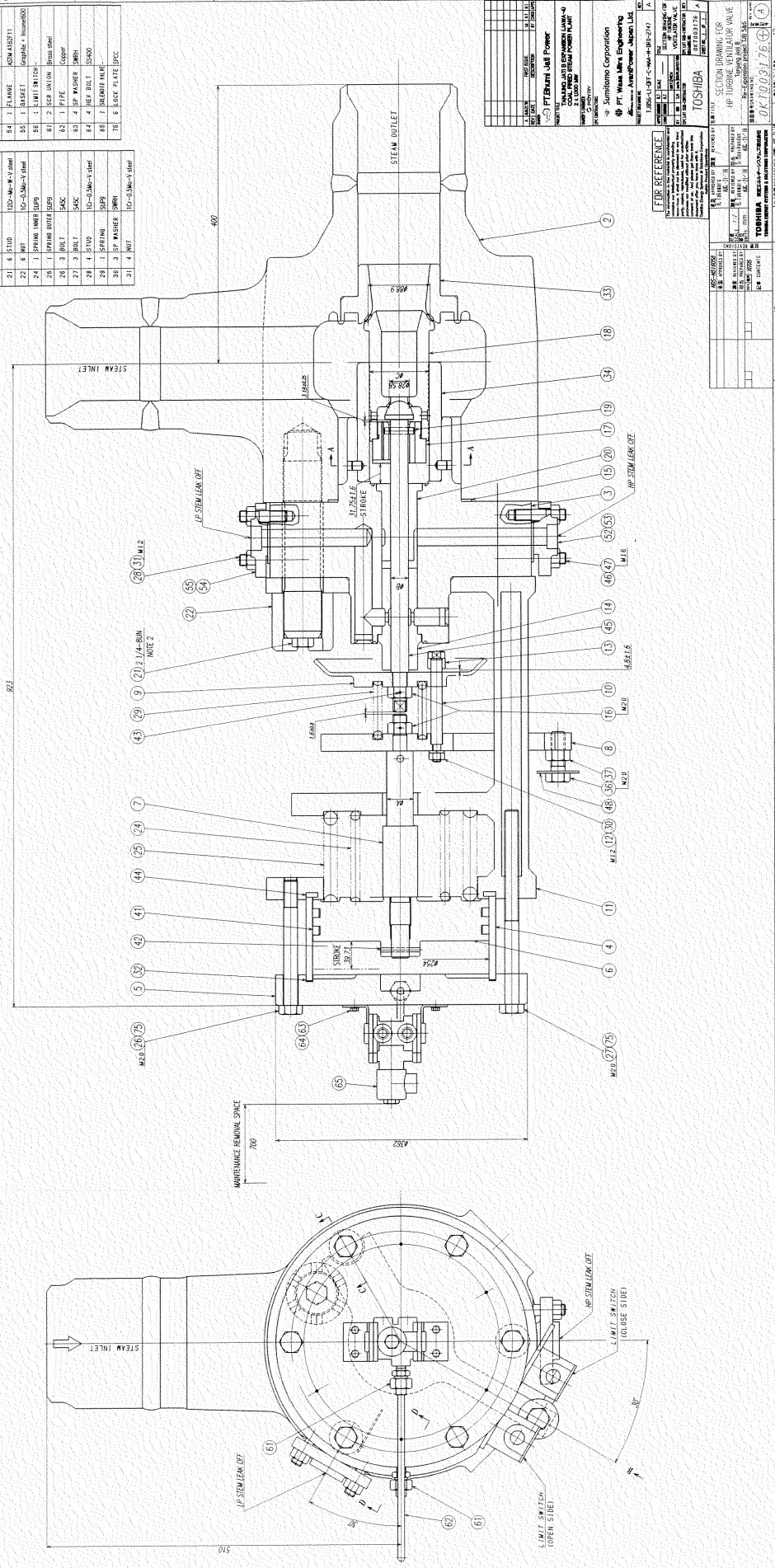
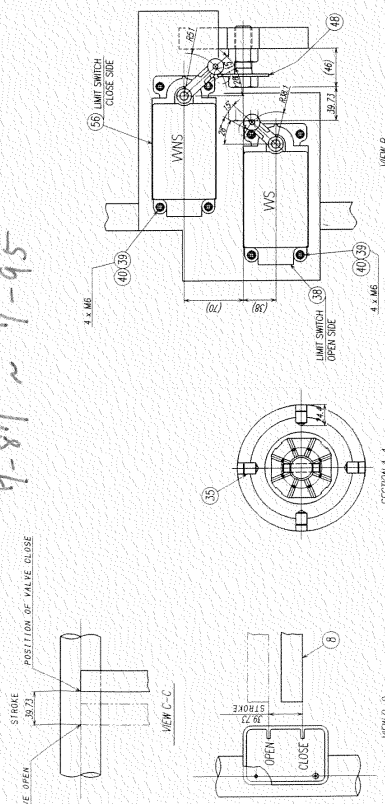
- DESIGN PRESSURE : 7.5 bar(g)
- DESIGN TEMPERATURE : 427 °C
- HYDROSTATIC PRESSURE : 117 bar(g)

PART LIST

| P.N. & P.T. | REF. MARK | WORK | P.N. & P.T. | NAME | WORK | |
|-------------|-----------|------------|-------------|------|---------------|---------------------|
| 21 | 1 | CASING | 22 | 1 | BARRET | VALUIN HS 6500 |
| 3 | 1 | UPPER HEAD | 23 | 1 | VALVE BEARING | 120-C-156-W-1 steel |
| 4 | 1 | VALVE STEM | 24 | 1 | BUSHING | SUMIKAS |
| 5 | 1 | VALVE DISC | 25 | 2 | BOLTS | SAC |
| 6 | 1 | PISTON ROD | 26 | 2 | BOLTS | SAC |
| 7 | 1 | PISTON ROD | 27 | 2 | BOLTS | SAC |
| 8 | 1 | PISTON ROD | 28 | 2 | BOLTS | SAC |
| 9 | 1 | PISTON ROD | 29 | 2 | BOLTS | SAC |
| 10 | 1 | PISTON ROD | 30 | 2 | BOLTS | SAC |
| 11 | 1 | PISTON ROD | 31 | 2 | BOLTS | SAC |
| 12 | 1 | PISTON ROD | 32 | 2 | BOLTS | SAC |
| 13 | 1 | PISTON ROD | 33 | 2 | BOLTS | SAC |
| 14 | 1 | PISTON ROD | 34 | 2 | BOLTS | SAC |
| 15 | 1 | PISTON ROD | 35 | 2 | BOLTS | SAC |
| 16 | 1 | PISTON ROD | 36 | 2 | BOLTS | SAC |
| 17 | 1 | PISTON ROD | 37 | 2 | BOLTS | SAC |
| 18 | 1 | PISTON ROD | 38 | 2 | BOLTS | SAC |
| 19 | 1 | PISTON ROD | 39 | 2 | BOLTS | SAC |
| 20 | 1 | PISTON ROD | 40 | 2 | BOLTS | SAC |
| 21 | 1 | PISTON ROD | 41 | 2 | BOLTS | SAC |
| 22 | 1 | PISTON ROD | 42 | 2 | BOLTS | SAC |
| 23 | 1 | PISTON ROD | 43 | 2 | BOLTS | SAC |
| 24 | 1 | PISTON ROD | 44 | 2 | BOLTS | SAC |
| 25 | 1 | PISTON ROD | 45 | 2 | BOLTS | SAC |
| 26 | 1 | PISTON ROD | 46 | 2 | BOLTS | SAC |
| 27 | 1 | PISTON ROD | 47 | 2 | BOLTS | SAC |
| 28 | 1 | PISTON ROD | 48 | 2 | BOLTS | SAC |
| 29 | 1 | PISTON ROD | 49 | 2 | BOLTS | SAC |
| 30 | 1 | PISTON ROD | 50 | 2 | BOLTS | SAC |
| 31 | 1 | PISTON ROD | 51 | 2 | BOLTS | SAC |
| 32 | 1 | PISTON ROD | 52 | 2 | BOLTS | SAC |
| 33 | 1 | PISTON ROD | 53 | 2 | BOLTS | SAC |
| 34 | 1 | PISTON ROD | 54 | 2 | BOLTS | SAC |
| 35 | 1 | PISTON ROD | 55 | 2 | BOLTS | SAC |
| 36 | 1 | PISTON ROD | 56 | 2 | BOLTS | SAC |
| 37 | 1 | PISTON ROD | 57 | 2 | BOLTS | SAC |
| 38 | 1 | PISTON ROD | 58 | 2 | BOLTS | SAC |
| 39 | 1 | PISTON ROD | 59 | 2 | BOLTS | SAC |
| 40 | 1 | PISTON ROD | 60 | 2 | BOLTS | SAC |
| 41 | 1 | PISTON ROD | 61 | 2 | BOLTS | SAC |
| 42 | 1 | PISTON ROD | 62 | 2 | BOLTS | SAC |
| 43 | 1 | PISTON ROD | 63 | 2 | BOLTS | SAC |
| 44 | 1 | PISTON ROD | 64 | 2 | BOLTS | SAC |
| 45 | 1 | PISTON ROD | 65 | 2 | BOLTS | SAC |
| 46 | 1 | PISTON ROD | 66 | 2 | BOLTS | SAC |
| 47 | 1 | PISTON ROD | 67 | 2 | BOLTS | SAC |
| 48 | 1 | PISTON ROD | 68 | 2 | BOLTS | SAC |
| 49 | 1 | PISTON ROD | 69 | 2 | BOLTS | SAC |
| 50 | 1 | PISTON ROD | 70 | 2 | BOLTS | SAC |
| 51 | 1 | PISTON ROD | 71 | 2 | BOLTS | SAC |
| 52 | 1 | PISTON ROD | 72 | 2 | BOLTS | SAC |
| 53 | 1 | PISTON ROD | 73 | 2 | BOLTS | SAC |
| 54 | 1 | PISTON ROD | 74 | 2 | BOLTS | SAC |
| 55 | 1 | PISTON ROD | 75 | 2 | BOLTS | SAC |
| 56 | 1 | PISTON ROD | 76 | 2 | BOLTS | SAC |
| 57 | 1 | PISTON ROD | 77 | 2 | BOLTS | SAC |
| 58 | 1 | PISTON ROD | 78 | 2 | BOLTS | SAC |
| 59 | 1 | PISTON ROD | 79 | 2 | BOLTS | SAC |
| 60 | 1 | PISTON ROD | 80 | 2 | BOLTS | SAC |
| 61 | 1 | PISTON ROD | 81 | 2 | BOLTS | SAC |
| 62 | 1 | PISTON ROD | 82 | 2 | BOLTS | SAC |
| 63 | 1 | PISTON ROD | 83 | 2 | BOLTS | SAC |
| 64 | 1 | PISTON ROD | 84 | 2 | BOLTS | SAC |
| 65 | 1 | PISTON ROD | 85 | 2 | BOLTS | SAC |
| 66 | 1 | PISTON ROD | 86 | 2 | BOLTS | SAC |
| 67 | 1 | PISTON ROD | 87 | 2 | BOLTS | SAC |
| 68 | 1 | PISTON ROD | 88 | 2 | BOLTS | SAC |
| 69 | 1 | PISTON ROD | 89 | 2 | BOLTS | SAC |
| 70 | 1 | PISTON ROD | 90 | 2 | BOLTS | SAC |
| 71 | 1 | PISTON ROD | 91 | 2 | BOLTS | SAC |
| 72 | 1 | PISTON ROD | 92 | 2 | BOLTS | SAC |
| 73 | 1 | PISTON ROD | 93 | 2 | BOLTS | SAC |
| 74 | 1 | PISTON ROD | 94 | 2 | BOLTS | SAC |
| 75 | 1 | PISTON ROD | 95 | 2 | BOLTS | SAC |
| 76 | 1 | PISTON ROD | 96 | 2 | BOLTS | SAC |
| 77 | 1 | PISTON ROD | 97 | 2 | BOLTS | SAC |
| 78 | 1 | PISTON ROD | 98 | 2 | BOLTS | SAC |
| 79 | 1 | PISTON ROD | 99 | 2 | BOLTS | SAC |
| 80 | 1 | PISTON ROD | 100 | 2 | BOLTS | SAC |

- Notes:
- The specified torque must be reached in at least two passes and sequentially tightened.
 - Stroke requires tightening extension of 0.11mm to 0.15mm.
 - Stroke (2) and (22) are fastened by bolt heater. Others are fastened by torque wrench.
 - Reference Drawing: OUTLINE DRAWING FOR VALVE: TABS-L1-OFF-C-MA-M-GRD-2886 (INT000409)

WEIGHT: 700kg (approx.)



DESIGN REFERENCE

| FIG. | SIZE | ROTATING TORQUE (kg) |
|------|------|----------------------|
| (10) | M12 | 51 Nm |
| (45) | M20 | 247.0 Nm |
| (55) | M20 | 170.5 Nm |
| (77) | M20 | 170.5 Nm |
| (39) | M8 | 2.8 Nm |
| (44) | M8 | 2.8 Nm |

Sumitomo Corporation
 1-1-1, Higashi-Araji, Higashi-ku, Osaka, Japan
 TEL: 06-6541-1111
 FAX: 06-6541-1112
 E-MAIL: info@sumitomo.com

TOSHIBA
 1-1-1, Higashi-Araji, Higashi-ku, Osaka, Japan
 TEL: 06-6541-1111
 FAX: 06-6541-1112
 E-MAIL: info@toshiba.com

SECTION DRAWING FOR
 HP TURBINE VALVE
 1-1-1, Higashi-Araji, Higashi-ku, Osaka, Japan
 TEL: 06-6541-1111
 FAX: 06-6541-1112
 E-MAIL: info@sumitomo.com

TOSHIBA
 1-1-1, Higashi-Araji, Higashi-ku, Osaka, Japan
 TEL: 06-6541-1111
 FAX: 06-6541-1112
 E-MAIL: info@toshiba.com

SECTION DRAWING FOR
 HP TURBINE VALVE
 1-1-1, Higashi-Araji, Higashi-ku, Osaka, Japan
 TEL: 06-6541-1111
 FAX: 06-6541-1112
 E-MAIL: info@sumitomo.com

TOSHIBA
 1-1-1, Higashi-Araji, Higashi-ku, Osaka, Japan
 TEL: 06-6541-1111
 FAX: 06-6541-1112
 E-MAIL: info@toshiba.com

SECTION DRAWING FOR
 HP TURBINE VALVE
 1-1-1, Higashi-Araji, Higashi-ku, Osaka, Japan
 TEL: 06-6541-1111
 FAX: 06-6541-1112
 E-MAIL: info@sumitomo.com