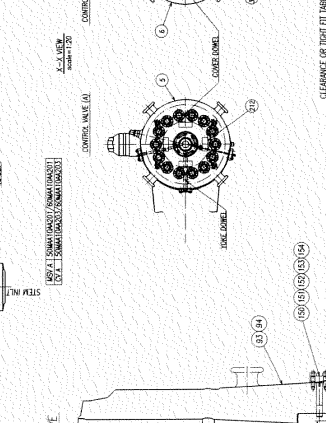
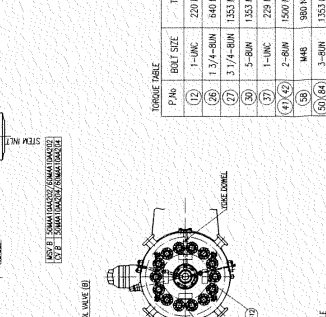
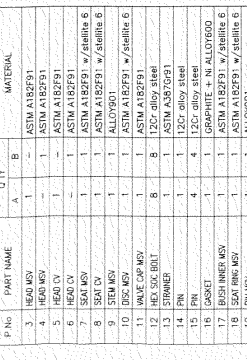
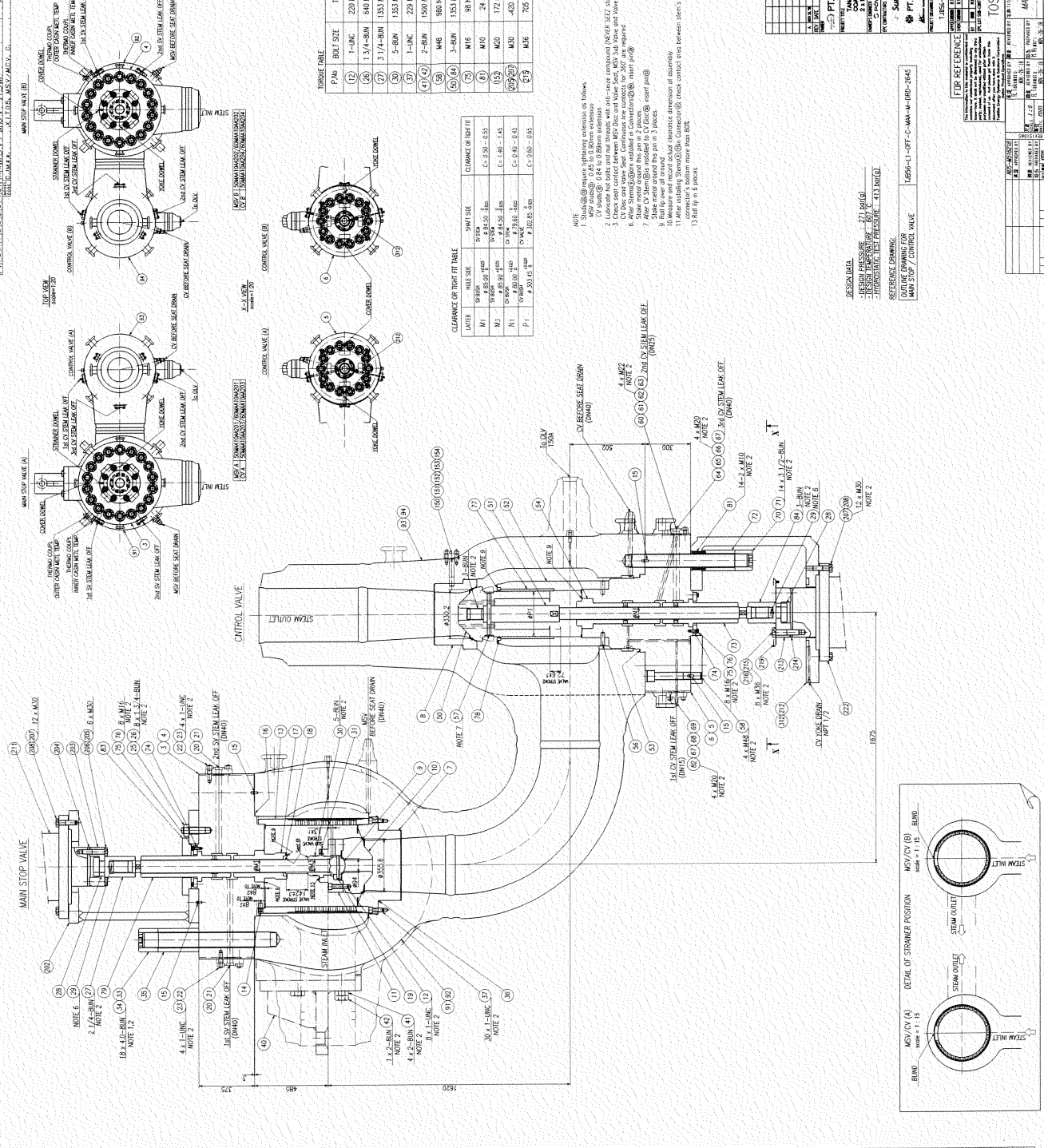


7-1 ~ 7-45

P No	PART NAME	QTY	MATERIAL	
			A	B
3	HEAD MOV	1	ASTM A182F03	
4	HEAD MOV	1	ASTM A182F01	
5	HEAD CV	1	ASTM A182F01	
6	HEAD CV	1	ASTM A182F01	
7	SEAL CV	1	ASTM A182F01 w/Alabrite 6	
8	SEAL CV	1	ALLOY718	
9	SEAL CV	1	ALLOY718	
10	MAIN STOP VALVE	1	ASTM A182F01 w/Alabrite 6	
11	MAIN STOP VALVE	1	ALLOY718	
12	HEX SCG BOLT	8	12C alloy steel	
13	STRAINER	1	ASTM A387G019	
14	FLANGE	1	12C alloy steel	
15	FLANGE	4	12C alloy steel	
16	GRAPHITE IN ALLOY80	1	GRAPHITE # N ALLOY80	
17	SEAL RING MOV	1	ASTM A182F01 w/Alabrite 6	
18	SEAL RING MOV	1	ALLOY901	
19	PN MOV	1	ASTM A182F01	
20	FLANGE MOV LEAKOFF	2	ASTM A182F01	
21	FLANGE MOV LEAKOFF	2	GRAPHITE # N ALLOY80	
22	STUD LEAKOFF	8	12C alloy steel	
23	STUD	8	12C alloy steel	
24	HEX NUT	8	12C alloy steel	
25	HEX NUT	8	12C alloy steel	
26	CONNECTOR SV	1	1CMOV alloy steel	
27	CONNECTOR SV	1	1CMOV alloy steel	
28	NET	2	5455	
29	PN	2	1CMOV alloy steel	
30	DISC BUSH	1	ALLOY901	
31	STUD	18	ALLOY718	
32	STUD	18	18C alloy steel	
33	COLLAR	18	18C alloy steel	
34	COLLAR	18	18C alloy steel	
35	COLLAR	18	18C alloy steel	
36	COLLAR	18	18C alloy steel	
37	HEX SCG BOLT	30	12C alloy steel	
38	HEX SCG BOLT	30	12C alloy steel	
39	HEX SCG BOLT	4	12C alloy steel	
40	BRACKET	1	ASTM A387G22	
41	HEX BOLT	1	12C alloy steel	
42	HEX BOLT	1	12C alloy steel	
43	HEX BOLT	1	12C alloy steel	
44	HEX BOLT	1	12C alloy steel	
45	HEX BOLT	1	12C alloy steel	
46	HEX BOLT	1	12C alloy steel	
47	HEX BOLT	1	12C alloy steel	
48	HEX BOLT	1	12C alloy steel	
49	HEX BOLT	1	12C alloy steel	
50	HEX BOLT	1	12C alloy steel	
51	HEX BOLT	1	12C alloy steel	
52	HEX BOLT	1	12C alloy steel	
53	HEX BOLT	1	12C alloy steel	
54	HEX BOLT	1	12C alloy steel	
55	HEX BOLT	1	12C alloy steel	
56	HEX BOLT	1	12C alloy steel	
57	HEX BOLT	1	12C alloy steel	
58	HEX SCG BOLT	4	1CMOV alloy steel	
59	FLANGE	4	ASTM A182F01	
60	FLANGE	4	1CMOV alloy steel	
61	FLANGE	4	GRAPHITE # N ALLOY80	
62	STUD	4	12C alloy steel	
63	HEX NUT	4	12C alloy steel	
64	HEX NUT	4	12C alloy steel	
65	HEX NUT	4	12C alloy steel	
66	HEX NUT	4	12C alloy steel	
67	HEX NUT	4	12C alloy steel	
68	HEX NUT	4	12C alloy steel	
69	HEX NUT	4	12C alloy steel	
70	STUD	14	ALLOY718	
71	STUD	14	18C alloy steel	
72	COLLAR	14	18C alloy steel	
73	BUSSING CV OUTER	2	ASTM A387G22	
74	REINER	2	ASTM A387G22	
75	HEX BOLT	16	12C alloy steel	
76	HEX BOLT	16	12C alloy steel	
77	SELEX BUSH	1	SUS310	
78	SELEX BUSH	1	ALLOY901	
79	SELEX BUSH	1	ASTM A182F01	
80	SELEX BUSH	1	1CMOV alloy steel	
81	HEX SCG BOLT	28	28	1CMOV alloy steel
82	STUD	4	12C alloy steel	
83	INSULATOR RING	1	SUS304 + GLASS FELT	
84	CONNECTOR CV	1	1CMOV alloy steel	
85	MOV ACTUATOR	1	100MVAWAB020 alloy steel	
86	MOV ACTUATOR	1	100MVAWAB020 alloy steel	
87	MOV ACTUATOR	1	100MVAWAB020 alloy steel	
88	MOV ACTUATOR	1	100MVAWAB020 alloy steel	
89	MOV ACTUATOR	1	100MVAWAB020 alloy steel	
90	MOV ACTUATOR	1	100MVAWAB020 alloy steel	
91	MOV ACTUATOR	1	100MVAWAB020 alloy steel	
92	MOV ACTUATOR	1	100MVAWAB020 alloy steel	
93	MOV ACTUATOR	1	100MVAWAB020 alloy steel	
94	MOV ACTUATOR	1	100MVAWAB020 alloy steel	
95	MOV ACTUATOR	1	100MVAWAB020 alloy steel	
96	MOV ACTUATOR	1	100MVAWAB020 alloy steel	
97	MOV ACTUATOR	1	100MVAWAB020 alloy steel	
98	MOV ACTUATOR	1	100MVAWAB020 alloy steel	
99	MOV ACTUATOR	1	100MVAWAB020 alloy steel	
100	MOV ACTUATOR	1	100MVAWAB020 alloy steel	



1. Shaft (S) requires tightening reference as follows.
 2. Lockwash and nuts and flat washers with anti-rust compound (NEVER SELECT stainless steel grade).
 3. Check seat contact between MOV disc and Valve Seat. Use Valve Seat. Use Valve and Valve Cap.
 4. After Steam Stop Valve is installed in MOV, insert O-ring.
 5. After O-ring is installed in CV, insert O-ring.
 6. Slide meter around the pin in 3 places.
 7. Measure and record actual clearance dimension of assembly.
 8. After assembly is complete, check contact area between stem and pin.
 9. After assembly is complete, check contact area between stem and pin.
 10. After assembly is complete, check contact area between stem and pin.
 11. After assembly is complete, check contact area between stem and pin.
 12. After assembly is complete, check contact area between stem and pin.
 13. After assembly is complete, check contact area between stem and pin.

DESIGN DATA	
DESIGN PRESSURE	2.1 MPa (300 PSI)
DESIGN TEMPERATURE	350°C (662°F)
OPERATING PRESSURE	1.5 MPa (217 PSI)
OPERATING TEMPERATURE	350°C (662°F)

REFERENCE DRAWING	
OUTLINE DRAWING FOR MAIN STOP / CONTROL VALVE	1056-11-01T-C-MA-M-100-204

FOR REFERENCE	
ITEM NO.	DESCRIPTION
1	MAIN STOP VALVE
2	CONTROL VALVE
3	STEAM STOP VALVE
4	STEAM STOP VALVE
5	STEAM STOP VALVE
6	STEAM STOP VALVE
7	STEAM STOP VALVE
8	STEAM STOP VALVE
9	STEAM STOP VALVE
10	STEAM STOP VALVE
11	STEAM STOP VALVE
12	STEAM STOP VALVE
13	STEAM STOP VALVE
14	STEAM STOP VALVE
15	STEAM STOP VALVE
16	STEAM STOP VALVE
17	STEAM STOP VALVE
18	STEAM STOP VALVE
19	STEAM STOP VALVE
20	STEAM STOP VALVE
21	STEAM STOP VALVE
22	STEAM STOP VALVE
23	STEAM STOP VALVE
24	STEAM STOP VALVE
25	STEAM STOP VALVE
26	STEAM STOP VALVE
27	STEAM STOP VALVE
28	STEAM STOP VALVE
29	STEAM STOP VALVE
30	STEAM STOP VALVE
31	STEAM STOP VALVE
32	STEAM STOP VALVE
33	STEAM STOP VALVE
34	STEAM STOP VALVE
35	STEAM STOP VALVE
36	STEAM STOP VALVE
37	STEAM STOP VALVE
38	STEAM STOP VALVE
39	STEAM STOP VALVE
40	STEAM STOP VALVE
41	STEAM STOP VALVE
42	STEAM STOP VALVE
43	STEAM STOP VALVE
44	STEAM STOP VALVE
45	STEAM STOP VALVE
46	STEAM STOP VALVE
47	STEAM STOP VALVE
48	STEAM STOP VALVE
49	STEAM STOP VALVE
50	STEAM STOP VALVE
51	STEAM STOP VALVE
52	STEAM STOP VALVE
53	STEAM STOP VALVE
54	STEAM STOP VALVE
55	STEAM STOP VALVE
56	STEAM STOP VALVE
57	STEAM STOP VALVE
58	STEAM STOP VALVE
59	STEAM STOP VALVE
60	STEAM STOP VALVE
61	STEAM STOP VALVE
62	STEAM STOP VALVE
63	STEAM STOP VALVE
64	STEAM STOP VALVE
65	STEAM STOP VALVE
66	STEAM STOP VALVE
67	STEAM STOP VALVE
68	STEAM STOP VALVE
69	STEAM STOP VALVE
70	STEAM STOP VALVE
71	STEAM STOP VALVE
72	STEAM STOP VALVE
73	STEAM STOP VALVE
74	STEAM STOP VALVE
75	STEAM STOP VALVE
76	STEAM STOP VALVE
77	STEAM STOP VALVE
78	STEAM STOP VALVE
79	STEAM STOP VALVE
80	STEAM STOP VALVE
81	STEAM STOP VALVE
82	STEAM STOP VALVE
83	STEAM STOP VALVE
84	STEAM STOP VALVE
85	STEAM STOP VALVE
86	STEAM STOP VALVE
87	STEAM STOP VALVE
88	STEAM STOP VALVE
89	STEAM STOP VALVE
90	STEAM STOP VALVE
91	STEAM STOP VALVE
92	STEAM STOP VALVE
93	STEAM STOP VALVE
94	STEAM STOP VALVE
95	STEAM STOP VALVE
96	STEAM STOP VALVE
97	STEAM STOP VALVE
98	STEAM STOP VALVE
99	STEAM STOP VALVE
100	STEAM STOP VALVE

