

SECTION DRAWING FOR HP HEATER B
TOSHIBA
1.KV009579

CONN.	DESCRIPTION	CONN. SIZE	CONN. TYPE	MATERIAL	REMARKS	ALLOWABLE FORCE (kN)	ALLOWABLE FORCE (kN) (L&E)
C-1	FEEDWATER INLET	DN800	B.W.	ASME SA260M Gr-2	Ø 630x1140	31410	47518
C-2	FEEDWATER OUTLET	DN800	B.W.	ASME SA260M Gr-2	Ø 630x1140	31410	47518
C-3	MANIFOLD	(460/370)	WITH COVER	ASME SA260M Gr-2	Ø 700	-	-
S-1	STEAM INLET	DN850	B.W.	ASME SA182M F11 C-12	Ø 484x188	10248	12426
S-2	DRAIN OUTLET	DN850	B.W.	ASME SA260M Gr-2	Ø 376x172	8971	6307
S-3	AIR OUTLET	DN100	B.W.	ASME SA260M Gr-2	Ø 137x130	1598	591
S-4	RELIEF VALVE CONN.	DN80	R.F.	ASME SA260M Gr-2	Ø 138x433	-	-
S-5	LEVEL TRANSMITTER CONN.	DN80	S.W.	ASME SA260M Gr-2	ASME B16.5, #1500	-	-
S-6	SHELL DRAIN CONN.	DN40	S.W.	ASME SA260M Gr-2	ASME B16.11, #6000	-	-
S-7	N2 SEAL CONN.	DN80	S.W.	ASME SA260M Gr-2	ASME B16.11, #6000	-	-
S-9	LEVEL INDICATOR CONN.	DN80	S.W.	ASME SA260M Gr-2	ASME B16.11, #6000	-	-

PART NO.	PART NAME	MATERIAL
①	CHANNEL HEAD PLATE	ASME SA260M Gr-2
②	TUBE SHEET	ASME SA260M Gr-2
③	SHELL/STEAM INLET PORTION	ASME SA307M Gr-11 Cl.2
④	SHELL HEAD PLATE	ASME SA516M Gr-485
⑤	TUBE	JIS S5400 OR EQUIV.
⑥	SUPPORT PLATE	JIS S5400 OR EQUIV.
⑦	PARTITION PLATE	JIS S5400 OR EQUIV.
⑧	MANIFOLD COVER	JIS S5504/ JIS S5504 OR EQUIV.
⑨	INSERT TUBE/ PLATE	JIS S5504 OR EQUIV.
⑩	VENT PIPE	JIS S5504 OR EQUIV.

MATERIAL	TUBE SPECIFICATION
ASME SA556M Gr-C2	Ø 15.88x12.0 mm
ASME SA556M Gr-C2	12.2 mm FROM 2ND TO 5TH ROW
ASME SA556M Gr-C2	12.0 mm FROM 6TH ROW
ASME SA556M Gr-C2	MEAN EFFECTIVE TUBE LENGTH 1754
ASME SA556M Gr-C2	NUMBER OF TUBES 1754
ASME SA556M Gr-C2	SURFACE AREA 1454m ²
ASME SA556M Gr-C2	ACCEPTABLE TUBE PLUG RATIO 5.0%

SHELL SIDE	TUBE SIDE
DESIGN PRESSURE 77.5 bar(g)	DESIGN PRESSURE 337 bar(g)
DESIGN TEMPERATURE 294 °C	DESIGN TEMPERATURE 294 °C
HYDROSTATIC TEST PRESS. 116.25 bar(g)	HYDROSTATIC TEST PRESS. 505.5 bar(g)
FEEDWATER TEST CELL YES	FEEDWATER TEST CELL YES
POST WELD HEAT TREATMENT YES	POST WELD HEAT TREATMENT YES
APPROX. CAPACITY 18.0m ³	APPROX. CAPACITY 4.7m ³
WARRANTY 2.0mm (Omn FOR TUBE)	WARRANTY 0 °C

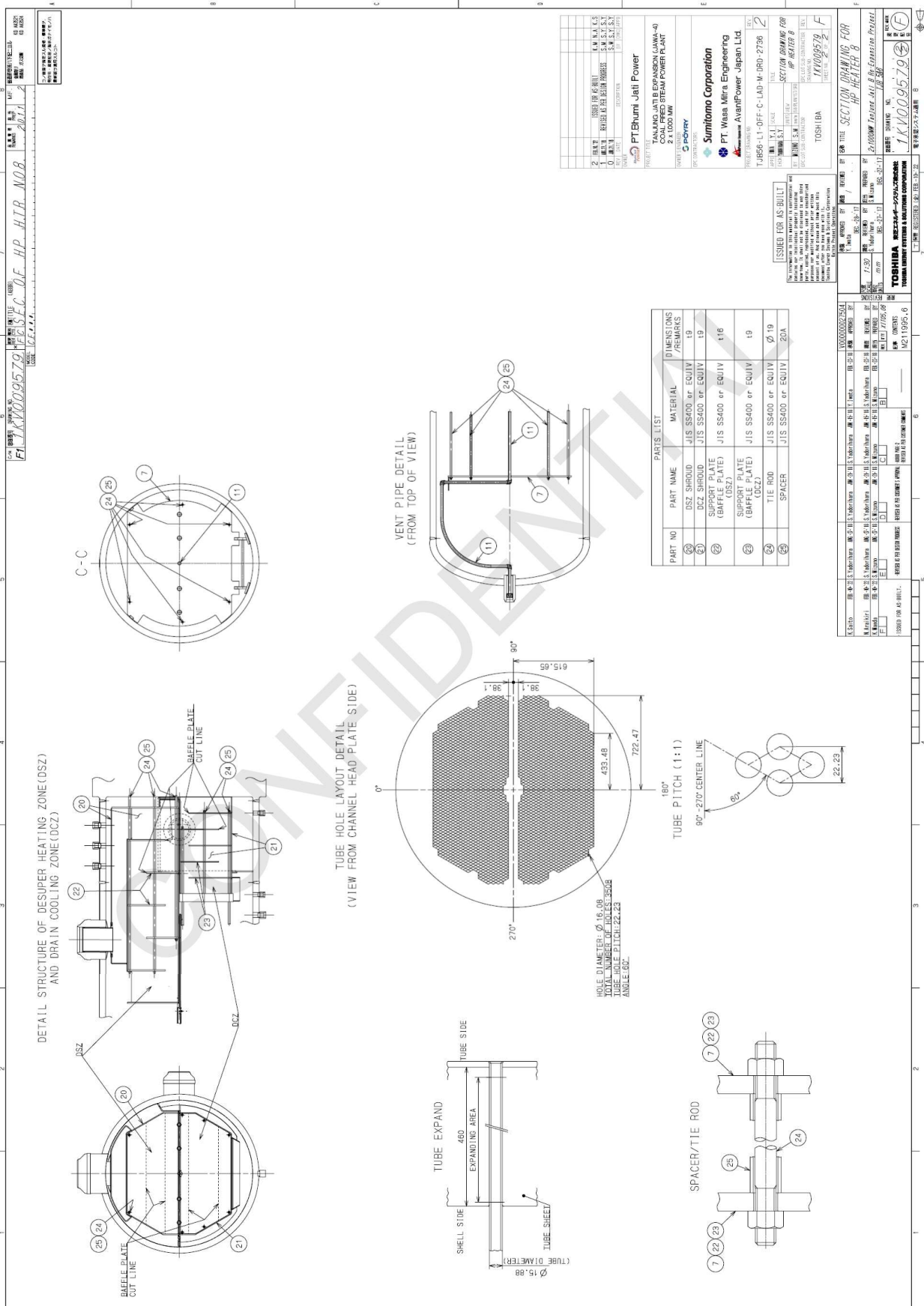
WEIGHTS
COMPLETE DRY (EMPTY LOAD) 88 TON
UNDER LOAD 106 TON
FLOODED (HYDROTEST LOAD) 121 TON
SEISMIC LOAD 106XTON

MANIFOLD COVER: 0.25 TON
 ** SEISMIC LOAD SHALL BE ASSUMED BY 0.14 X SEISMIC FACTOR

AKS COIFS
 HP HEATER BA HP HEATER BB
 UNITS ISOLA031 ACIO ISOLA032 ACIO
 UNITS ISOLA031 ACIO ISOLA032 ACIO

NOTES: 1. B.W. SHOWS BUTT WELDED CONNECTION.
 2. S.W. SHOWS SOCKET WELDED CONNECTION.
 3. R.F. SHOWS RAISED FACE FLANGE.
 4. R.F. SHOWS RAISED FACE FLANGE.
 5. APPLICABLE DESIGN CODE: JISASME SEC.XIII DIV.1.1, 2015 EDITION
 21 ITEM: TUBULAR EXCHANGER MANUFACTURERS
 6. BRACKET SHOWS THE DIMENSION DURING SHIP FABRICATION.
 7. N2 SEAL CONDITION DURING SHIPPING.
 8. JEM POINT OF 102-435-3-1

REFERENCE DRAWING: HP HEATER 8T-JB56-L1-OFF-C-LAD-M-DPD-2632/1KV009464
 2-FOUNDATION OUTLINE FOR HP HEATER 8T-JB56-L1-OFF-C-LAD-C-DRN-3023/1KV009789
 3-SIZING CALCULATION FOR LP AND HP HEATERS 8T-JB56-L1-OFF-C-LAD-M-CAL-2304/00K71723



Uncontrolled when printed or downloaded. Verify that this is the correct version before use.
 Reproduction of part or all the contents of the document is prohibited without written permission from PT. Bhumi Jepra Service