

LIST OF CONNECTIONS		REMARKS	ALLOWABLE FORCE (t.kgf)	ALLOWABLE MOMENT (t.kgf-m)
C-1	FEEDWATER INLET	Ø 50x1.40	3140	47518
C-2	FEEDWATER OUTLET	Ø 50x1.40	3140	47518
C-3	MANHOLE	Ø 700		
S-1	STEAM INLET	Ø 50x1.84	14572	20012
S-2	DRAIN INLET	Ø 30x1.80	9454	10319
S-3	DRAIN OUTLET	Ø 50x1.80	14572	20012
S-4	AIR OUTLET	Ø 127x1.25	1151	445
S-5	RELIEF VALVE CONN.	ASME B16.11, #6000		
S-6	LEVEL TRANSMITTER CONN.	ASME B16.11, #6000		
S-7	SHELL DRAIN CONN.	ASME B16.11, #6000		
S-8	N2 SEAL CONN.	ASME B16.11, #6000		
S-10	LEVEL INDICATOR CONN.	ASME B16.11, #6000		

TUBE SPECIFICATION		MATERIAL
Ø IS 89x12.0 mm	ASME SA326M Gr. C2	
OUT. D.I.A. THICKNESS	(12.4 mm 1ST ROW)	
	(12.0 mm FROM 2ND TO 5TH ROW)	
	(12.0 mm FROM 6TH ROW)	
MEAN EFFECTIVE TUBE LENGTH	16884.8 mm	
NUMBER OF TUBES	1754	
SURFACE AREA	1480m <sup>2</sup>	
ACCEPTABLE TUBE PLUG RATIO	5.0%	

MAIN PARTS LIST		MATERIAL
①	CHANNEL HEAD PLATE	ASME SA266M Gr. 2
②	TUBE SHEET	ASME SA266M Gr. 2
③	SHELL (SYSTEM INLET PORTION)	ASME SA266M Gr. 2
④	SHELL (SYSTEM OUTLET PORTION)	ASME SA266M Gr. 2
⑤	TUBE	ASME SA326M Gr. C2
⑥	SUPPORT PLATE	JIS S5400 OR EQUIV.
⑦	PARTITION PLATE (INNER MANHOLE)	JIS S5400 OR EQUIV.
⑧	MANHOLE COVER	ASME SA266M Gr. 2
⑨	INSERT FLOW GUIDE	JIS SUS304 OR EQUIV.
⑩	INSERT TUBE/PERFORATED PLATE (Gr. 11 OR EQUIV.)	JIS SUS304/ASME SA387M Gr. 11 OR EQUIV.
⑪	VENT TUBE	JIS SUS304 OR EQUIV.
⑫	PIPE	JIS SUS304 OR EQUIV.

SLOPING SECTION POINT		FL-17764
①	SLIDING SUPPORT <td>FIXED SUPPORT </td>	FIXED SUPPORT
②	SLIDING SUPPORT <td>FIXED SUPPORT </td>	FIXED SUPPORT

NOTE: THE SLOPE SHALL BE OBTAINED AND ADJUSTED BY LINERS UNDER BOTH FIXED AND SLIDING SUPPORTS.

WEIGHTS  
 COMPLETE DRY • 86 TON  
 (EMPTY LOAD)  
 95 TON  
 (NW. LOAD)  
 FLOODED (HYDROTEST LOAD) 110 TON  
 SEISMIC LOAD \*\* 95xTON

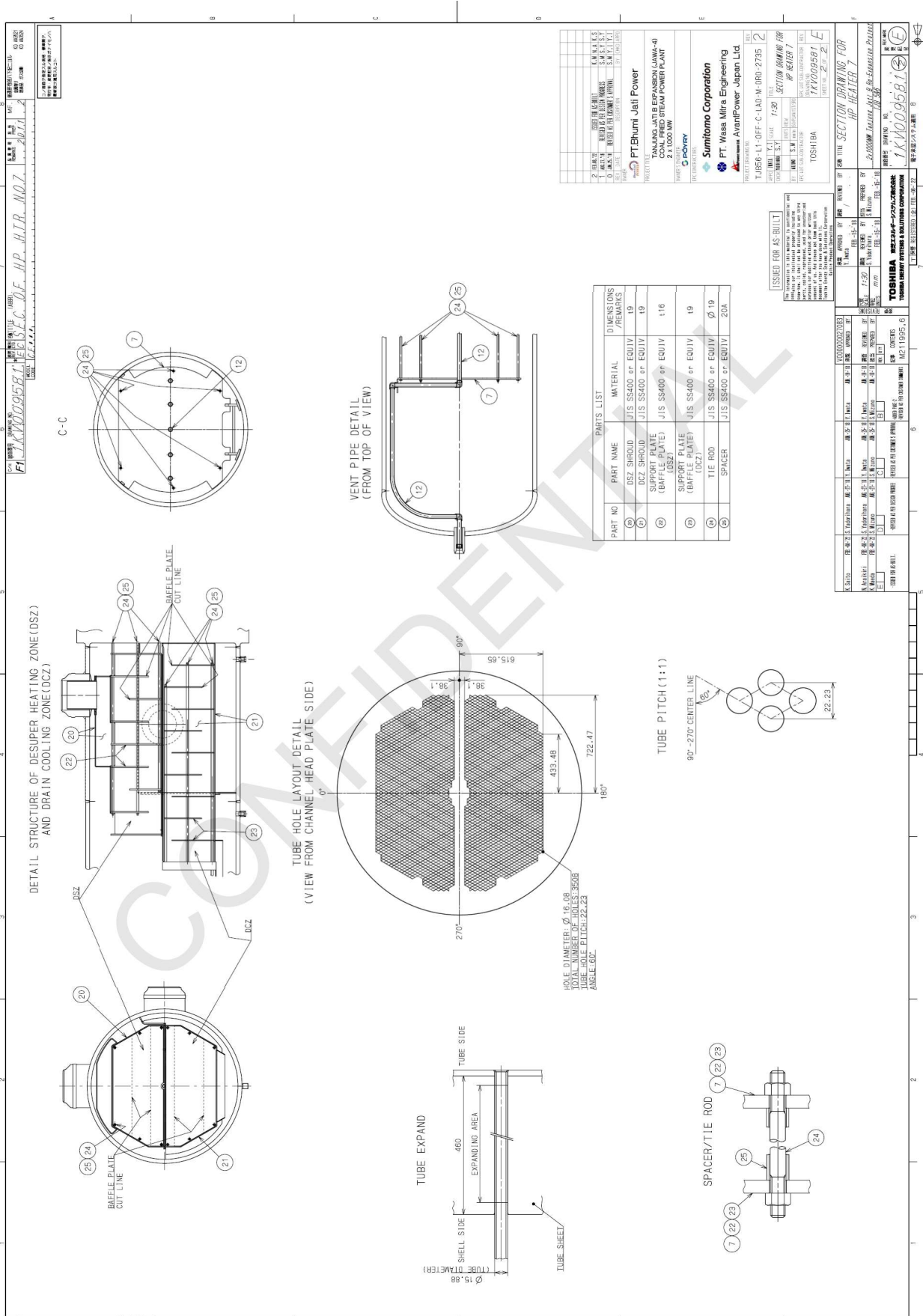
MANHOLE COVER 0.25 TON  
 SEISMIC LOAD SHALL BE 0.14 TON  
 \* X SEISMIC FACTOR

REFERENCE DOCUMENT: DRAWING FOR HP HEATER 7.1.1 (REV. 1.1) OFF-C-LAD-M-DRD-2861/16/09/04/61  
 2. FOUNDATION OUTLINE FOR HP HEATER 607A/700/11-OFF-C-LAD-C-CPA-302/14/08/07/82  
 3. SIZING CALCULATION FOR LP AND HP HEATERS/TURBINE-11-OFF-C-LAD-M-CAL-2364/00/47/723  
 K.S. COPIES

UNITS: SOLID21 ACT10 500.0022 AC10D  
 HP HEATER 7A HP HEATER 7B  
 UNIT16 BOLAD21 ACT10 60.0022 AC10D

ASSOCIATION: NINTENDO  
 6. BRACKET SHOWS THE DIMENSION DURING SHOP FABRICATION.  
 7. THE DIMENSION OF THE BRACKET SHALL BE AS SHOWN IN THE DRAWING.  
 8. PRESSURE RANGE: 0.0-0.99 MPa/14.7-143.8 PSIG  
 9. DESIGN POINT: 0.0-0.99 MPa/14.7-143.8 PSIG

DETAIL OF WELD END PREPARATION OF C-1, C-2	
CONN. Ø A	Ø B
S-1 406.4 362.0 363.5 21.44	Ø C 1
S-2 325.8 270.0 268.64 17.46	
S-3 406.4 360.0 363.5 21.44	
S-4 174.31 77.0 102.26 6.02	



Uncontrolled when printed or downloaded. Verify that this is the correct version before use.  
 Reproduction of part or all the contents of the document is prohibited without written permission from PT. Bhumi Jepra Service