

ATTACHMENT-1

MANHOLE SECTION

Table with 2 columns: DESIGN PARAMETER and VALUE. Includes rows for DESIGN PRESSURE (10.0 bar(g)), DESIGN TEMPERATURE (185.0 °C), HYDROSTATIC TEST PRESS. (15.0 bar(g)), etc.

MATERIAL LIST table with columns: PART NO., PART NAME, MATERIAL, REMARKS. Lists components like SHELL AND HEAD PLATE, TRAY, MANHOLE COVER, etc.

WEIGHTS table with columns: COMPLETE-DRY (EMPTY LOAD), OPERATING (AMT. LOAD), FLOODED (PHOROTEST LOAD), SEISMIC LOAD#. Includes notes on seismic load and connection types.

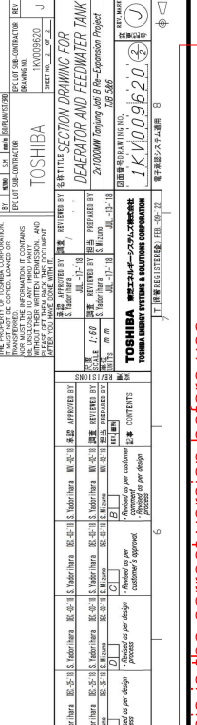
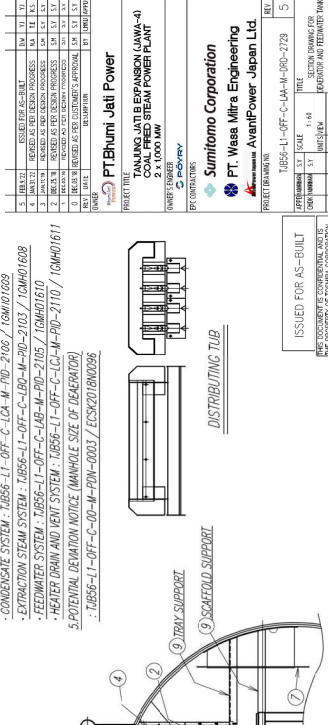


Table with 2 columns: ITEM NO. and DESCRIPTION. Lists items like 1. STEAM INLET, 2. CONDENSATE WATER INLET, 3. FEED WATER INLET, etc.

Table with 2 columns: CONN. and DESCRIPTION. Lists connection types like S-1 STEAM INLET, S-2 CONDENSATE WATER INLET, etc.

Table with 2 columns: ALLOWABLE FORCE (kg) and ALLOWABLE MOMENT (kg-m). Lists values for various connection points.

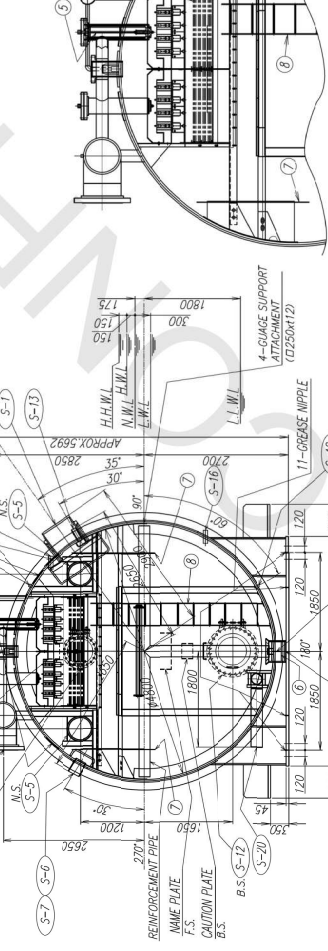
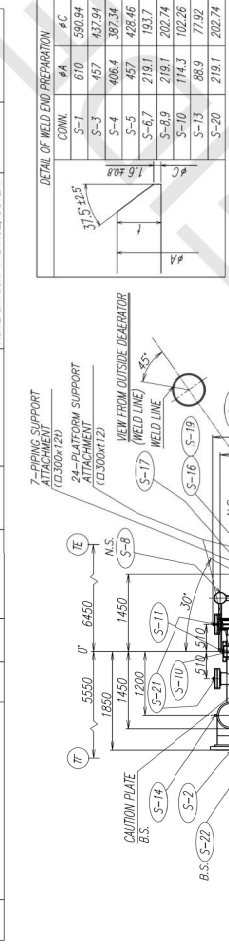


Table with 2 columns: ITEM NO. and DESCRIPTION. Lists items like 1. STEAM INLET, 2. CONDENSATE WATER INLET, 3. FEED WATER INLET, etc.

Manhole gasket shall be used the Graphite type Spiral Wound Gasket. Refer to Item No. TJB5-IS-MECH-DEA-001 of Chapter 2. Section e Supplemental Information of Initial Spare Parts for Mechanical (TJB56-L1-OFF-C-00-M-LST-2011).