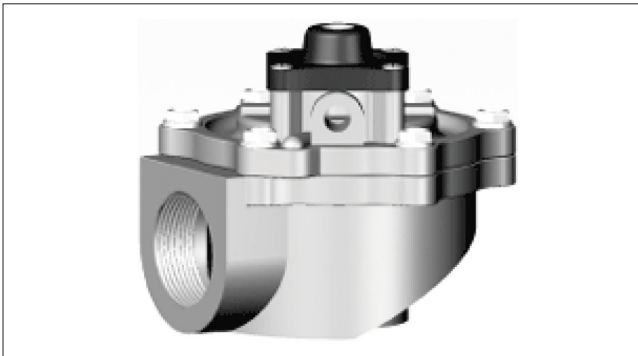
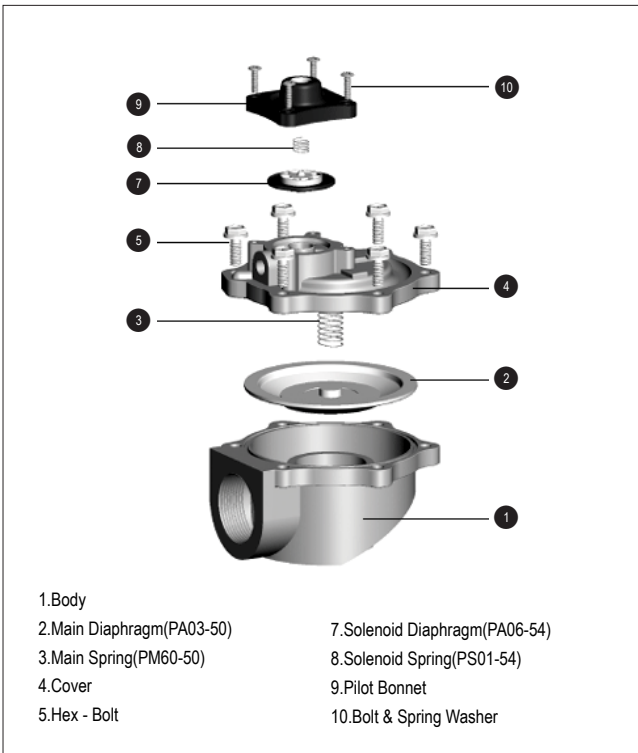


TH-5450-B(Double, Remote pilot, Screw)



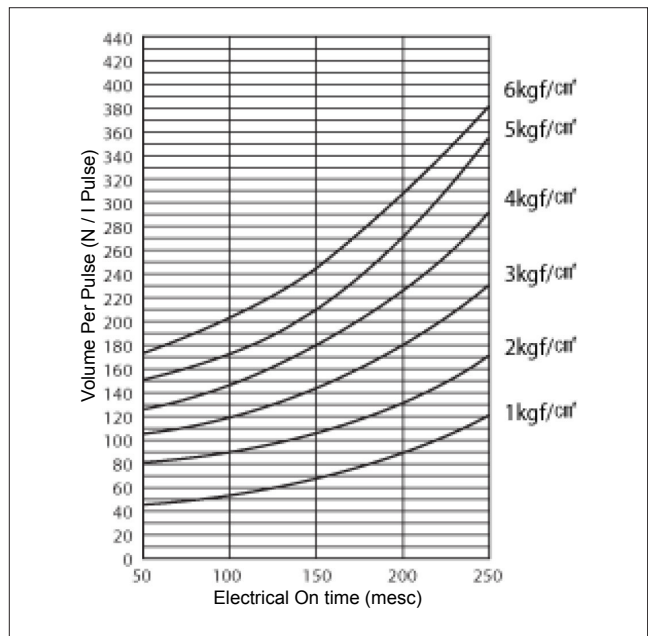
Fluid	Air, Inert gas
Valve function	Nomally close
Port size(inlet/outlet)	Rc(PT) 2"
Cv Flow Factor	74.2
Valve body	Die-cast aluminum
Fluid temperature	Max. 110°C
Ambient temperature	Max. 100°C
Pilot Air	Double
Port type	Screw
Diaphragm	Elastomer
Design pressure	10.5kgf/cm ²
Max.operating pressure	8.5kgf/cm ²
Weight	1895g

Construction



※ Maintenance parts - SPK1: Diaphragm kit(Parts no:2+3+7+8)

Air Consumption



Dimensions

