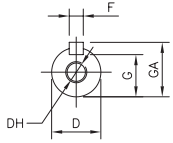


OUTLINE DIMENSIONS SHEET



CAST IRON 3 - PHASE SQUIRREL CAGE INDUCTION MOTORS FRAME 80 - 355L FOOT & FLANGE MOUNT
TOTALLY ENCLOSED FAN COOLED SQUIRREL CAGE ROTOR



SHAFT DETAIL

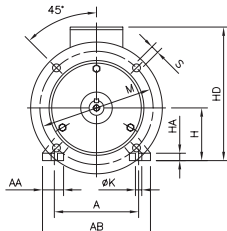


FIGURE 1

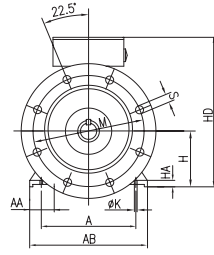
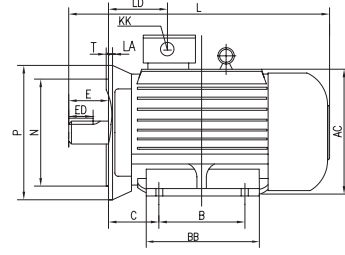


FIGURE 2



OUTPUT kW				FRAME SIZE	FIG. NO.	A	AA	AB	AC	B	BB	C	H	HA	HD	K	KK
2P	4P	6P	8P														
0.75/1.1	0.55/0.75	0.55	-	80	1	125	34	160	160	100	130	50	80	10	235	10	M25x1.5
1.5	1.1	0.75	-	90S	1	140	36	180	175	100	130	56	90	12	250	10	M25x1.5
2.2	1.5	1.1	-	90L	1	140	36	180	175	125	155	56	90	12	250	10	M25x1.5
3	2.2/3	1.5	0.75/1.1	100L	1	160	40	205	197	140	176	63	100	14	270	12	M32x1.5
4	4	2.2	1.5	112M	1	190	45	230	220	140	180	70	112	15	300	12	M32x1.5
5.5/7.5	5.5	3	2.2	132S	1	216	55	270	262	140	186	89	132	18	345	12	M32x1.5
-	7.5	4/5.5	3	132M	1	216	55	270	262	178	224	89	132	18	345	12	M32x1.5
11/15	11	7.5	4/5.5	160M	1	254	65	320	314	210	250	108	160	20	420	15	M40x1.5
18.5	15	11	7.5	160L	1	254	65	320	314	254	294	108	160	20	420	15	M40x1.5
22	18.5	3	2.2	180M	1	279	70	355	348	241	311	121	180	22	420	15	M40x1.5
-	22	15	11	180L	1	279	70	355	348	279	349	121	180	22	420	15	M40x1.5
30/37	30	18.5/22	15	200L	1	318	70	395	386	305	369	133	200	25	505	19	M50x1.5
-	37	-	18.5	225S	2	356	75	435	432	286	368	149	225	28	560	19	M50x1.5
45	-	-	-	225M	2	356	75	435	432	311	393	149	225	28	560	19	M50x1.5
-	45	30	22	225M	2	356	75	435	432	311	393	149	225	28	560	19	M50x1.5
55	-	-	-	250M	2	406	80	490	472	349	445	168	250	30	615	24	BLANK
-	55	37	30	250M	2	406	80	490	472	349	445	168	250	30	615	24	BLANK
-	75**	-	-	250M	2	406	80	490	472	349	445	168	250	30	615	24	BLANK
75	-	-	-	280S	2	457	85	550	534	368	485	190	280	35	680	24	BLANK
-	75	45	37	280S	2	457	85	550	534	368	485	190	280	35	680	24	BLANK
90/110**	-	-	-	280M	2	457	85	550	534	419	536	190	280	35	680	24	BLANK
-	90	55	45	280M	2	457	85	550	534	419	536	190	280	35	680	24	BLANK
110	-	-	-	315S	2	508	120	628	620	406	570	216	315	45	845	28	BLANK
-	110	75	55	315S	2	508	120	635	645	406	616	216	315	45	845	28	BLANK
132	-	-	-	315M	2	508	120	628	620	457	630	216	315	45	845	28	BLANK
-	132	90	75	315M	2	508	120	628	620	457	630	216	315	45	845	28	BLANK
160/200	-	-	-	315L	2	508	120	628	620	508	680	216	315	45	845	28	BLANK
-	160/200	110/132	90/110	315L	2	508	120	628	620	508	680	216	315	45	845	28	BLANK
250	-	-	-	355M	2	610	116	730	710	560	820	254	355	52	1010	28	BLANK
-	250(D)	160/200	132/160	355M	2	610	116	730	710	560	820	254	355	52	1010	28	BLANK
315	-	-	-	355L	2	610	116	730	710	630	820	254	355	52	1010	28	BLANK
-	315(D)	250	200	355L	2	610	116	730	710	630	820	254	355	52	1010	28	BLANK

FRAME SIZE	SHAFT EXTENSION																BEARINGS	
	L	LA	LD	M	N	P	S	T	D	E	ED	F	G	GA	DH	DE	NDE	
80	300	12	72	165	130	200	12	3.5	19	40	22	6	15.5	21.5	M6x12	6204ZZ	6204ZZ	
90S	315	12	72	165	130	200	12	3.5	24	50	32	8	20	27	M8x16	6205ZZ	6205ZZ	
90L	345	12	72	165	130	200	12	3.5	24	50	32	8	20	27	M8x16	6205ZZ	6205ZZ	
100L	385	13	78	215	180	250	15	4	28	60	40	8	24	31	M10x20	6206ZZ	6206ZZ	
112M	400	14	87	215	180	250	15	4	28	60	40	8	24	31	M10x20	6206ZZ	6206ZZ	
132S	470	14	102	265	230	300	15	4	38	80	56	10	33	41	M12x24	6208ZZ	6208ZZ	
132M	510	14	102	265	230	300	15	4	38	80	56	10	33	41	M12x24	6208ZZ	6208ZZ	
160M	615	15	142	300	250	350	19	5	42	110	80	12	37	45	M16x32	6309ZZ (6209ZZ)	6209ZZ	
160L	670	15	142	300	250	350	19	5	42	110	80	12	37	45	M16x32	6309ZZ (6209ZZ)	6209ZZ	
180M	700	15	164	300	250	350	19	5	48	110	80	14	42.5	51.5	M16x32	6311 (6211)	6211	
180L	740	15	164	300	250	350	19	5	48	110	80	14	42.5	51.5	M16x32	6311 (6211)	6211	
200L	770	17	176	350	300	400	19	5	55	110	80	16	49	59	M20x40	6312 (6212)	6212	
225S(4-8)	820	20	197	400	350	450	19	5	60	140	100	18	53	64	M20x40	6313	6312	
225M(2)	815	20	197	400	350	450	19	5	55	110	80	16	49	59	M20x40	6312	6312	
225M(4-8)	845	20	197	400	350	450	19	5	60	140	100	18	53	64	M20x40	6313	6312	
250M(2)	910	22	215	500	450	550	19	5	60	140	100	18	53	64	M20x40	6313	6313	
250M(4-8)	910	22	215	500	450	550	19	5	65	140	100	18	58	69	M20x40	NU314	6313	
250M(75KW)	910	22	215	500	450	550	19	5	70	140	110	20	62.5	74.5	M20x40	NU315	6313	
280S(2)	985	22	221	500	450	550	19	5	65	140	100	18	58	69	M20x40	6314	6314	
280S(4-8)	985	22	221	500	450	550	19	5	75	140	100	20	67.5	79.5	M20x40	NU317	6314	
280M(2)	1035	22	221	500	450	550	19	5	65	140	100	18	58	69	M20x40	6314	6314	
280M(4-8)	1035	22	221	500	450	550	19	5	75	140	100	20	67.5	79.5	M20x40	NU317	6314	
315S(2)	1178	22	257	600	550	660	24	6	65	140	100	18	58	69	M20x40	6317	6317	
315S(48-)	1208	22	257	600	550	660	24	6	80	170	130	22	71	85	M20x40	NU319	6319	
315M(2)	1238	22	257	600	550	660	24	6	65	140	100	18	58	69	M20x40	6317	6317	
315M(4-8)	1268	22	257	600	550	660	24	6	80	170	130	22	71	85	M20x40	NU319	6319	
315L(2)	1288	22	257	600	550	660	24	6	65	140	100	18	58	69	M20x40	6317	6317	
315L(4-8)	1318	22	257	600	550	660	24	6	80	170	130	22	71	85	M20x40	NU319	6319	
355M(2)	1500	25	284	740	680	800	24	6	75	140	100	20	67.5	79.5	M20x40	6319	6319	
355M(4-8)	1530	25	284	740	680	800	24	6	95	170	130	25	85	99	M20x40	NU322	6322	
355L(2)	1500	25	284	740	680	800	24	6	75	140	100	20	67.5	79.5	M20x40	6319	6319	
355L(4-8)	1530	25	284	740	680	800	24	6	95	170	130	25	86	100	M20x40	NU322	6322	

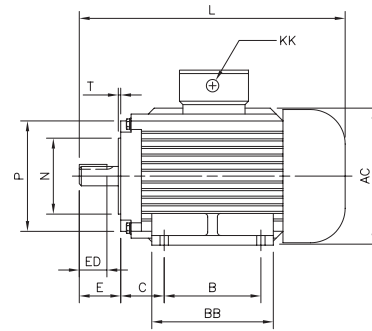
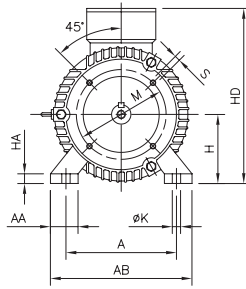
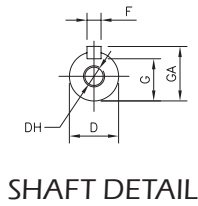
Notes: 1. Dimensional data subject to change without notice.
2. Lifting facilities provided on motors frame size D100 and larger.
3. For tolerances see page 15.

4. Bearing numbers in brackets apply to 2 pole motors.
5. IEC standard frame allocations available for 110kw 2 pole, 75kw and 110kw 4 pole.

OUTLINE DIMENSIONS SHEET



CAST IRON 3 - PHASE SQUIRREL CAGE INDUCTION MOTORS FRAME 80 - 132 FOOT AND C FACE
TOTALLY ENCLOSED FAN COOLED SQUIRREL CAGE ROTOR



OUTPUT kW				FRAME SIZE	A	AA	AB	AC	B	BB	C	H	HA	HD	K	KK	L
2P	4P	6P	8P														
0.75/1.1	0.55/0.75	0.55	-	80	125	34	160	160	100	130	50	80	10	235	10	M25x1.5	300
1.5	1.1	0.75	-	90S	140	36	180	175	100	130	56	90	12	250	10	M25x1.5	320
2.2	1.5	1.1	-	90L	140	36	180	175	125	155	56	90	12	250	10	M25x1.5	345
3	2.2/3	1.5	0.75/1.1	100L	160	40	205	197	140	176	63	100	14	270	12	M32x1.5	385
4	4	2.2	1.5	112M	190	45	230	220	140	180	70	112	15	300	12	M32x1.5	400
5.5/7.5	5.5	3	2.2	132S	216	55	270	262	140	186	89	132	18	345	12	M32x1.5	470
-	7.5	4/5.5	3	132M	216	55	270	262	178	224	89	132	18	345	12	M32x1.5	510

FRAME SIZE	SHAFT EXTENSION											BEARINGS		
	M	N	P	S	T	D	E	ED	F	G	GA	DH	DE	NDE
80	100	80	142	M6	3.0	19	40	22	6	15.5	21.5	M6x12	6204ZZ	6204ZZ
90S	115	95	148	M8	3.0	24	50	32	8	20	27	M8x16	6205ZZ	6205ZZ
90L	115	95	148	M8	3.0	24	50	32	8	20	27	M8x16	6205ZZ	6205ZZ
100L	130	110	177	M8	3.5	28	60	40	8	24	31	M10x20	6206ZZ	6206ZZ
112M	130	110	190	M8	3.5	28	60	40	8	24	31	M10x20	6206ZZ	6206ZZ
132S	165	130	200	M10	3.5	38	80	56	10	33	41	M12x24	6208ZZ	6208ZZ
132M	165	130	200	M10	3.5	38	80	56	10	33	41	M12x24	6208ZZ	6208ZZ

TOLERANCES

D	F	G & H	K	N	S	T							
19≤D≤28	+0.009 -0.004	F=6	+0, -0.03	G=15.5	+0 -0.10	K=10	+0.360 +0	N=80	+0.012 +0.007	12≤S≤15	+0.430 +0	T = 3	+0 -0.100
38≤D≤48	+0.018 +0.002	8≤F≤10	+0, -0.036	20≤G≤90	+0 -0.20	12≤K≤15	+0.430 +0	95≤N≤110	+0.013 +0.009	19≤S≤28	+0.520 +0	3.5≤T≤5	+0 -0.120
55≤D≤80	+0.030 +0.011	12≤F≤18	+0, -0.043	80≤H≤250	+0 -0.5	19≤K≤28	+0.520 +0	130≤N≤180	+0.014 +0.011			T = 6	+0 -0.150
95≤D≤100	+0.035 +0.013	20≤F≤28	+0, -0.052	280≤H≤400	+0 -1.0	K=35	+0.620 +0	230≤N≤250	+0.016 +0.013				

- Notes: 1. Dimensional data subject to change without notice.
2. Lifting facilities provided on motors frame size D100 and larger.



HEAD OFFICE

Teco Electric & Machinery Co. Ltd
10F No, 3-1, Yuan Cyu St.
Nan-Kang Taipei 115
Taiwan ROC
Tel: +886 2 6615 9111
www.teco.com.tw

UNITED STATES

Teco-Westinghouse Motor Company
PO Box 227 (78680-0277)
5100 N.IH35
Round Rock Texas 78681 USA
Tel: +1 512 255 4141
+1 800 873 8326
www.tecowestinghouse.com

CANADA

Teco-Westinghouse
Motors Inc. (Canada)
18060-109th Ave
Edmonton, Alberta T5S 2K2 Canada
Tel: +1 780 444 8933
Fax: (780) 486-4575
24 HR Emergency Pager:
(780) 419 7734
Toll Free: 800-661-4023
Fax Toll Free: 888-USE-TWMI
www.twmi.com

UNITED KINGDOM

Teco Electric Europe Ltd.
26 Bond, Europa Way
Old Trafford, Manchester
M17 1WF England
Tel: +44 161 877 8025
www.teco.co.uk

NETHERLANDS

Teco Electric & Machinery B.V.
Teco's European Head Office
Rivium 3e Straat 27
2909 LH Capelle a/d IJssel
The Netherlands
Tel: +31 10 266 6633
Fax: +31 10 202 6415

GERMANY

Teco Electric & Machinery B.V.
Niederlassung Deutschland
Marktstrasse 69
37441 Bad Sachsa
Germany
Tel: +49 5523 95340
Fax: +49 5523 953424
www.teco-westinghouse.de

SPAIN

Teco Electric & Machinery B.V.
Spain Office
C/Sancho Dávila, 8, 1D
28028 Madrid Spain
Tel: +34 91 725 1718
E: info@tecowestinghouse.es

SAUDI ARABIA

Al Quraishi Electrical Services of S.A.
Al Quraishi Center, King Khalid Street,
P.O.Box 7386, Dammam-31462
Tel: +966 3 835 1155
Fax: +966 3 835 2297
www.aqesa.com

IRAN

ATLAS DIBA Engineering & Trade Co.
No.212,Fakouri St., South Kadj Ave.
Golha Sq., Fatemi, Tehran, Iran
Tel : +98 21 8833 0381-3
Fax : +98 21 8833 0384
http://www.atlasdibaco.com

SOUTH AFRICA

ArmCoil Afrika (Pty) Ltd.
Unit 3 Prestige Park 127 Main Reef Road
Technikon Roodepoort
PO Box 500 Maraisburg 1700
Gauteng South Africa
Tel: +2711 763 2351
Fax: 0866 318 588
www.armcoil.co.za

AUSTRALIA

Teco Australia Pty Ltd.
335-337 Woodpark Road
Smithfield NSW 2164 Australia
Tel: +61 2 9765 8118
www.teco.com.au

NEW ZEALAND

Teco New Zealand Pty Ltd.
Unit 3 477 Great South Road
Penrose Auckland New Zealand
Tel: +64 9 526 8480

JAPAN

Sankyo Co., Ltd.
26th fl. World Trading Center Bldg.
2-4-1 Hamamatsucho Minato-ku
Tokyo Japan 105-6126
Tel: +81 3 3435 9729
Fax: +81 3 3578 8381

SINGAPORE

Teco Electric & Machinery (PTE) Ltd.
18 Chin Bee Drive
Singapore 619865
Tel: +65 6 265 4622
www.teco.com.sg

INDONESIA

P.T. Teco Multiguna Elektro
JL Bandengan Utara No. 83/1-3
Jakarta Utara-14400 Indonesia
Tel: +62 21 662 2201

VIETNAM

TECO(Vietnam)Electric & Machinery Co., Ltd.
KCN LONG Thanh, Huyen Long Thanh,
Tinh Dong Nai, Vietnam
Tel: +84 061 3514108
Fax: +84 061 3514410

CHINA

Shanghai Office
Rm 321 Building No.6
Lane 1279 Zhongshan W. Rd.
Shanghai, PRC
Tel: +86 21 5116 8255
Fax: +86 21 6278 8761

Wuxi Teco Electric & Machinery Co., Ltd.
No. 9 South Of Changjiang Road,
New Zone, Wuxi,
Jiangsu Province, PRC
Tel: +86 510 8534 2005
Fax: +86 510 8534 2001
www.wuxiteco.com

Jiangxi Teco Electric & Machinery Co., Ltd
189 Dongyuan Rd. Hi-Tech Zone,
Nanchang Jiangxi, china
Tel: +86 791 819 5999
Fax: +86 791 816 7730

Suzhou Teco Electric &
Machinery Co., Ltd
No. 1 Changjiang W.Rd. Liuhe
Taicang City, Suzhou,
Jiangsu Province, PRC
Tel: +86 512 5361 9901
Fax: +86 512 5396 1058

FUJIAN TECO PRECISION CO., LTD.
Xiayang, Jiazhao, Zhanggang Village,
Saiqi Development
Zone, Fuan, Fujian, China
Tel: +86 593 633 0300
Fax: +86 593 633 0303

HONG KONG

Tecoson Industrial Development
(HK) Co., Ltd.
Rm 3712 Hong Kong Plaza
186-191 Connaught Rd. West
Hong Kong
Tel: +852 2858 3220

MALAYSIA

STE Marketing SDN BHD
6 Jalan Firma 2 Kawasan Perind. Tebrau 1
81100 Johor Bahru Johor Malaysia
Tel: +60 7 354 8008

THAILAND

Teco Electric & Machinery
(Thai) Co., Ltd.
128/1 Soi Watsrivareeno
Moo 7 Bangna-Trad Road Km 18
Bangchalong Bangplee
Samuthprakarn 10540 Thailand
Tel: +662 3371311- 20