



BY JOHNSON CONTROLS

S70-250 SPL (AUG 2006)

**SERVICE PARTS LIST**

File: SERVICE MANUAL - Section 70  
Replaces: S70-250 SPL/DEC 2001  
Dist: 3, 3a, 3b, 3c

**Service Parts List**

# **TDSH / GDSH / TDSB**

## **ROTARY SCREW COMPRESSORS**

**MODELS: 163 through 355**

Please check [www.johnsoncontrols.com](http://www.johnsoncontrols.com) for the latest version of this publication.

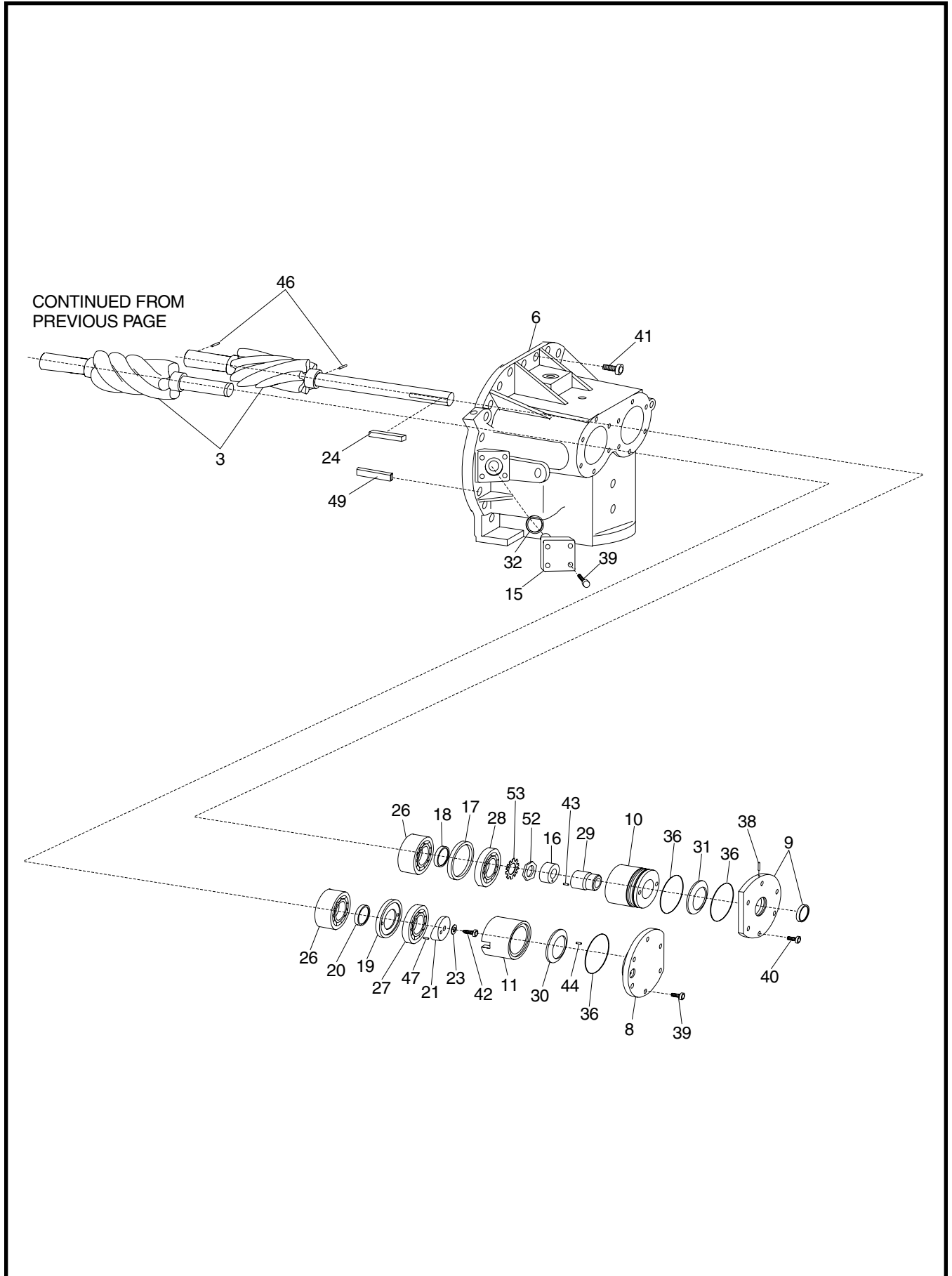


Figure 10b. Screw Compressor, 283.

FIG. & INDEX	ITEM NUMBER	DESCRIPTION	QTY.	REV.
10—	534D0575G01	TDSH 283S, Screw Compressor, New	Ref.	P
	534D0575G02	TDSH 283L, Screw Compressor, New	Ref.	P
	534E0604G01	TDSH 283XL, Screw Compressor, New	Ref.	J
	534D0575S01	TDSH 283S, Screw Compressor, Rebuilt	Ref.	
	534D0575S02	TDSH 283L, Screw Compressor, Rebuilt	Ref.	
	534D0885G01	TDSH 283S, Screw Compressor, Handwheel, New	Ref.	P
	534D0885G02	TDSH 283L, Screw Compressor, Handwheel, New	Ref.	P
—1	—	Slide Stop Indication Assembly (See Figure 17)	Ref.	
—2	—	Slide Valve/Stop Assembly (See Figure 11 & 12)	Ref.	
—3	534A0324G02	Rotor Pair, TDSH 283S <sup>(2)</sup>	1	
	534A0088G01	Rotor Pair, TDSH 283S <sup>(3)</sup>	1	
	534A0259G02	Rotor Pair, TDSH 283L <sup>(2)</sup>	1	
	534A0089G01	Rotor Pair, TDSH 283L <sup>(3)</sup>	1	
	534A0644G02	Rotor Pair, TDSH 283SX <sup>(2)</sup>	1	
	534A0331G02	Rotor Pair, TDSL 283XL	1	
—4	534C0208G01	Assembly, Casing, Rotor, TDSH 283S	1	
	534C0194H31	Plug, Pipe, 3/4-14 NPTF w/.397" Orifice	1	
	534C0207G01	Assembly, Casing, Rotor, TDSH 283L	1	
	534C0194H32	Plug, Pipe, 3/4-14 NPTF w/.453" Orifice	1	
	534C1204G01	Assembly, Casing, Rotor, TDSH 283SX	1	
	534C0194H53	Plug, Pipe, 3/4-14 NPTF w/.500" Orifice	1	
—5	534E0271C02	Casing, Inlet, TDSH 283S/L <sup>(2)</sup>	1	
	534E0049C01	Casing, Inlet, TDSH 283S/L <sup>(3)</sup>	1	
	534E0271C01	Casing, Inlet, TDSH 283XL	1	
—6	534E0439C01	Casing, Discharge	1	
—7	534D0499C01	Cover, Inlet <sup>(2)</sup>	1	
	534D0145C01	Cover, Inlet <sup>(3)</sup>	1	
—8	534D0161C01	Cover, Outlet	1	
—9	534D0151C01	Housing, Seal	1	
	333Q0001219	Seal, Oil (Oil Seal Tool 534A0636H01)	1	
—10	534D0150C01	Spacer, Seal Housing	1	
—11	534D0170C01	Sleeve, Distance	1	
—12	534D0168C01	Cover, Female Inlet Bore	1	
—13	534D0509C01	Sleeve, Male Balance Piston ★	1	
	534D0226C01	Sleeve, Male Balance Piston ◆	1	
—14	534D0507C01	Cover, Male Inlet Bore	1	
—15	534C0204C01	Plug, Vapor Injection	1	
—16	534C0193H01	Ring, Seal Distance	1	
—17	534C0645H01	Plate, Male Bearing Backup ▲ ◆	1	
	534C0190H01	Plate, M/F Bearing Backup ♣	1	
—18	534C0646H01	Washer, Male Adjusting ▲ ◆	1	
	534C0191H01	Washer, M/F Adjusting ♣	1	
—19	534C0190H01	Plate, M/F Bearing Backup ▲ ◆ ♣	1	
—20	534C0191H01	Washer, M/F Adjusting ▲ ◆ ♣	1	
—21	534C0200H01	Plate, Bearing	1	
—22	534D0514H01	Piston, Male Balance ★	1	
	534C0279H01	Piston, Male Balance ◆	1	
—23	534B0103H01	Washer	1	
—24	534A0662H04	Key, Square	1	
—25	534B0004H11	Bearing, Cylindrical Roller ▲	2	
—26	534B0004H12	Bearing, Cylindrical Roller ▲	2	