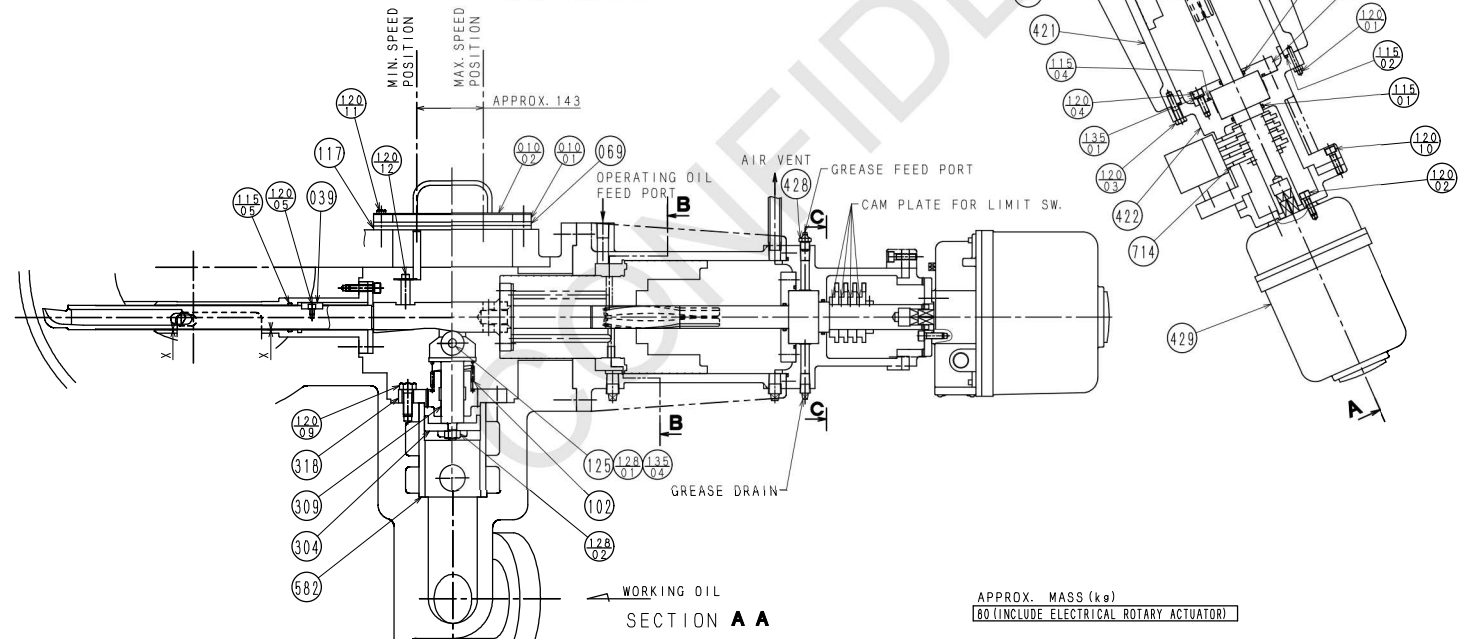
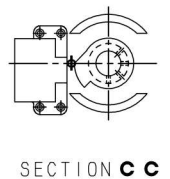
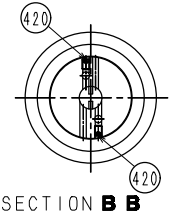


REV.	DESCRIPTION	DATE	BY	APP.
1	ISSUED FOR USE		Y. K. Y. K.	Y. K. Y. K.

REFERENCE DRAWING  
 (1) SECTION DRAWING FOR MBFP FLUID COUPLING  
 TJB56-L1-OFF-C-LAC-M-DRD-2709  
 CONNECTION REFERENCE  
 (1) PIPING AND INSTRUMENT DIAGRAM FOR  
 MBFP FLUID COUPLING  
 TJB56-L1-OFF-C-LAC-M-PID-2130  
 (2) PIPING AND INSTRUMENT DIAGRAM FOR  
 MBFP FLUID COUPLING HYDRO-SERVO  
 TJB56-L1-OFF-C-LAC-M-PID-2137

NO.	NAME OF PART	MATERIAL (JIS)	MATERIAL (ASTM equiv.)	Q'TY PER 1 SET
117	PACKING (D305X4190X11.0)	NON-ASBESTOS	NON-ASBESTOS	1
115-05	O-RING (JIS P53)	VITON	VITON	1
115-04	O-RING (JIS G85)	NBR	NBR	1
115-03	O-RING (JIS P40)	NBR	NBR	1
115-02	O-RING (JIS G210)	NBR	NBR	1
115-01	O-RING (JIS P50)	NBR	NBR	1
102	SPRING	SUS304	A276 304	1
069	GRADUATION PLATE	ACRYLIC	ACRYLIC	1
050	SLEEVE	SACM645	1SD 41CrAlNi74	1
039	KEY	SCM435	A322 4140	1
010-02	COVER	SS400	A283 Gr. D	1
010-01	COVER RING	SS400	A283 Gr. D	1



714	LIMIT SWITCH (LVDS-5414)	-	-	4
582	SLEEVE	SA5C	A576 1045	1
429	ELECTRICAL ROTARY ACTUATOR (PRP-00A-L3)	-	-	1
428	GREASE NIPPLE	CAC203	C83600	2
425	ROTARY PILOT HOLDER	CAC203	C83600	1
424	ROTARY PILOT	SCM420	A283 Gr. D	1
423	PISTON	FCD450	A48 CL. 40	1
422	MOTOR BRACKET	FC300	A48 CL. 40	1
421	HOUSING	FC250	A48 CL. 30	1
420	PLUG	S10C	A576 1010	2
410	SCOOP TUBE	SCM440H	A322 4140	1
318	VALVE COVER	CAC406	C83600	1
309	STEM	SA5C	A576 1045	1
304	DISK	CAC406	C83600	1
274-02	SPACER	SUS304	A276 304	1
274-01	SPACER	SS400	A283 Gr. D	1
135-04	ROLLER (D32Xd12XW15)	SUJ	SAE52100	1
135-03	SPRING WASHER	SWRH62	A510	2
135-02	SPRING WASHER	SWRH62	A510	8
135-01	SPRING WASHER	SWRH62	A510	4
128-02	LOCK NUT (M12)	SS400	A283 Gr. D	1
128-01	NUT (M10)	SS400	A283 Gr. D	1
125	REAMER BOLT (M10X85)	SS400	A283 Gr. D	1
120-12	BOLT (M6X12, ALLEN)	SCM435	A322 4140	1
120-11	BOLT (M6X10, HEX)	SS400	A283 Gr. D	6
120-10	BOLT (M8X50, ALLEN)	SCM435	A322 4140	4
120-09	BOLT (M12X35, HEX)	SS400	A283 Gr. D	6
120-08	BOLT (M10X45, ALLEN)	SCM435	A322 4140	2
120-07	BOLT (M12X35, ALLEN)	SCM435	A322 4140	3
120-06	BOLT (M16X45, ALLEN)	SCM435	A322 4140	8
120-05	BOLT (M6X9, ALLEN)	SCM435	A322 4140	4
120-04	BOLT (M8X25, ALLEN)	SCM435	A322 4140	4
120-03	BOLT (M10X40, HEX)	SS400	A283 Gr. D	8
120-02	BOLT (M8X25, ALLEN)	SCM435	A322 4140	4
120-01	KNOCK BOLT (M6X40, HEX)	SS400	A283 Gr. D	1

APPROX. MASS (kg)  
 (DO NOT INCLUDE ELECTRICAL ROTARY ACTUATOR)

CLEARANCE TABLE

ITEM	DESIGN DIMENSION (mm)	MINIMUM CLEARANCE (mm)
1	SCOP TUBE SLEEVE	D: 0.15 - 0.035

FLUID COUPLING KKS CODE  
 60L453 AP010 MK01  
 60L453 AR010 MK01

EBARA SER. NO.	CUSTOMER
R170411906, R170411912	Toshiba Energy Systems & Solutions Corporation
MODEL	SET
GCH105A-80DL	PT. Bhumi Jati Power
APP'D BY	TYPE
Y. KATAYA	SECTION DRAWING FOR MBFP FLUID COUPLING SCOOP TUBE
CHK'D BY	SCALE
Y. KATAYA	1/300
DATE	REV.
2012.11.27	0

Uncontrolled when printed or downloaded. Verify that this part is the correct revision before use.  
 Reproduction of part or all the contents of the document is prohibited without written permission from PT. Bhumi Jati Power Service

[図面管理番号 (MC)]

NO.	REV.
1	0