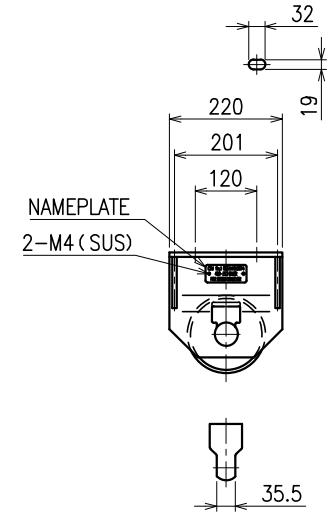
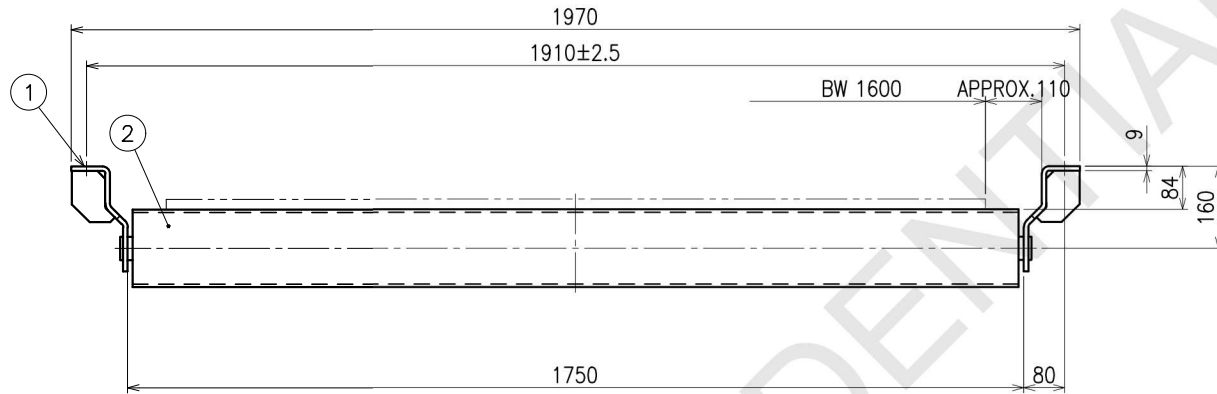


MARK	PARTICULARS	MATERIAL	NO. REQUIRED			MASS (Kg)		REMARKS
			WORKING	SPARE	TOTAL	PER ONE	TOTAL	
1	BRACKET	SS400						
2	t6 RUBBER LINING RETURN ROLLER	-						



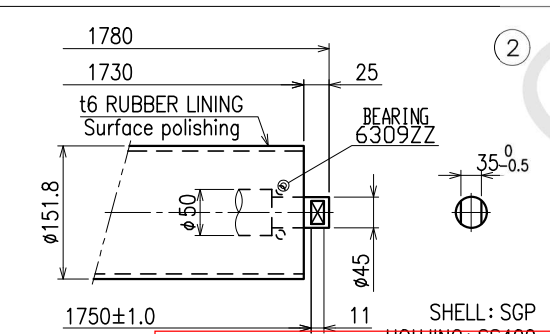
DETAIL OF KEY HOLES

Weight : 81 Kg/set

B	'18 02-JUL	REV: REVISE NAMEPLATE	4	SS	SS	M.K	Nakaseko
A	'18 8-JUN	REV: ADD NAMEPLATE	4	SS	SS	M.K	Nakaseko
0	'18 30-JAN		4	SS	SS	M.K	Nakaseko
NO.	DATE	DESCRIPTION	Q'ty	DRAWN	DESIGNED	CHECKED	APPROVED

SCALE	1/10	For Tanjung Jati B					
1ST ANGLE PROJECTION		2500t/h CSU Boom BC					
3RD ANGLE PROJECTION		B 1600					
		t6 RUBBER LINING RETURN IDLER					
		MARK3					

IHI	JOB NO.	BK1BA88	CLASSIFICATION	0420-0213
	DRAWING NO.	CJ8-10857	REV.	B



Uncontrolled when printed or downloaded. Verify that this is the correct version before use. Reproduction of part or all the contents of the document is prohibited without written permission from PT. IHI Transport Machinery Co., Ltd.