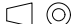
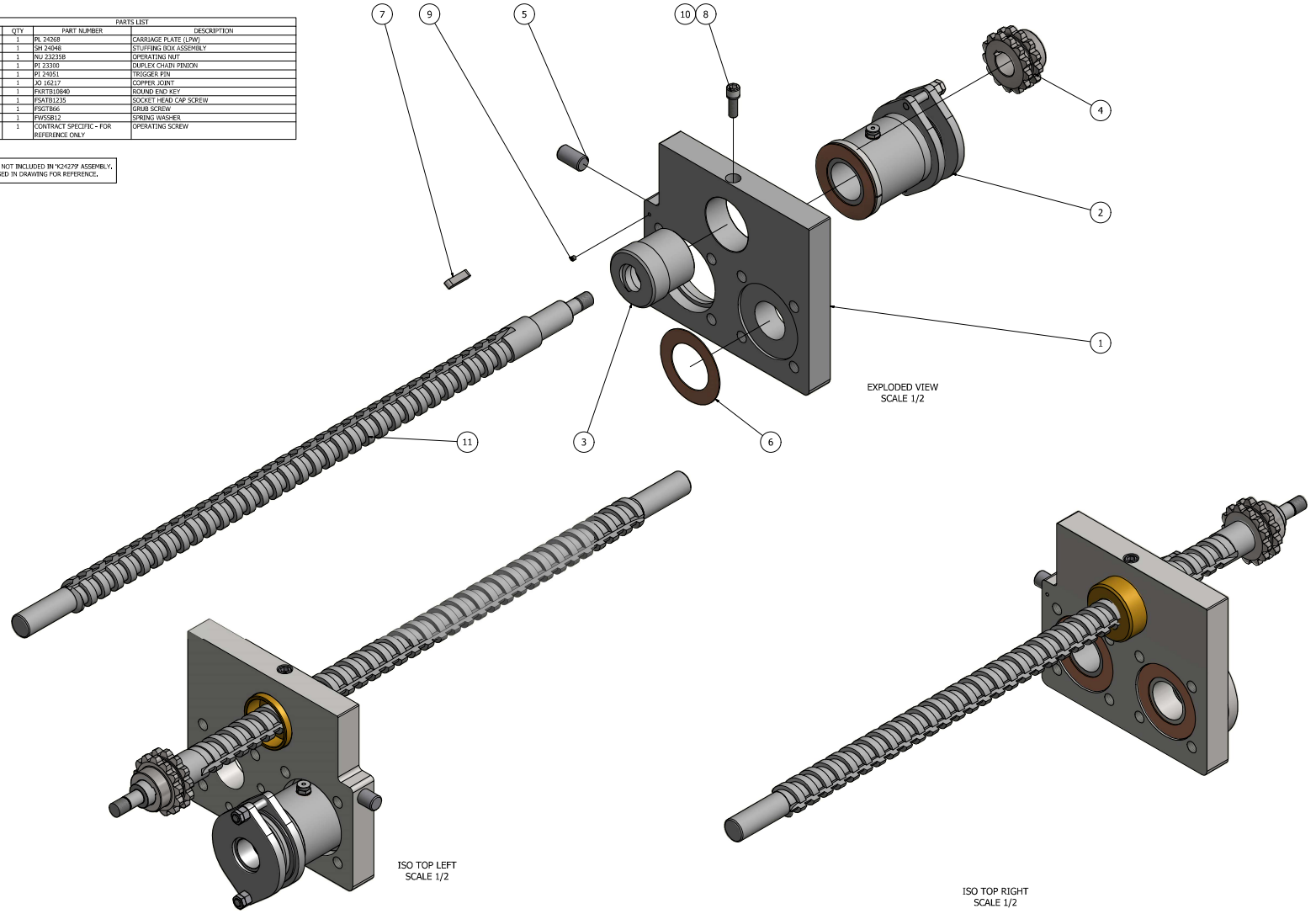


THIS DRAWING IS THE PROPERTY OF CLYDE BERGEMANN LIMITED. IT SHOULD NOT BE COPIED, DUPLICATED (IN PART OR FULL) TO AN OUTSIDE PARTY WITHOUT WRITTEN CONSENT FROM CLYDE BERGEMANN LIMITED.

1st ANGLE PROJECTION  DO NOT SCALE

ITEM	QTY	PART NUMBER	DESCRIPTION
1	1	PL 24268	CARRIAGE PLATE (LPW)
2	1	SH 24048	STUFFING BOX ASSEMBLY
3	1	NLS 23236	OPERATING NUT
4	1	PT 23300	DUPLEX CHAIN PINION
5	1	PI 24051	TRIGGER PIN
6	1	L2 16217	COPPER KEY
7	1	RKR1B10840	ROUND END KEY
8	1	PSATB1235	SOCKET HEAD CAP SCREW
9	1	PSG1846	SOLE SCREW
10	1	PWS5812	SPRING WASHER
11	1	CONTRACT SPECIFIC - FOR REFERENCE ONLY	OPERATING SCREW

ITEM 11 NOT INCLUDED IN K24279 ASSEMBLY. ONLY USED IN DRAWING FOR REFERENCE.



CHECKED	DATE	BY	DATE	APP.	DATE	REV.	ECN No.	DESCRIPTION	BY	DATE	APP.	DATE	mm
AC	26/05/14												
DRAWN	DATE	A											
NM	26/05/14	REV.	ECN No.										

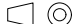
UNLESS STATED OTHERWISE UNFINISHED DIMENSIONS SHALL BE AS FOLLOWS -	DIMENSION RANGES	1-6	7-30	31-120	121-315	316-1000	1001-2000
TOLERANCE		+ 0.1	+ 0.2	+ 0.3	+ 0.5	+ 0.8	+ 1.2

TITLE
DETAIL OF CARRIAGE ASSEMBLY FOR VX-A-MULTIMEDIA SOOTBLOWER (LPW VERSION)

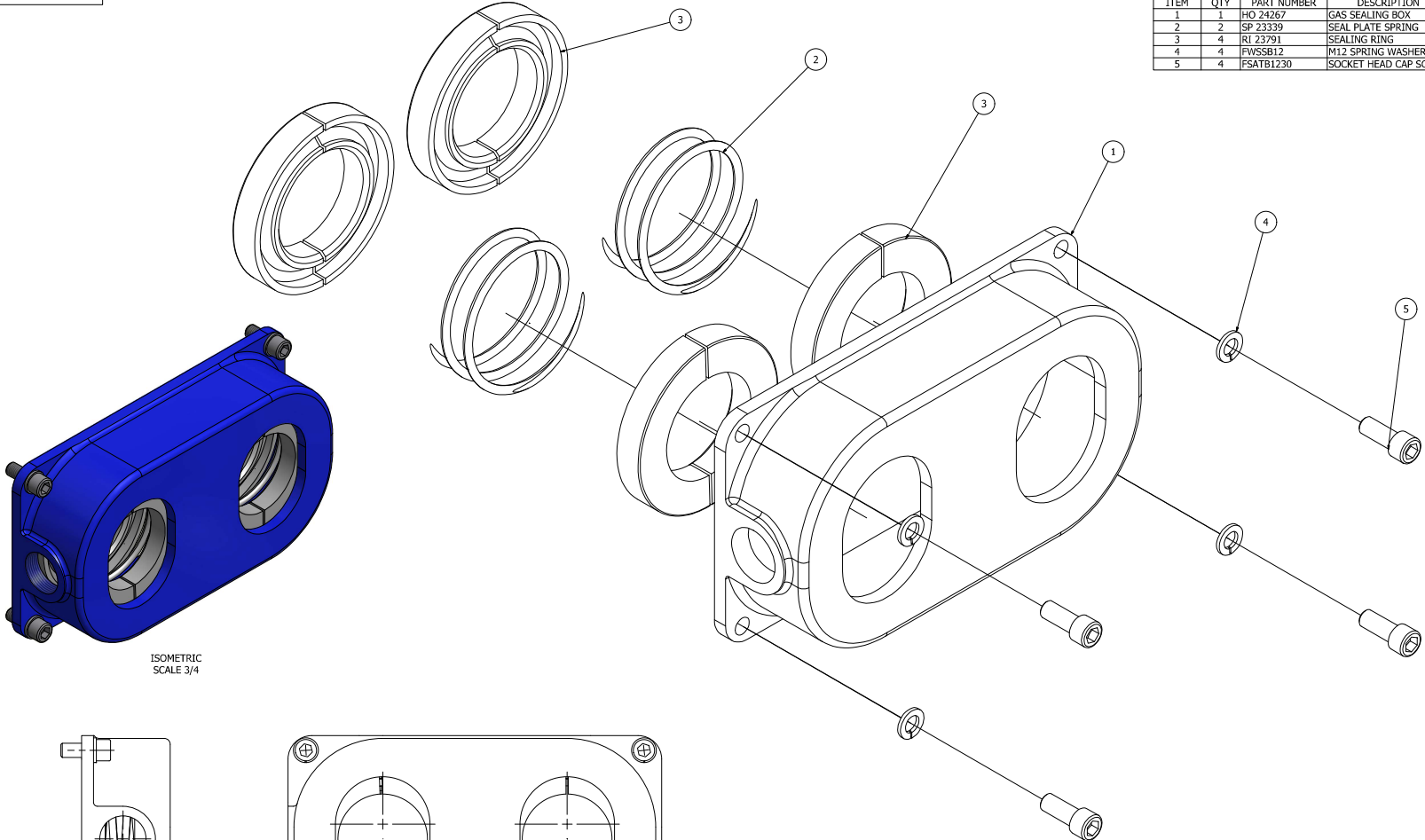
CLYDE BERGEMANN LTD GLASGOW, SCOTLAND
REF. No. 1CR K24279
DRAWING No. K24279'A'

CBSMASTAO

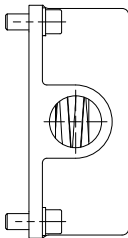
THIS DRAWING IS THE PROPERTY OF
CLYDE BERGEMANN LIMITED.
IT SHOULD NOT BE COPIED, DUPLICATED
(IN PART OR FULL) TO AN OUTSIDE
PARTY WITHOUT WRITTEN CONSENT FROM
CLYDE BERGEMANN LIMITED.

1st ANGLE PROJECTION  DO NOT SCALE

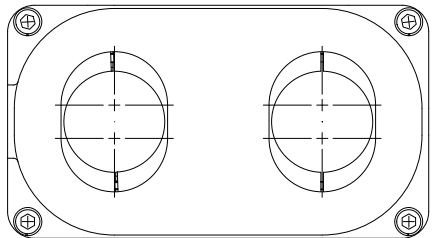
PARTS LIST			
ITEM	QTY	PART NUMBER	DESCRIPTION
1	1	HO 24267	GAS SEALING BOX
2	2	SP 23339	SEAL PLATE SPRING
3	4	RI 23791	SEALING RING
4	4	FWSSB12	M12 SPRING WASHER
5	4	FSATB1230	SOCKET HEAD CAP SCREW



ISOMETRIC
SCALE 3/4



SIDE ELEVATION
SCALE 3/4



FRONT ELEVATION
SCALE 3/4

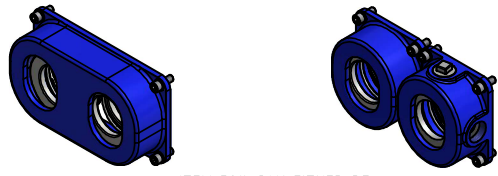
UNLESS STATED OTHERWISE UNITS SHOWN IN DIMENSIONS SHALL BE AS FOLLOWS -	DIMENSION RANGE	DIMENSION TOLERANCE					
		1-6	7-30	31-120	121-315	316-1000	1001-2000
		+ 0,1	+ 0,2	+ 0,3	+ 0,5	+ 0,8	+ 1,2

TITLE	
DETAIL OF CARRIAGE ASSEMBLY FOR TWIN VX-AB SOOTBLOWER.	

CLYDE BERGEMANN LTD GLASGOW, SCOTLAND	
REF. No.	1WB K24281
DRAWING No.	K24281'A'

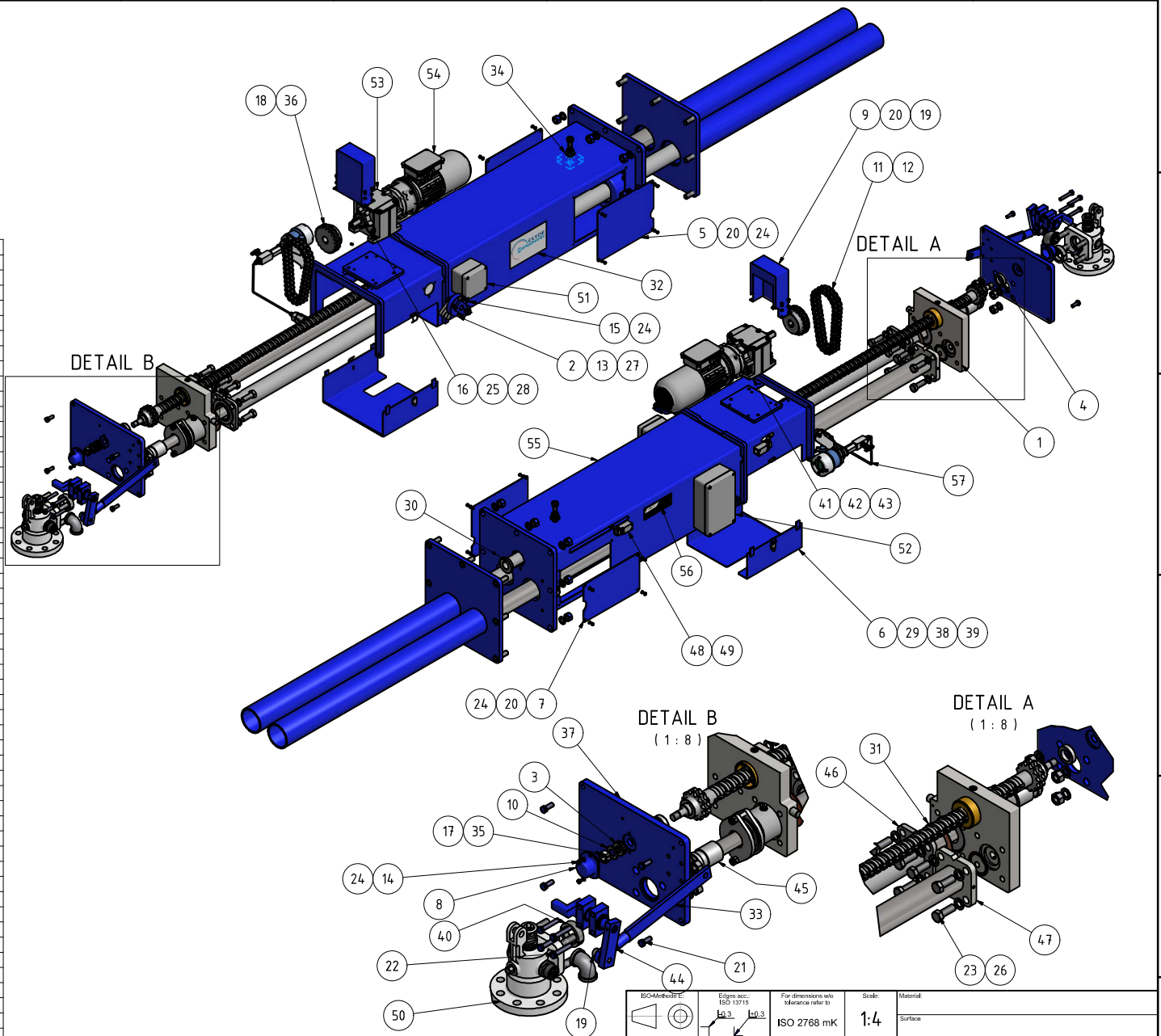
CHECKED	DATE	BY	DATE	APP.	DATE	REV.	ECN No.	DESCRIPTION	BY	DATE	APP.	DATE	DIMENSIONS IN
AC	28/05/14												mm
DRAWN	DATE	A						ITEM 6, PL 23729 REMOVED	NM	16/06/14	NM	16/06/14	
NM	28/05/14	REV.	ECN No.										

CBSMASTAO



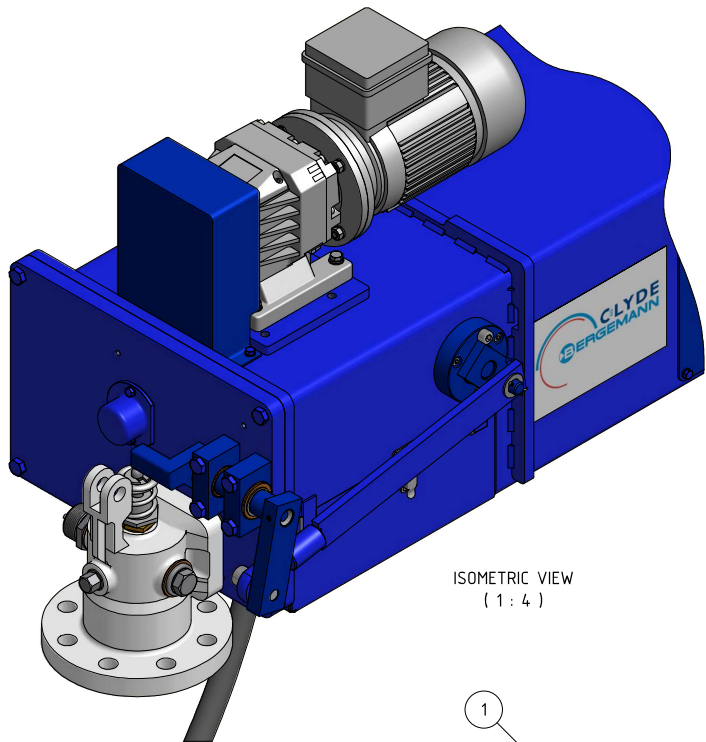
ITEM 58# CAN EITHER BE
1WB K24308 (FABRICATED ASSEMBLY) OR
1WB K24364 (CASTING ASSEMBLY)
DEPENDANT ON THE AVAILABILITY OF CASTING

Item No.	Part No.	Description	U.O.M.	Qty
1	1CR K24316	VX-A-MMEDIA (HPW) CARRIAGE 42/37	EA	1
2	1VM K23332A	VALVE OPERATING MECHANISM	EA	1
3	BBTBB204014	THRUST BEARING	EA	1
4	BU 23606	THRUST BUSH	EA	1
5	CO 24371	LHS FRONT COVER	EA	1
6	CO 24313	REAR DRIP COVER	EA	1
7	CO 24023	RHS FRONT COVER	EA	1
8	CO 23614	DUST COVER	EA	1
9	CO 24189	CHAIN COVER	EA	1
10	DP 23608	DISTANCE PIECE	EA	1
11	FCHGA34D	3/4" PITCH DUPLEX CHAIN	FT	2
12	FCLGA34D	CHAIN CONNECTING LINK	EA	1
13	FPSMB325	COTTER PIN - $\varnothing 3 \times 25$	EA	1
14	FSATB612	SOCKET CAP SCREW - M6x12	EA	2
15	FSATB620	SOCKET CAP SCREW - M6x20	EA	3
16	FSHTB835	HEX HEAD CAP SCREW - M8x35	EA	4
17	FSGTB55	GRUB SCREW - M5x5	EA	1
18	FSGTB810	GRUB SCREW - M8x10	EA	1
19	FSATB1640	SOCKET CAP SCREW - M16x40	EA	1
20	FSHTB610	HEX HEAD SCREW - M6x10	EA	14
21	FSHTB1235	HEX HEAD SCREW - M12x35	EA	4
22	FSHTB1265	HEX HEAD SCREW - M12x65	EA	4
23	FSHTB2060	HEX HEAD SCREW - M20x60	EA	8
24	FWSSB6	SPRING WASHER - M6	EA	17
25	FWSSB8	SPRING WASHER - M8	EA	4
26	FWSSB20	SPRING WASHER - M20	EA	8
27	FWPMB16	PLAIN WASHER - M16	EA	1
28	FWPMB8	PLAIN WASHER - M8	EA	4
29	FRIAB3211	RIVETS	EA	8
30	GU 22680	OPERATING SCRE GUIDE	EA	1
31	JO 22079	SOFT ANNEALED COPPER JOINT	EA	1
32	LA 22059	PRODUCT LABEL	EA	1
33	LE 24054	VALVE OPERATING LEVER	EA	1
34	MS 24025	MECHANICAL STOP	EA	1
35	NU 23646	OPERATING SCREW NUT	EA	1
36	PI 23838	19 TOOTH 3/4" PITCH DUPLEX PINION	EA	1
37	PL 24322	VX-A-MMEDIA (HPW) BACKPLATE	EA	1
38	PRX01-504MSZN	CLIP FOR FASTENER	EA	2
39	PRX20-101MSZN	LATCH FOR FASTENER	EA	2
40	RI 22072	SPLIT RING	EA	1
41	SH 23073-1	SHIMS	EA	4
42	SH 23073-2	SHIMS	EA	4
43	SH 23073-3	SHIMS	EA	4
44	SH 23328	VALVE MECH. BEARING SHAFT ASSY.	EA	1
45	TO CONTRACT	FEED TUBE	EA	1
46	TO CONTRACT	STEAM LANCE TUBE	EA	1
47	TO CONTRACT	HPW LANCE TUBE	EA	1
48	TO CONTRACT	LIMIT SWITCH	EA	2
49	TO CONTRACT	LIMIT SWITCH FASTENERS	EA	4
50	TO CONTRACT	VALVE	EA	1
51	TO CONTRACT	POWER JUNCTION BOX	EA	1
52	TO CONTRACT	CONTROL JUNCTION BOX	EA	1
53	TO CONTRACT	GEARBOX	EA	1
54	TO CONTRACT	ELECTRIC MOTOR	EA	1
55	TO CONTRACT	BOX SECTION	EA	1
56	TO CONTRACT	NAMEPLATE	EA	1
57	TO CONTRACT	STEAM PRESSURE TRANSMITTER ASSY.	EA	1
58	TO CONTRACT	INTERNAL WALLBOX ASSY	EA	1

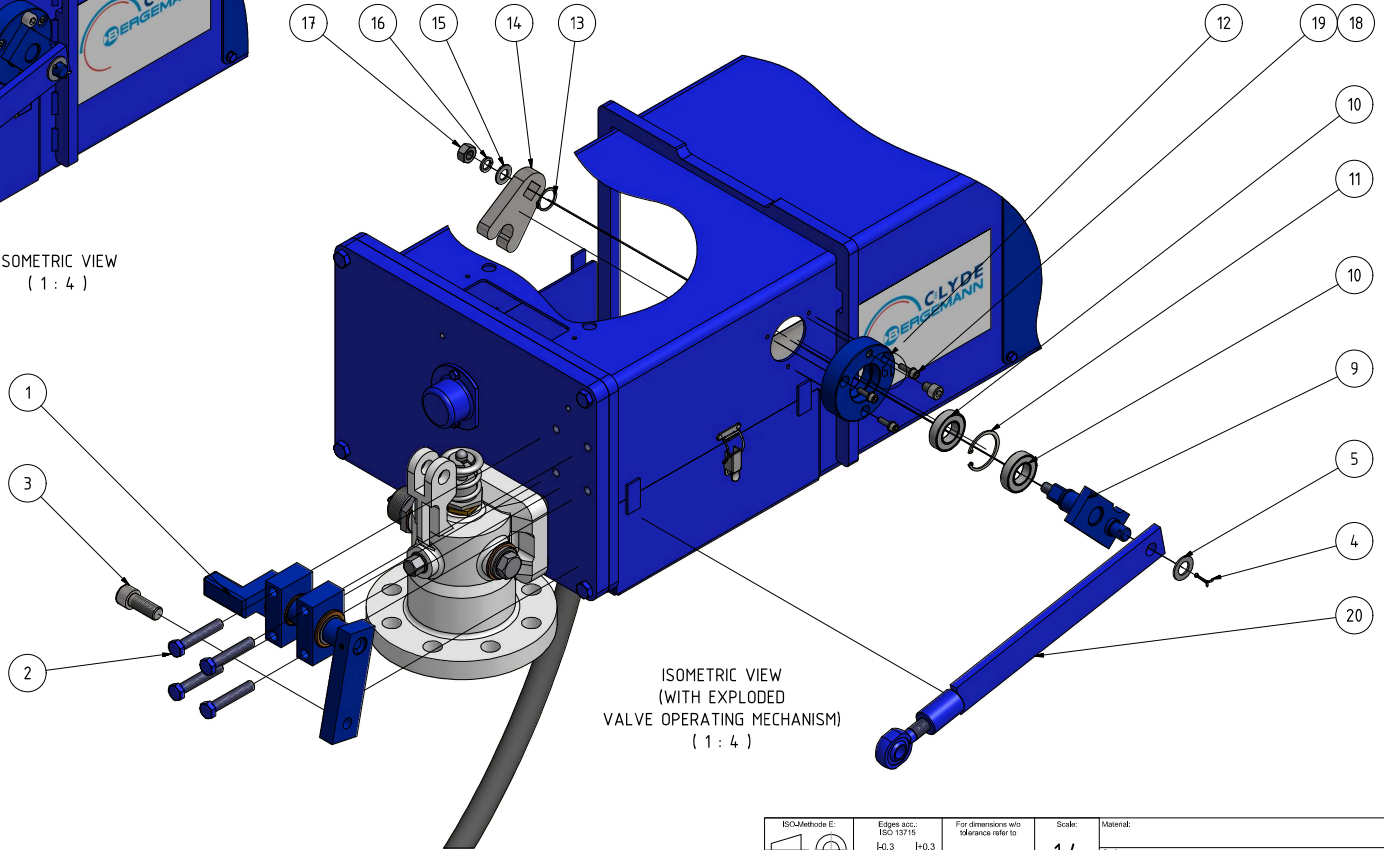
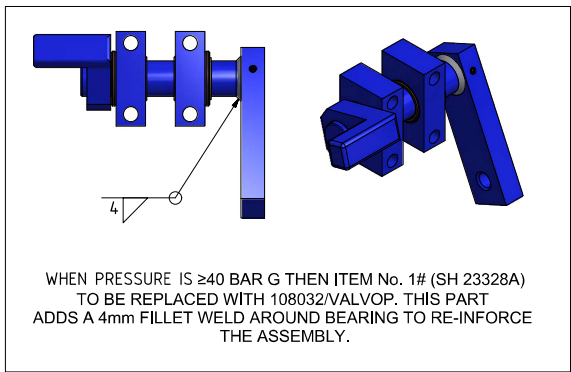


WARNING! DANGER OF INJURY!
REFER TO SAFETY SECTION OF MANUAL
FOR SAFETY GUIDELINES.

ISO-Metric	Edges acc. to ISO 13715	For dimensions with tolerance refer to ISO 2768 mK	Scale: 1:4	Material: Surface
			Date: 13/08/15 Name: MG Checked: 13/08/15 AC	Drawing Title: VX-A-MMEDIA MAIN ASSEMBLY
 CLYDE BERGEMANN LTD. 47 BROAD STREET, BRIDGETON GLASGOW, SCOTLAND, G402QR		THIS DRAWING IS TO BE CHANGED BY CLYDE BERGEMANN CAD SYSTEM ONLY. THE DRAWING IS THE PROPERTY OF CLYDE BERGEMANN LIMITED. IT SHOULD NOT BE COPIED, REPRODUCED, EITHER WHOLLY OR IN PART, OR EITHER IN ANY MANNER OR BY ANY MEANS WITHOUT THE WRITTEN CONSENT OF CLYDE BERGEMANN LIMITED.		Drawing No.: Rev. No.: Sheet: 1 / 1 Mass: Format: A3



ISOMETRIC VIEW
(1 : 4)



ISOMETRIC VIEW
(WITH EXPLODED
VALVE OPERATING MECHANISM)
(1 : 4)

PARTS LIST			
ITEM	QTY	PART NUMBER	DESCRIPTION
1	1	SH 23328	VALVE OP. BEARING SHAFT
2	1	FSHTB1265	HEX HEAD SET SCREW
3	1	FSATB1640	CAP SCREW
4	1	FPSMB325	COTTER PIN
5	1	FWPMB16	PLAIN WASHER
6	1	OL 23334A	VALVE OP. LINKAGE ASSY.
7	1	FSATB1012	CAP SCREW
8	1	FSATB620	CAP SCREW
9	1	FWSSB6	SPRING WASHER
10	1	BBRBB4.725	SINGLE ROW RADIAL BEARING
11	1	FCISB47	INTERNAL CIRCLIP
12	1	PL 23333	VALVE OP. PLATE
13	1	FCESB25	EXTERNAL CIRCLIP
14	1	CT 18228A	CAM TRIGGER
15	1	FWPMB12	PLAIN WASHER
16	1	FWSSB12	SPRING WASHER
17	1	FNHTB12	HEX NUT
18	3	FWSSB6	SPRING WASHER
19	3	FSATB620	SOCKET HEAD CAPSCREW
20	1	LE 24054	OP. LEVER



WARNING! DANGER OF INJURY!
REFER TO SAFETY SECTION OF MANUAL
FOR SAFETY GUIDELINES.

ISO Methods E	Edges acc. to ISO 13715	For dimensions with tolerance refer to	Scale:	Material:
		ISO 2768 mK	1:4	Surface:
		Date	Name	Drawing Title:
		22/09/15	NM	VX-A-MULTIMEDIA VALVE OP. MECHANISM ASSEMBLY
		Checked	AC	
		THIS DRAWING IS TO BE CHANGED IN CLYDE BERGEMANN CAD-SYSTEM ONLY		
CLYDE BERGEMANN LTD. 47 BROAD STREET, BRIDGETON GLASGOW, SCOTLAND, G402QR		THIS DRAWING IS THE PROPERTY OF CLYDE BERGEMANN LIMITED. IT SHOULD NOT BE COPIED, REPRODUCED OR IN ANY MANNER COMMUNICATED TO AN OUTSIDE PARTY WITHOUT WRITTEN CONSENT FROM CLYDE BERGEMANN LIMITED.		Drawing No.: Rev. No.: Sheet: 1 / 1 Mass: Format: A3