

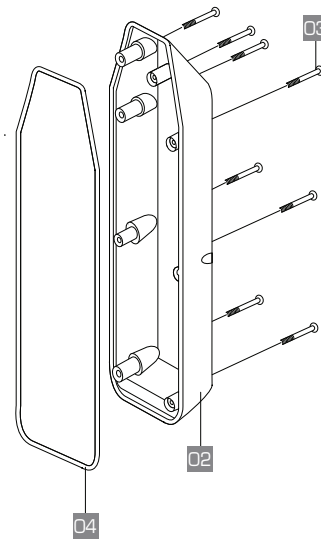
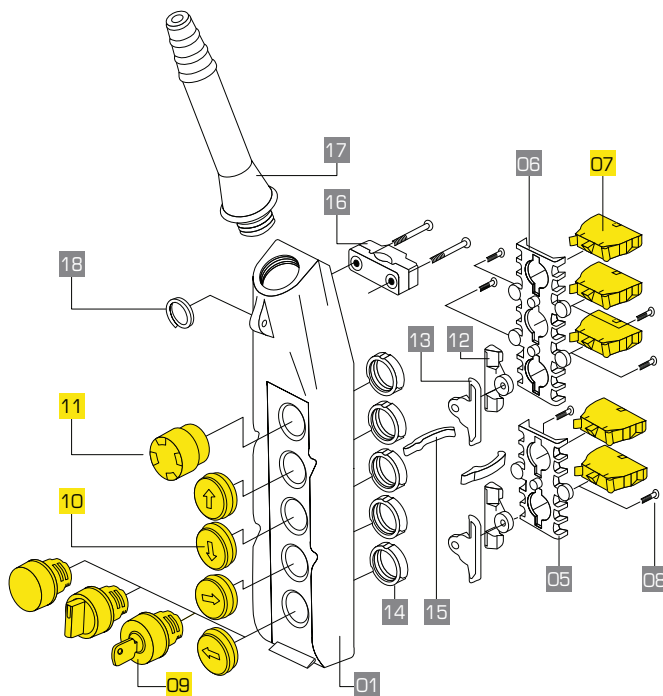
Pendant stations

PL Series for auxiliary controls and direct switching power circuits
Assembly

PL SERIES STANDARD VERSIONS

PL - P02 - P03 Single row

Note: For execution "empty enclosures in kit", the parts "yellow underline" 07, 09, 10 and 11 will must be order separatly.

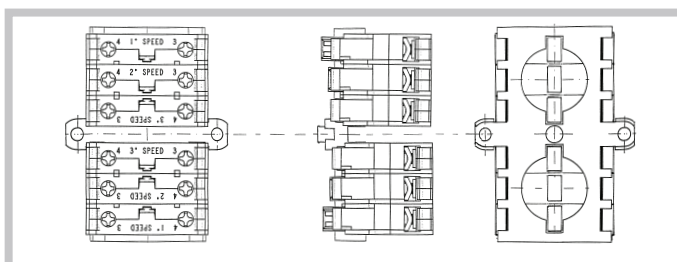


ASSEMBLY INSTRUCTION FOR 1^a - 2^a SPEED CONTACT BLOCKS

PL004010

PL004003 1^a speed

PL004004 2^a speeds



N°	REF. NO.	DESCRIPTION	QTY.
01	PL00100.	SINGLE ROW PENDANT STATION COVER...PUSH BUTTONS	1
02	PL00200.	DOUBLE ROW PENDANT STATION BASE...PUSH BUTTONS	1
03	11606022	SELF TAPPING STAINLESS STEEL INOX SCREW 4X30	..
04	11901028	RUBBER GASKET Ø 2,5	MT..
05	PL003001	2-HOLES CONTACT BLOCKS SUPPORT	..
06	PL003002	3-HOLES CONTACT BLOCKS SUPPORT	..
	PL004001	1 NC CONTACT BLOCK	..
	PL004002	1 NO CONTACT BLOCK	..
07	PL004010	2 SPEEDS 1NO+1NO CONTACT BLOCK	..
	PL004007	LAMP HOLDER	..
08	11607007	SELF TAPPING SCREW 3,9X13	..
	PL00700.	ROTARY SWITCH	..
09	PL00600.	KEY SWITCH	..
	PL00800.	PILOT LIGHT	..
10	PL0050..	ENGRAVED PUSH BUTTONS	..
11	PL013001	MUSHROOM OPERATOR TURN TO RELEASE WITH VISION	1
12	PL011002	BOTTOM MECHANICAL INTERLOCK	..
13	PL011001	TOP MECHANICAL INTERLOCK	..
14	11705100	M. 22 ZAMA LOCK NUTS	..
15	PL012001	CABLE CLAMP LEVER	..
16	12904014	COMPLETE CABLE CLAMP	1
	12906006	PL05 CABLE SLEEVE	..
	12906004	PL07 - PLO8 CABLE SLEEVE	..
	12906005	PL10 - PL12 CABLE SLEEVE	..
18	12003009	SUNSPENSION RING	1