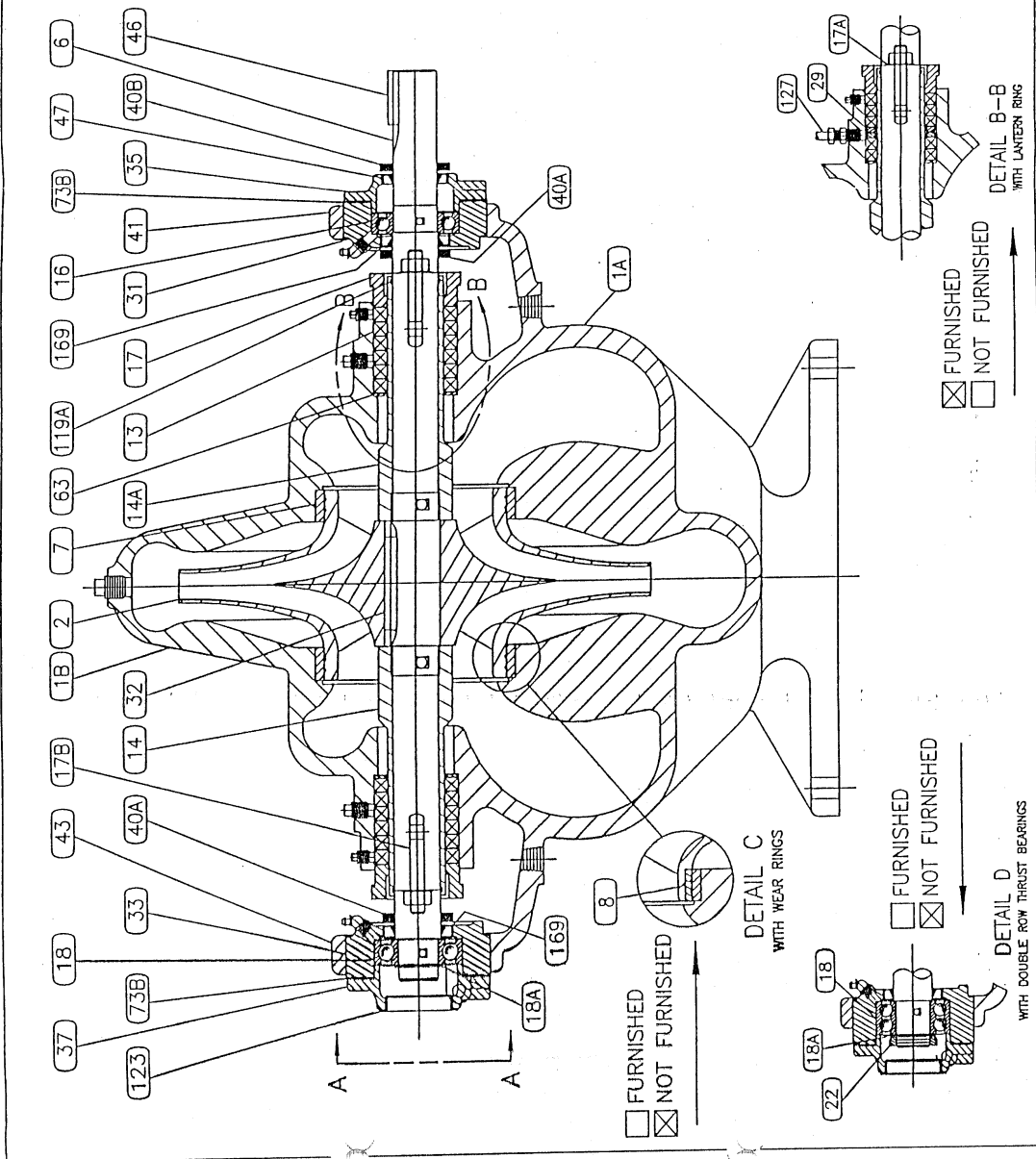


ITEM NUMBER	DESCRIPTION	MATERIAL	QTY	ASTM NO.
1A, 1B	UPPER AND LOWER CASING	EPOXY LINED CAST IRON	1	A48 CLASS 40
2	IMPELLER	316SS	1	A743 GR.CF8M
6	PUMP SHAFT	316SS	1	A276-49T
7	CASING RING	316SS	1	A743 GR.C8FM
8	N/A		1	---
13	PACKING RING	NON-ASBESTOS/GRAPHITE	1	B40
14	SHAFT SLEEVE (RH)	316SS	1	A-276-65
14A	SHAFT SLEEVE (LH)	316SS	1	A-276-65
119A	O RING, SHAFT SLEEVE	BUNA N RUBBER	1	---
119B	O RING, SHAFT SLEEVE	BUNA N RUBBER	1	---
16	INBOARD BALL BEARING	STEEL ASSEMBLY	1	---
17	PACKING GLAND	316SS	1	A743 GR.C8FM
17A	GLAND CLIP	STAINLESS STEEL	1	A-276-82(d)
17B	GLAND BOLT	STAINLESS STEEL	1	F593
18	OUTBOARD BALL BEARING	STEEL ASSEMBLY	1	---
18A	BEARING RETAINING RING	STEEL	1	---
29	LANTERN RING	TFE	1	---
31	INBOARD BEARING HOUSING	CAST IRON	1	A48
32	IMPELLER KEY	STAINLESS STEEL	1	A582-80
33	OUTBOARD BEARING HOUSING	CAST IRON	1	A48
35	INBOARD BRG. HOUSING COVER	CAST IRON	1	A48
37	OUTBOARD BRG. HOUSING COVER	CAST IRON	1	A48
40A	INBOARD DEFLECTOR	RUBBER	1	---
40B	OUTBOARD DEFLECTOR	RUBBER	1	---
41	INBOARD BRG. HOUSING CAP	CAST IRON	1	A48
43	OUTBOARD BRG. HOUSING CAP	CAST IRON	1	A48
46	COUPLING KEY	STEEL	1	A108
47	INBOARD BEARING COVER SEAL	STEEL/RUBBER ASSEMBLY	1	---
63	STUFFING BOX BUSHING	316SS	1	A-276-65
73A	CASING GASKET	VEGETABLE FIBER	1	---
73B	BEARING COVER GASKET	FIBER	1	---
123	BEARING END COVER	STEEL	1	A36
127	WATER SEAL PIPING	STAINLESS STEEL	1	---
169	BEARING HOUSING SEAL	STEEL/RUBBER ASSEMBLY	1	---
22	BEARING LOCKNUT	STEEL	1	---
80	MECH. SEAL ROTATING ELEMENT	BUNA/CARBON/ST STL	1	N/A
80A	SHAFT COLLAR	STAINLESS STEEL	1	N/A
65	MECH. SEAL STATIONARY ELEMENT	NI RESIST	1	N/A

NOTE: STANDARD MATERIALS AND ALL OPTIONS SHOWN



Peerless Pump Company

PREPARED BY CAT DATE 12-8-97

THIS PRINT CERTIFIED FOR:

PROPOSAL  APPROVAL  CONSTRUCTION

APP. BY CAT DATE 12-8-97

DRAWING NO. BL190843

P.O. BOX 7026  
INDIANAPOLIS, IN 46207

INVOICE No.	SERIAL No.	PUMP TYPE AND SIZE	No. STAGES	CAPACITY G.P.M.	TOTAL HEAD FT.	SPEED R.P.M.	ROTATION	H.P.	FRAME No.	PH. 3	HZ. 50	V. 380	ENCL. TFEFC
190843HF1	190843	10AEF20	1	2655	226.4	1480	LH	250	449TS				

ORDER NO.: P-710262 ITEM NO.: N/A

SOLD TO: PISCO JAPAN, LTD.

USER: WAYANG WINDU GEOTHERMAL POWER PLANT