



Chapter 4-2

Primary Air Fan

Contact Address

For any question or any clarification required, please do not hesitate to contact Mitsubishi Heavy Industries, Ltd. (MHI) through the following address.

Mitsubishi Heavy Industries, Ltd.

Energy Transition & Power Headquarters, Energy Systems,

Steam Power Maintenance Innovation Business Division,

Nagasaki Solution Business Department, Overseas Business Group C,

1-1, Akunoura Machi, Nagasaki 850-8610.

Japan.

Tel. No: +81-80-9938-0035

Working Hours: 08.30 hrs. to 17.30 hrs. JPT (Except on Saturdays, Sundays and Holidays)

4-2 Primary Air Fan

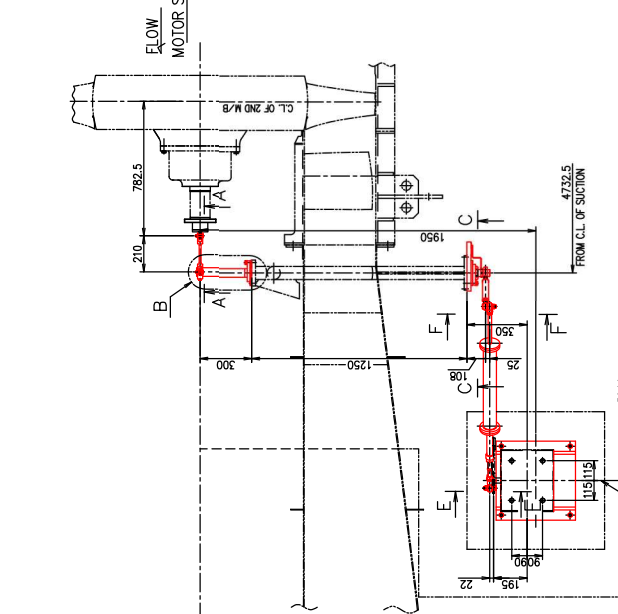
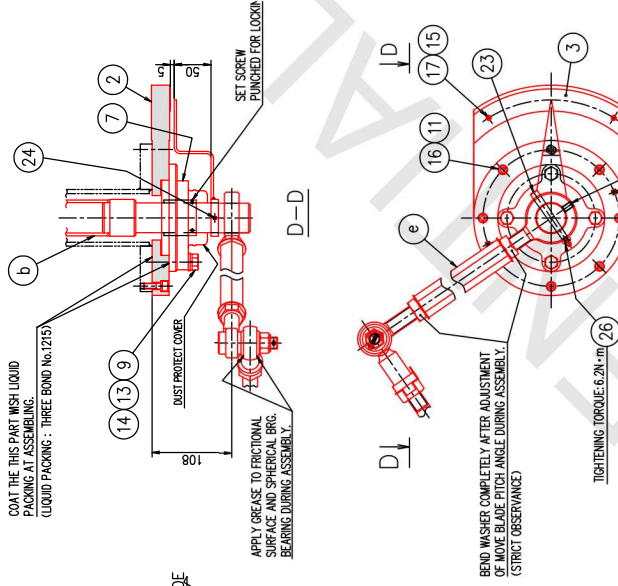
4-2.1 Fan Specification and Construction Details

4-2.1.1 Specification

TABLE 4-2.1.1 PRIMARY AIR FAN

Subject		Specifications
Equipment number		Unit5:50HFE01AN101,50HFE11AN101 Unit6:60HFE01AN101,60HFE11AN101
Quantity		Two (2) per unit
Fan	Manufacturer	MHPS
	Model	ML-H2-R125/204
	Type	Indoor type Axial Fan with Blade Pitch Control
Coupling	Manufacturer	KTR
	Type	Flexible Coupling
Bearing	Manufacturer	JTEKT Corporation
	Type	Anti-Friction bearing (MHPS special type)
Major Material	Casing	General carbon steel
	Moving Blade	Forged aluminum
	Rotor	Forged steel
	Main Shaft	Forged steel
	Bearing (Box/Body)	Cast iron/bearing steal & carburizing steel
	Coupling	General carbon steel
Synchronous speed		1,500min ⁻¹
Blades/stage		16/2
Design performance characteristics		
Direction of Rotation		Clockwise (Viewed from motor side)
Capacity (each fan)		11,400 m ³ /min
Suction Press		-4.9 mbar (g)
Discharge Press		162.8 mbar (g)
Fluid		Air
Fluid temperature at inlet (design)		35°C
Fluid density (design)		1.128 kg/m ³

MARKS	DESCRIPTION	MATERIALS (ASTM/JIS)	1-PC WEIGHT (kg)
1	LEVER	A36/SS400	0.86
2	STAND FOR SCALE PLATE	A36/SS400	8.2
3	SCALE PLATE	E58 UNS No.C28000/2800P-11/2H	0.16
4	PIECE 40x54	A53 GRADE A/STPI370	1.0
5	PIN 10x42	A576 G10450-07/2452-0T	0.033
6	SPHERICAL BEARING PB10	-	0.039
7	DRIVE UNIT	-	2.0
8	BALL BEARING UNIT UFG208 H7	-	2.0
9	BOLT M12x45	A36/SS400	0.059
10	SET SCREW M8x14	A179 TYPE 304/SS304-S	0.006
11	SOCKET HEAD BOLT M8x25	A193 G-87-07/52A435-0T	0.017
13	WASHER M12	A36/SS400	0.006
14	SPRING WASHER M12	A713 G10640/SHRH62	0.007
15	SPRING WASHER M8	A713 G10640/SHRH62	0.001
16	WASHER M8	WT-7/SS304	0.001
17	SCREW M4x6	A588 G10130/SHRH12	0.001
18	SET SCREW M8x20	A179 TYPE 304/SS304-S	0.008
19	SCREW M8x6	A179 TYPE 304/SS304-S	0.001
20	SCREW M8x6	A179 TYPE 304/SS304-S	0.001
21	TAPER PIN 8x36	A518 G10130/SHRH12	0.001
22	THREAD END TAPER PIN 10x85	A576 G10450-07/2452-N	0.015
23	THREAD END TAPER PIN 8x75	A576 G10350-07/2452-N	0.06
24	SPRING PIN 5x50	A868 TYPE W G/G/SSKM	0.005
25	U-NUT M8	A36/SS400	0.005
26	CONNECTING ROD	A36/SS400	0.002
27	PIN 20x63	A193 G-87/52A435	0.55
28	SET SCREW M8x6	A179 TYPE 304/SS304-S	0.001
29	BOLT M12x35	A576 G10450-07/2452-0T	0.095
30	WASHER M8	A36/SS400	0.001
31	OPERATING SHAFT	A36/SS400	0.11
b	DETACHING WASSY	-	10.7
c	POINTER	-	0.65
d	LEVER	-	1.84
e	LEVER	-	1.80
f	STAND FOR DRIVE UNIT	-	66



NOTES

- THIS DRAWING SHOWS NEUTRAL POSITION OF MOVING BLADE AT ANGLE 0°, BUT ASSEMBLY WORK SHOULD BE PERFORMED ON A FULL CLOSE BLADE POSITION.
- OPERATING DIRECTION OF DRIVE UNIT LEVER
- VIEW FROM LEVER SIDE : B - PAN ON (CLOSE-OPEN)
- DURING ASSEMBLY PUNCH THE SCREWS AND TAPER PINS IN 2 PLACES ON THE CIRCUMFERENCE .
- APPLY GREASE TO FRICTIONAL SURFACE AND SPHERICAL BEARING DURING ASSEMBLY.

CONFIDENTIAL
 THIS DOCUMENT IS THE PROPERTY OF MITSUBISHI POWER LTD. AND CONFIDENTIAL. IT MUST BE KEPT UNOPENED AND UNREPRODUCED. ANY INFORMATION CONTAINED HEREIN IS UNCLASSIFIED FOR THE USE OF OTHERS WITHOUT THE WRITTEN PERMISSION OF MITSUBISHI POWER LTD. THERE IS TO BE HANDED OVER OR COMMUNICATED TO A THIRD PARTY IN ANY WAY. BREACH OF INFRACTION OF ANY KIND WILL LEAD TO LEGAL ACTION.

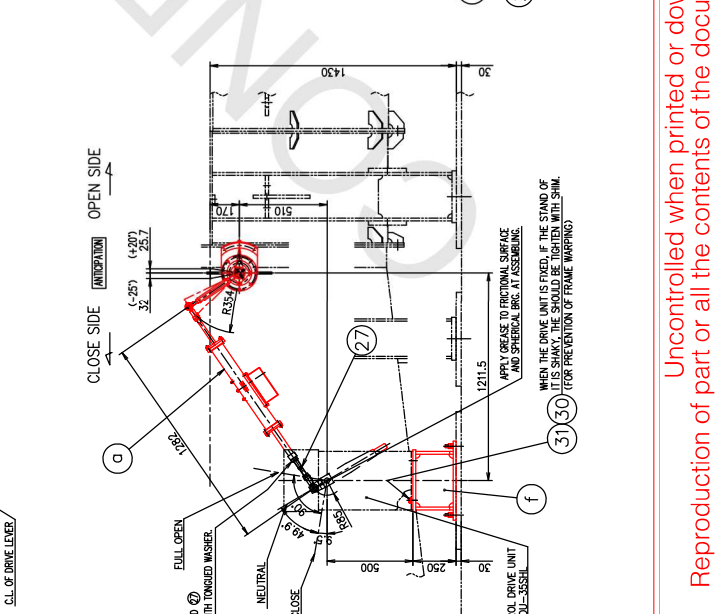
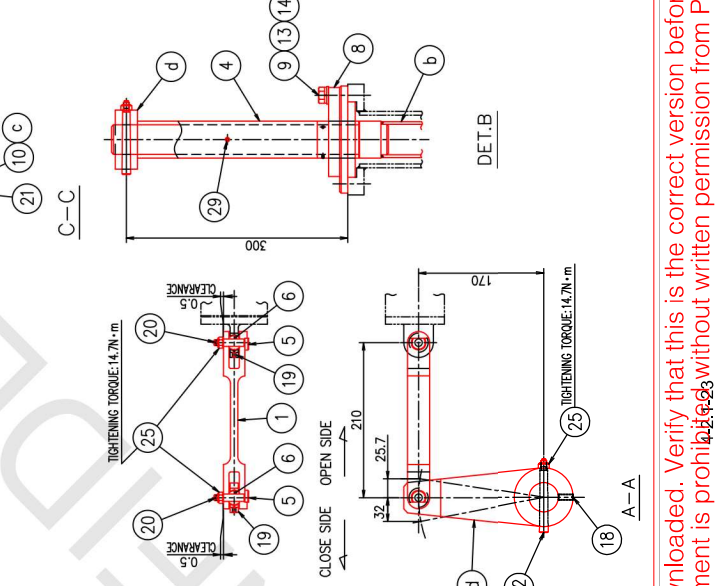


FIGURE 4-2.1.8 PILOT VALVE DRIVE ASSEMBLY

Uncontrolled when printed or downloaded. Verify that this is the correct version before use.
 Reproduction of part or all the contents of the document is prohibited without written permission from PT. Bhumi Jepara Service