

Table A6-7**Inner Pipig for Impeller Casing Consumables**

NOTE

- Remark ※ : Parts to be replaced at each regular inspection.
- Not Remark ※ : Replace with a new one depending on the condition.
- "Order Q'ty" shows parts quantity for two fans.
- (Quantity required normal maintenance.)

EQUIPMENT No.	MARKS	DESCRIPTION	PART NO	1-PIECE WEIGHT (kg)	REMARK	ORDER Q'TY	DELIVERY TIME (Month)	REPLACEMENT SCHEDULE (Year)
(G) I N N E R P I P I G F O R I M P E L L E R C A S I N G	1	SUPPLY OIL PIPE 10A × S8 (FOR A)	FIG-7-①	3		1		
	2	SUPPLY OIL PIPE 20A × S8 (FOR A)	FIG-7-②	4.7		1		
	3	BRG. DRAIN PIPE 15A × S4 (FOR A)	FIG-7-③	0.2		1		
	4	RETURN OIL PIPE 50A × S4 (FOR A)	FIG-7-④	2.2		1		
	5	GAS VENT PIPE 10A × S4 (FOR A)	FIG-7-⑤	0.77		1		
	6	S-90E 10 × S8 (FOR A)	FIG-7-⑥	0.150		11		
	7	S-90E 15 × S8 (FOR A)	FIG-7-⑦	0.250		1		
	8	S-90E 20 × S8 (FOR A)	FIG-7-⑧	0.48		2		
	9	B-90ES 50 × S4 (FOR A)	FIG-7-⑨	0.434		2		
	10	S-ST 20 × S8 (FOR A)	FIG-7-⑩	0.60		4		
	11	FLANGE #150-15 (FOR A)	FIG-7-⑪	0.41		1		
	12	FLANGE #150-20 (FOR A)	FIG-7-⑫	0.57		1		
	13	FLANGE #150-50 (FOR A)	FIG-7-⑬	2.09		1		
	14	FLANGE 10K-10 (FOR A)	FIG-7-⑭	0.52		2		
	15	FLANGE 10K-15 (FOR A)	FIG-7-⑮	0.57		1		
	16	FLANGE 10K-50 (FOR A)	FIG-7-⑯	1.88		1		
	17	FLANGE (FOR A)	FIG-7-⑰	0.116		3		
	18	FLANGE (FOR A)	FIG-7-⑱	0.257		2		
	19	BLIND FLANGE 10K-15 (FOR A)	FIG-7-⑲	0.610		1		
	20	BLIND FLANGE 10K-50 (FOR A)	FIG-7-⑳	2.23		1		
	21	GASKET #150-15 (FOR A)	FIG-7-㉑	0.004	※	1	4	every 4years or during fan overhaul
	22	GASKET #150-20 (FOR A)	FIG-7-㉒	0.005	※	1	4	every 4years or during fan overhaul
	23	GASKET #150-50 (FOR A)	FIG-7-㉓	0.015	※	1	4	every 4years or during fan overhaul
	24	GASKET 10K-10 (FOR A)	FIG-7-㉔	0.005	※	2	4	every 4years or during fan overhaul
	25	GASKET 10K-15 (FOR A)	FIG-7-㉕	0.006	※	2	4	every 4years or during fan overhaul
	26	GASKET 10K-50 (FOR A)	FIG-7-㉖	0.015	※	2	4	every 4years or during fan overhaul
	27	GASKET (FOR A)	FIG-7-㉗	0.001	※	3	4	every 4years or during fan overhaul
	28	GASKET (FOR A)	FIG-7-㉘	0.003	※	2	4	every 4years or during fan overhaul
	29	BOLT M8 × 25 (FOR A)	FIG-7-㉙	0.015		8		
	30	BOLT M12 × 35 (FOR A)	FIG-7-㉚	0.05		12		
	31	BOLT M12 × 45 (FOR A)	FIG-7-㉛	0.059		4		
	32	BOLT M14 × 50 (FOR A)	FIG-7-㉜	0.09		8		
	33	BOLT M16 × 45 (FOR A)	FIG-7-㉝	0.111		8		
	34	BOLT M18 × 40 (FOR A)	FIG-7-㉞	0.145		4		
	35	HEX. SOCKET HEAD BOLT M6 × 20 (FOR A)	FIG-7-㉟	0.007		18		
	36	SPRING WASHER M6 (FOR A)	FIG-7-㊱	0.001	※	18	4	during fan overhaul
	37	SPRING WASHER M8 (FOR A)	FIG-7-㊲	0.001	※	8	4	during fan overhaul
	38	SPRING WASHER M12 (FOR A)	FIG-7-㊳	0.007	※	16	4	during fan overhaul
	39	SPRING WASHER M14 (FOR A)	FIG-7-㊴	0.009	※	8	4	during fan overhaul
	40	SPRING WASHER M16 (FOR A)	FIG-7-㊵	0.011	※	8	4	during fan overhaul

CONFIDENTIAL

THIS DOCUMENT IS THE PROPERTY OF MITSUBISHI HITACHI POWER SYSTEMS, LTD.(MHPS) AND CONFIDENTIAL IT MUST NEITHER BE COPIED NOR USED FOR ANY PURPOSE OR MANNER OTHER THAN EXPRESSLY PERMITTED BY MHPS OR WITH A PRIOR WRITTEN CONSENT OF MHPS NEITHER IS IT TO BE HANDED OVER NOR COMMUNICATED TO A THIRD PARTY IN ANY WAY. BREACH OR INFRINGEMENT OF ANY KIND WILL LEAD TO LEGAL ACTION.

Uncontrolled when printed or downloaded. Verify that this is the correct version before use.
 Reproduction of part or all the contents of the document is prohibited without written permission from PT. Bhumi Jebara Service

Table A6-7**Inner Pipig for Impeller Casing Consumables**

NOTE

- Remark ※ : Parts to be replaced at each regular inspection.
- Not Remark ※ : Replace with a new one depending on the condition.
- "Order Qty" shows parts quantity for two fans.
- (Quantity required normal maintenance.)

EQUIPMENT No.	MARKS	DESCRIPTION	PART NO	1-PIECE WEIGHT (kg)	REMARK	ORDER Q'TY	DELIVERY TIME (Month)	REPLACEMENT SCHEDULE (Year)
(G) I N N E R P I P I G F O R I M P E L L E R C A S I N G	41	SPRING WASHER M18 (FOR A)	FIG-7-41	0.015	※	4	4	during fan overhaul
	42	NUT M12 (FOR A)	FIG-7-42	0.011		4		
	43	NUT M14 (FOR A)	FIG-7-43	0.23		4		
	44	INSERT REDUCER 20 × 10 (FOR A)	FIG-7-44	—		5		
	51	SUPPLY OIL PIPE 10A × S8 (FOR B)	FIG-7-51	3.2		1		
	52	SUPPLY OIL PIPE 20A × S8 (FOR B)	FIG-7-52	4.1		1		
	53	BRG. DRAIN PIPE 15A × S4 (FOR B)	FIG-7-53	0.2		1		
	54	RETURN OIL PIPE 50A × S4 (FOR B)	FIG-7-54	2.2		1		
	55	GAS VENT PIPE 10A × S4 (FOR B)	FIG-7-55	0.77		1		
	56	S-90E 10 × S8 (FOR B)	FIG-7-56	0.150		11		
	57	S-90E 15 × S8 (FOR B)	FIG-7-57	0.250		1		
	58	S-90E 20 × S8 (FOR B)	FIG-7-58	0.48		2		
	59	B-90ES 50 × S4 (FOR B)	FIG-7-59	0.434		2		
	60	S-ST 20 × S8 (FOR B)	FIG-7-60	0.60		4		
	61	FLANGE #150-15 (FOR B)	FIG-7-61	0.41		1		
	62	FLANGE #150-20 (FOR B)	FIG-7-62	0.57		1		
	63	FLANGE #150-50 (FOR B)	FIG-7-63	2.09		1		
	64	FLANGE 10K-10 (FOR B)	FIG-7-64	0.52		2		
	65	FLANGE 10K-15 (FOR B)	FIG-7-65	0.57		1		
	66	FLANGE 10K-50 (FOR B)	FIG-7-66	1.88		1		
	67	FLANGE (FOR B)	FIG-7-67	0.116		3		
	68	FLANGE (FOR B)	FIG-7-68	0.257		2		
	69	BLIND FLANGE 10K-15 (FOR B)	FIG-7-69	0.610		1		
	70	BLIND FLANGE 10K-50 (FOR B)	FIG-7-70	2.23		1		
	71	GASKET #150-15 (FOR B)	FIG-7-71	0.004	※	1	4	every 4years or during fan overhaul
	72	GASKET #150-20 (FOR B)	FIG-7-72	0.005	※	1	4	every 4years or during fan overhaul
	73	GASKET #150-50 (FOR B)	FIG-7-73	0.015	※	1	4	every 4years or during fan overhaul
	74	GASKET 10K-10 (FOR B)	FIG-7-74	0.005	※	2	4	every 4years or during fan overhaul
	75	GASKET 10K-15 (FOR B)	FIG-7-75	0.006	※	2	4	every 4years or during fan overhaul
	76	GASKET 10K-50 (FOR B)	FIG-7-76	0.015	※	2	4	every 4years or during fan overhaul
	77	GASKET (FOR B)	FIG-7-77	0.001	※	3	4	every 4years or during fan overhaul
	78	GASKET (FOR B)	FIG-7-78	0.003	※	2	4	every 4years or during fan overhaul
	79	BOLT M8 × 25 (FOR B)	FIG-7-79	0.015		8		
	80	BOLT M12 × 35 (FOR B)	FIG-7-80	0.05		12		
	81	BOLT M12 × 45 (FOR B)	FIG-7-81	0.059		4		
82	BOLT M14 × 50 (FOR B)	FIG-7-82	0.09		8			
83	BOLT M16 × 45 (FOR B)	FIG-7-83	0.111		8			
84	BOLT M18 × 40 (FOR B)	FIG-7-84	0.145		4			
85	HEX. SOCKET HEAD BOLT M6 × 20 (FOR B)	FIG-7-85	0.007		18			

CONFIDENTIAL

THIS DOCUMENT IS THE PROPERTY OF MITSUBISHI HITACHI POWER SYSTEMS, LTD.(MHPS) AND CONFIDENTIAL. IT MUST NEITHER BE COPIED NOR USED FOR ANY PURPOSE OR MANNER OTHER THAN EXPRESSLY PERMITTED BY MHPS OR WITH A PRIOR WRITTEN CONSENT OF MHPS NEITHER IS IT TO BE HANDED OVER NOR COMMUNICATED TO A THIRD PARTY IN ANY WAY. BREACH OR IN FRINGEMENT OF ANY KIND WILL LEAD TO LEGAL ACTION.

Uncontrolled when printed or downloaded. Verify that this is the correct version before use.
 Reproduction of part or all the contents of the document is prohibited without written permission from PT. Bhumi Jebara Service

Table A6-7
Inner Pipig for Impeller Casing Consumables

NOTE
 •Remark ※ : Parts to be replaced at each regular inspection.
 •Not Remark ※ : Replace with a new one depending on the condition.
 •"Order Qty" shows parts quantity for two fans.
 •(Quantity required normal maintenance.)

EQUIPMENT No.	MARKS	DESCRIPTION	PART NO	1-PIECE WEIGHT (kg)	REMARK	ORDER Q'TY	DELIVERY TIME (Month)	REPLACEMENT SCHEDULE (Year)	
(G) I N N E R P I P I G F O R I M P E L L E R C A S I N G	86	SPRING WASHER M6 (FOR B)	FIG-7-86	0.001	※	18	4	during fan overhaul	
	87	SPRING WASHER M8 (FOR B)	FIG-7-87	0.001	※	8	4	during fan overhaul	
	88	SPRING WASHER M12 (FOR B)	FIG-7-88	0.007	※	16	4	during fan overhaul	
	89	SPRING WASHER M14 (FOR B)	FIG-7-89	0.009	※	8	4	during fan overhaul	
	90	SPRING WASHER M16 (FOR B)	FIG-7-90	0.011	※	8	4	during fan overhaul	
	91	SPRING WASHER M18 (FOR B)	FIG-7-91	0.015	※	4	4	during fan overhaul	
	92	NUT M12 (FOR B)	FIG-7-92	0.011		4			
	93	NUT M14 (FOR B)	FIG-7-93	0.23		4			
	94	INSERT REDUCER 20 × 10 (FOR B)	FIG-7-94	—		5			

CONFIDENTIAL
 THIS DOCUMENT IS THE PROPERTY OF MITSUBISHI HITACHI POWER SYSTEMS, LTD.(MHPS) AND CONFIDENTIAL. IT MUST NEITHER BE COPIED NOR USED FOR ANY PURPOSE OR MANNER OTHER THAN EXPRESSLY PERMITTED BY MHPS OR WITH A PRIOR WRITTEN CONSENT OF MHPS NEITHER IS IT TO BE HANDED OVER NOR COMMUNICATED TO A THIRD PARTY IN ANY WAY. BREACH OR INFRINGEMENT OF ANY KIND WILL LEAD TO LEGAL ACTION.

Controlled when printed or downloaded. Verify that this is the correct version before use.
 Reproduction of part or all the contents of the document is prohibited without written permission from PT. Bhumi Jepara Service

CONFIDENTIAL
 THIS DOCUMENT IS THE PROPERTY OF MITSUBISHI HITACHI POWER SYSTEMS, LTD. (MHPS) AND CONFIDENTIAL. IT MUST NEITHER BE COPIED NOR USED FOR ANY PURPOSE OR MANNER OTHER THAN EXPRESSLY PERMITTED BY MHPS OR WITH A PRIOR WRITTEN CONSENT OF MHPS. NEITHER IS IT TO BE HANDED OVER NOR COMMUNICATED TO A THIRD PARTY IN ANY WAY. BREACH OR 'FRINGEMENT' OF ANY KIND WILL LEAD TO LEGAL ACTION.

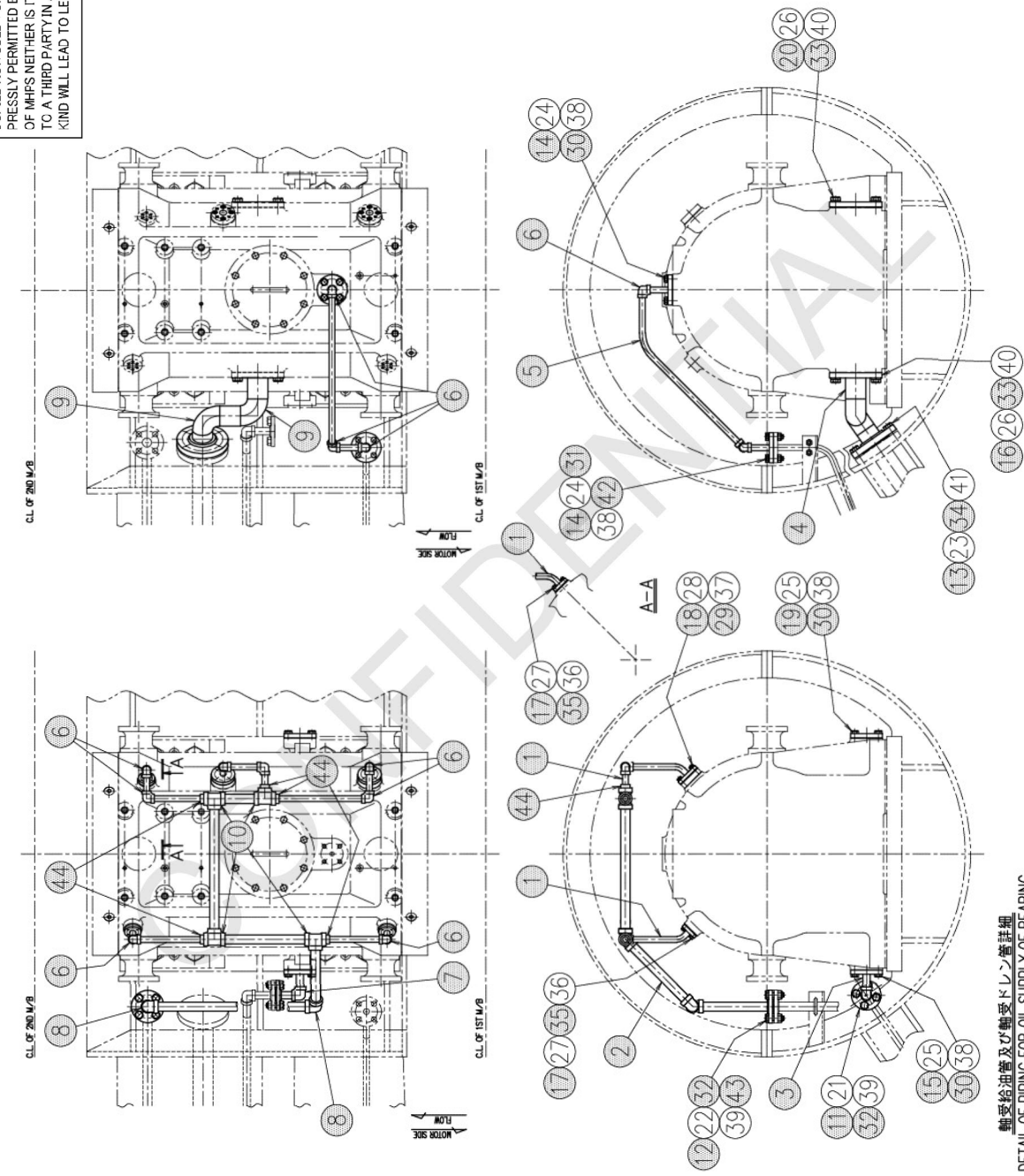


FIG--7-1

A F A N

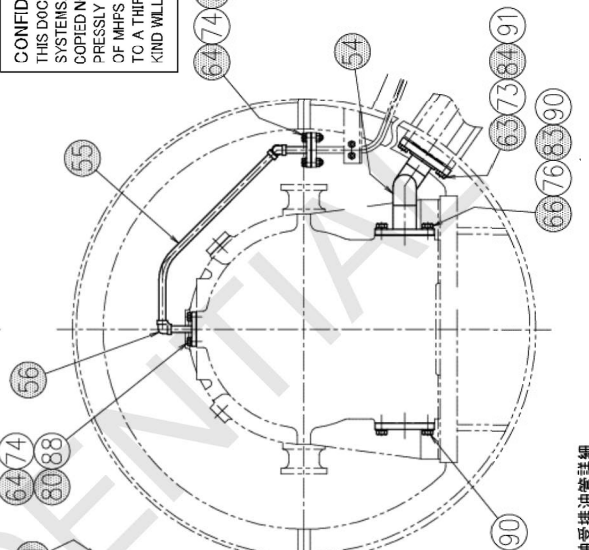
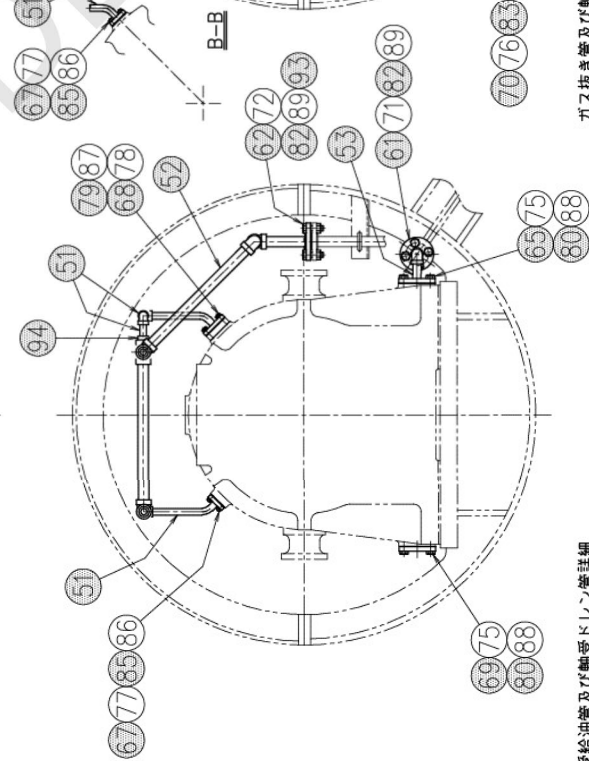
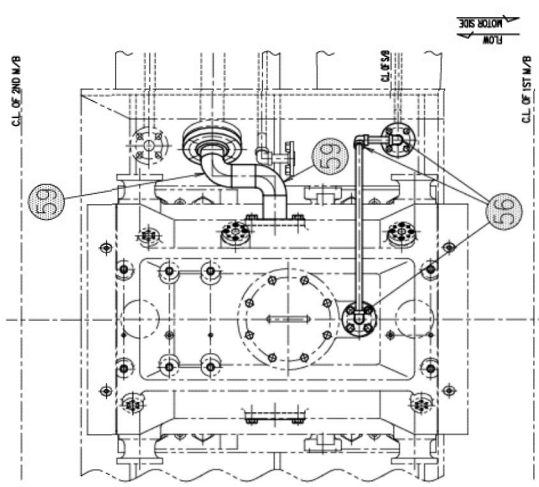
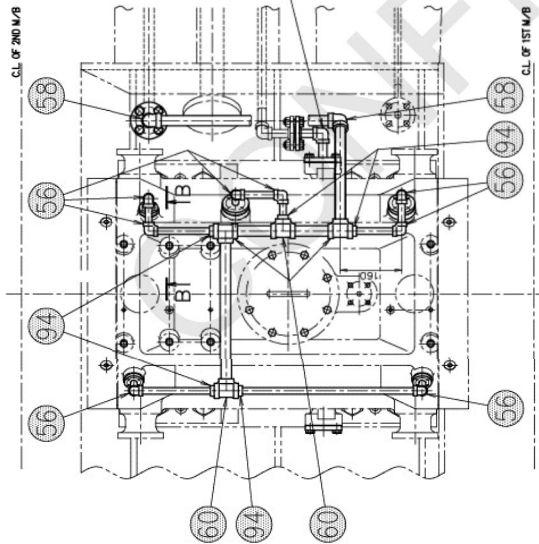
CONSUMABLE PARTS LIST
(INNER PIPING FOR IMPELLER CASING)

ガス抜き管及び軸受排油管詳細
 DETAIL OF PIPING FOR GAS VENT AND
 PIPING FOR OIL RETURN OF BEARING
 (VIEW FROM MOTOR SIDE)

軸受給油管及び軸受ドレン管詳細
 DETAIL OF PIPING FOR OIL SUPPLY OF BEARING
 AND PIPING FOR DRAIN OIL BEARING
 (VIEW FROM MOTOR SIDE)



Uncontrolled when printed or downloaded. Verify that this is the correct version before use.
 Reproduction of part or all the contents of the document is prohibited without written permission from PT. Bhumi Jepera Service



CONFIDENTIAL
 THIS DOCUMENT IS THE PROPERTY OF MITSUBISHI HITACHI POWER SYSTEMS, LTD. (MHP'S) AND CONFIDENTIAL. IT MUST NEITHER BE COPIED NOR USED FOR ANY PURPOSE OR MANNER OTHER THAN EXPRESSLY PERMITTED BY MHP'S OR WITH A PRIOR WRITTEN CONSENT OF MHP'S. NEITHER IS IT TO BE HANDED OVER NOR COMMUNICATED TO A THIRD PARTY IN ANY WAY. BREACH OR 'FRINGEMENT' OF ANY KIND WILL LEAD TO LEGAL ACTION.

FIG--7-2

B F A N

軸受給油管及び軸受ドレン管詳細
 DETAIL OF PIPING FOR OIL SUPPLY OF BEARING AND PIPING FOR DRAIN OIL BEARING
 (VIEW FROM MOTOR SIDE)

ガス抜き管及び軸受排油管詳細
 DETAIL OF PIPING FOR GAS VENT AND PIPING FOR OIL RETURN OF BEARING
 (VIEW FROM MOTOR SIDE)

CONSUMABLE PARTS LIST
(INNER PIPING FOR IMPELLER CASING)