

Table A6-4
Hydraulic Mechanism Assembly Consumables

NOTE

•Remark ※ : Parts to be replaced at each regular inspection.
 •Not Remark ※ : Replace with a new one depending on the condition.
 •"Order Q'ty" shows parts quantity for two fans.
 •(Quantity required normal maintenance.)

EQUIPMENT No.	MARKS	DESCRIPTION	PART NO	1-PIECE WEIGHT (kg)	REMARK	ORDER Q'TY	DELIVERY TIME (Month)	REPLACEMENT SCHEDULE (Year)	
(D)	1	HYDRAULIC CYLINDER	FIG-4-①	83.5		2			
	2	HYDRAULIC CYLINDER COVER	FIG-4-②	130		2			
	3	PISTON	FIG-4-③	22.3		2			
	4	NUT	FIG-4-④	1.7		2			
	5	TIGHTNING PLATE FOR MV PACKING	FIG-4-⑤	3.4		2			
	6	TIGHTNING PLATE FOR MV PACKING	FIG-4-⑥	2.28		2			
	7	BOLT M16 × 50	FIG-4-⑦	0.11		32			
	8	PISTON RING	FIG-4-⑧	—	※	4	6	every 4years or during fan overhaul	
	9	MV PACKING	FIG-4-⑨	—	※	2	6	every 4years or during fan overhaul	
	10	MV PACKING	FIG-4-⑩	—	※	2	6	every 4years or during fan overhaul	
	11	WASHER	FIG-4-⑪	0.11	※	2	4	every 4years or during fan overhaul	
	12	O RING	FIG-4-⑫	0.03	※	2	4	every 4years or during fan overhaul	
	13	RETAINING RING 18	FIG-4-⑬	0.001	※	12	4	every 4years or during fan overhaul	
	14	HEXAGON SOCKET HEAD BOLT M10 × 25	FIG-4-⑭	0.028		24			
	15	WASHER M10	FIG-4-⑮	0.001	※	12	4	every 4years or during fan overhaul	
	16	PISTON SHAFT	FIG-4-⑯	38.7		2			
	17	PARALLEL PIN 8 × 20	FIG-4-⑰	0.008		2			
	18	PARALLEL PIN 10 × 46	FIG-4-⑱	0.029		2			
	HYDRAULIC MECHANISM ASSEMBLY	a1	PILOT VALVE (FOR PILOT VALVE ASS'Y)	FIG-4-a1	3.0	※	2	10	every 6 years
		a2	SLEEVE (FOR PILOT VALVE ASS'Y)	FIG-4-a2	9.0	※	2	10	every 6 years
a3		COVER (FOR PILOT VALVE ASS'Y)	FIG-4-a3	0.92		2			
a4		BOLT M16 × 40 (FOR PILOT VALVE ASS'Y)	FIG-4-a4	0.104		8			
a5		WASHER M16 (FOR PILOT VALVE ASS'Y)	FIG-4-a5	0.003	※	8	4	every 4years or during fan overhaul	
a6		PLUG R3/8 (FOR PILOT VALVE ASS'Y)	FIG-4-a6	0.02	※	8	4	during the pilot sleeve replacement	
a7		PULG M17 × 1.5 (FOR PILOT VALVE ASS'Y)	FIG-4-a7	0.02	※	2	4	during the pilot valve replacement	
a8		PLUG M14 × 1.5 (FOR PILOT VALVE ASS'Y)	FIG-4-a8	0.01	※	2	4	during the pilot valve replacement	
a9		PARALLEL PIN 8 × 10 (FOR PILOT VALVE ASS'Y)	FIG-4-a9	0.004		4			
a10		RETAINING RING 60 (FOR PILOT VALVE ASS'Y)	FIG-4-a10	—	※	2	4	every 4years or during fan overhaul	
a11	RETAINING RING 40 (FOR PILOT VALVE ASS'Y)	FIG-4-a11	0.008	※	2	4	every 4years or during fan overhaul		
a12	OIL SEAL (FOR PILOT VALVE ASS'Y)	FIG-4-a12	—	※	2	4	every 4years or during fan overhaul		
a13	BEARING (FOR PILOT VALVE ASS'Y)	FIG-4-a13	0.13	※	2	4	every 4years or during fan overhaul		
a14	O RING P50A (FOR PILOT VALVE ASS'Y)	FIG-4-a14	0.004	※	2	4	every 4years or during fan overhaul		
a15	O RING G75 (FOR PILOT VALVE ASS'Y)	FIG-4-a15	0.002	※	2	4	every 4years or during fan overhaul		
a16	O RING P18 (FOR PILOT VALVE ASS'Y)	FIG-4-a16	0.001	※	8	4	every 4years or during fan overhaul		
a17	BOLT M8 × 20 (FOR PILOT VALVE ASS'Y)	FIG-4-a17	0.015		8				
a18	WASHER M8 (FOR PILOT VALVE ASS'Y)	FIG-4-a18	0.001	※	8	4	every 4years or during fan overhaul		
a19	SCREW M6 × 12 (FOR PILOT VALVE ASS'Y)	FIG-4-a19	0.005		8				
a20	SPRING WASHER M6 (FOR PILOT VALVE ASS'Y)	FIG-4-a20	0.001	※	8	4	every 4years or during fan overhaul		
aa	DRAIN COVER (FOR PILOT VALVE ASS'Y)	FIG-4-aa	1.1		2				

CONFIDENTIAL

THIS DOCUMENT IS THE PROPERTY OF MITSUBISHI HITACHI POWER SYSTEMS, LTD. (MHPS) AND CONFIDENTIAL. IT MUST NEITHER BE COPIED NOR USED FOR ANY PURPOSE OR MANNER OTHER THAN EXPRESSLY PERMITTED BY MHPS OR WITH A PRIOR WRITTEN CONSENT OF MHPS NEITHER IS IT TO BE HANDED OVER NOR COMMUNICATED TO A THIRD PARTY IN ANY WAY. BREACH OR INFRINGEMENT OF ANY KIND WILL LEAD TO LEGAL ACTION.

Controlled when printed or downloaded. Verify that this is the correct version before use.
 Reproduction of part or all the contents of the document is prohibited without written permission from PT. Bhumi Jepara Service

Table A6-4
Hydraulic Mechanism Assembly Consumables

NOTE
 •Remark ※ : Parts to be replaced at each regular inspection.
 •Not Remark ※ : Replace with a new one depending on the condition.
 •"Order Q'ty" shows parts quantity for two fans.
 •(Quantity required normal maintenance.)

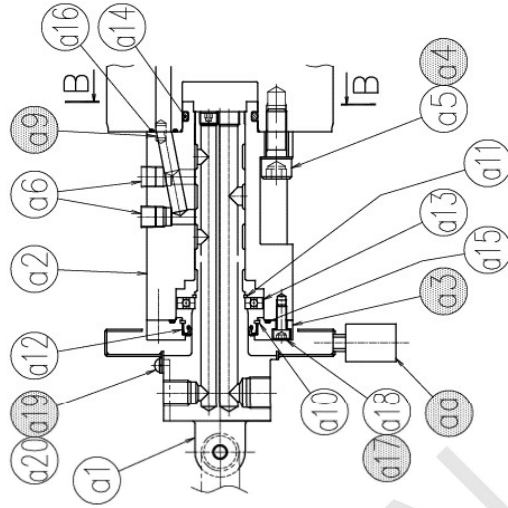
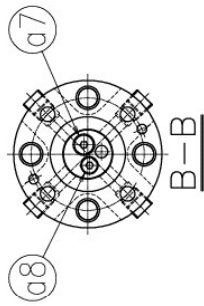
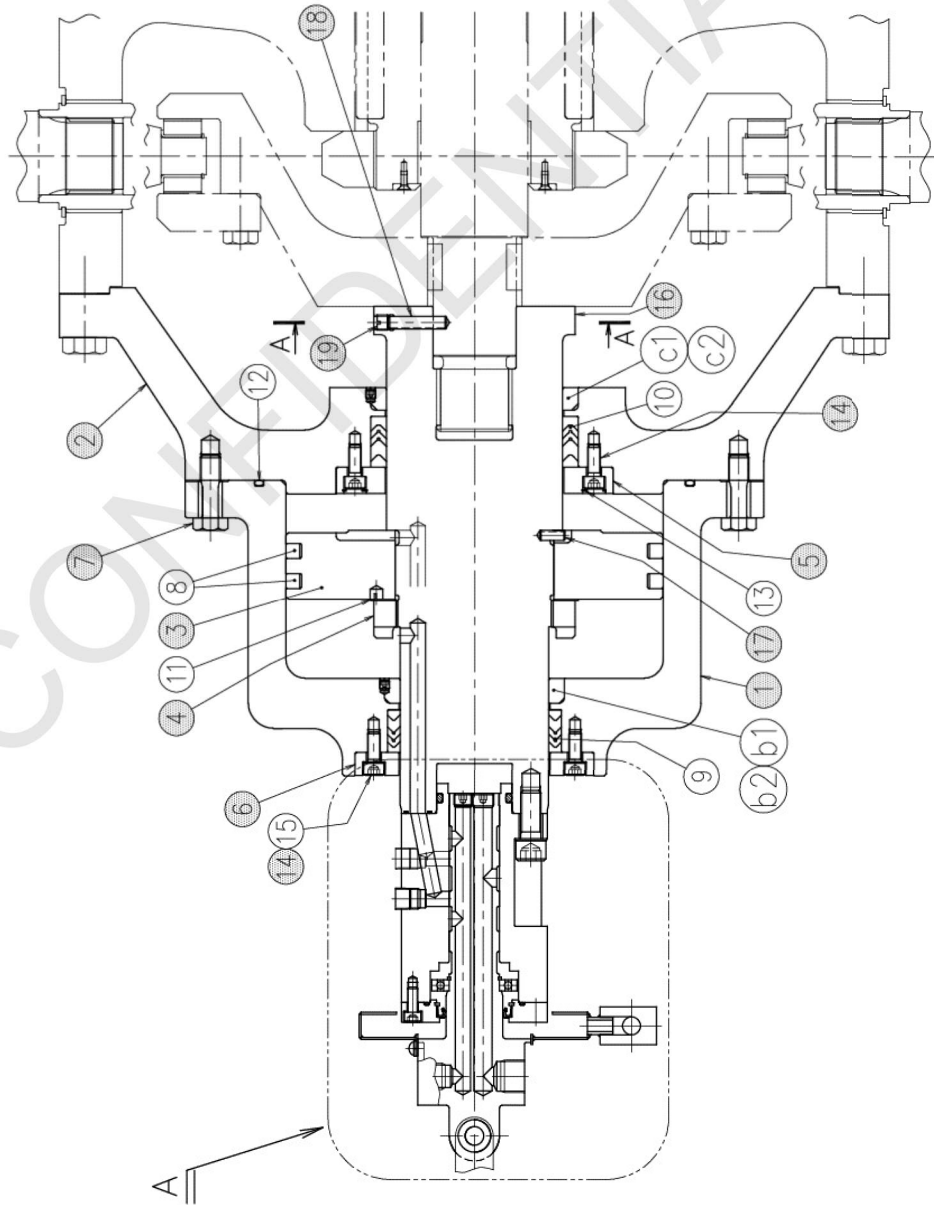
EQUIPMENT No.	MARKS	DESCRIPTION	PART NO	1-PIECE WEIGHT (kg)	REMARK	ORDER Q'TY	DELIVERY TIME (Month)	REPLACEMENT SCHEDULE (Year)	
(D) H Y D R A U L I C M E C H A N I S M A S S E M B L Y	b1	BUSH (CLINDER SIDE)	FIG-4-b1	0.81	※	2	5	4year or abrasion	
	b2	SCREW M8 x 8 (CLINDER SIDE)	FIG-4-b2	0.003	※	4	4	during the bush replacement	
	c1	BUSH (CLINDER COVER SIDE)	FIG-4-c1	0.83	※	2	5	4year or abrasion	
	c2	SCREW M8 x 8 (CLINDER COVER SIDE)	FIG-4-c2	0.003	※	4	4	during the bush replacement	

CONFIDENTIAL
 THIS DOCUMENT IS THE PROPERTY OF MITSUBISHI HITACHI POWER SYSTEMS, LTD.(MHPS) AND CONFIDENTIAL. IT MUST NEITHER BE COPIED NOR USED FOR ANY PURPOSE OR MANNER OTHER THAN EXPRESSLY PERMITTED BY MHPS OR WITH A PRIOR WRITTEN CONSENT OF MHPS NEITHER IS IT TO BE HANDED OVER NOR COMMUNICATED TO A THIRD PARTY IN ANY WAY. BREACH OR IN FRINGEMENT OF ANY KIND WILL LEAD TO LEGAL ACTION.

Uncontrolled when printed or downloaded. Verify that this is the correct version before use.
 Reproduction of part or all the contents of the document is prohibited without written permission from PT. Bhumi Jepara Service

CONFIDENTIAL
 THIS DOCUMENT IS THE PROPERTY OF MITSUBISHI HITACHI POWER SYSTEMS, LTD. (MHPS) AND CONFIDENTIAL. IT MUST NEITHER BE COPIED NOR USED FOR ANY PURPOSE OR MANNER OTHER THAN EXPRESSLY PERMITTED BY MHPS OR WITH A PRIOR WRITTEN CONSENT OF MHPS. NEITHER IS IT TO BE HANDED OVER NOR COMMUNICATED TO A THIRD PARTY IN ANY WAY. BREACH OR INFRINGEMENT OF ANY KIND WILL LEAD TO LEGAL ACTION.

D



DET.A

FIG-4

CONSUMABLE PARTS LIST
(HYDRAULIC MECHANISM ASSEMBLY)