

PRESENTATION

- The top mounting ring and bracket fit the filter/regulator and regulator. These accessories enable bulkhead-mounting of the components.
- The mounting ring can be used separately for panel mounting of a regulator.

CONSTRUCTION

Ring : Glass-fibre reinforced polyamide (Modulair 107 and 112 ranges)
 Light alloy (Modulair 105 range)
 Bracket : Steel with black epoxy paint
 or black-finish zinc-plated steel

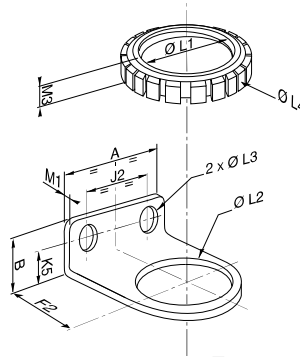
CHOICE OF EQUIPMENT

description	code		
	Modulair 105	Modulair 107	Modulair 112
Top mounting ring	34300011	34300011	34300004
mounting bracket	34300016	34300016	34300017

DIMENSIONS

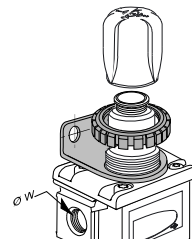
For regulators and filters/regulators with accessories installed: refer to the corresponding pages

type	Modulair	
	105-107	112
Ø W	G1/8 G1/4	G1/4 G3/8 G1/2-G3/4
Bowl (cl)	7	12
A	42	45
B	20	20
F2	42	42
J2	29	29
K5	12,5	12
Ø L1	M30 x 2 (2)	M 37 X 2
Ø L2	31	37,5
Ø L3	7	7
Ø L4	40	45
M1	2	2
M2	3	2
M3	6	6

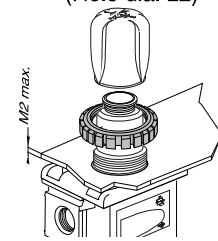


MONTAGE

INSTALLATION WITH BRACKET AND RING



PANEL MOUNTING (Hole dia. L2)



Adaptation for Modulair 107 and 112 ranges

To mount the bracket and ring, remove the pressure control knob from the regulator or filter/regulator. The knob is a snap-on type and can be removed by pulling sharply upward. To remount, push it back on.

(2) Modulair 105: M 30 x 1,5

PRESSURE GAUGES

PRESENTATION

- R1/8 rear centre connection
- Fits all versions of regulators and filters/regulators

SPECIFICATIONS

FLUID : filtered air or neutral gas, lubricated or NOT
 PORT : R 1/8 tapered
 DIAMETER : 40 or 50 mm
 SCALE RANGE : see table below
 GRADUATIONS : bar and psi

CHOICE OF EQUIPMENT

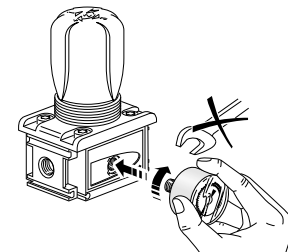
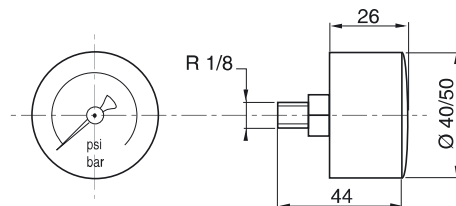
description	code	adaptable sur Modulair		
		105	107	112
40 mm dia. press. gauge only	0 - 4 bar	34300015	⊛	⊛
	0 - 10 bar	34300014	●	
	0 - 12 bar	34300041		●
50 mm dia. press. gauge only	0 - 4 bar	34200061		⊛
	0 - 12 bar	34200062		●
	0 - 16 bar	34200997		⊛ ●

(●): Product for standard applications - (⊛): Pressure gauge for optional versions

Separate products and systems are also available in stock packages including pressure gauges

DIMENSIONS

Weight
 Ø 40 : 0,065 kg
 Ø 50 : 0,070 kg



Manual installation recommended.
 Make sure other unused ports are sealed off on installation