



Wire Rope Clip

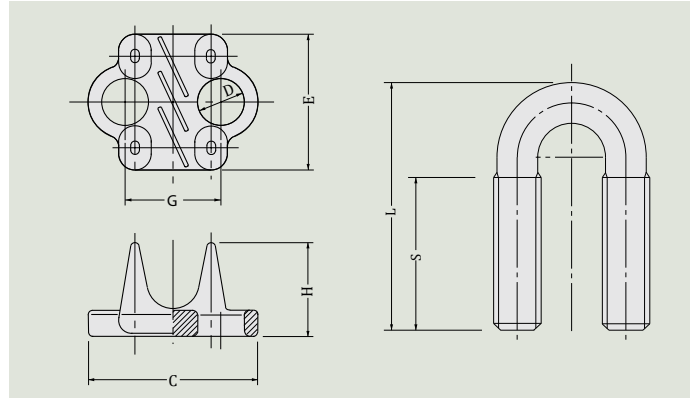
Drop Forged Steel Wire Rope Clip (JIS/US)



Self Color



HOT DIPPED GALV.

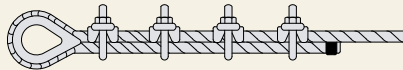


JIS B2809-1996 (JIS Standard F Type)

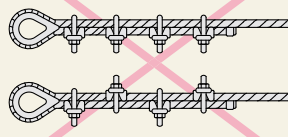
Size	BODY				U-BOLT/NUT			Weight (N)
	C	E	G	H	Thread	L	S	
6	30	24.5	14	16	M6	35	20	47
8	36	31	18	19	8	40	20	80
9	41	29	22	19	10	46	24	112
10	45	35	22	23	10	50	28	150
12	51	39	26	27	12	60	35	220
14	53	45	28	31	12	65	40	260
16	60	48	32	35	14	75	45	380
18	62	53	34	37	14	80	50	450
20-22	78	62	44	43	18	100	60	800
24-25	86	68	48	47	20	110	65	1100
26-28	94	75	54	53	22	120	70	1500
30-32	98	79	58	58	22	130	75	1600
33-38	120	93	70	65	27	150	85	2800
40-45	136	100	80	72	30	175	95	4400
47-50	150	115	89	81	33	195	100	6100
53-60	170	128	101	96	36	240	125	8900
63-70	191	142	116	105	39	270	130	10900
73-80	212	156	128	114	42	300	150	14600

Method of installing wire rope clip

- Please install the wire rope clip correctly.
- It was tightened by correct torque then the retention efficiency is 80%.



Correct



Wrong

The slipping is caused in the tightening parts if the wrong instruction or tightening torque is not proper and it causes an accident due to the decrease in retentivity.

⚠ Notes

- 1: Please use what suitable for JIS rope diameter (please do not use the rope of different kinds & diameter with the same wire rope clips)
- 2: Please remove if the sand on the clips and please do not use the rusted.
- 3: Please bring a wire rope clip that is the nearest the eye of the thimble close the thimble as much as possible.
- 4: Moreover, please give the length of the wire rope of the part of the terminal end of the wire rope clip as 6 times the diameter.
Please tighten with the torque wrench by correct torque. Moreover, please tighten one by one dividing from the wire rope clip of the terminal into 3 times or more in the same order.
- 5: Please fasten in the diameter's become thin and slipperiness
- 6: Please mark with the paint or others, and sometimes confirm the presence of slipping after installation ends.
- 7: Please do not use the wire rope clip for the Vinyl core wire rope when the load.

Fitting Standard (FOR 6X24 / 6X37)

Rope Dia (A)	Fitting Q'ty	Space (A)	Torque (O f-B)
6	4	40	100
8	4	50	120
10	4	70	160
12	4	80	240
14	4	90	380
16	4	100	530
18	5	120	680
20	5	130	840
24	5	160	1210
26	5	170	1400
30	6	200	1900
36	7	230	2660
40	7	260	3050
48	8	310	4050

Malleable Iron Cast Wire Rope Clip

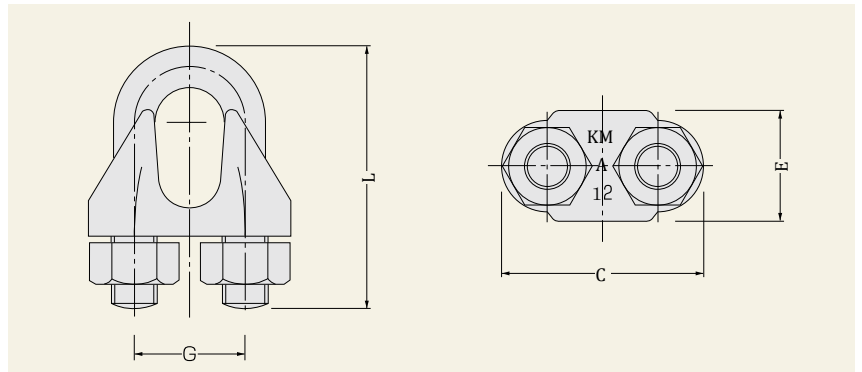


Self Color



Galvanized

Please use the drop forged wire rope clip (JIS type) when the heavy loading



Size (A)	U-BOLT/NUT (W)	Weight (N)
3	3/16	15
4.5	1/4	27
6	5/16	55
8	5/16	62
9	3/8	105
12	3/8	130
16	1/2	254
19	1/2	295
19KL	1/2	272
22	5/8	545
25	5/8	650

The KL clip is the small size and light for the lashing wire

	C	E	G	L
KM19	61	32	33	74
KL19	56	28	32	73