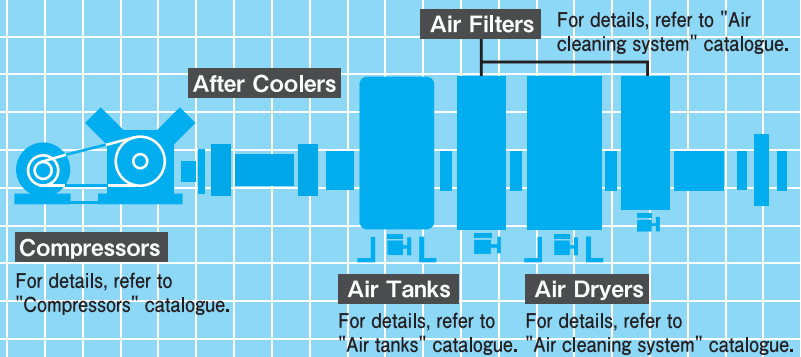


URL=<https://www.konan-em.com/>

LINE COMPONENTS



KONAN LINE COMPONENTS



“For both safety and savings...”

“The rising needs for automation and labor saving are satisfied by each member of the lineup, from general purpose types, where importance is given to basic performance, to specialized types designed for individual industries and applications”



AIR FILTERS

Specifications

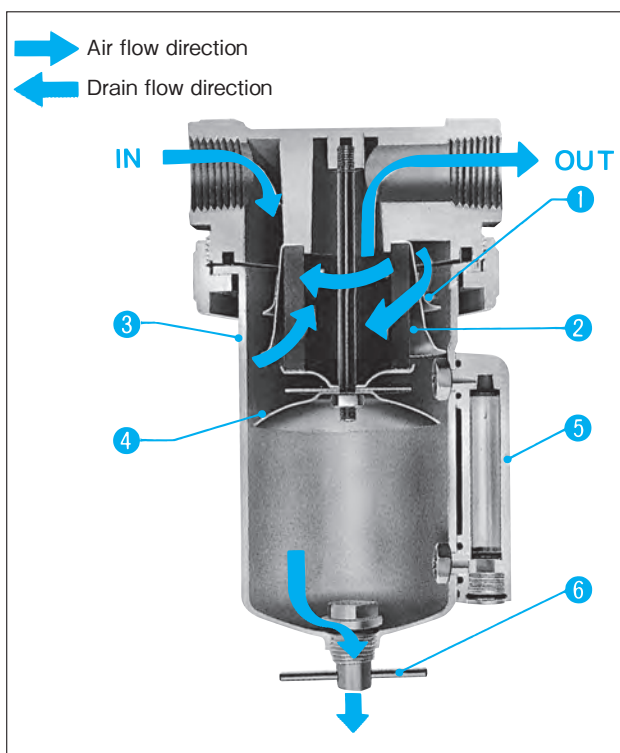
Model code	Standard type	AF2-02	
Port size		6A	8A
		Rc1/8	Rc1/4
※1 Effective sectional area		7mm ² Filter rating=5μm	
Operating pressure		0 ~ 1MPa	
Proof pressure		1.5MPa	
Operating temperature		- 20 ~ 60°C	
Mass		0.19kg	

Model code	Standard type	AF21-04			AF2-08		AF2											
	In the control box	AF21P-04			AF2P-08													
Port size		8A	10A	15A	20A	25A	32A	40A	50A	65A	80A	100A						
		Rc1/4	Rc3/8	Rc1/2	Rc3/4	Rc1	Rc1 1/4	Rc1 1/2	Rc2	Rc2 1/2	Flange	Flange						
※1 Effective sectional area	General purpose	40mm ²	68mm ²	90mm ²	171mm ²	190mm ²	480mm ²	655mm ²	1060mm ²	1450mm ²	1800mm ²	2500mm ²						
	Instrumentation	28mm ²	30mm ²	40mm ²	76mm ²	77mm ²	190mm ²	190mm ²	300mm ²	—	—	—						
Operating pressure		0 ~ 1.0MPa																
Proof pressure		1.5MPa																
Operating temperature		<table border="1"> <tr> <td>General purpose</td> <td>- 20 ~ 60°C</td> </tr> <tr> <td>Heat-resistant</td> <td>5 ~ 100°C</td> </tr> <tr> <td>Freeze-resistant</td> <td>- 40 ~ 45°C</td> </tr> </table>					General purpose	- 20 ~ 60°C	Heat-resistant	5 ~ 100°C	Freeze-resistant	- 40 ~ 45°C	- 20 ~ 60°C					
	General purpose	- 20 ~ 60°C																
	Heat-resistant	5 ~ 100°C																
Freeze-resistant	- 40 ~ 45°C																	
Mass		0.58kg	0.62kg	0.6kg	12.0kg	22.0kg	28.0kg	39.0kg	50.0kg									

- Above values of mass exclude weight of mounting bracket.
- For specifications other than those listed above, please contact us.
- ※ 1. Effective area shown when : inlet pressure 0.5MPa pressure drop (ΔP) 0.05MPa

Operation

Standard type

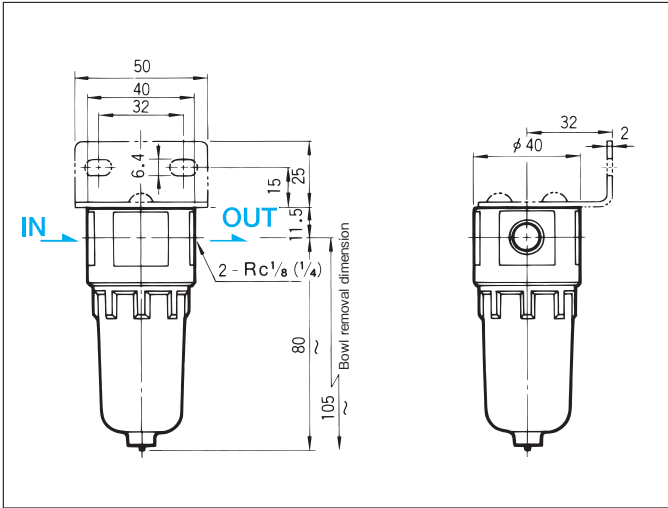


- Deflector** — Changes air under pressure from IN port into a rotating flow and separates moisture from the air centrifugally.
- Filter element** — Filters out lightweight dirt, foreign matter, etc. that cannot be separated from the air centrifugally.
- Bowl** — Drain separated centrifugally runs down the inner wall of the bowl and collects at the bottom.
- Baffle plate** — Prevents drain at the bottom of the bowl's from mixing with the air again.
- Side glass** — Used to see how much drain has collected.
- Drain cock** — Turning the handle counterclockwise allows drain to be discharged.

Outside Dimensions

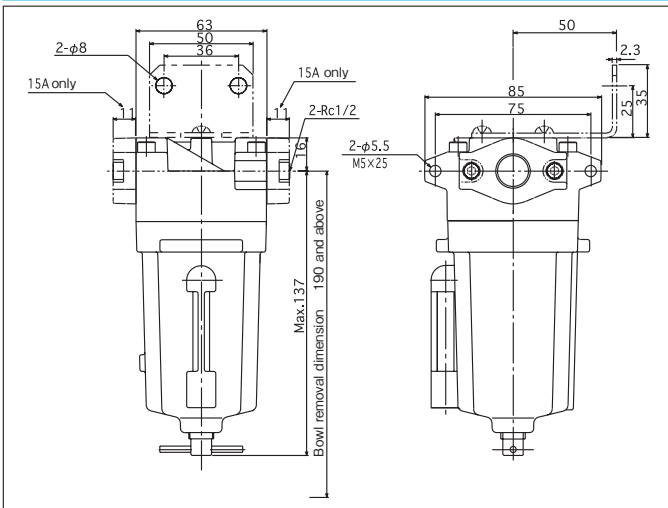
Standard type

AF2-02-6A · 8A

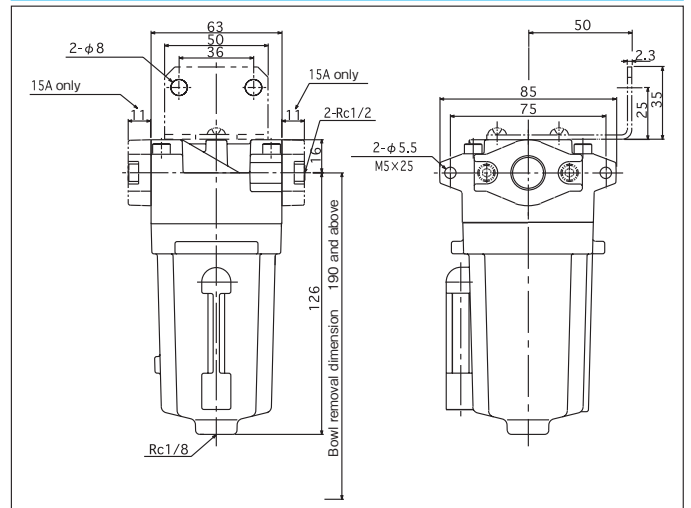


Type mounted in the control box

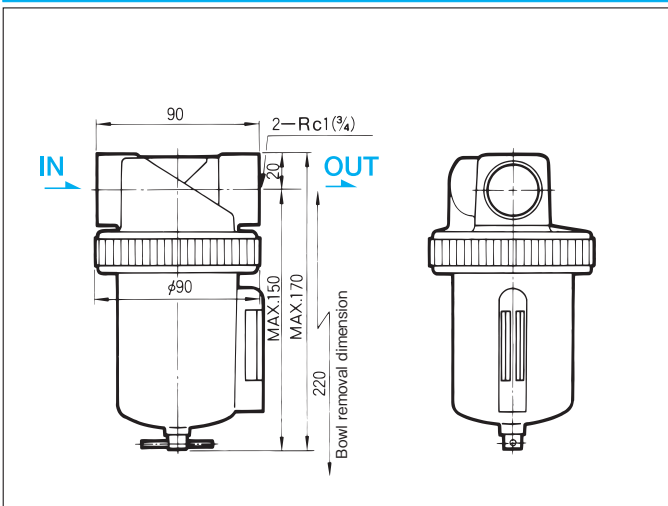
AF21-04-8A · 10A · 15A



AF21P-04-8A · 10A · 15A



AF2-08-20A · 25A



AF2P-08-20A · 25A

