

Optional Extras	Code	For Switch Sizes				
		S00	S0	S1	S2	S3

Padlock Device



Dimensions p. 39

For 1 padlock
with lock bow diameter for 4-5,5 mm.
The handle may be supplied in black and red.

V840K

3,5-5



Dimensions p. 39

The padlock is an integral part of the switch handle itself and can hold 2 padlocks
The lock bar is accessible from the bottom. Handle can be sealed in the locked and unlocked positions. The handle may be supplied in black, red and electro-gray.

V840A/A

3,5-4,5

4-6

V840A/C

3-4



Dimensions p. 39

For 1 padlock
For mounting VE2 and VE21 with lock bar accessible from the front. Available in red and electro-gray.

V840B

4,5-6



Dimensions p. 39

Up to 4 padlocks
The lock bar is accessible from the front and may be supplied in black, red and electro-gray.

V845

3-7

4-7,5

4-8

4-8,5

Spring loaded push rod
Up to 4 padlocks

V846

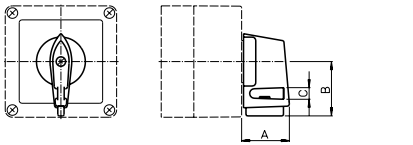
4-7,5

Ordering data:

Color variation.

< back to table of contents >

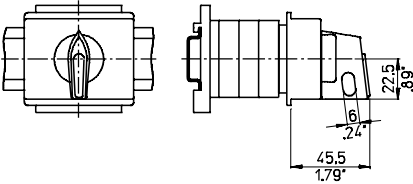
Padlock Device



V840A

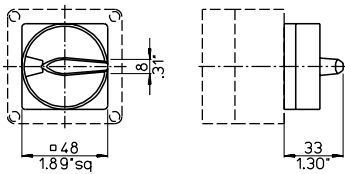
For 2 padlocks

Size	A	B	C
S0	27,7 1.07	31,5 1.24	5 .20
S1	35 1.38	40 1.57	7 .28



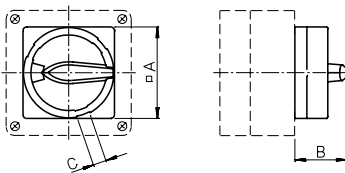
V840B

For 2 padlocks



V840D

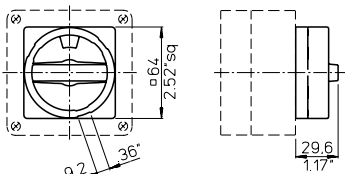
For 2 padlocks



V840G, V840D

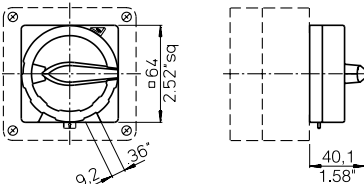
For 3 padlocks

	A	B	C
V840G	64 2.52	40,1 1.58	9,2 .36
V840D	88 3.46	49,3 1.94	10 .39



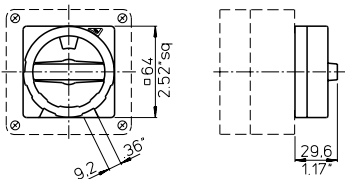
V840G/B

For 3 padlocks



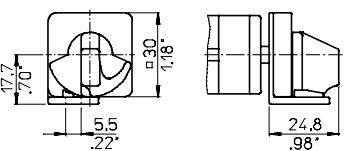
V840F/F

For 4 padlocks



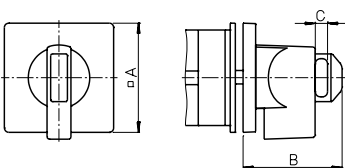
V840F/B

For 4 padlocks



V840K

For 1 padlock



V845, V846 (S1 only)

Size	A	B	C
S0	48 1.89	51 2.01	7,2 .28
S1	64 2.52	58 2.28	8,1 .32
S2	88 3.46	73 2.87	9 .35
S3	130 5.12	86,5 3.41	9,2 .36