

Construction and Materials

No.	Parts	Standard		Super-firesafe
		150UTB 300UTB	150UTBM 300UTBM	150UTB-FS/UTBM-FS 300UTB-FS/UTBM-FS
1	Body	A351 Gr. CF8*1	A351 Gr. CF8M*1	A351 Gr. CF8/CF8M*1
2	Body cap	A351 Gr. CF8*1	A351 Gr. CF8M*1	A351 Gr. CF8/CF8M*1
3	Stem	A276 Type 304*1	A276 Type 316*1	A276 Type 304/316*1
4	Ball	A276 Type 304 or A351 Gr. CF8*1	A276 Type 316 or A351 Gr. CF8M*1	A276 Type 304/316 or A351 Gr. CF8/CF8M*1
7	Gland	A351 Gr. CF8		
8	Gland packing	PTFE		Flexible graphite
9	Handle*4	Ductile iron		
16A	Nameplate	Aluminum		
16B	Washer	Carbon steel		
19	Gasket	PTFE		Flexible graphite
20	Packing washer*2	A276 Type 316		
30	Ball seat	HYPATITE® PTFE*3		
33	Cap nut	A194 Gr. 8		
35	Cap bolt	A193 Gr. B8		
36	Gland bolt	A193 Gr. B8		
47	Thrust washer 4"~10"	Reinforced PTFE		
48	Snap ring	A276 Type 304		
49	Stopper	A276 Type 304		
67	Stem bearing	Reinforced PTFE		
123	Handle bolt 6"~10"	Carbon steel		
124A	Spring & pin 2 1/2"~10"	A313 & A276 Type 316		
124B	Spring 1/2"~2"	A313 Type 316		

■ Standard material configuration can be applied to sour service.

*1 Other stainless steels are available as options.

*2 Packing washers are used only for 1" and smaller.

*3 Virgin PTFE for 10" Class 150.

*4 Bar type handles are used for 6" and 8". Worm gear operations are used for 10".

All part numbers are corresponding with those shown in valve assembly drawings.

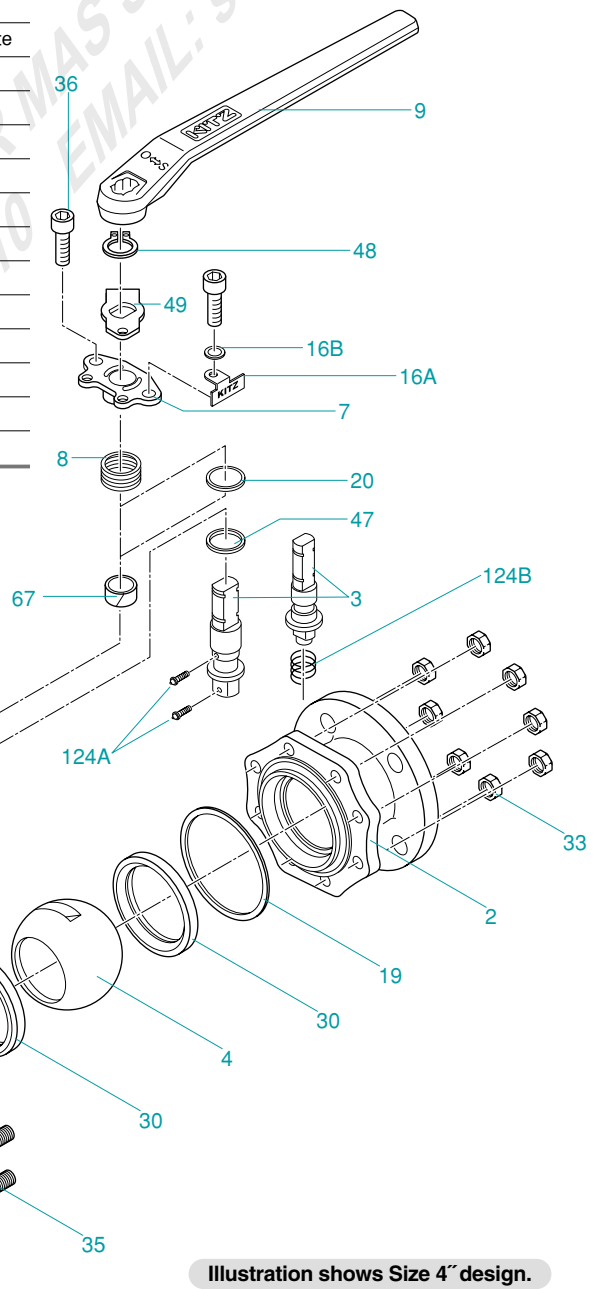
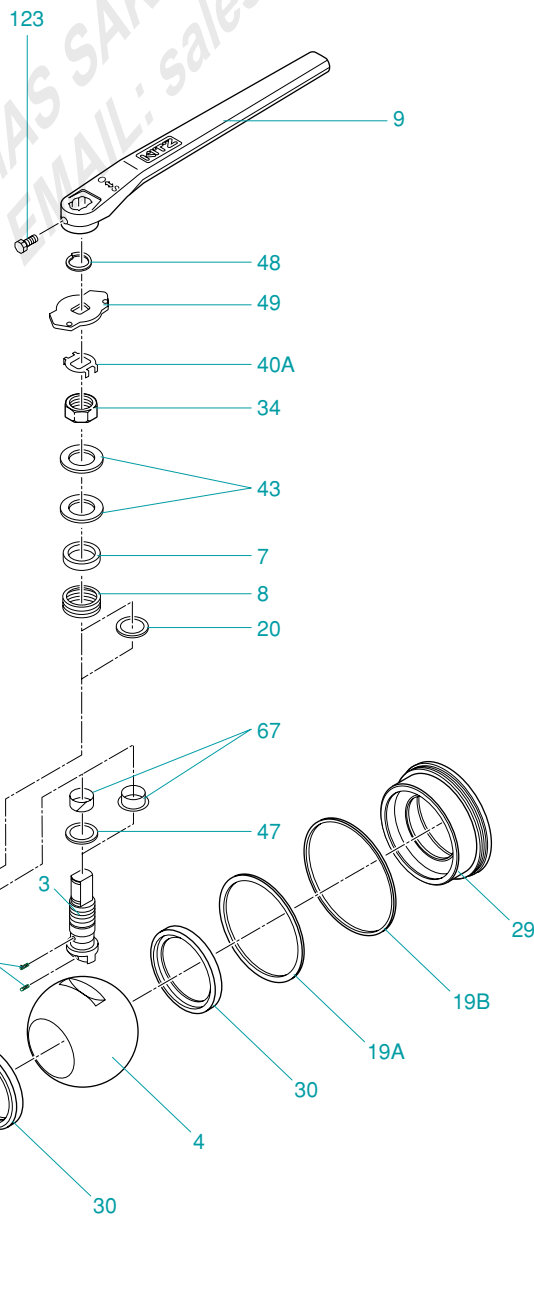


Illustration shows Size 4" design.

Construction and Materials

No.	Parts	Standard		Super-firesafe	
		150UTA 300UTA	150UTAM 300UTAM	150UTA-FS/UTAM-FS 300UTA-FS/UTAM-FS	
1	Body	A351 Gr. CF8	A351 Gr. CF8M	A351 Gr. CF8/CF8M	
3	Stem	A276 Type 304*1	A276 Type 316*2	A276 Type 304/316*1,2	
4	Ball	A276 Type 304	A276 Type 316	A276 Type 304/316	
		A351 Gr. CF8	A351 Gr. CF8M	A351 Gr. CF8/CF8M	
7	Gland	1/2" ~ 1"	A276 Type 316		
		1 1/2" ~ 4"	A276 Type 304*3		
		6" ~ 10"	A351 Gr. CF8		
8	Gland packing	PTFE		Flexible graphite	
9	Handle*4	1/2" ~ 1"	Stainless steel		
		1 1/2" ~ 4"	Ductile iron		
10	Handle nut	1/2" ~ 1"	Stainless steel		
16	Nameplate	Stainless steel			
19A	Gasket	PTFE			
19B	Secondary gasket	-		Flexible graphite	
20	Packing washer	1 1/2" only	A276 Type 316		
29	Insert	1/2" ~ 2" 8" 10"	A351 Gr. CF8	A351 Gr. CF8M	A351 Gr. CF8/CF8M
		3" ~ 6"	A182 Gr. F304	A182 Gr. F316	A182 Gr. F304/F316
30	Ball seat	HYPATITE® PTFE			
34	Gland nut	1/2" ~ 4"	Stainless steel		
36	Gland bolt	6" ~ 10"	A193 Gr. B8M		
40A	Lock plate	1/2" ~ 4"	Stainless steel		
40B	Key lock plate	1/2" ~ 4"	Stainless steel		
43	Coned disc spring	1/2" ~ 4"	Stainless steel		
47	Thrust washer	Reinforced PTFE			
48	Snap ring	1 1/2" ~ 10"	Stainless steel		
49	Stopper	1 1/2" ~ 10"	Stainless steel		
67	Stem bearing	1 1/2" ~ 10"	Reinforced PTFE		
123	Handle bolt	Carbon steel			
124	Spring & pin	Stainless steel			
126	Stopper pin	Stainless steel			
145	Spring washer	1 1/2" ~ 10"	Stainless steel		

Standard material configuration can be applied to sour service.



*1 A479 / A479M Type 304 for 3" and larger.
 *2 A479 / A479M Type 316 for 3" and larger.
 *3 A479 / A479M Type 304 for 3" and 4".
 *4 Bar type handles are used for 6" and larger.

All part numbers are corresponding with those shown in valve assembly drawings.

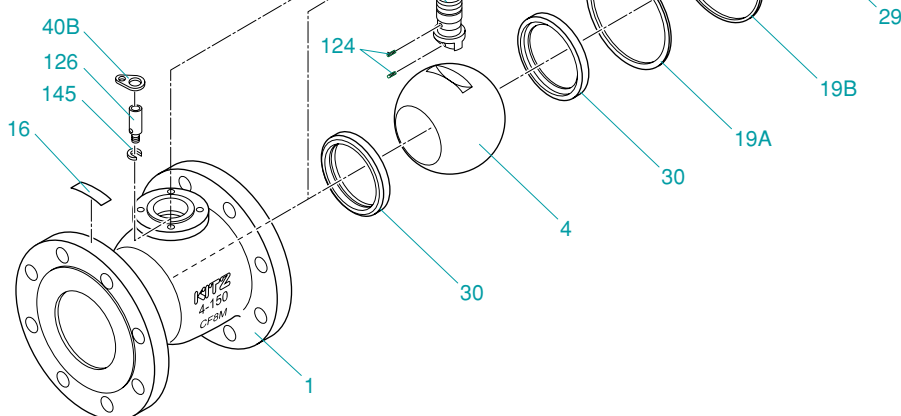
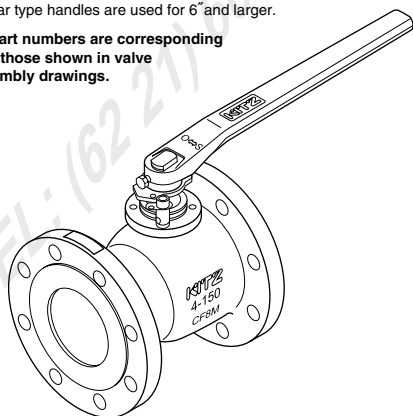


Illustration shows Size 4" design.