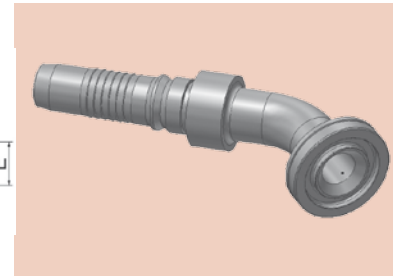
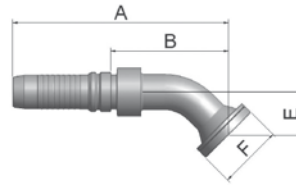



6F SAE Code 62 Flange 45° Elbow – Heavy Series

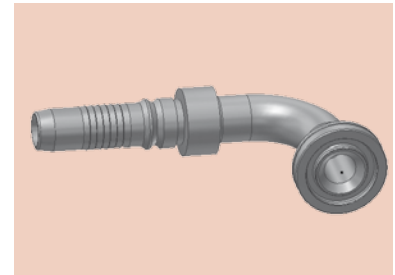
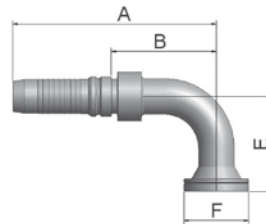
ISO 12151-3 – E45-S – SFS 45°
6000 psi




XXXXX-XX-XX Part Number 	Hose I.D.				Flange Inch	A mm	B mm	E mm	F mm
	DN	Inch	Size	mm					
K6FV6-20-20C	31	1 1/4	-20	31.8	1 1/4	189	97.3	38	54
K6FV6-24-20C	31	1 1/4	-20	31.8	1 1/2	189	97.3	38	64
K6FV6-24-24C	38	1 1/2	-24	38.1	1 1/2	221	125.3	44	64
K6FV6-32-24C	38	1 1/2	-24	38.1	2	221	125.3	44	79
K6FV6-32-32C	51	2	-32	50.8	2	274	163.3	56	79

6N SAE Code 62 Flange 90° Elbow

ISO 12151-3 – E-S – SFS 90°
6000 psi



XXXXX-XX-XX Part Number 	Hose I.D.				Flange Inch	A mm	B mm	E mm	F mm
	DN	Inch	Size	mm					
K6NV6-20-20C	31	1 1/4	-20	31.8	1 1/4	177	86.3	90	54
K6NV6-24-20C	31	1 1/4	-20	31.8	1 1/2	177	86.3	90	64
K6NV6-24-24C	38	1 1/2	-24	38.1	1 1/2	210	113.3	104	64
K6NV6-32-24C	38	1 1/2	-24	38.1	2	209	113.3	104	79
K6NV6-32-32C	51	2	-32	50.8	2	268	157.3	138	79

Approved **fitting series** for hose types:

Also available in steel. Details can be found in CAT 4400/UK

 R42 R42ST R42TC