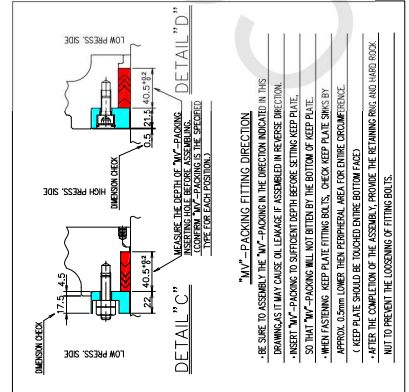
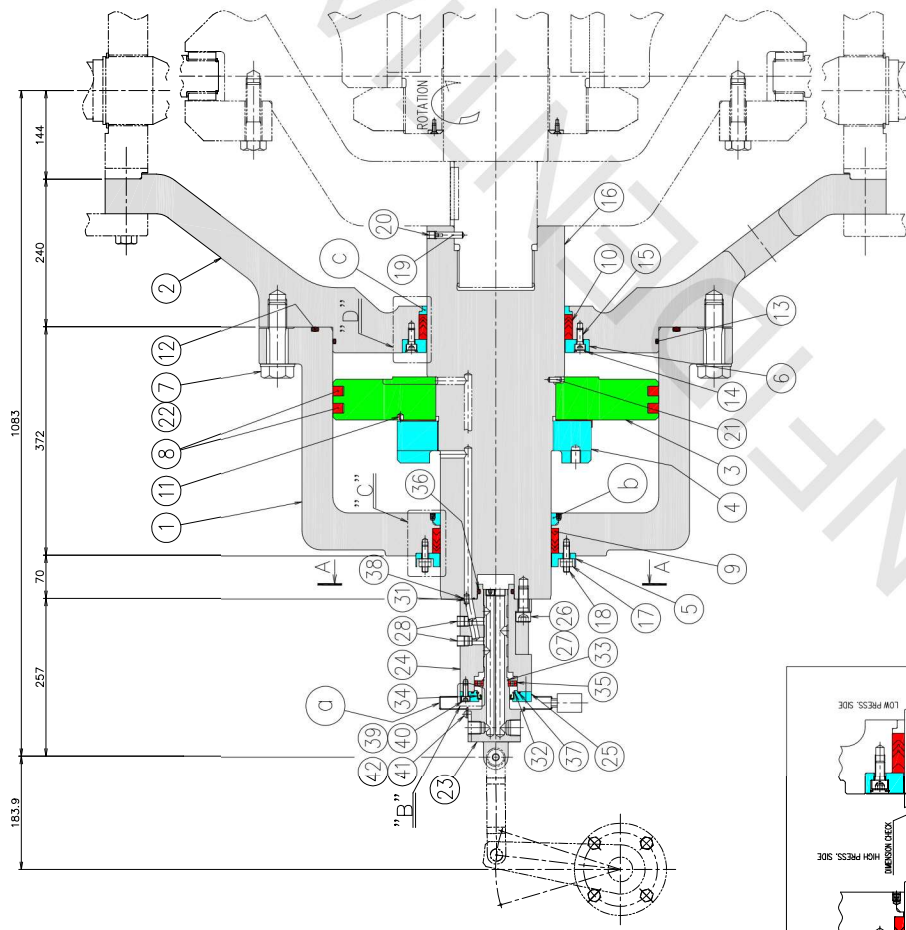
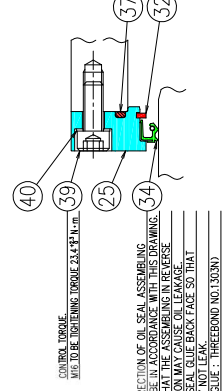


MARKS	DESCRIPTION	MATERIALS (ASTM/JIS)	1-PC WEIGHT (kg)
1	CYLINDER	A27 G-70-36/S2480	413
2	CYLINDER COVER	A576 G10250-N/S25C-N	702
3	PISTON	A576 G10250-N/S25C-N	93.1
4	PISTON PIN	A576 G10250-N/S25C-N	4.6
5	PLATE FOR MV PACKING	A576 G10250-N/S25C-N	4.76
6	PLATE FOR MV PACKING	A576 G10250-N/S25C-N	5.47
7	BOLT M30X104	A193 G8-B7/S0M435-QT	0.72
8	PISTON RING	RFLON	-
9	MV PACKING	RUBBER	-
10	MV PACKING	RUBBER	-
11	MV PACKING	RUBBER	-
12	MV PACKING	RUBBER	-
13	O RING	RUBBER	0.134
14	RETAINING RING	A866 TYPE W-GC/S0SM	0.001
15	BOLT M10X25	A193 G8-B7/S0M435	0.028
16	PISTON SHIRT	A193 G8-B7/S0M435-QT	140
17	HARD ROCK NUT M10	A193 G8-B7/S0M435	0.018
18	SLOTTED SCREW BOLT M10	A193 G8-B7/S0M435	0.02
19	PARALLEL PIN 10X42	A576 G10250-N/S25C-N	0.026
20	PARALLEL PIN 12X1.25	A576 G10250-N/S25C-N	0.008
21	PARALLEL PIN 8X20	A295 S2100/SU2	0.012
22	WASHER M20	A576 G10250-N/S25C-N	0.054
23	PISTON PIN	A29 G4118/S0M420	3.0
24	PISTON PIN	A29 G4118/S0M420	3.0
25	PISTON PIN	A29 G4118/S0M420	3.0
26	PISTON PIN	A29 G4118/S0M420	3.0
27	WASHER M16	W1-7/S0SM	0.02
28	WASHER M16	W1-7/S0SM	0.02
29	PLUG M12X1.5	A576 G10250-N/S25C-N	0.02
30	PLUG M12X1.5	A576 G10250-N/S25C-N	0.02
31	PLUG M12X1.5	A576 G10250-N/S25C-N	0.02
32	RETAINING RING	A866 TYPE W-GC/S0SM	0.004
33	RETAINING RING	A866 TYPE W-GC/S0SM	0.008
34	OIL SEAL	NBR	-
35	BEARING	A295 S2100/SU	0.13
36	O RING F50A	RUBBER	0.004
37	O RING F75	RUBBER	0.002
38	O RING F75	RUBBER	0.001
39	O RING F75	RUBBER	0.001
40	WASHER M8	W1-7/S0SM	0.001
41	SCREW M8X12	A248 G10150/SWRM12	0.005
42	SPRING WASHER M6	A713 G10640/SWRM62	0.001
a	DRAIN COVER	-	1.1
b	MACHINING OF BUSH	-	1.38
c	MACHINING OF BSPT	-	0.88

- NOTES:
- CHECK PISTON STROKE (OPEN 18.8mm, CLOSE 81.1mm).
 - CHECK STROKE OF PILOT VALVE (14.4mm).
 - ON ASSY, USE CARE NOT TO DAMAGE MV PACKINGS @A AND OIL SEAL @B.
 - MOUNTING POINT AND ORIENTATION OF THE MV-PACKING IS INSERTED AND AS SHOWN ABOVE.
 - STAMP AT THE MOUNTING SCREWS OF THE PILOT VALVE, FLEXIBLE HOSE CONNECTION AS SHOWN IN THE DRAWING.
 - OIL RETURN : NO STAMP (NO PAINT)
 - PILOT LEAK : STAMP "C" (GREEN PAINT)
 - OIL SEAL LEAK : STAMP "W" (WHITE PAINT)

WHEN ASSY, CONFIRM PLUG IS NOT STICKING OUT FROM SURFACE OF PILOT VALVE. APPLY SEAL GLUE ALL AROUND SO THAT OIL MAY NOT LEAK. PUNCHING AT 2 PLACES ON CIRCUMFERENCE AFTER TIGHTING.
(SEAL GLUE : THREEBOND NOT1303N)



CONFIDENTIAL
THIS IS THE PROPERTY OF MITSUBISHI POWER LTD. AND CONFIDENTIAL. IT MUST NOT BE REPRODUCED OR USED FOR ANY PURPOSE OR MANAGER OTHER THAN EXPRESSLY PERMITTED BY MITSUBISHI POWER LTD. OR WITH A PROPER WRITTEN CONSENT OF MITSUBISHI POWER LTD. NEITHER IS IT TO BE HANDED OVER NOR COMMUNICATED TO A THIRD PARTY IN ANY WAY. BREACH OR INFRINGEMENT OF ANY KIND WILL LEAD TO LEGAL ACTION.

FIGURE 4-3.1.6 HYDRAULIC MECHANISM ASSEMBLY

Uncontrolled when printed or downloaded. Verify that this is the correct version before use.
Reproduction of part or all the contents of the document is prohibited without written permission from PT. Bhumijepara Service

Table A6-4
Hydraulic Mechanism Assembly Consumables

NOTE
 •Remark ※ : Parts to be replaced at each regular inspection.
 •Not Remark ※ : Replace with a new one depending on the condition.
 •"Order Q'ty" shows parts quantity for two fans.
 •(Quantity required normal maintenance.)

EQUIPMENT No.	MARKS	DESCRIPTION	PART NO	1-PIECE WEIGHT (kg)	REMARK	ORDER Q'TY	DELIVERY TIME (Month)	REPLACEMENT SCHEDULE (Year)
	1	HYDRAULIC CYLINDER	FIG-4-①	413		2		
	2	HYDRAULIC CYLINDER COVER	FIG-4-②	702		2		
	3	PISTON	FIG-4-③	93.1		2		
	4	NUT	FIG-4-④	22.4		2		
	5	TIGHTENING PLATE FOR MV-PACKING	FIG-4-⑤	1.90		2		
	6	TIGHTENING PLATE FOR MV-PACKING	FIG-4-⑥	5.47		2		
	7	BOLT M30 × 104	FIG-4-⑦	0.72		52		
	8	PISTON RING	FIG-4-⑧	—	※	4	6	every 4years or during fan overhaul
	9	MV-PACKING	FIG-4-⑨	—	※	2	6	every 4years or during fan overhaul
	10	MV-PACKING	FIG-4-⑩	—	※	2	6	every 4years or during fan overhaul
	11	WASHER	FIG-4-⑪	0.87	※	2	4	every 4years or during fan overhaul
	12	O RING	FIG-4-⑫	0.134	※	2	4	every 4years or during fan overhaul
	13	O RING	FIG-4-⑬	0.034	※	2	4	every 4years or during fan overhaul
	14	RETAINING RING 18	FIG-4-⑭	0.001	※	6	4	every 4years or during fan overhaul
	15	HEXAGON SOCKET HEAD BOLT M10 × 25	FIG-4-⑮	0.028		6		
	16	PISTON SHAFT	FIG-4-⑯	140		2		
	17	HARD ROCK NUT M10	FIG-4-⑰	0.018		12		
	18	SLOTTED SET BOLT M10 × 45	FIG-4-⑱	0.02		12		
	19	PARALLEL PIN 10 × 42	FIG-4-⑲	0.026		2		
	20	PLUG M12X1.25	FIG-4-⑳	0.008		2		
	21	PARALLEL PIN 8 × 20	FIG-4-㉑	0.012		2		
	22	WASHER M30	FIG-4-㉒	0.054	※	52	4	every 4years or during fan overhaul
	a1	PILOT VALVE (FOR PILOT VALVE ASS'Y)	FIG-4-a1	3.0	※	2	10	every 6 years
	a2	SLEEVE (FOR PILOT VALVE ASS'Y)	FIG-4-a2	9.0	※	2	10	every 6 years
	a3	COVER (FOR PILOT VALVE ASS'Y)	FIG-4-a3	0.92		2		
	a4	BOLT M16 × 40 (FOR PILOT VALVE ASS'Y)	FIG-4-a4	0.104		8		
	a5	WASHER M16 (FOR PILOT VALVE ASS'Y)	FIG-4-a5	0.003	※	8	4	every 4years or during fan overhaul
	a6	PLUG R3/8 (FOR PILOT VALVE ASS'Y)	FIG-4-a6	0.02	※	8	4	during the pilot sleeve replacement
	a7	PULG M17 × 1.5 (FOR PILOT VALVE ASS'Y)	FIG-4-a7	0.02	※	2	4	during the pilot valve replacement
	a8	PLUG M14 × 1.5 (FOR PILOT VALVE ASS'Y)	FIG-4-a8	0.01	※	2	4	during the pilot valve replacement
	a9	PARALLEL PIN 8 × 10 (FOR PILOT VALVE ASS'Y)	FIG-4-a9	0.004		4		
	a10	RETAINING RING 60 (FOR PILOT VALVE ASS'Y)	FIG-4-a10	—	※	2	4	every 4years or during fan overhaul
	a11	RETAINING RING 40 (FOR PILOT VALVE ASS'Y)	FIG-4-a11	0.008	※	2	4	every 4years or during fan overhaul
	a12	OIL SEAL (FOR PILOT VALVE ASS'Y)	FIG-4-a12	—	※	2	4	every 4years or during fan overhaul
	a13	BEARING (FOR PILOT VALVE ASS'Y)	FIG-4-a13	0.13	※	2	4	every 4years or during fan overhaul
	a14	O RING P50A (FOR PILOT VALVE ASS'Y)	FIG-4-a14	0.004	※	2	4	every 4years or during fan overhaul
	a15	O RING G75 (FOR PILOT VALVE ASS'Y)	FIG-4-a15	0.002	※	2	4	every 4years or during fan overhaul
	a16	O RING P18 (FOR PILOT VALVE ASS'Y)	FIG-4-a16	0.001	※	8	4	every 4years or during fan overhaul
	a17	BOLT M8 × 20 (FOR PILOT VALVE ASS'Y)	FIG-4-a17	0.015		8		
	a18	WASHER M8 (FOR PILOT VALVE ASS'Y)	FIG-4-a18	0.001	※	8	4	every 4years or during fan overhaul

CONFIDENTIAL

THIS DOCUMENT IS THE PROPERTY OF MITSUBISHI HITACHI POWER SYSTEMS, LTD. (MHPS) AND CONFIDENTIAL. IT MUST NEITHER BE COPIED NOR USED FOR ANY PURPOSE OR MANNER OTHER THAN EXPRESSLY PERMITTED BY MHPS OR WITH A PRIOR WRITTEN CONSENT OF MHPS NEITHER IS IT TO BE HANDED OVER NOR COMMUNICATED TO A THIRD PARTY IN ANY WAY. BREACH OR INFRINGEMENT OF ANY KIND WILL LEAD TO LEGAL ACTION.

Controlled when printed or downloaded. Verify that this is the correct version before use.
 Reproduction of part or all the contents of the document is prohibited without written permission from PT. Bhumi Jepara Service

Table A6-4
Hydraulic Mechanism Assembly Consumables

NOTE
 •Remark ※ : Parts to be replaced at each regular inspection.
 •Not Remark ※ : Replace with a new one depending on the condition.
 •"Order Q'ty" shows parts quantity for two fans.
 •(Quantity required normal maintenance.)

EQUIPMENT No.	MARKS	DESCRIPTION	PART NO	1-PIECE WEIGHT (kg)	REMARK	ORDER Q'TY	DELIVERY TIME (Month)	REPLACEMENT SCHEDULE (Year)	
(D) H Y D R A U L I C M E C H A N I S M A S S E M B L Y	a19	SCREW M6 x 12 (FOR PILOT VALVE ASS'Y)	FIG-4-a19	0.005		8			
	a20	SPRING WASHER M6 (FOR PILOT VALVE ASS'Y)	FIG-4-a20	0.001	※	8	4	every 4years or during fan overhaul	
	aa	DRAIN COVER (FOR PILOT VALVE ASS'Y)	FIG-4-aa	1.1		2			
	b1	BUSH (CLINDER SIDE)	FIG-4-b1	1.37	※	2	5	4year or abrasion	
	b2	SCREW M8 x 8 (CLINDER SIDE)	FIG-4-b2	0.003	※	4	4	during the bush replacement	
	c1	BUSH (CLINDER COVER SIDE)	FIG-4-c1	0.87	※	2	5	4year or abrasion	
	c2	SCREW M4 x 4 (CLINDER COVER SIDE)	FIG-4-c2	0.001	※	4	4	during the bush replacement	

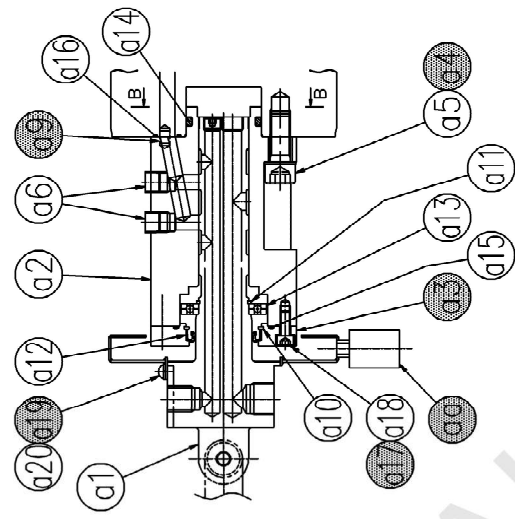
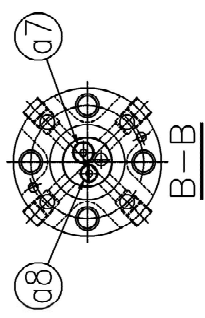
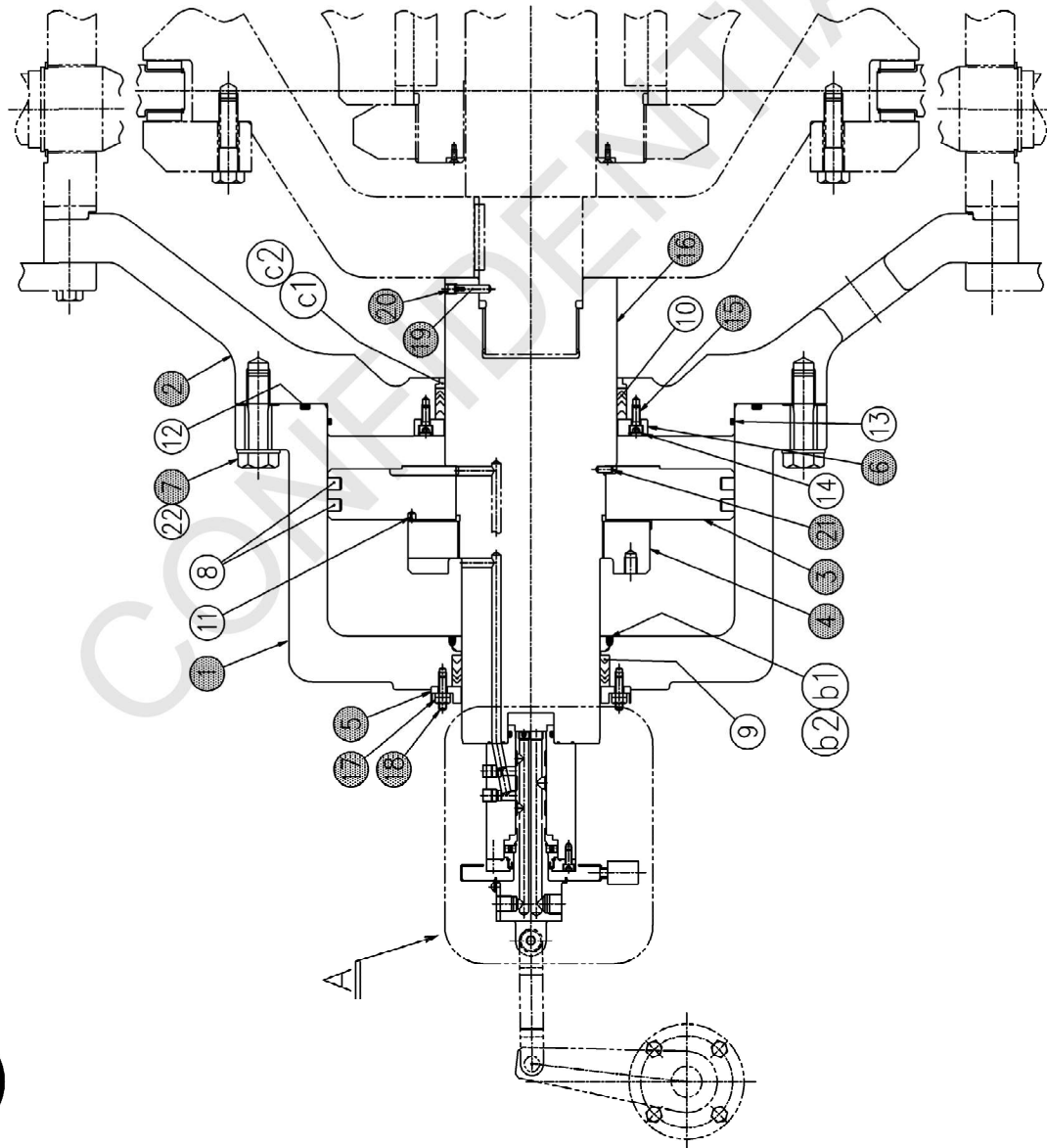
CONFIDENTIAL
 THIS DOCUMENT IS THE PROPERTY OF MITSUBISHI HITACHI POWER SYSTEMS, LTD.(MHPS) AND CONFIDENTIAL. IT MUST NEITHER BE COPIED NOR USED FOR ANY PURPOSE OR MANNER OTHER THAN EXPRESSLY PERMITTED BY MHPS OR WITH A PRIOR WRITTEN CONSENT OF MHPS NEITHER IS IT TO BE HANDED OVER NOR COMMUNICATED TO A THIRD PARTY IN ANY WAY. BREACH OR IN FRINGEMENT OF ANY KIND WILL LEAD TO LEGAL ACTION.

Uncontrolled when printed or downloaded. Verify that this is the correct version before use.
 Reproduction of part or all the contents of the document is prohibited without written permission from PT. Bhumi Jepara Service

D

CONFIDENTIAL

THIS DOCUMENT IS THE PROPERTY OF MITSUBISHI HITACHI POWER SYSTEMS, LTD. (MHPS) AND CONFIDENTIAL. IT MUST NEITHER BE COPIED NOR USED FOR ANY PURPOSE OR MANNER OTHER THAN EXPRESSLY PERMITTED BY MHPS OR WITH A PRIOR WRITTEN CONSENT OF MHPS. NEITHER IS IT TO BE HANDED OVER NOR COMMUNICATED TO A THIRD PARTY IN ANY WAY. BREACH OR INFRINGEMENT OF ANY KIND WILL LEAD TO LEGAL ACTION.



DET. A

FIG-4

**CONSUMABLE PARTS LIST
(HYDRAULIC MECHANISM ASSEMBLY)**