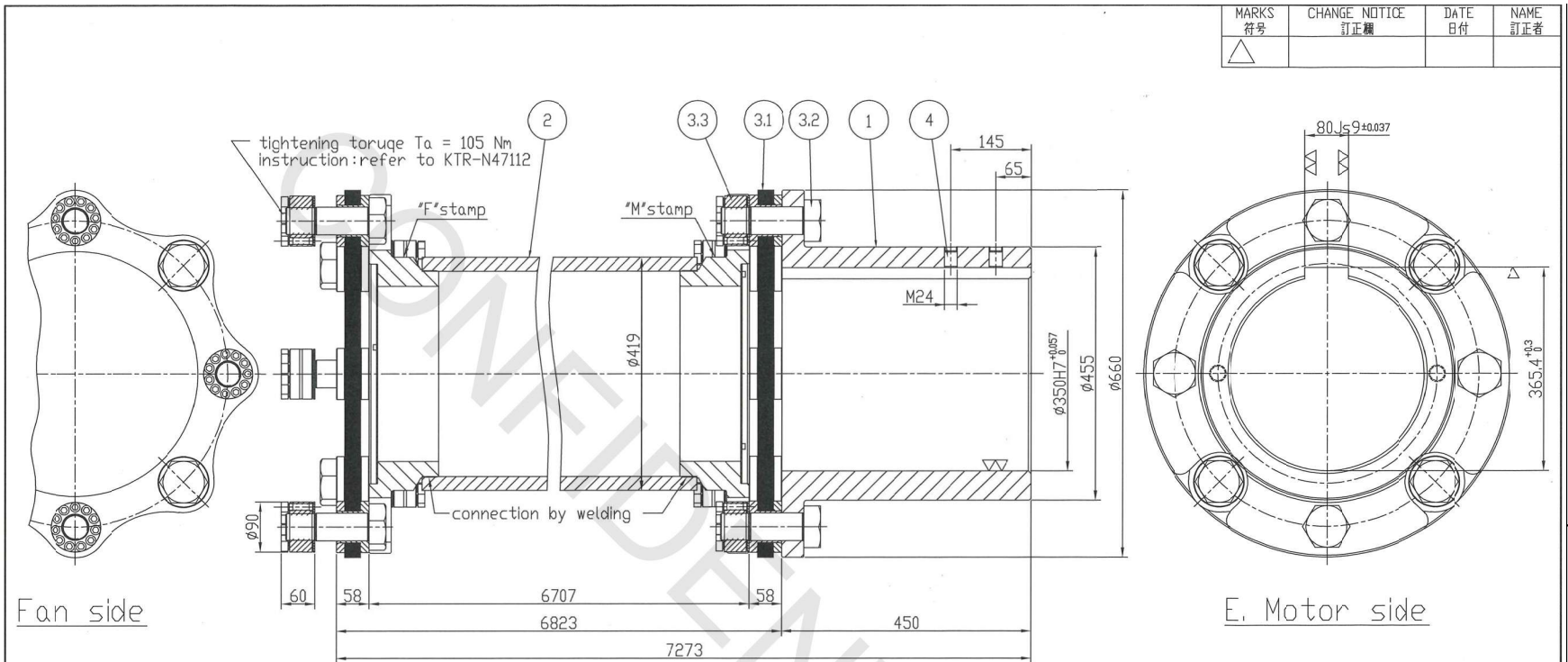


FIGURE 4.3.1.11 FLEXIBLE COUPLING FOR ID FAN



MARKS 符号	CHANGE NOTICE 訂正欄	DATE 日付	NAME 訂正者
△			

Coupling specification			
rated torque	280000 Nm		
maximum torque (10 <sup>5</sup> times)	560000 Nm		
maximum speed	1037 rpm	application	E.motor/Fan
critical speed	1452 rpm	power	11800 kW
weight	2178.6 kg	speed	740 rpm
mass moment of inertia(GD <sup>2</sup> )	96.4 kgm <sup>2</sup> (385.6 kgf·m <sup>2</sup> )	nominal torque	152284 Nm
allowable displacement (max. figures may not occur simultaneously)		operating displacement	
Anglar (each lamina)	Axial	Radial	Anglar (each lamina)
0.5 °	±5.0 mm	59.0 mm	Axial
dynamic balance (component)	G2.5		Radial
axial resonance speed	362 ~ 807 rpm		paint (w/o lamina package)
			100 μm (RAL 2001)

4	set screw	45H	2	M24	
3.3	clamping nut		16	M48x5.0	
3.2	fixing bolt	10.9	16	M48x150L	
3.1	lamina package		2		
2	welding spacer		1	seamless pipe	
1	hub	C45+N	1		
PART No. 部品番号	COMPONENT 部品名称		MATERIAL 材質	QUANTITY 数量	STANDARD 規格
DESIGNED 設計	Hashimoto	TRIGON 第三角法	TITLE 図面名称		
DRAWN 製図	Hashimoto		RADEX-N Coupling		
CHECKED 検図	Shibata	SCALE 尺度	1/7	RADEX-N 338 NANA4	
APPROVED 承認		DATE 日付	20.2.26	ASSY DRAWING 組立図	
KTR JAPAN CO.,LTD ケーティーアールジャパン株式会社			REF. DRG. No. 参照図面番号	M725579	
			DRG. No. 図面番号	KTRJ-3A・5295・1/4	