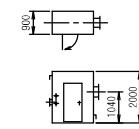


Fig. 1---POSITIONS OF DOORS, TERMINAL BOX AND FLANGE



(GPCS)		
B0HDE01GS001	A1S1	
B0HDE01GS003	A2S1	
B0HDE01GS005	A3S1	
B0HDE02GS001	B1S1	
B0HDE02GS003	B2S1	
B0HDE02GS005	B3S1	

Fig. 2---DETAILS OF PART "A"

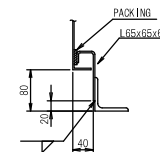


Fig. 3---DETAILS OF VENTILATOR

OPERATING FUNCTION OF LIMIT SWITCH

- DOOR L.S. (13) CONTACT CLOSERS ON DOOR OPENING
- L3-1 : N. C. CONTACT CLOSERS WITH THE D.S. SWITCH IN EARTHED POSITION
- L3-2 : N. C. CONTACT CLOSERS WITH THE D.S. SWITCH IN OPERATIVE POSITION

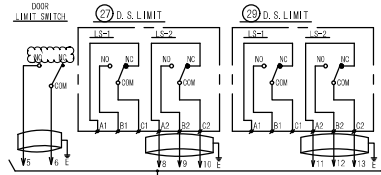


Fig. 5---INSIDE OF OPERATION BOX

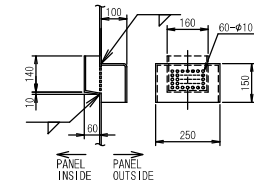
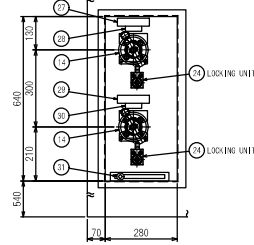
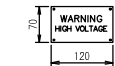


Fig. 4---FLANGE DIMENSION

Fig. 6---LETTERING OF NAME PLATE

(25) PANEL NAME PLATE	(26) APPLICATION NAME PLATE	(27) OPERATION NAME PLATE	(28) APPLICATION NAME PLATE	(29) OPERATION NAME PLATE
315x63x1 SUS SCREW	125x63x1 SUS SCREW	125x63x1 SUS SCREW	125x63x1 SUS SCREW	125x63x1 SUS SCREW
A1S1 DISCONNECTING SWITCH BOX 50HDE01GS001	OPERATION BOX	DS A1S11	EARTHED-ON	DS A1S12
A2S1 DISCONNECTING SWITCH BOX 50HDE01GS003	OPERATION BOX	DS A2S11	EARTHED-ON	DS A2S12
A3S1 DISCONNECTING SWITCH BOX 50HDE01GS005	OPERATION BOX	DS A3S11	EARTHED-ON	DS A3S12
B1S1 DISCONNECTING SWITCH BOX 50HDE02GS001	OPERATION BOX	DS B1S11	EARTHED-ON	DS B1S12
B2S1 DISCONNECTING SWITCH BOX 50HDE02GS003	OPERATION BOX	DS B2S11	EARTHED-ON	DS B2S12
B3S1 DISCONNECTING SWITCH BOX 50HDE02GS005	OPERATION BOX	DS B3S11	EARTHED-ON	DS B3S12

Fig. 7---WARNING SIGN



DESCRIPTION

- TYPE : SELF-SUPPORTING STEEL STRUCTURES.
- OUTDOOR USE AND TO BE WELD-INSTALLED ON ESP ROOF GIRDER FOR THE POSITION OF DOOR AND FLANGE. REFER TO FIG. 1.
- PAINTING : PRIME COAT : Polyurethane primer  
FINISH : Polyurethane paint
- COLOR : SURFACE OF BOX : RAL 7040  
FULL GLOSS  
INSIDE OF BOX : RAL 7040  
FULL GLOSS
- NAME PLATE : STAINLESS STEEL  
FOR SIZE AND LETTERING REFER TO FIG. 6
- QUANTITY : 6 P.C.S. (TOTAL 12 P.C.S.)
- L.V. CIRCUIT VOLTAGE : AC 220V 50Hz
- WIRING : SHIELDED WIRE BLACK 1.5sq FOR CONTROL  
LV GREEN 240sq FOR EARTHING
- THE DISTANCE BETWEEN H.V. PART AND CASING OR OTHER EARTHED PART BE KEPT AT LEAST 200MM
- PENETRATING INSULATORS, H.V. BUS AND H.V. BUS SUPPORTING INSULATORS SHALL BE INSTALLED AT SITE.

NO.	DESCRIPTION	MATERIAL	QTY	REMARKS
32	WARNING SIGN	SUS	1	
31	OPERATION HANDLE		1	
25-28	NAME PLATE	SUS	6	
24	KEY INTERLOCK SYSTEM		2	
23	KEY INTERLOCK SYSTEM		1	
22	OPERATION BOX	SPHC	1	t3.2
21	H.V. BUS WIRE	14sq	1SET	
20	BOLT, NUT, WASHER	SWH	24	M2xL60
19	H.V. BUS	1/45SP	1SET	
18	SUPPORT INSULATOR		1	
17	PENETRATING INSULATOR		2	
16	DUCT PACKING	Ø175x100x25	1	t6
15	ROLLER CHAIN	2	35P	P=9, 525
14	DISCONNECTING SWITCH OPERATIONAL MECHANISM		2	
13	DISCONNECTING SWITCH		2	KD-11A
12	DOOR SWITCH		1	OMRON 12AP2
11	GROUNDING TERMINAL	SS400	1	
10	TERMINAL		1	AC800V 25A
9	COUPLING	SQP	2	NPT1 1/4
8	TERMINAL BOX	SPHC	1	t3.2 WATER PROOF
7	WINDOW	GLASS	1	LAMINATED TYPE, BEHIND ORDERED GLASS
6	HANDLE	ZDC	1	WITH KEY
4	HINGE	SUS304	3	ø8
3	DOOR	SPHC	1	t3.2
2	VENTILATION COVER	SPHC	2	t3.2 1.65x0.55x6 1.65x0.42
1	PANEL BODY	SPHC	1	t3.2 1.65x0.55x6 1.65x0.42

RIGHT FLANGE

ORDER : 1405/1205 Project DWG. No. \_\_\_\_\_ Rev. \_\_\_\_\_

PLANT CODE : E0813750

Drawn : \_\_\_\_\_

Checked : \_\_\_\_\_

Approved : \_\_\_\_\_

Date : \_\_\_\_\_

Department : Electrical and Control Systems

Designing Section : B

Scale : 1/75, 1/10, 1/2

MPS-ES Dwg. No. 49-A2523 Rev. 5

Tanjung Jati B Expansion (Jawa-4) Units 5 & 6  
Coal fired Steam Power Plant 2 x 1000 MW

ELECTROSTATIC PRECIPITATOR UNITS  
OUTLINE DRAWING OF  
H. V. DISCONNECTING SWITCH BOX

MITSUBISHI HITACHI POWER SYSTEMS ENVIRONMENTAL SOLUTIONS, LTD.

Technology and Innovation Headquarters